

Setting Up Your WestNet ADSL

James Cox takes us briefly through the set up process — covering what to do once your ADSL is connected

Of course you **do** have your Microsoft Windows updated, antivirus software with updated virus definitions and a firewall on your computer already because you had a dial up connection to the Internet before, don't you? No? Then *get it done now!* And while you're at it, you should back up your data too. When you have done that, you are ready to proceed.

Once your account has been set up, you need to connect your modem/router to your computer and configure it. This is actually easier than connecting a dial-up modem and configuring dial up networking. Let's look at what you need to do if you are getting your modem from WestNet and want to use the USB connection.

Firstly boot up your computer and insert the Netcomm CD-ROM into a drive on your machine. Connect the power pack to the modem, plug it into a power point and switch the modem on. Then plug the squarish end of the USB cable provided into the port on the modem (the "B" end) and the thin rectangular end (the "A" end) into a spare USB port on your computer (or USB hub).

The Windows "Add New Hardware

Wizard" should appear as shown in Figure 1 and we begin the usual dance with it.

The figures illustrate what is seen on a Windows 98 system. They should be similar on later versions of Windows.

1. Click "Next".
2. Select "Search for the best driver for your device", as per Figure 2, so that you can specify the driver and click "Next" again.



Figure 2. Select "Search for the best driver for your device" so that you can specify the driver.

3. Tick the "Specify a location" check box and clear all other check boxes. Then use the Browse button to select the "Windows USB driver" folder on the CD-ROM. You will need to browse for the drive that the CD-ROM is in. It was the "W" drive on my system but will



Figure 3. Specifying the driver location.

probably be represented by a different letter on yours. Click "Next" once more.

4. The wizard will display a message that it is ready to install the driver as shown in Figure 4. Click "Next" one last time.

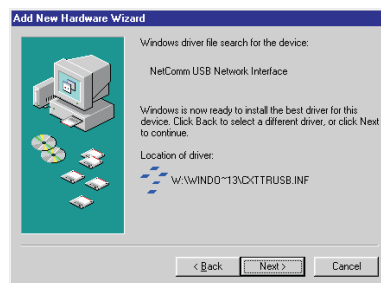


Figure 4. Windows has selected the driver.

5. The wizard will then display that the driver has been installed, as shown in Figure 5.



Figure 5. Windows lets you know the driver is installed.

6. Click "Finish".

And if your computer has an Ethernet port installed the procedure is even easier — virtually plug and go! After connecting the modem to the computer, connect one end of the supplied telephone line into the modem and the other end to the



Figure 1. The Add New Hardware Wizard.

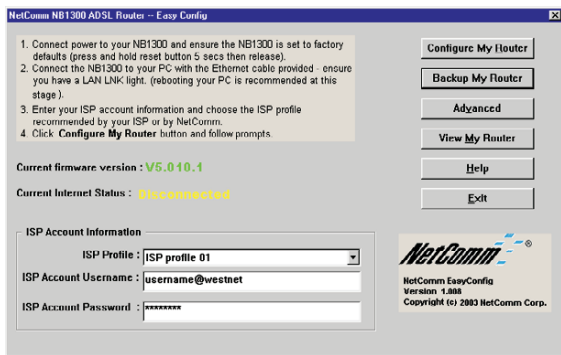


Figure 6. The Easy Config program for the modem/router.



Figure 7. Message that the configuration has been changed.

telephone wall socket. Do **not** put a line filter in this connection — that would block the ADSL signal.

During all of this the “NetComm NB1300 ADSL Router — Easy Config” window should have popped up. This is shown in Figure 6. If it doesn't you will have to find the EZCFG.EXE program on the CD-ROM and run it. Choose “ISP Profile 01” from the drop down box, enter your account username in the format shown here *username@westnet* and your account password and then click the “Configure My Router” button. You will be prompted with the message shown in Figure 7, to switch off the power to your router (ie. your combined modem and router) and then to switch it back on. After a minute or two the program should show the “Current Internet Status” as Connected and you will be online. This is outlined on pages 9-10 of the manual.

Where To Go For Support

If this doesn't work, check the sections of the manual referred to above to see that you have correctly followed all steps. If you did and you still have a problem, then it's time to try WestNet's support department by calling 1300 786 068 and they will help you.

At this stage I should make it clear that Melb PC will not be providing support to get your ADSL Internet connection working and using your WestNet e-mail and personal Web space. WestNet's support department is great and they are best placed to deal with these issues.

The Melb PC Internet Help team will of course give you support in using your Melb PC e-mail accounts, Web space and news and should be contacted through the help desk or e-mail help@melbpc.org.au. Mentioning that you have an ADSL service here will help us provide a better response to you. □