



Published by  
Melbourne PC User Group Inc.  
Suite 26, Level 1, 479 Warrigal Road  
Moorabbin, VIC 3189

**Office hours 9.30am-4.30pm (Mon-Friday)**

Phone (03) 9276 4000  
Email [office@melbpc.org.au](mailto:office@melbpc.org.au)  
ABN: 43 196 519 351  
Victorian Association Registration  
# A0003293V

PC Update Newsletter - Editor: George Skarbek  
[editorpc@melbpc.org.au](mailto:editorpc@melbpc.org.au)

Librarians: Clemens Pratt 9802 5501  
[cpratt@melbpc.org.au](mailto:cpratt@melbpc.org.au)  
Choy Lai [cplai@melbpc.org.au](mailto:cplai@melbpc.org.au)

Proof Readers:  
Tim McQueen

#### **Committee Executive**

President	George Skarbek
Vice President	John Hall
Secretary	John Swale
Treasurer	Bill Ford



Melb PC User Group Inc. is a member of the Association of  
Personal Computer User Groups

# PC Update

## November 2017

The Newsletter of Melbourne PC  
User Group Inc.

### **Monthly Meeting Live Stream**

Tune in here at 7.00pm on Wed 1st of November to  
view the Monthly Meeting live over the Internet.

Test Transmission usually commences at around 6.30pm

<http://tv.melbpc.org.au>

### **Contents**

Editorial.....	2
President's Report .....	2
Nomination for 2017 Elections .....	4
Monthly Meeting.....	5
Random Access .....	5
Library Report: Thanks But No Thanks .....	6
Model for Contemporary Leadership and Shared Values ..	6
By Steph Lancaster .....	6
What Is a "Database" Anyway? .....	6
Jim Cerny, Sarasota Technology User's Group, FL.....	6
Microsoft's Varied Word-Processing Options .....	7
By Nancy DeMarte, Sarasota Technology User Group ...	7
Educating My Phone - Graduating to a Smartphone.....	9
by Greg Skalka, Under the Computer Hood User Group	9
SIG Reports .....	11
Microcontroller SIG - Site visit .....	11
East SIG Report – October 2017 .....	12
Northern Suburbs Linux SIG – October 2017 .....	14
by Paul Addis .....	14
Special Interest Groups.....	17
November Calendar.....	26

## Editorial

I have been editor simply because there was nobody to take over this job.

PC Update is being read by considerably more members than it was some months ago. However, this is not due to my role as editor but because you can download a copy without having to log in using your ID and password.



I will continue with this job after the new committee takes over but only till the end of the year.

Since taking over I have created templates to make the production of PC Update a simple process. Some of the content comes from APCUG and as the editor all that you can (optionally) do is to write a short editorial.

Any volunteers for this job?

### Our Statement of Purpose

*The purposes of the Association are to conduct on a non-profit basis activities to help members learn and use systems and devices using various technologies, especially computing, software, and communications technology (inc. the Internet and World Wide Web, personal computers & devices), to achieve the following outcomes;*

- Advancing computer literacy;
- Advancing education and the exchange of ideas;
- Keeping members up to date on developments in computer and information technology and helping members to exchange information;
- Representing members in public debate in areas of interest including law reform proposals;
- Engaging with similar organisations; and
- Carrying out activities that benefit the Association

## President's Report

### Committee achievements

As President, I would like to state that it has been an honour to have had so many capable and hardworking members helping me, especially the executive. For many months, the executive was meeting three times a month, or more, to solve problems and find ways to help all of you.

## **Committee**

A tribute to the committee is perhaps best illustrated by the fact that most stood for re-election. The three that did not stand again had to do so for health reasons. One committee member unfortunately died during the year.

## **Treasurer**

2017 has been a most difficult and stressful year for our Treasurer, Bill Ford, and in retrospect it was perhaps too much for just one person to be in the role of Treasurer and Financial Controller for the period after the Office Manager had left in January on sick leave and later on worker's compensation leave for an indefinite period. This was without providing us with any administrator access to the software on her computer nor passwords, office keys and procedures under which she operated and refusing any direct contact with the organisation except through a third party who was not a member.

Bill Ford, spent a few months cleaning up the old accounting system. The final deficit last year 2016/7 was \$71, 806 compared with a budgeted deficit of \$98,920, i.e about \$27,000 better than budget. Significant variances included under-expenditure on Staffing Costs \$33,000, Advertising \$14,000, Heat, Light and Power \$3,700 offset by loss on the Mobile Broadband Network (after writing off some bad debts) \$38,500, over budget expenditure on Legal Costs \$4,000 and SIG Room Hire \$3,500. We have budgeted for a deficit of \$65,375 this current financial year, about \$6,500 better than last year's results. The full details will be in the Treasurer's report.

## **Secretary**

John Swale spent very many days per month, over many months in the office following the abrupt departure of the office manager who left considerable undocumented procedures, mixed Melb PC and her private emails and left very little in the way of documentation despite many prior requests.

## **Electricity costs**

Electricity costs were investigated thoroughly. The equipment in the server room was found to consume approximately 100 KWh per day. The 5KW solar panel system is to be installed on the 2<sup>nd</sup> of November the resulting saving will be about \$1,000 per annum.

## **Website Statistics**

Statistics from our website show that live streaming is becoming popular. On Wednesday 4<sup>th</sup> of October, 331 members clicked on live streaming. Unfortunately, about half left within two minutes because the streaming failed to start from some time after the meeting started. In the first week of October, 252 members went to the PC Update site and 53 visited the monthly video web page. In the first two weeks, there were 117 visits to that site. Over the last month or so there has been a dramatic increase in users visiting the members area.

## **Promoting our club**

**The Melbourne Computer Club** – A new approach to Marketing the Melbourne PC User Group to a wider audience

The Committee has registered the business name "The Melbourne Computer Club". It will be used as a trading name to expand our image in the media and search engines. We also have a YouTube channel that we are developing to promote ourselves as well by other means. We will be implementing SEO (Search Engine Optimising) on our forthcoming web site to enable new members to be found. This will help guide anyone who is searching for computer help or support in Melbourne to find us, and hopefully join us.

As a part of advertising our club 2000 leaflets were printed and distributed by a letterbox drop around the area where the EAST SIG meets. The purpose of this exercise was to let the residents around our meeting place know about MelbPC. As an incentive to attend an \$800 door prize was offered simply to attend.

As well as the letterbox drop an email was sent to all financial members who were not on the EAST SIG mailing list but lived either in the adjacent postcode or one postcode removed from the meeting place. This resulted in 15 new members attending.

Despite the cost and effort involved in printing and distributing the leaflets I still believe this has been a very worthwhile exercise. What we have learnt is that spending money on a similar promotion, which included a great door prize, is a waste of effort of the club's money, because less than 0.01% responded to that promotion. As well as the letterbox drop an email was sent to all financial members who were not on the EAST SIG mailing list but lived either in the adjacent postcode or one postcode removed from the meeting place. This resulted in 15 new members attending. This is a very significant result for zero dollars spent.

### **New Member Management software**

The main effort was the new Member Management software. The last four or possibly five committees were talking about this but we finally delivered the goods. John Hall, the current **Vice-President**, spent a vast amount of time on this project, assisted by Frank Maher, the project manager, (not on the committee) and several other members. This new system will considerably reduce the workload of the office staff and decrease the wages cost.

## **Nomination for 2017 Elections**

<b>Position</b>	<b>Nominations</b>
<b>President</b>	John Hall
<b>Vice-President</b>	Frank Maher
<b>Treasurer</b>	Stewart Gruneklee
<b>Secretary</b>	John Swale
<b>Committee (8 positions)</b>	Peter Bacon Lynn Hammett Philip Lew Harry Lewis John Morris George Skarbek David Stonier-Gibson Paul Woolard

As there was only one nomination for each of the four executive positions and eight nominations for the eight general committee places there will be no requirement for an election and at the AGM the people listed above will appointed.

# Monthly Meeting

## Wednesday 1st of November

At 7.00 pm sharp the meeting will open with our regular Q&A Session.

Then we will hear the President's Report.

At 7:30 there will be our Annual General Meeting

After the break Viktor Krstew will introduce to the B1 product with basic explanations of the theory behind the product. B.1 Hub is a home automation system. It does much more than merely turn things on and off in your home- it connects the devices in your home wirelessly and gets them talking to each other. You simply use the B.One app on your smart phone to wirelessly control your home from anywhere in the world. Then there will be a practical live demonstration with verbal explanations.

At about 9:25 George Skarbek will present a short section on What's New.

The meeting will close at 9:30 pm.

After the meeting, we get together for WAFFLE@FONG. The WAFFLE SIG ("Wine And Fine Food Lovers' Event") will be at FONG's Chinese Restaurant, 725 Centre Rd Bentleigh East, Corner of Francesco Street, Melways: 77: J-1

If you can't make it to Moorabbin, be sure to tune in to <http://tv.melbpc.org.au> for a live broadcast of the meeting. Test transmission usually begins at around 6.30pm

## Random Access

John Swale reports on Questions and Answers from the opening session of the October monthly meeting and from members' written submissions.

### Questions and Answers

**Q:** I am getting different broadband speeds on my laptop (0.15 Mbps) and my tablet (15 Mbps). They are both connected to a portable wireless modem. I have just installed the latest Windows 10. Update. Would that have affected the speed?

**A:** No it shouldn't.

**Q:** I have updated my PC to an SSD. It is running Windows 7 and is connected to BigPond by a cable. I am having intermittent problems. If the PC is on for 2 days it works but there is no internet connection. All the modem lights are on. Turning the modem off and on again makes no difference. If I turn the PC off and reboot, the connection comes back.

**A:** Instead of rebooting run the DOS commands "ipconfig /release" followed by "ipconfig /renew" and that should get you back quicker than rebooting. If the problem persists, ring Telstra support and ask them to check their logs to find out why the connection is being dropped.

**Q:** I have been using Microsoft Office 2010 for some time. I tried to use Excel the other day and it gave a message that I needed to activate it because I had a new system. I had to install a new mother board so that message makes sense. I tried to activate it but received a message that it could not do so because I had done the allowable number of activations. The Terms and Conditions stated that if a new mother board had been put in, you need to call by phone but that facility is no longer available in Australia any more. What can I do?

**A:** I'm not aware of Microsoft not answering calls. Check in the White Pages for a six digit 13 number. Be prepared as they may ask for a copy of the invoice for the new motherboard. If you have an urgent need for the data then, as a Melb PC member, you have free access to Office 365 in the cloud. Alternatively, if you need to run without internet access, download and install Open Office.

## Library Report: Thanks But No Thanks

Clemens Pratt, librarian, 03 9802 5501, [cpratt@melbpc.org.au](mailto:cpratt@melbpc.org.au)

Choy Lai, [cplai@melbpc.org.au](mailto:cplai@melbpc.org.au)

I recently had the opportunity to browse through a whole folder full of copies of Electronics Australia, a monthly magazine that I was familiar with in the '50s as Radio and Hobbies. It was a wonderful magazine with a long history, under evolving titles, from 1922 until 2000: Wireless Weekly, Radio & Hobbies, Radio Television & Hobbies, and finally Electronics Australia. I browsed through copies from 1984, a nostalgic experience for me, but those old copies were not suitable for inclusion in the library.

As librarians, we welcome donations of books for placement in the collection at Moorabbin. Over the last couple of years a number of books have been added in this way. We accept books that are reasonably modern, but do not want to take books that are obsolete and have no prospect of being borrowed on loan. As a guide, please don't offer books that were published more than ten years ago; any books older than that will need to be discarded.

*[I also had many copies of Electronics Australia, and still have several editions pertaining to the projects that I made, but I fully agree with Clements. They are not suitable for our library. Editor]*

Clemens Pratt

## Model for Contemporary Leadership and Shared Values

*By Steph Lancaster*

This document is an outlook for the Melb PC Group using a combination of contemporary leadership shared values/experience, underpinned by a strong/transparent (operational) framework which sets direction for a unified achievement involving our members. It is too long to put in its entirety in PC Update but you can read this report by clicking on: <http://www.melbpc.org.au/pc-update2/> where it will be for the next three months and then at <http://www.melbpc.org.au/members-area/committee-policies-other-documents/> where it will be for a very long time.

## What Is a “Database” Anyway?

*Jim Cerny, Sarasota Technology User's Group, FL*

A “database” is an organized collection of data (accessed on-line or through a software program on your computer) which allows many options for updating and viewing that data. If you know about “spreadsheets” then a database is similar to a spreadsheet, but more powerful. Like a word processor is to text or like a spreadsheet is to numbers, a database is to information.

You may not realize it, but you are probably already using a database every day. Your “contact list” for your email and your cell phone is a database, as is your calendar and photo organizer. Small and large businesses use a database application to keep information on their suppliers, customers, inventory, and much more. I think it is very helpful to have some idea of what a database is and how it can be used.

For our example, let's take some information that we all probably use every day – our address book or contact list. We build up the information in this list by adding new names, addresses, phone numbers, email addresses, etc. We also can view the information we have entered and have a way to update it with new or changed information. In addition, we can

SEARCH all the information for certain things and produce a short or long list of information in the database based upon our search request criteria. Let's use our "contact list" as an example. If we have a database of names and addresses, we can "search" the database by entering the first letter of a name and we may see a list generated of all names that begin with that letter. As we add more letters in the search box, the list of names is shortened based upon the letters we entered. So, if we enter a "j" we get all the names that begin with the letter "j" and if we enter "jo" we get all the names (first and last names) that begin with "jo", such as John, Johnny, Jones, Jocks, etc. Entering text in a search box is really providing a FILTER to screen your data to find what you want. With a database, you can use filters to create lists based upon what you are looking for. You will also be able to SORT the data. Here are some examples of "requests" that may be done using a database of addresses:

- List all addresses with a Vic postcode sorted by the postcode.
- List all people who have birthdays in June.
- Sort my information alphabetically by first name.

In addition to the above (which, by the way, may also be done by a spreadsheet application) a database has ways of linking or associating data. Of course, the data must have been ENTERED into the database for you to find it! A good example of grouping data, using your address list, is "tagging" or assigning some category to data elements. Suppose in your list of addresses you have garden club members, a bridge club, a church group, and other categories. You can "tag" or assign each of these categories to one or more people in your address list. Remember that one person may be assigned to more than one category. John, for example, may be in your garden club and in your bridge club. When you assign people to different "groups" in your email contact list this enables you to send a group email to everyone in that group. Pretty cool, eh? Can you imagine the huge databases used by airline companies or the military? Not only customer information but parts, inventory, sales, and so much more information can be organized and available in different ways for different people.

Of course, there are many more tools, options, and capabilities to a database application. Each may have many possibilities and some limitations, but I think this article will help you understand the basic concepts about the databases you are already using.

## Microsoft's Varied Word-Processing Options

*By Nancy DeMarte, Sarasota Technology User Group*

When we hear "word-processing," most of us think of Microsoft Word. A key application in the Office Suite, Word has the greatest number of features (sometimes more than we want) and is the most popular word-processing program in the world. But Word isn't the only word-processing program that Microsoft offers, and some of the others are free.

**WordPad** (.rtf), for example, has been included free with Windows since Windows 95. In Windows 10, it isn't in the apps list; you can only find it by typing "WordPad" in the search box on the Desktop. It is a stripped-down version of Word, but with enough features to complete most standard tasks, as shown in its command ribbon (Fig 1). Its file type, rich text format(.rtf), is readable by almost any word-processing program.





Figure 1 - WordPad Command Ribbon

**NotePad** (.txt), another long-time free feature of Windows, is even more basic. It removes all formatting from the text, leaving no colours nor fancy text effects, just a few fonts and font sizes, bold and italics. (Fig 2) It is perfect for adding text to web pages or creating and editing text files. It too must be searched for in Windows 10.

Figure 2 NotePad text options

In 2003, **OneNote**(.one) became part of the Microsoft Office suite and has been upgraded twice since. This application is available for the computer or as a mobile app for smartphones and tablets. OneNote gives you a simple way to organize your ideas or schedules. It is advertised as a note-taking app for college students and a way to organize events. It lets you create tabs for each aspect of your activity and pages inside each tab. Plus, you can import photos, maps, schedules, and web pages to keep the details handy, as I did for a trip a few years ago. (Fig 3)

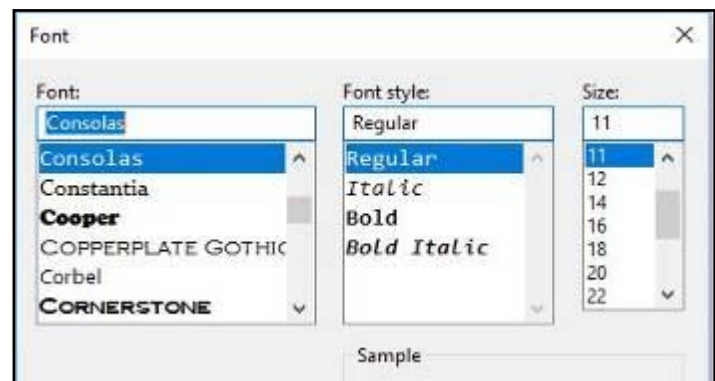
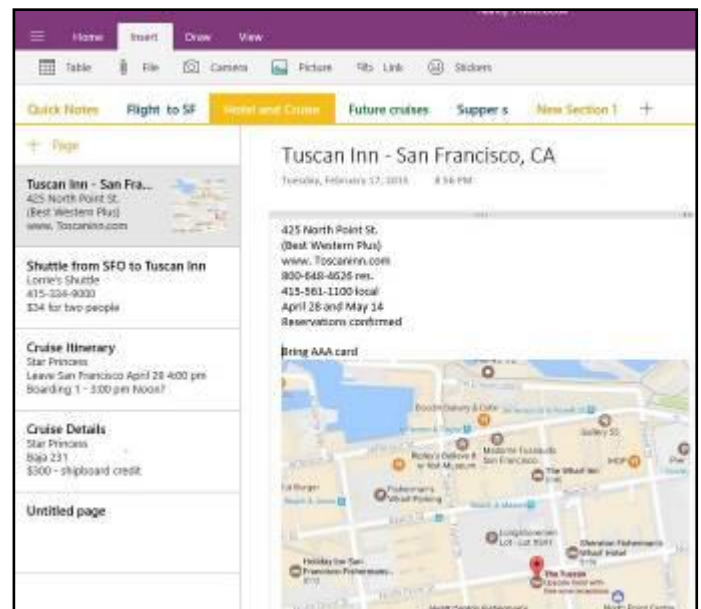
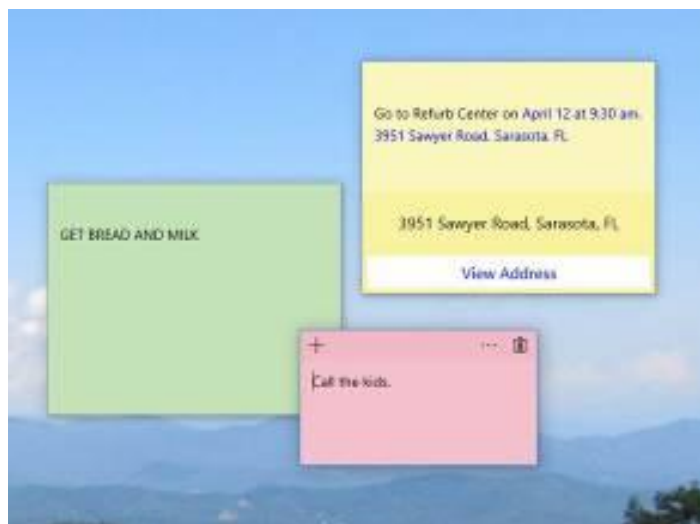


Figure 3 OneNote Workbook with tabs and the Hotel page open

If you make To Do lists, as I do, you'll love **Sticky Notes**. It has been a free feature of Windows since Windows 7. You can search for it or find it in the app list. When you click the app, it puts a yellow post-it type note on the screen. Other colours are available. If your computer has a touch screen, you can write on the Sticky Note with a stylus or your finger. If not, you can type your note. Notes can be resized or moved, as you would any digital object. To get a new Sticky Note, click the + sign. (Fig 4)

In Windows 10, if your note is an appointment reminder with a date and time, Cortana, the voice-activated assistant,



can be set to remind you verbally prior to your appointment. If you add a street address, clicking "View Address" will show a map of the location.

Minimize your notes by clicking the Sticky Notes icon on the taskbar. Click again to make them reappear in whatever screen you are viewing. To remove a note, click the trash bin icon on the top right corner of the note. If you use the Sticky Notes app often, you can make it handy by right-



clicking the app icon and choosing “Pin to Start.” Whether you are an author or a list-maker, Windows has a word-processing app for you.

*Figure 4 Sticky Notes on the Desktop*

## Educating My Phone - Graduating to a Smartphone

*by Greg Skalka, Under the Computer Hood User Group*

Though I have built many computers over the years, and used and experimented with lots of technology, for the longest time I have resisted getting the one tech item that now seems to be pervasive in our society - a smartphone. I’ve had mobile phones, but only “dumb” cell phones. I’ve had flip phones that could only place voice calls, and a slide phone that allowed talking and texting, but until recently I’d resisted getting a phone that provided access to the internet. Now at last I am “graduating” to a true smartphone.

Now I’m not opposed to technology. I am an electrical engineer by profession, and currently work for a company designing digital radio systems that may be used to connect cell phone towers to the phone network. I have used computers since before the original IBM PC-XT. I have owned and used all manner of computers, laptops, tablets, Chromebooks, music players, GPS receivers and digital cameras and video recorders. I pay for a mobile phone plan that covers three smartphones (my wife and daughter have iPhones, my son has a Google Nexus), but I’ve never graduated from my dumb phone. Until now.

There are a lot of reasons I’ve held back until now. I’m pretty value-conscious (some would say cheap) and for a long time I felt having a smartphone was not worth the cost - mainly in the cost of the phone plan. When data plans were around \$40 a month, and my home broadband internet service was about the same, it made me wonder why I had to pay twice; once to have internet access at home, and again to have it away from home. The phones themselves are what I would consider pretty pricey as well. While none of the computers that I use today (desktop or laptop) cost me more than \$500, this appears to be about the median price for smartphones. *[Ed. All prices quoted in this article are US prices]*



While the capabilities of smartphones are impressive, the cultural phenomenon of the smartphone is not (at least to me). I really would like to be able to access the internet from practically anywhere, and look with a bit of envy at those searching the web and getting real-time traffic information while out and about. To scan a product bar code in a store and then search the web for additional information, alternatives and better pricing is very powerful. I don’t feel a great need to have my emails with me wherever I go, however; I think being able to communicate via text messaging is plenty good.

For all the good that smartphones represent, I believe there definitely is a dark side. It seems almost everyone has a smartphone, and many can’t seem to put them down. Opioid drugs are very useful in pain treatment, but when abused, they can be very addictive, and ultimately destructive. I see the same things in smartphones - a great and useful tool that has the potential for great abuse. Now maybe great abuse on an individual scale is uncommon, but I worry what these devices are doing to our society. I all too often see families seated at a table in a restaurant, with each family member devoting their full attention to their own smartphones rather than each other. My wife suffers from motion sensitivity and so does the driving whenever we travel together; this gives me the opportunity to observe the drivers in the cars around us. I’ve found it is not unusual to see half of those drivers holding their phones while driving, presumably talking, texting or worse. Unlike laptop computers, smartphones have had traffic deaths attributed to their use, and laws enacted to hopefully prevent their use in situations like driving, where the distraction could be dangerous.

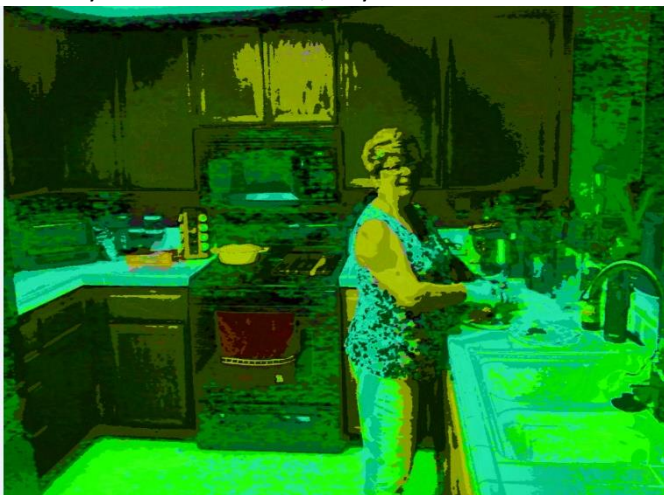
While I was concerned about the added cost, part of my reluctance to getting a smartphone was my desire to not risk becoming “one of them.” those zombie-like people that can’t put their phones down. I never want to ignore those I am with in deference to these little electronic gizmos, or risk stepping out in front of an oncoming car because I’ve tuned out everything but that little device in my hand. Stephen Hawking and Elon Musk are smart guys, and they have both expressed concerns about the potential threat to the human race that artificial intelligence could pose if its development continues. In the same way, I fear we are well on our way to trading away our humanity for these addictive little handheld screens.

So, what made me change my mind and submit to the dark side of smartphones? Is it similar to the argument that “it’s not guns that kill people, but people that kill people”? I do hope (and believe) I can ignore their siren song and not use a smartphone in an overtly antisocial manner.

In the end, several factors conspired to put a smartphone in my hand (unlike my slide phone, it is too big for my pocket). Though my slide phone served me well for many years, it has started to become unreliable. Though its built-in camera is poor by current digital camera standards, I found it very handy simply because it was almost always with me. I became dependent on its ability to photograph store product tags for items I wanted to research, and send photos of what I’m doing to my kids.

Recently, however, it had started to fail me, more often than not taking photos that look like they were taken in Andy Warhol mode (colourful and cartoonish). Finally, attempts to use the phone camera were greeted with the screen message “Camera not available.” It was not the lack of the internet; it was the lack of a camera that pushed me over the edge.

At the same time, I found that phone plans have changed, with data included in our current T-Mobile family plan for each of us, whether we were using it or not. With extra charges for data overages replaced with data throttling when your monthly limit was reached, my concerns over an increasing



bill were eliminated. I had been reluctant to change to a smartphone as I thought it would result in a bigger bill due to adding a data plan for it. As it turned out, I had been entitled to use over 2 GB of mobile data all along (and had only been using a few MB of data sending photos with my slide phone). I had the power to have a smartphone all along; all I had to do was click my heels together in the T-Mobile store (so to speak).

With my slide phone broken and data available in my phone plan, the only remaining issue to graduating to a smartphone this June was the device. Since my needs were modest, I expected the price to be modest as well. I consulted with my son, also an electrical engineer, on his choice for a smartphone, but found he had just copied a more knowledgeable friend when he bought his Google Nexus off the web. I looked on Amazon for unlocked smartphones and found promising candidates in the \$120 to \$170 price range, but concerns about being able to use these on our plan had me look at the T-Mobile web site. The best candidate seemed to be a Samsung Galaxy J3 Prime, which could be bought outright for \$150.



Heading with my wife to the T-Mobile store (the phone account is in her name), I felt kind of like a vegan heading to In 'N' Out for a Double-Double, or a diabetic heading to the candy store. Like the recipient of a mail-order bride, I was filled with both excited anticipation and apprehension. Having a smartphone would allow me to do many things I had only dreamed of, like get answers to questions myself when out, rather than have to ask my wife to look things up on her phone. I could get apps and do fun things like check on traffic and control lights at home. Having a smartphone might change me, however. I might become antisocial. I'd have to find a way to carry this larger object and avoid breaking it or losing it. Would I be satisfied with what I had or want more?

At the T-Mobile store, I could have my contacts and my few feeble photos transferred from my slide phone to my new smartphone. They took out the 16GB micro SD card from my old phone and put it in my new phone, but I immediately began plotting to get a much larger SD card for the smartphone. I looked at cases for my new phone at the T-Mobile store but they all seemed expensive. I could get a nice case with belt clip (my initial experiment with carrying the phone) for a lot less. I didn't take the phone out much until I'd gotten the case, as I was concerned about damaging it. This caution proved to be justified, as I've already dropped the smartphone in a parking lot once (but the case protected it).

Now I've moved into the 21st century, joining the over 3 billion humans that use smartphones. The phones may be smart - let's hope all the users remain so.

## SIG Reports

### Microcontroller SIG - Site visit

By David Stonier-Gibson



For our October 11 meeting of the Microcontroller SIG we did something a little different. We had a site visit to the [Monash Centre for Additive Manufacturing](#) (MCAM). Basically, MCAM is a place with some giant 3D printers, not the hobby type that prints toys and ornaments in plastic, but huge, multi-million dollar machines that print in aluminium, stainless steel and titanium.

MCAM is part of Monash university, and owns the largest 3D metal printer in the world. The centre is both a research establishment, and through an spin-off company, AMAERO a commercial enterprise.

The event was very popular, with about 30 people turning up including 5 newbies, an attestation to the power of [MeetUp](#) to get new faces. Ages ranged from 8 to 80+. Some of us met for dinner beforehand at the local pub, with 16 taking part in that.

## East SIG Report – October 2017

By Neil Muller

The October meeting opened with **Paul Woolard** welcoming members followed by Q&A conducted by **George Skarbek**.

Q: I use a portable hard drive connected to my computer to store videos files. As it's spinning away not doing anything most of the time, I'm wondering whether I should replace it. I've looked at 1 TB drives and the price varies from \$69 to \$149. How do I determine the reliability of these hard drives?

A: Probably the best way to determine the longevity is to look at the warranty. These will usually vary from 1 to 3 years. The "mean time between failures" figure for drive is based on 24 hour a day 365 day usage and should not be of concern to you. If you only use the drive occasionally, plug it in only when you want it. When you do purchase a portable drive, make sure its USB3.

Q: What are the advantages of using the Pro version of Windows 10 compared to the standard version? I believe with the Pro version you can determine the size of the updates and what updates you wish to install?

A: The difference between the versions is several hundred dollars. (Audience laughs) If you work in a corporate environment you can connect to a domain server with the Windows 10 Pro version. This means that if you're working from a remote office your desktop and everything will come back because you're part of the domain. The Pro version also has slightly better compression and decryption. The time the upgrades take to download will depend on your internet download speed. The amount of data to download will be greater for the Pro version because it has more features.

The city of Munich in Germany spent nine years and millions of euros moving to Linux and other open-source software and has recently announced it's planning to switch back to Windows 10.

Q: Why is Munich going back to Windows and MS Office?

A: There's a variety of reasons. The original thought was that they were going to save money because Windows and Office cost money, even though they were getting it at a cheaper rate. The first problem was support. All the IT staff had a good knowledge of Windows but didn't really know Linux. Their servers had to change, not enough staff knew Linux and there was not enough support. They hired staff who claimed they knew Linux but most had a basic understanding but often didn't know how to proficiently use the command line. The latest versions of MS Word have very good encryption and staff often couldn't communicate with others as Open Office couldn't read those files. Some of the programs they were using would only run on Windows, as there was no Linux equivalent. The cost of deploying Linux ended up costing many millions of euros to save the cost of around \$50 for the Windows licence.

Q: I've started to get many spam emails coming from my own Hotmail address. I can't block myself so is there any way around that? I've changed the password to my Hotmail account and it's made no difference.

A: Changing the password will make no difference as it's the email address that's been hacked.

Q: My modem keeps sending me emails that I've just experienced another attack. About 6 months ago I turned on a setting to send me emails anytime there's been an attack on my IP address. These reports vary from 20 to over a hundred a day.

A: I wouldn't worry about it, turn off the messages and you won't know a thing about it. These days the silicon firewalls in routers are pretty good at stopping these attacks. The cause of the email alerts is people port scanning to see if anyone has left the front door open.

Q: Recently I visited China and as China doesn't accept Gmail I installed a VPN. When I tried to connect, Google sent a message that someone is attacking my computer and then blocks my access. What can I do?

A: I suggest you leave your computer on at home while you are away and use the VPN to access mail from home. Turn the monitor off as it's not needed.

First up after Q&A was **Trevor Hudson** who played two short videos he'd prepared on "How to find your Office 2013 Product ID" and "Ten reasons for switching to Android". Both videos are available on YouTube, Vimeo and the Melbourne Computer Club websites by searching the above titles.

Next up was John Hall (our President elect) who spoke on the new Membership Management System. John urged CiviCRM Yammer users to try the test site and report any issues they may find. Current testing showed up problems with Family Memberships and these issues are now being addressed by the contractor.

To access the Membership Management System click on the **Members Area** tab on the MelbPC website (on the top drop down menu) and then select **Members Area-login**. The next step is to enter your Melbourne PC ID. A key point to note is that members IDs are their Melbourne PC email address. i.e. [xxxx@melbpc.org.au](mailto:xxxx@melbpc.org.au). John stressed this is only for identification purposes and users can continue to use their preferred email address such as Gmail for emails. The final step is to go to the dashboard to update your profile, select SIGs you would like to receive reminders for and to pay membership subscriptions etc. John noted that credit card details are not kept in house but payment is through Paypal, Bpay or your credit card providers. The system is very close to being rolled out and John expects that to happen within the next month.

After a short break **Phil Mustoe** National Sales Manager for Cartridge World spoke about the company and its products. Cartridge World started in Adelaide in 1988 and is 100% franchise owned. It is now a worldwide company with over 1,400 stores. After a venture capital purchase of the company some years ago it is now Hong Kong owned and growing again.

Phil noted that there are 3 categories of cartridges, OEMs, Cartridge World and Compatibles. Cartridge World manufactures cartridges for most printer manufacturers but sells theirs at a much cheaper rate. Cartridge World can do this because it doesn't need to recoup the cost of printers which the manufactures usually sell at cost price.

In its laser cartridges, Cartridge World uses polymerized (circular) toner rather than inferior pulverised toner found in most compatible cartridges. Phil recommended the use of good quality paper stating it is false economy to use cheap paper in a laser printer, as these are more wearing on the print drum.

Cartridge World will refill your original cartridges but most people prefer to swap theirs for an identical refilled cartridge. If you want your cartridge refilled, the cartridge will need to be dropped off and picked up later. Most Cartridge World stores offer this service. Inks used are the same as the OEM inks according to Phil. Cartridge World guarantees that if its cartridges damage your printer, the printer will be repaired or replaced.

Phil detailed many business solutions Cartridge World now offers businesses. Services offered include the initial purchase and ongoing maintenance of office printers to the supply of all printing consumable items or both. These include genuine, compatible and refilled inkjet and laser cartridges and supply of paper. Computer systems are in place that monitors printer life and cartridge and paper usage. These systems ensure a continual supply of printer consumables and working printers, freeing up a business's staff from the task of printer maintenance.

# Northern Suburbs Linux SIG – October 2017

*by Paul Addis*

The evening meeting opened with an informal discussion of Mobile phones available via the grey market and their suitability for use in Australia. The discussion partly related to the frequency bands supported by the phone, and broadened out to include other factors such as supported protocols.

The less technical among us struggled to find a way through the blizzard of terminology and acronyms. But the discussion was terminated by the start of the more formal sessions, starting with Linux News provided by Nick Vespo. Oddly, the news was all about Android, which has a loose association with Linux proper via the use of the Linux kernel.

One item related to open source software on Android. The “official” Android repository, Google Play, has a huge number of applications, and only a small proportion of these can properly be described as open source. This is true of applications for the latest Android release, Oreo (Android V8).

An incidental comment was that the Windows phone is “dead”. There will be no new releases of the Windows phone software, and even Bill Gates has chosen to use Android for his mobile phone(s).

Android Oreo has a number of enhancements that improve usability, including the ability to swipe in an upward direction from anywhere on the screen to show the apps. The installed apps can be organised via sub-menus, for example all office-related apps can be accessed via a single sub-menu.

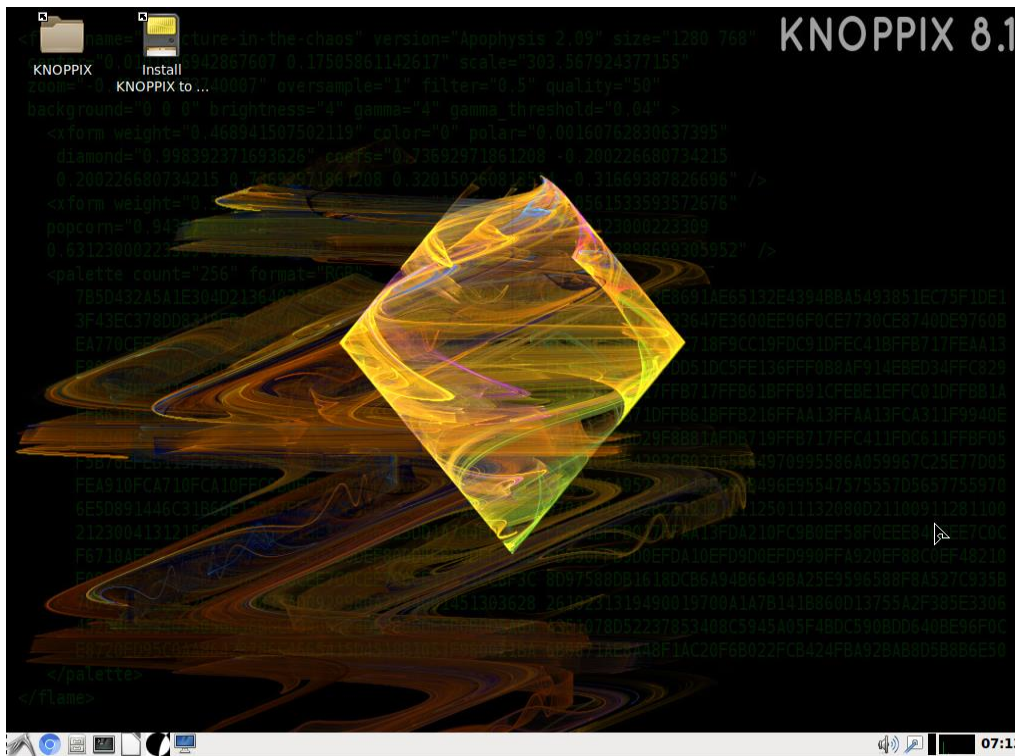
Picture-in-picture allows a background program to operate and display its results while the user works with a completely different program in the foreground. So that – for instance – a video can play in the background while file editing happens in the foreground, and the video will be shown in a small sub-window.

Android Studio is available for Linux (and Windows) so that applications can be developed and tested before being ported to the Android platform. The Linux system must have Java installed for the Studio to operate.

There are open source programs/apps available for Android Oreo and a list of these can be found on Wikipedia. But there are many that are completely or partly closed source, and this was a source of concern for the meeting attendees.

Discussion of Android future and concerns about security and privacy flowed into the Open Forum session. A warning was issued about using app repositories other than Google Play. These “other” repositories may not have standards for security, and/or may not check the available apps for quality. Google is tightening its control over apps available from Google Play to improve security and quality; others are probably not doing anything similar.





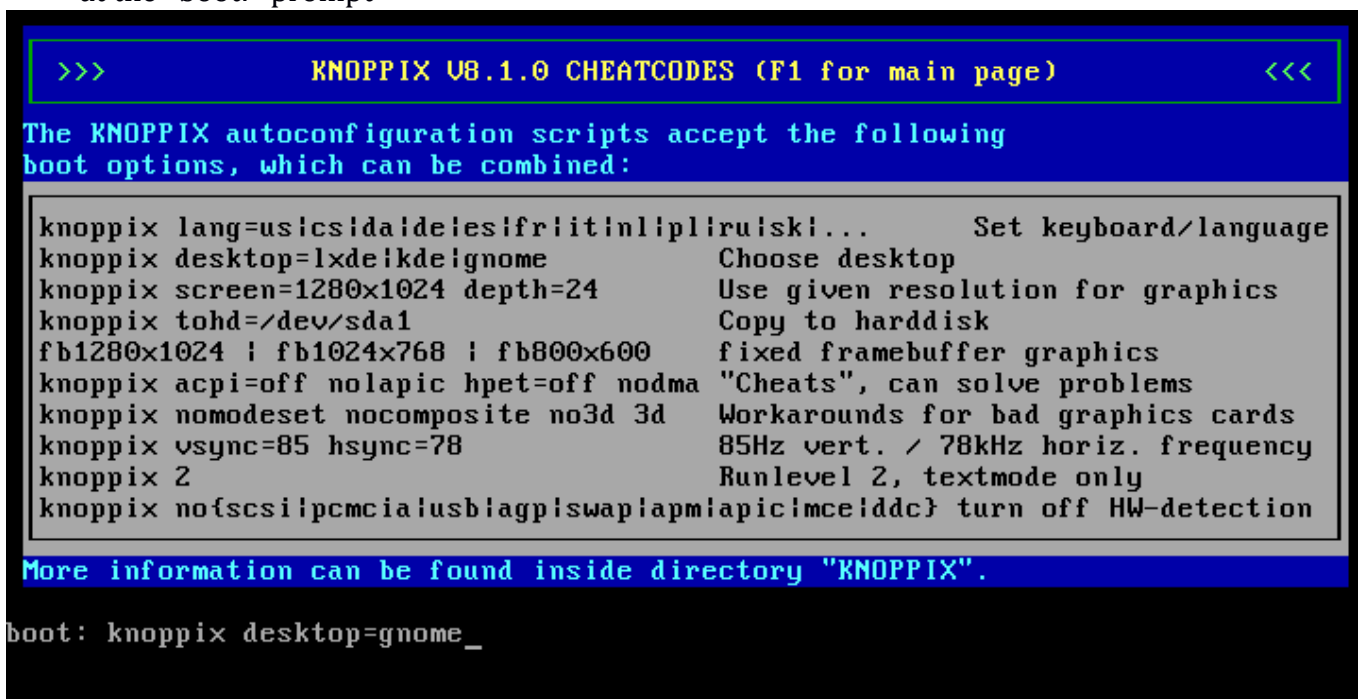
After the social break, David Hatton presented the evening's main session: Knoppix 8.1. For many of us, Knoppix was the first Linux system that we encountered. It has been around for a number of years as a live CD or – more recently – as a live DVD.

The CD version is over 600MB in size, and the DVD version (with many more applications) is close to the size of a full DVD (4.6GB). It is distributed as a .iso file. Booting from the optical material can be rather slow, so there is an option to store the .iso on hard disk. The initial start is via CD or DVD, and then the system switches to accessing the files on the hard disk, resulting in a substantial improvement in responsiveness.

*The default Knoppix LXDE desktop*

The standard desktop environment is LXDE, but many of the applications are from KDE. To try out a different desktop, you will need to reboot and choose the appropriate desktop option by typing (for example)

Knoppix desktop=gnome  
at the boot: prompt



*Using the desktop "cheat code" to boot the Knoppix gnome desktop*

There is an emphasis on accessibility for the visually-impaired, at least in part because originator's (Klaus Knopper) wife (Adriane) is visually impaired. There is even a special version of Knoppix named after her.

Programs shown included a utility program to compare text files to identify differences (Kompare), Homebank – a useful finance program, and a simple eBook reader which can “speak” the text.

While a user can set up a separate modifiable area for data when installing Knoppix on a hard drive or a USB disk, the system cannot be easily updated. If you want to install on a USB disk or a hard disk, you are strongly urged to read the relevant sections of the Knoppix Wiki at

<http://knoppix.net/wiki3>

The session gave us a chance to review the latest iteration of a system that has been around for more than fifteen years, and is still as useful and relevant as ever.

# Special Interest Groups

## SIG Meetings & Contact Details

### Special Interest Groups

Data Source: data-source for SIG-List

Updated: 21-Oct-2017 - 23:42

**Amendments:** Please advise changes/corrections to:  
[calendar-admin@melbpc.org.au/](mailto:calendar-admin@melbpc.org.au)

**Recent changes are at:**

<http://www.melbpc.org.au/interest-groups-resources/sig-changes/>

### Access (database) and Excel

<b>Date Jan</b>	<b>No Meeting</b>
<b>Feb-Nov</b>	<b>Second Mon of month (inc. Public Holidays)</b>
<b>Dec</b>	<b>Second Mon of month</b>
<b>Time</b>	6:30pm - 8:30pm
<b>Email</b>	<a href="mailto:access@melbpc.org.au">access@melbpc.org.au</a>
<b>Location</b>	Melb PC HQ, Level 1, 479 Warrigal Rd, <b>Moorabbin</b> Melway:78.D8
<b>Convenor(s)</b>	Craig Evans <a href="mailto:craig_evans@racv.com.au">craig_evans@racv.com.au</a>

### Bayside

<b>Date Jan</b>	<b>Third Thu of month</b>
<b>Feb-Nov</b>	<b>Third Thu of month</b>
<b>Dec</b>	<b>Third Thu of month</b>
<b>Time</b>	10am - 12noon
<b>Email</b>	<a href="mailto:bayside@melbpc.org.au">bayside@melbpc.org.au</a>
<b>Location</b>	St Stephens Church Hall, 111 North Road (cnr Cochrane St), <b>Brighton</b> Melway:67.F7
<b>Convenor(s)</b>	Peter Carpenter - 9596 3441 Brian Fergie Les Johnston

### Beginners East (BEAST)

<b>Date Jan</b>	<b>No Meeting</b>
<b>Feb-Nov</b>	<b>Third Sun of month</b>
<b>Dec</b>	<b>Second Sun of month</b>
<b>Time</b>	10am - 12:30pm
<b>Email</b>	<a href="mailto:beast@melbpc.org.au">beast@melbpc.org.au</a>
<b>Location</b>	Vermont South Community Centre, 1 Karobran Drive, <b>Vermont South</b> Melway:62.G7
<b>Convenor(s)</b>	Dave Botherway

### Casey

<b>Date Jan</b>	<b>No Meeting</b>
<b>Feb-Nov</b>	<b>Second Fri of month</b>
<b>Dec</b>	<b>Second Fri of month. (Christmas function - check location/time etc with Convener)</b>
<b>Time</b>	1pm - 3:30pm
<b>Location</b>	Beaconsfield Neighbourhood Centre, 8 O'Neil Road, <b>Beaconsfield</b> Melway:214.A1
<b>Convenor(s)</b>	Jan Whitaker - 9705 9009 <a href="mailto:jwhit@janwhitaker.com">jwhit@janwhitaker.com</a> Jan Weiner - 9796 2807 <a href="mailto:wei@westnet.com.au">wei@westnet.com.au</a>

### Casey Workshop

<b>Date Jan</b>	<b>No Meeting</b>
<b>Feb-Nov</b>	<b>Fourth Fri of month</b>
<b>Dec</b>	<b>No Meeting</b>
<b>Time</b>	1pm - 3:30pm
<b>Location</b>	Beaconsfield Neighbourhood Centre, 8 O'Neil Road, <b>Beaconsfield</b> Melway:214.A1
<b>Convenor(s)</b>	Jan Weiner - 9796 2807 <a href="mailto:wei@westnet.com.au">wei@westnet.com.au</a> Jan Whitaker - 9705 9009 <a href="mailto:jwhit@janwhitaker.com">jwhit@janwhitaker.com</a>

### Communications

<b>Date Jan</b>	<b>No Meeting</b>
<b>Feb-Nov</b>	<b>Second Wed of month</b>
<b>Dec</b>	<b>Second Wed of month</b>
<b>Time</b>	7 - 9:30pm
<b>Email</b>	<a href="mailto:phil@melbpc.org.au">phil@melbpc.org.au</a>
<b>Location</b>	Melb PC HQ, Level 1, 479 Warrigal Rd, <b>Moorabbin</b> Melway:78.D8
<b>Convenor(s)</b>	Phil Lew - 0418 567 019

### Digital Images

<b>Date Jan</b>	<b>Third Fri of month</b>
<b>Feb-Nov</b>	<b>Third Fri of month</b>
<b>Dec</b>	<b>No Meeting</b>
<b>Time</b>	10am - 12noon
<b>Location</b>	Wadham House, 52 Wadham Parade, <b>Mount Waverley</b> Melway:61.E12
<b>Convenor(s)</b>	Ian Bock - 9807 3701 <a href="mailto:bockey@melbpc.org.au">bockey@melbpc.org.au</a>

## East

<b>Date Jan</b>	<b>No Meeting</b>
<b>Feb-Dec</b>	<b>Second Thu of month</b>
<b>Time</b>	7:30pm - 9:30pm
<b>Email</b>	<a href="mailto:east@melbpc.org.au">east@melbpc.org.au</a>
<b>Location</b>	Eley Park Community Centre, 87 Eley Rd, <b>Blackburn South</b> Melway:61.H5
<b>Convenor(s)</b>	Paul Woolard - 9877 1059 Ian Dewhurst - 0438 480 500

## East Workshop & 3D Printing

<b>Date Jan</b>	<b>No Meeting</b>
<b>Feb-Nov</b>	<b>Second Sun of month. NO meeting in May - Mother's Day.</b>
<b>Dec</b>	<b>Second Sun of month</b>
<b>Time</b>	10am - 2pm
<b>Email</b>	<a href="mailto:eastwsh@melbpc.org.au">eastwsh@melbpc.org.au</a>
<b>Location</b>	Wadham House, 52 Wadham Parade, <b>Mount Waverley</b> Melway:61.E12
<b>Convenor(s)</b>	Paul Woolard - 0417 566 209 <a href="mailto:pwoolard@melbpc.org.au">pwoolard@melbpc.org.au</a> John Swale (3D printing) - 0417 530 766

## Essendon - Main meeting

<b>Date Jan</b>	<b>No Meeting</b>
<b>Feb-Nov</b>	<b>First Fri of month</b>
<b>Dec</b>	<b>No Meeting</b>
<b>Time</b>	9:30am - 12noon
<b>Email</b>	<a href="mailto:essendon@melbpc.org.au">essendon@melbpc.org.au</a>
<b>Location</b>	Nancye Kirchner Neighbourhood Centre, Doyle Street (corner Somerset St), <b>Avondale Heights</b> Melway:27.D6
<b>Convenor(s)</b>	John Guegan - 9317 7114

## Essendon - Open Forum

<b>Date Jan</b>	<b>No Meeting</b>
<b>Feb-Nov</b>	<b>Second Fri of month</b>
<b>Dec</b>	<b>Second Fri of month. (Christmas Function, 10:30am)</b>
<b>Time</b>	9:30am - 12noon
<b>Email</b>	<a href="mailto:essendon@melbpc.org.au">essendon@melbpc.org.au</a>
<b>Location</b>	Nancye Kirchner Neighbourhood Centre, Doyle Street (corner Somerset St), <b>Avondale Heights</b> Melway:27.D6
<b>Convenor(s)</b>	John Guegan - 9317 7114

## Essendon - Various topics

<b>Date Jan</b>	<b>No Meeting</b>
<b>Feb-Nov</b>	<b>Third Fri of month</b>
<b>Dec</b>	<b>No Meeting</b>
<b>Time</b>	9:30am - 12noon
<b>Email</b>	<a href="mailto:essendon@melbpc.org.au">essendon@melbpc.org.au</a>
<b>Location</b>	Nancye Kirchner Neighbourhood Centre, Doyle Street (corner Somerset St), <b>Avondale Heights</b> Melway:27.D6
<b>Convenor(s)</b>	John Guegan - 9317 7114

## Everything Apple

<b>Date Jan</b>	<b>No Meeting</b>
<b>Feb-Nov</b>	<b>Fourth Sun of month</b>
<b>Dec</b>	<b>No Meeting</b>
<b>Time</b>	2pm - 4pm
<b>Email</b>	<a href="mailto:everything-apple@ausom.net.au">everything-apple@ausom.net.au</a>
<b>Location</b>	Melb PC HQ, Level 1, 479 Warrigal Rd, <b>Moorabbin</b> Melway:78.D8
<b>Convenor(s)</b>	Julie Ackland Peter Emery

## Genealogy East

<b>Date Jan</b>	<b>No Meeting</b>
<b>Feb-Nov</b>	<b>Third Sun of month</b>
<b>Dec</b>	<b>Second Sun of month</b>
<b>Time</b>	1pm - 3:30pm
<b>Email</b>	<a href="mailto:geneast@melbpc.org.au">geneast@melbpc.org.au</a>
<b>Location</b>	Vermont South Community Centre, 1 Karobran Drive, <b>Vermont South</b> Melway:62.G7
<b>Convenor(s)</b>	Denis Street

## Hardware

<b>Date Jan</b>	<b>No Meeting</b>
<b>Feb-Dec</b>	<b>Second Fri of month</b>
<b>Time</b>	10am - 12noon
<b>Location</b>	Wadham House, 52 Wadham Parade, <b>Mount Waverley</b> Melway:61.E12
<b>Convenor(s)</b>	Kelvin Cording - 9438 1047 <a href="mailto:kcording@bigpond.net.au">kcording@bigpond.net.au</a>

## iHelp

<b>Date Jan</b>	<b>Approximately 6 monthly</b>
<b>Feb-Dec</b>	<b>Approximately 6 monthly</b>
<b>Time</b>	7pm - 9pm
<b>Email</b>	<a href="mailto:ihelp@melbpc.org.au">ihelp@melbpc.org.au</a>
<b>Location</b>	Melb PC HQ, Level 1, 479 Warrigal Rd, <b>Moorabbin</b> Melway:78.D8
<b>Convenor(s)</b>	Dave Simpson

## Investment Tools - WASINT

**Date Jan** No Meeting  
**Feb-Nov** Second Tue of month  
**Dec** Second Tue of month  
**Time** 10:30am - 12:30pm  
**Email** [wasint@melbpc.org.au](mailto:wasint@melbpc.org.au)  
**Location** Melb PC HQ, Level 1, 479 Warrigal Rd,  
**Moorabbin** Melway:78.D8  
**Convenor(s)** Richard Solly

## Linux Workshop - Moorabbin

**Date Jan** No Meeting  
**Feb-Nov** Second Sat of month  
**Dec** Second Sat of month  
**Time** 10:30am - 1:30pm  
**Email** [linuxworkshop@melbpc.org.au](mailto:linuxworkshop@melbpc.org.au)  
**Location** Melb PC HQ, Level 1, 479 Warrigal Rd,  
**Moorabbin** Melway:78.D8  
**Convenor(s)** David Hatton

## MACE (Atari Computers)

**Date Jan** Third Sun - BBQ - check with  
Convenor for location  
**Feb-Nov** Third Sun of month  
**Dec** Third Sun of month  
**Time** 10am - 2pm  
**Email** [maceatari@gmail.com](mailto:maceatari@gmail.com)  
**Location** Melb PC HQ, Level 1, 479 Warrigal Rd,  
**Moorabbin** Melway:78.D8  
**Convenor(s)** Andrew Boschan  
[andrewbosch@gmail.com](mailto:andrewbosch@gmail.com)

## Microcontroller

**Date Jan** Second Wed of month  
**Feb-Nov** Second Wed of month  
**Dec** Second Wed of month  
**Time** 7pm - 9:30pm  
**Email** [microcontroller@melbpc.org.au](mailto:microcontroller@melbpc.org.au)  
**Location** Melb PC HQ, Level 1, 479 Warrigal Rd,  
**Moorabbin** Melway:78.D8  
**Convenor(s)** Phil Lew - 0418 567 019  
[phil@melbpc.org.au](mailto:phil@melbpc.org.au)  
John Hollow - 0417 031 164

## Microcontroller Workshop

**Date Jan** Second & Fourth Sat of Jan.  
**Feb-Nov** Second & Fourth Sat of month.  
**Dec** Second Sat (only) of Dec.  
**Time** 12noon - 5pm  
**Email** [microcontroller-workshop@](mailto:microcontroller-workshop@)

[melbpc.org.au](http://melbpc.org.au)  
**Location** Melb PC HQ, Level 1, 479 Warrigal Rd,  
**Moorabbin** Melway:78.D8  
**Convenor(s)** John Shirt - 0409 568 267  
Rob Brown - 0419 285 806

## Mornington Peninsula - General, Q&A

**Date Jan** Third Mon of month  
**Feb-Nov** Third Mon of month  
**Dec** No Meeting  
**Time** 9:30am - 12noon  
**Email** [peninsula@melbpc.org.au](mailto:peninsula@melbpc.org.au)  
**Location** Mornington Community Information and  
Support Centre, 320 Main St,  
**Mornington** Melway:104.E12  
**Convenor(s)** Terry Said - 0427 750 327  
[dulnain@gmail.com](mailto:dulnain@gmail.com)  
Ian Thomson  
[iaroth@netspace.net.au](mailto:iaroth@netspace.net.au)  
Colin Ackehurst

## Mornington Peninsula - Family History

**Date Jan** Third Mon of month  
**Feb-Nov** Third Mon of month  
**Dec** No Meeting  
**Time** 1:30pm - 4:30pm  
**Email** [peninsula@melbpc.org.au](mailto:peninsula@melbpc.org.au)  
**Location** Mornington Community Information and  
Support Centre, 320 Main St,  
**Mornington** Melway:104.E12  
**Convenor(s)** Colin Ackehurst  
[colin\\_a\\_ackehurst@bigpond.com](mailto:colin_a_ackehurst@bigpond.com)

## Mornington Pen. Family History: Adv.DNA

**Date Jan** last Wed of month (5th Wed if there  
is one, otherwise 4th Wed)  
**Feb-Nov** last Wed of month (5th Wed if there  
is one, otherwise 4th Wed)  
**Dec** No Meeting  
**Time** 2pm - 4pm  
**Email** [peninsula@melbpc.org.au](mailto:peninsula@melbpc.org.au)  
**Location** Mornington Community Information and  
Support Centre, 320 Main St,  
**Mornington** Melway:104.E12  
**Convenor(s)** Colin Ackehurst  
[colin\\_a\\_ackehurst@bigpond.com](mailto:colin_a_ackehurst@bigpond.com)

## Multimedia Home Entertainment

Date Jan	No Meeting
Feb-Nov	First Fri of month
Dec	First Fri of month
Time	10am - 12noon
Email	<a href="mailto:MHE@melbpc.org.au">MHE@melbpc.org.au</a>
Location	Wadham House, 52 Wadham Parade, <b>Mount Waverley</b> Melway:61.E12
Convenor(s)	John Hall - 9803 2731 <a href="mailto:johnhall@melbpc.org.au">johnhall@melbpc.org.au</a> Kelvin Cording - 9438 1047 <a href="mailto:kcording@bigpond.net.au">kcording@bigpond.net.au</a>

## Music

Date Jan	Third Thu of month
Feb-Nov	Third Thu of month
Dec	No Meeting
Time	7:30pm - 9:30pm
Email	<a href="mailto:music@melbpc.org.au">music@melbpc.org.au</a>
Location	Melb PC HQ, Level 1, 479 Warrigal Rd, <b>Moorabbin</b> Melway:78.D8
Convenor(s)	Bill Sakell John Shirt - 0409 568 267

## North East Android

Date Jan	No Meeting
Feb-Nov	Third Wed of month
Dec	Second Wed of Dec - join with North East Daytime SIG - end-of-year breakup
Time	10am - 12noon
Email	<a href="mailto:ne-android@melbpc.org.au">ne-android@melbpc.org.au</a>
Location	Hawdon Street Community Hall, 80 Hawdon Street, <b>Heidelberg</b> Melway:32.A4
Convenor(s)	Colin Lampshire 9857 5372 or 0413 640 408 <a href="mailto:lampshir@melbpc.org.au">lampshir@melbpc.org.au</a> Kelvin Cording - 9438 1047

## North East Daytime and Photography

Date Jan	No Meeting
Feb-Dec	Second Wed of month
Time	10am - 12noon
Email	<a href="mailto:neday@melbpc.org.au">neday@melbpc.org.au</a>
Location	Hawdon Street Community Hall, 80 Hawdon Street, <b>Heidelberg</b> Melway:32.A4
Convenor(s)	Colin Lampshire 9857 5372 or 0413 640 408 <a href="mailto:lampshir@melbpc.org.au">lampshir@melbpc.org.au</a>

## North East Genealogy

Date Jan	No Meeting
Feb-Nov	First Wed of month
Dec	First Wed of month
Time	10am - 12noon
Email	<a href="mailto:negen@melbpc.org.au">negen@melbpc.org.au</a>
Location	Hawdon Street Community Hall, 80 Hawdon Street, <b>Heidelberg</b> Melway:32.A4
Convenor(s)	Lynn. Hammet <a href="mailto:lynnhammet@gmail.com">lynnhammet@gmail.com</a>

## Northern Suburbs Linux

Date Jan	Third Mon of month
Feb-Nov	Third Mon of month
Dec	No Meeting
Time	7:30pm - 9:30pm
Email	<a href="mailto:nslig@melbpc.org.au">nslig@melbpc.org.au</a>
Location	Community Meeting Room, Watsonia Library, 4 Ibbotson St, <b>Watsonia</b> Melway:20.E4
Convenor(s)	David Hatton Stephen Davidson

## Online

Date Jan	Available online at any time
Feb-Nov	Available online at any time
Dec	Available online at any time
Time	Available online at any time
Email	<a href="mailto:kazkev@melbpc.org.au">kazkev@melbpc.org.au</a>
Location	Melb PC Yammer online forum
Convenor(s)	Kevin Martin Evening only - 5964 7627 or 0407 343 162

## Programming

Date Jan	Suspended, meet only on request.
Feb-Nov	Suspended, meet only on request.
Dec	Suspended, meet only on request.
Time	By arrangement
Email	<a href="mailto:programming@melbpc.org.au">programming@melbpc.org.au</a>
Location	Melb PC HQ, Level 1, 479 Warrigal Rd, <b>Moorabbin</b> Melway:78.D8
Convenor(s)	John Viney

## Raspberry Pi - Moorabbin

Date Jan	Second Sat of month
Feb-Nov	Second Sat of month
Dec	Second Sat of month
Time	2pm - 4pm
Email	<a href="mailto:raspi-moorabbin@melbpc.org.au">raspi-moorabbin@melbpc.org.au</a>



Location Melb PC HQ, Level 1, 479 Warrigal Rd,  
**Moorabbin** Melway:78.D8  
 Convenor(s) Mohan Gupta - 0421-214-081  
 Rob Brown - 0419 285 806

## Raspberry Pi - Mt Waverley

**Date Jan** Fourth Fri of month  
**Feb-Nov** Fourth Fri of month  
**Dec** No Meeting  
 Time 10am - 12noon  
 Email [raspi@melbpc.org.au](mailto:raspi@melbpc.org.au)  
 Location Wadham House, 52 Wadham Parade,  
**Mount Waverley** Melway:61.E12  
 Convenor(s) John Hall - 9803 2731  
[johnhall@melbpc.org.au](mailto:johnhall@melbpc.org.au)  
 Lance Lloyd - 9884 5559  
[lancelloyd@melbpc.org.au](mailto:lancelloyd@melbpc.org.au)

## Sunbury Daytime - New Users

**Date Jan** No Meeting  
**Feb-Nov** First Thu of month  
**Dec** First Thu of month  
 Time 9:30am - 12noon  
 Email [sunburydaytime@gmail.com](mailto:sunburydaytime@gmail.com)  
 Location Sunbury Senior Citizens Centre (back  
 room), 8 O'Shannassy Street,  
**Sunbury** Melway:382.E4  
 Convenor(s) Kevin Hale - 9740 5786

## Sunbury Daytime - Advanced

**Date Jan** No Meeting  
**Feb-Nov** Second Thu of month  
**Dec** Second Thu of month  
 Time 9:30am - 12noon  
 Email [sunburydaytime@gmail.com](mailto:sunburydaytime@gmail.com)  
 Location Sunbury Senior Citizens Centre (back  
 room), 8 O'Shannassy Street,  
**Sunbury** Melway:382.E4  
 Convenor(s) Kevin Hale - 9740 5786

## Sunbury Daytime - Main Meeting

**Date Jan** No Meeting  
**Feb-Nov** Third Thu of month  
**Dec** No Meeting  
 Time 9:30am - 12noon  
 Email [sunburydaytime@gmail.com](mailto:sunburydaytime@gmail.com)  
 Location Sunbury Senior Citizens Centre (back  
 room), 8 O'Shannassy Street,  
**Sunbury** Melway:382.E4  
 Convenor(s) Kevin Hale - 9740 5786

## Sunbury Daytime - Maintenance & Linux

**Date Jan** No Meeting  
**Feb-Nov** Fourth Thu and Fifth Thu of month.  
**Dec** No Meeting  
 Time 9:30am - 12noon  
 Email [sunburydaytime@gmail.com](mailto:sunburydaytime@gmail.com)  
 Location Sunbury Senior Citizens Centre (back  
 room), 8 O'Shannassy Street,  
**Sunbury** Melway:382.E4  
 Convenor(s) Kevin Hale - 9740 5786

## Video Inner East

**Date Jan** No Meeting  
**Feb-Nov** Second Mon of month  
**Dec** Second Mon of month  
 Time 7:30pm - 9:30pm  
 Email [rbalse@tpg.com.au](mailto:rbalse@tpg.com.au)  
 Location Copland Room, Ashburton Library, 154  
 High St,  
**Ashburton** Melway:60.C9  
 Convenor(s) Richard Balsillie - 9809 4116

## Video Production - Pinnacle

**Date Jan** Fourth Wed of month  
**Feb-Nov** Fourth Wed of month  
**Dec** No Meeting  
 Time 10:00am - 12:30pm  
 Location Melb PC HQ, Level 1, 479 Warrigal Rd,  
**Moorabbin** Melway:78.D8  
 Convenor(s) Wayne Spicer - (03) 5971 1617  
[spisawn@optusnet.com.au](mailto:spisawn@optusnet.com.au)  
 Tony Pickup - 9878 0706  
[tonypickup@optusnet.com.au](mailto:tonypickup@optusnet.com.au)

## Video Production - Sony

**Date Jan** Second Wed of month  
**Feb-Nov** Second Wed of month  
**Dec** Second Wed of month  
 Time 10am - 12noon  
 Location Melb PC HQ, Level 1, 479 Warrigal Rd,  
**Moorabbin** Melway:78.D8  
 Convenor(s) Roger Wragg  
[rdwragg@fastmail.fm](mailto:rdwragg@fastmail.fm)  
 Bob Flack

## WAFFLE - wine & fine food lovers event

Date Jan	No Meeting
Feb-Nov	First Wed of month
Dec	First Wed of month
Time	9:35pm (after the Monthly Meeting)
Email	<a href="mailto:phil@melbpc.org.au">phil@melbpc.org.au</a>
Location	Fong's Chinese Restaurant, 725 Centre Rd (cnr Francesco St), <b>Bentleigh East</b> Melway:77.J1
Convenor(s)	Phil Lew - 0418 567 019 Tom Rado - 9807 4072

## Website Design - Tutorials

Date Jan	No Meeting
Feb-Nov	Fourth Sun of month
Dec	No Meeting
Time	2pm - 4pm
Email	<a href="mailto:webdesign@melbpc.org.au">webdesign@melbpc.org.au</a>
Location	Melb PC HQ, Level 1, 479 Warrigal Rd, <b>Moorabbin</b> Melway:78.D8
Convenor(s)	Fleur Stephens - 0407 330 963

## Website Design - Troubleshooting

Date Jan	No Meeting
Feb-Nov	Fourth Sun of month
Dec	No Meeting
Time	4pm - 6pm
Email	<a href="mailto:webdesign@melbpc.org.au">webdesign@melbpc.org.au</a>
Location	Melb PC HQ, Level 1, 479 Warrigal Rd, <b>Moorabbin</b> Melway:78.D8
Convenor(s)	Fleur Stephens - 0407 330 963

## Windows Plus

Date Jan	No Meeting
Feb-Nov	Third Sat of month
Dec	No Meeting
Time	10am - 12noon
Email	<a href="mailto:winplus@melbpc.org.au">winplus@melbpc.org.au</a>
Location	Melb PC HQ, Level 1, 479 Warrigal Rd, <b>Moorabbin</b> Melway:78.D8
Convenor(s)	John Swale - 0417 530 766 Barry Stone

## Wyndham PC Users/Multimedia

Date Jan	No Meeting
Feb-Nov	Third Tue of month
Dec	Second Mon of Dec for break-up party.
Time	7:30pm - 9:30pm
Location	Room 3, Central Park Community Centre, 80 Lonsdale Circuit (off Franklin Blvd), <b>Hoppers Crossing</b> Melway:206.J1
Convenor(s)	John Healey <a href="mailto:jpfh@melbpc.org.au">jpfh@melbpc.org.au</a> Brian Hallam - 0407 493 454 <a href="mailto:b_hallam@yahoo.com">b_hallam@yahoo.com</a>

## Yarra Ranges

Date Jan	No Meeting
Feb-Nov	Fourth Tue of month
Dec	Third Tue of month
Time	9:15am - 12:30pm
Email	<a href="mailto:yrig@melbpc.org.au">yrig@melbpc.org.au</a>
Location	Japara Living and Learning Centre, 54-58 Durham Rd, <b>Kilsyth</b> Melway:51.J5
Convenor(s)	Bryan Paten - 0429 430 640 Shane Mason - 9733 5390



# Membership Drive

**Introduce a new member\*  
to Melbourne PC User Group and receive credit  
towards your membership fees.**

Did you know that Melb PC held its first meeting in November 1983?

Yes! it's true.

The group flourished and in 1993 started its own Internet service, becoming one of the founding suppliers of the Internet in Australia, and it is still a licensed ISP. Melb PC is Australia's largest and most active personal computer/technology group with thousands of members participating in more than 40 Special Interest Groups (SIGs) that meet regularly throughout Melbourne.

New members will receive all the benefits you already enjoy – the digital newsletter, the help lines, the Special Interest Groups (SIGs), the Monthly meetings and access to mobile broadband, personal email or IP4 Rental/Web Hosting/Private email Hosting, Microsoft OS discounts and you will be helping your club to grow.

You know how much you enjoy being part of Melbourne PC User Group. So why not bring along a friend to enjoy it too? Prospective new members are always warmly welcome at the Monthly Meeting and SIG Meetings.

Each new member\* you enrol gives you **three months credit** towards your membership renewal (approx. \$24.00 value against a full membership). The more new members you enrol, the more credit towards your next membership renewal.

(\* This does not include Family members or anyone re-joining within 12 months of leaving Melb PC).

## INVITATION

### Interested in Computers and Technology?

You are invited to attend the Monthly Meeting of

Melbourne PC User Group

7pm, first Wednesday of each Month

Unit 26, 479 Warrigal Road, Moorabbin (Melways 78 C8)

#### PROGRAM

- **Q&A**—your puzzling computer questions answered
- **President's Report**—The latest update on club news
- **Presentations**—one or two relevant presentations by Guest speakers on technology news.







# MELBOURNE PC USER GROUP INC.

## MEMBERSHIP APPLICATION FORM

Title	First Name	Last Name	
Business Name			
Address			
Suburb			Post Code
Phone		Mobile Number	
DOB	Preferred Email Address		

SUMMARY		Additional Family Members or Corporate Representatives (Maximum 2 names)			
Individuals	\$95 <input type="checkbox"/>	Title	First Name	Last Name	Phone
Additional Family Members (Spouse and children)	\$25 <input type="checkbox"/>	Title	First Name	Last Name	Phone
Pensioners/Adult students A (25+)*	\$80 <input type="checkbox"/>	Title	First Name	Last Name	Phone
Students B (14-25 yrs.)	\$35 <input type="checkbox"/>	Title	First Name	Last Name	Phone
Corporate	\$190 <input type="checkbox"/>				
(One membership is two representatives)					
TOTAL: \$ <input type="text"/>		Please provide emergency contact details below.			
		Full Name.			
		Phone no.			

Referred by member: \_\_\_\_\_ full name or membership number /SIG\_\_\_\_\_

### Terms and conditions

- Adult students A must attach a photocopy of their student card or letter from their educational institution confirming full student status.
  - All student B members must have a Student Card and have evidence of their age at time of joining.
  - Pensioners must attach a photocopy showing both sides of their Centrelink Pension Concession Card.
- Change of family member(s) must be identified in writing to the club secretary.
- I hereby apply for membership of Melbourne PC Users Group Inc. (A000329V) and agree to abide by its rules while I remain a member.

Signature \_\_\_\_\_ Date \_\_\_\_/\_\_\_\_/\_\_\_\_

### Payment Details

Name on Card	Expiry Date
Credit Card Number	
Signature	Date ____/____/____

### Email User Name Selection

List the user ("login") names you would like in order of preference. Write very clearly, to avoid our confusing certain letters. User names are expressed in lower case letters and must represent your real name in some recognisable way e.g. "John J. Jones" might request user names such as "john", "johnj", "jjones", etc. Any user name that is already allocated or deemed unsuitable in the opinion of the system administrators will not be allocated.

Choice 1. \_\_\_\_\_@melbpc.org.au

Choice 2. \_\_\_\_\_@melbpc.org.au



## MELBOURNE PC USER GROUP INC.

ABN 43 196 519 351

(Victorian Association Registration No. A0003293V)

Unit 26, 479 Warrigal Road, Moorabbin Vic 3189 Australia

*"Members helping Members"* Telephone: (03) 9276 4000

14-Dec-2015

# OFFICE 365 PRO PLUS

## 1 Year Subscription



Word



Excel



PowerPoint



OneNote



Access



Publisher



Outlook

### Microsoft Office 365 ProPlus for MelbPC Members

Subscriptions for Microsoft's desktop program suite Office 365 ProPlus are now available to Melbpc members at a reduced rate.

The programs included are; Word, Excel, OneNote, PowerPoint, Outlook, Publisher and Access. Members who take up this offer will be able to install the suite on up to fifteen different devices: 5 computers (PC or Mac), 5 tablets (iOS/Android/Windows) and 5 smartphones (iOS, Android, Windows). The new 2016 versions are available now.

Microsoft Office ProPlus is available to members for an annual subscription, set for the first year and payable by members in advance. (\*) **Renewal for each year will reflect Microsoft's current price at the time of renewal.**

After payment members will be able to download the program suite onto their own computers using their Office 365 login details (the same as they already use for email and other cloud services). As long as the subscription is maintained, members will receive updates and upgrades to the latest version of Office.

Our existing Office 365 Enterprise service provides the 'cloud' versions of some Office applications: Word, Excel, PowerPoint and OneNote. These can be used during a login to Office 365 via the web. They do not include all of the features available on the desktop versions. Office 365 ProPlus provides the full versions of those applications, and others not available at in the cloud at all: Outlook, Publisher and Access. (Publisher and Access are not available in the Mac OS X version.) The ProPlus programs can be used when the computer is offline and not connected to the internet, as they are installed directly on the computer (or tablet/ smartphone).



Skype for  
Business



InfoPath



OneDrive  
for Business

# November Calendar

<div>  <div>V3 – updated 24-Oct-2017</div> <h2>SIG &amp; Other Meetings — Nov-2017</h2> </div>						
Sun	Mon	Tue	Wed	Thu	Fri	Sat
<b>Legend</b> SIG meeting at Melb PC HQ, Moorabbin. Non-Moorabbin meeting. Cancelled Meeting Changed Meeting To be confirmed	<b>Changes</b> Please advise changes to: <a href="http://calendar-admin@melbpc.org.au">calendar-admin@melbpc.org.au</a>		<b>1</b> <b>North East Genealogy SIG</b> Heidelberg 10am - 12noon <b>MONTHLY MEETING</b> Melb PC HQ, Moorabbin 7pm – 9:30pm then Supper (WAFFLE) at Fong's 9:35pm	<b>2</b> <b>Sunbury Daytime SIG</b> New Users 9:30am - 12noon	<b>3</b> <b>Essendon SIG</b> Main meeting Avondale Heights 9:30am - 12noon <b>Multimedia Home Entertainment SIG</b> Mount Waverley 10am - 12noon	<b>4</b>
<b>5</b>	<b>6</b>	<b>7</b> <b>PUBLIC HOLIDAY</b>	<b>8</b> <b>Video Production – Sony SIG</b> Moorabbin 10am - 12noon <b>North East Daytime &amp; Photography SIG</b> Heidelberg 10am - 12noon <b>Communications SIG</b> Moorabbin 7pm – 9:30pm <b>Microcontroller SIG</b> Moorabbin 7pm – 9:30pm	<b>9</b> <b>Sunbury Daytime SIG</b> Advanced 9:30am - 12noon <b>East SIG</b> Blackburn South 7:30pm - 9:30pm	<b>10</b> <b>Essendon SIG Open Forum</b> Avondale Heights 9:30am - 12noon <b>Hardware SIG</b> Mount Waverley 10am - 12noon <b>Casey SIG</b> Beaconsfield 1pm - 3:30pm	<b>11</b> <b>Linux Workshop – Moorabbin SIG</b> 10:30am - 1:30pm <b>Microcontroller Workshop SIG</b> Moorabbin 12noon - 5pm <b>Raspberry Pi – Moorabbin SIG</b> 2pm - 4pm
<b>12</b> <b>East Workshop &amp; 3D Printing SIG</b> Mount Waverley 10am - 2pm	<b>13</b> <b>Access (database) and Excel SIG</b> Moorabbin 6:30pm – 8:30pm <b>Video Inner East SIG</b> Ashburton 7:30pm - 9:30pm	<b>14</b> <b>Investment Tools - WASINT SIG</b> Moorabbin 10:30am - 12:30pm	<b>15</b> <b>North East Android SIG</b> Heidelberg 10am - 12noon	<b>16</b> <b>Sunbury Daytime SIG</b> Main Meeting 9:30am - 12noon <b>Bayside SIG</b> Brighton 10am - 12noon <b>Music SIG</b> Moorabbin 7:30pm – 9:30pm	<b>17</b> <b>Essendon SIG</b> Various topics. Avondale Heights 9:30am – 12noon <b>Digital Images SIG</b> Including Photoshop Mount Waverley 10am - 12noon <b>Melb PC Committee</b> 1pm, Mt Waverley	<b>18</b> <b>Windows Plus SIG</b> Moorabbin 10am - 12noon
<b>19</b> <b>Beginners East (BEAST) SIG</b> 10am - 12:30pm <b>MACE (Atari Computers) SIG</b> Moorabbin 10am - 2pm <b>Genealogy East SIG</b> Vermont South 1pm - 3:30pm	<b>20</b> <b>Mornington Peninsula SIG</b> <b>General inc Q&amp;A Mornington</b> 9:30am - 12noon <b>Family History Mornington</b> 1:30pm - 4:30pm <b>Northern Suburbs Linux SIG</b> Watsonia 7:30pm – 9:30pm	<b>21</b> <b>Wyndham PC Users/Multimedia</b> Hoppers Crossing 7:30pm – 9:30pm	<b>22</b> <b>Video Production – Pinnacle SIG</b> Moorabbin 10:00am – 12:30pm <b>Mornington Peninsula SIG</b> <b>Family History – Advanced DNA Mornington.</b> 2pm - 4pm	<b>23</b> <b>Sunbury Daytime SIG</b> Maintenance & Linux 9:30am - 12noon	<b>24</b> <b>Raspberry Pi - Mt Waverley SIG</b> 10am - 12noon <b>Casey Workshop SIG</b> Beaconsfield 1pm - 3:30pm <b>PC Update – Articles Deadline</b>	<b>25</b> <b>Microcontroller Workshop SIG</b> Moorabbin 12noon - 5pm
<b>26</b> <b>Everything Apple SIG</b> Moorabbin 2pm - 4pm <b>Website Design SIG</b> Tutorials Moorabbin 2pm - 4pm Troubleshooting Moorabbin 4pm - 6pm	<b>27</b>	<b>28</b> <b>Yarra Ranges SIG</b> Kilsyth 9:15am - 12:30pm	<b>29</b> <b>PC Update – Reports Deadline</b>	<b>30</b>	<b>Other SIG (Special Interest Group) information:</b> <a href="http://www.melbpc.org.au/interest-groups/">http://www.melbpc.org.au/interest-groups/</a> <b>Recent Changes:</b> <a href="http://www.melbpc.org.au/interest-groups-resources/sig-changes/">http://www.melbpc.org.au/interest-groups-resources/sig-changes/</a>	<b>Have A Question Post it on Yammer</b> <b>Yammer:</b> <a href="http://yammer.com/melbpc.org.au/">http://yammer.com/melbpc.org.au/</a>