



Published by
Melbourne PC User Group Inc.
Suite 26, Level 1, 479 Warrigal Road
Moorabbin, VIC 3189

Office hours 9.30am-4.30pm (Mon-Friday)

Office will be closed over Christmas.

Closing Friday 22nd and will open on 8th Jan.

Phone (03) 9276 4000
Email office@melbpc.org.au
ABN: 43 196 519 351
Victorian Association Registration
A0003293V

PC Update Newsletter - Editor: George Skarbek
editorpc@melbpc.org.au

Librarians: Clemens Pratt 9802 5501
cpratt@melbpc.org.au
Choy Lai cplai@melbpc.org.au

Proof Readers:
Harry Lewis
Tim McQueen

Committee Executive

President	John Hall
Vice President	Frank Maher
Secretary	John Swale
Treasurer	Stewart Gruneklee



Melb PC User Group Inc. is a member of the Association of
Personal Computer User Groups

PC Update

December 2017

The Newsletter of Melbourne PC
User Group Inc.

Monthly Meeting Live Stream

Tune in here at 7.00pm on Wed 7th of December to
view the Monthly Meeting live over the Internet.

Test Transmission usually commences at around 6.30pm

<http://tv.melbpc.org.au>

Contents

Editorial.....	2
President's Report November 2017	2
Monthly Meeting.....	4
Outgoing committee's final cost savings.....	5
The Photography Competition is Back!	5
Short Story Contest	6
The Anatomy of a Death Certificate	6
Computer Users of Erie By Harold D. Kelley	6
Another Melb PC member benefit	8
By George Skarbek.....	8
Close Your Windows before You Leave on Vacation.....	10
By Greg Skalka, Under the Computer Hood UG	10
SIG Reports	12
East SIG Report – November 2017	12
Northern Suburbs Linux SIG	14
November Meeting Report by Paul Addis	14
Special Interest Groups.....	18
December Calendar	27
January Calendar	28

Editorial

This is my last editorial. However, I am very pleased to announce that David Stonier-Gibson has agreed to take over the role editor.

David is a newly elected committee member who is involved in robotics and among his many interests is photography. He not only won the Melb PC photography competition but he won the third place as well.

David has the marketing portfolio on the committee and has outlined several new and interesting ideas to put into practice in the new year. The committee has already voted to allocate money to one of his proposals.



Our Statement of Purpose

The purposes of the Association are to conduct on a non-profit basis activities to help members learn and use systems and devices using various technologies, especially computing, software, and communications technology (inc. the Internet and World Wide Web, personal computers & devices), to achieve the following outcomes;

- Advancing computer literacy;
- Advancing education and the exchange of ideas;
- Keeping members up to date on developments in computer and information technology and helping members to exchange information;
- Representing members in public debate in areas of interest including law reform proposals;
- Engaging with similar organisations; and
- Carrying out activities that benefit the Association

President's Report November 2017

Committee achievements

This past year has been a very difficult time for our Committee and it is a credit to George Skarbek that he has led us out of the disastrous situation that was facing us in 2016 and has given us a good basis on which to continue improving our services to our Members.

As George mentioned in his last Report, criminal charges have been brought against our Office Manager (who is currently on paid sick leave) on several counts of making false documents relating to activities within the Melbourne PC User Group and she has been summoned to appear in court in December.

As her departure from our Office in January was so sudden and unexpected we were unable to obtain any passwords to our major Office and Accounting applications, amend our Banking Details or even update our “outward facing” web pages such as Facebook etc. and despite several pleas from us she has still not provided us with the much needed information on any of these.

As a result of this, our Secretary – John Swale and Treasurer – Bill Ford had to largely start from scratch in order to get our Office back up and running effectively.

I would like to take this opportunity to thank both John and Bill for the enormous amount of effort and sheer man hours that they have given to our Group over the past year.

New Membership Management System

Our new Membership Management System went live on Monday November 6th and the general response from our Members has been very favourable.

Several Members were invited to renew their Membership Payments via our Credit Card/Paypal interface and these have been processed successfully.

As a result, this month’s renewal reminders will be sent out via email rather than Letter post and we would be most grateful if you could sign in to the “Members Area” on our web site to make sure that we have the correct email address for you (please access- <http://www.melbpc.org.au/wp-login.php>).

Committee Portfolios and Reporting Requirements

As part of our first meeting of the 2017-18 Committee I have asked all Committee Members to take part in one or more Portfolio’s.

There are the existing “Executive” Portfolio’s of course such as “Secretary” (John Swale) and Treasurer (Stewart Gruneklee) then there are the traditional “Other Portfolios” such as “Sig Co-ordinator” and I have asked Paul Woolard to help John Morris in this role.

George Skarbek has taken over the “I.T. & Telephone” Portfolio from me and it would be good if someone could assist George in this Role. (perhaps someone from the Yammer community who has I.T. skills)?

At the last Meeting I asked Harry Lewis to take on the “Office 365 Portfolio” and again, we will need someone to cover for Harry when he is on holiday etc. so anyone reading this would be most welcome to assist. (Please contact Harry on Harry@melbpc.onmicrosoft.com).

David Stonier Gibson has taken on the “Marketing Portfolio” but we would like to build a team of volunteers to assist him in this task. If you feel that you can help please contact David on dg15@splatco.com .

I have asked Phil Lew to take over the “Volunteers Co-ordinator” portfolio and assist George Skarbek in looking after the equipment and volunteers who keep our infrastructure up and running in Moorabbin.

I have also asked Frank Maher to oversee the total costs of the Moorabbin Premises and represent us on the Body Corporate etc. with a view to reducing the overheads that are incurred in Moorabbin as low as possible.

Finally, it is my sad duty to report that Lynn Hammet has resigned from the Melbourne PC Committee due to external pressures on her time. We will really miss having Lynn on the Committee as she has already proved that a woman’s voice can placate some of the unhappy Members who contact us from time to time.

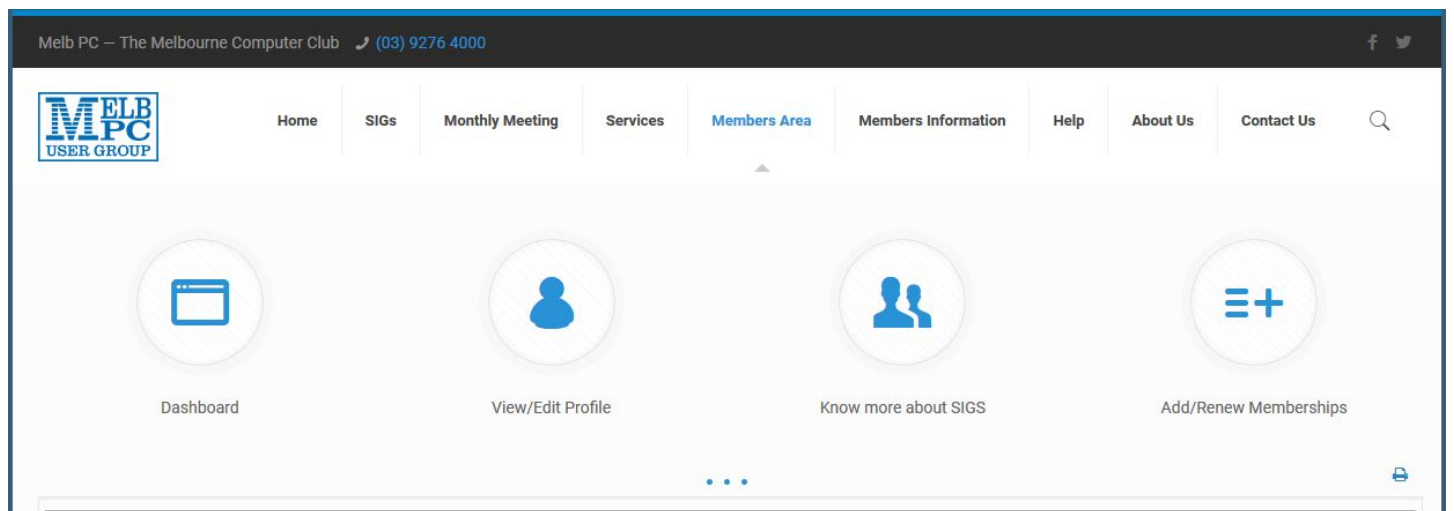
I am going to try not to be “sexist” in this comment, (although I am sure that I will draw criticism from someone), but I honestly believe that a Woman on the Committee can give a more reassuring response to our Members complaints and can convince them that we really do care about them and therefore I would very much like to have another woman step up to take Lynn’s place on the Committee.

If you are at all interested in finding out what is involved please feel free to write to me personally at johnhall@melbpc.org.au and I will keep our discussions in confidence.

Updating your Membership Details

During the course of our Systems Testing for the new Membership System it became clear that a lot of our Membership Data was out of date (people may have changed phone numbers etc. but our old Membership System still held the old number).

As we have no way of knowing what your correct details are we would ask you to sign in to our “Members Area” from our Web Site at www.melbpc.org.au and update your details by clicking on the “Edit Profile” button as below:-



John Hall,
President,

Monthly Meeting

Wednesday 7th of December

At 7.00 pm sharp the meeting will open with our regular Q&A Session.
Then we will hear the President’s Report.

At 7:30 At 7:30 our speaker will be Dave Botherway who will give us an update on recent NBN issues facing members and explain some of the tools available to track progress.

At 8:00 p.m. George Skarbek will be giving us a demonstration on a good and free image viewer.

After the break, John Hall will talk on: "The Melbourne PC Membership System" - John will give an update on how we are using the System to better communicate with Members and the types of facilities that we could be giving our Members in the future.

At about 9:25 George Skarbek will give a short presentation of What's New.

The meeting will close at 9:30 pm.

After the meeting, we get together for WAFFLE@FONG. The WAFFLE SIG ("Wine And Fine Food Lovers' Event") will be at FONG's Chinese Restaurant, 725 Centre Rd Bentleigh East, Corner of Francesco Street, Melways: 77: J-1

If you can't make it to Moorabbin, be sure to tune in to <http://tv.melbpc.org.au> for a live broadcast of the meeting. Test transmission usually begins at around 6.30pm.

You can also watch it on:

<http://www.melbpc.org.au/live/monthly-meeting/>

Outgoing committee's final cost savings

In late November, the 5.1 KW solar panels were installed and are operational. The average generation from these panels, after the inverter and other minor losses are added will save Melb PC just over \$1,000 a year. This is based on current electricity prices but these are expected to rise next year and this will increase our savings.

Also in late November, I was able to find a better maintenance organisation to look after our phone system. This covers not only the office but the softphones for iHelp. Anyone ringing the office number and requiring iHelp will have their phone call re-routed to a member of that team. The team can assign priority on a daily or hourly basis as to who will first receive that call.

As a result, Melb PC will not only have better service but will also save about \$1,800 per year.

The overall savings in the running costs as a result of these two actions will save us close to \$3,000 pa.

George Skarbek,
Past President

The Photography Competition is Back!

Lets have some fun, engage with the club and show off your creativity. We want members to dust off their camera lens, unfurl the tripod and charge the flash gun. Every month, from February up until and including December we will be holding a photo competition. Each month we will give you an item that must be included in the photo. The February the item is a Computer Keyboard. For March, the item is Mouse. All items will be announced in the coming months. All eleven winners (and the rules state because I just wrote them, that we must have at least 3 entries per month for a winner to be chosen) will be used for the inaugural MelbPC 2019 Calendar. The winner for February, will be "February" on the calendar, the March winner will be "March" on the calendar etc etc.

The entries must be all your own work. Each member may enter up to two photos per month but that will only count as one entry. We want at least three member entries per month, at least!!

This competition is open to all financial members who are not professional photographers.

If the photo does not contain the item for that month, it will not be considered.

The photo will remain your property but you will need to sign an agreement allowing us to use the photo for the calendar and in other promotional areas, but for club purposes only.

All images are to be submitted via email to editorpc@melbpc.org.au and I will reply to every submission. If you do not receive a notification within two days then please write to president@melbpc.org.au

All entries must be named according to the specified format: your member number-title.jpg An example is: 12345-Worlds best technology picture The judge will receive only the image and its title, and no membership number.

We hope to have well known professional photographers as judges plus the Vice president and the editor as judges.

Short Story Contest

In 2018, we will be holding the inaugural MelbPC Short Story Contest. It's called short as the story can only be 400 words or less - but not so fast Shakespeare. The one main rule is that each month, the story must contain one word (repeated many times if you wish) that is nominated by us. For S**ts and Giggles, the nominated words will be the same as those in the Photo Contest. Therefore, the word for February is Keyboard. The word for March is Mouse. You might be able to spot a pattern here. The nominated words must appear in the body of the story. It can be used as many times as you wish. The judges will smile on those that use the word more than once but if it's only used once and it's a wonderful story, it could be a winner. Artistic licences can be collected at the door.

The usual caveat about ownership apply. It remains your story for ever and a day but we have the right to use it for club promotional material. etc. To make it fair on all(?), we need to have three (3) stories per month from three (3) separate writers. If we do not get enough entries, there will be no winner that month. No published authors need apply.

Entries close (because there is no club magazine in January) 20th January 2018. Winners announced in February PC Update. Judges will be selected Committee members and hopefully, a "celebrity" writer/author.

Writers - to your pens please.

The Anatomy of a Death Certificate

Computer Users of Erie By Harold D. Kelley

Sue Mueller, Contributor, Family Grave, presented a program entitled "The Anatomy of a Death Certificate." She provided the SIG members with a handout, "Find Death Certificates Online (Free)." It is included, with Sue's permission, at the end of this meeting's summary.

Sue explained that the new death certificates don't have as much information on them as the old ones. However, since it is 50 years before you can obtain death certificates that are available to the public, most of the ones we see will be very interesting because they are older.

Different states handle death certificates differently, but in Pennsylvania, you can get them free. Overall, the best site to use for various states, is the one listed second on the handout sheet. When you must pay a fee for a death certificate, the best site is the one listed last on the handout sheet.

On a death certificate, you can get **death facts, personal facts, genealogical information**, what happens to the body, **medical and health information** such as the cause of death, and what contributed to the death and how long it had been going on.

Concerning **death facts**, those who are using either Family Tree Maker or Ancestry.com, not all the information on the death certificate is merged into those programs. There is some good information that doesn't get merged. The only things that are merged are the name, the city or town and county of birth and the death. The only thing you are guaranteed to get accurately is where the person died.

On a death certificate, the parents' names will be there, including the mother's maiden name, if the informant providing the information knows it. Sometimes they write "unk" for unknown. What is merged into Family Tree Maker is how it is indexed. Death facts include the deceased's name, where he/she died, the specific location of death, such as a hospital, state hospital or alms house. If a person dies in a hospital, state hospital or alms house, some information may not be accurate, because the informant may not be knowledgeable, but in these cases, the medical information and cause of death are likely to be accurate.

You also get **personal information** on a death certificate. If the deceased is a family member, the live people, if they are family giving the information, are upset, so if they know the information, they may not get it right, or they may not even know the information, in which case they have no hope of getting it right. For example, they may not know the state in which the person was born.

Sue said she will sometimes check the census data to check whether the person was born in Ohio or Pennsylvania, for example. The personal information also includes whether the person was married, divorced, single or widowed, place of residence and occupation. Social Security numbers didn't come into play until the late 1930's, so someone born after that may have a number listed. It is usually asked if the person served in the military. Since many of these facts would not be merged into Family Tree Maker or Ancestry.com, one would have to enter them manually into Facts in their program.

What kind of **genealogical information** can you get on a death certificate? Included is the father's name and sometime where he was born, and sometimes the town or city, not just the state. The mother's name and maiden name is asked for, and often where she was born. The full name of the spouse, and if the spouse is still living, is asked for; this can be important for searching for more information. It is not asked whether or how the informant is related to the deceased.

The death certificate is created right away. The funeral home obtains the number of copies of the death certificate that will be required. The certificate will also have the

Find Death Certificates Online (Free)

*Generally accepted standard
for release of vital records to public:
Birth - 105 years; **Census** - 72 years; **Death** - 50 years*

Vital Records, <http://vitalrec.com/>: a comprehensive resource for locating vital records

<https://www.deathindexes.com/>: death records listed by state

Cyndi's List Death Records: <http://www.cyndislist.com/death/>

National Archives: <https://www.archives.gov/research/vital-records>

Family Search: <https://familysearch.org>. Step-by-step wiki: <https://www.archives.gov/research/vital-records>

Death resources, by state:
<http://publicrecords.onlinesearches.com/Death-Records.htm>

Genealogy bank, free SSDI search:
<https://www.genealogybank.com/explore/ssdi/all>

CDC Vital records: <https://www.cdc.gov/nchs/w2w/index.htm>

Free access to Pennsylvania death certificates for PA residents who are not ancestry subscribers. How to register on this site: <http://www.phmc.pa.gov/Archives/Research-Online/Pages/Ancestry-PA.aspx#.V1V8k-SgSqQ>

Pennsylvania death certificates for ancestry subscribers
<http://search.ancestry.com/search/db.aspx?dbid=5164>

State by state death certificate ordering information (\$ fee)
<https://www.everplans.com/articles/state-by-state-death-certificate-ordering-information>

place of burial and sometimes the name of the cemetery. It will tell whether the dispersal of the body is by cremation or burial. It is noted if the body is taken out of state. The funeral home will be listed as well as the coroner.

With regard to **medical and health information**, the death certificate will give the cause of death, contributory causes, how long the person was sick, name of the attending doctor and the name of the doctor who pronounced the death.

Concerning the cause of death, in addition to what is written on the death certificate, there is an ICD code (International Classification of Diseases) which identifies the cause of death. It is maintained and updated by the World Health Organization regularly. It was developed in the late 1880's. We started using it in 1898. One should always check out the revision to the ICD code right before the death date to be sure to get the most updated information. If the written cause of death is difficult to read, one should go with the ICD code given on the death certificate. The address for the ICD information is:

<http://www.wolfbane.com/icd/index.html> . The information is free and is intended to be used universally.

For those using Ancestry.com and Family Tree Maker, there are some facts that will not be merged into Family Tree Maker, such as the name of the informant, the deceased's occupation and the cause of death. Where the burial is will be noted, but not the name of the cemetery. The name of parents may be given, if still living; this information could be important for genealogical purposes. Facts that are not merged into Family Tree Maker will have to be put into FTM by hand, using the FTM protocol for adding facts.

Another Melb PC member benefit

By George Skarbek

I believe that a full image backup is an essential insurance policy for all computer users.

Overview

In case the hard disk dies, it is a simple task to restore everything very quickly and easily if you have a full image backup on some drive or USB. An image is a complete clone of the entire hard disk. It has your data, all the programs and configuration files plus Windows and all the patches.

If your hard disk dies and you have an image backup

Then you purchase a new hard drive or SSD, install it then boot from a rescue CD or USB that Acronis would have reminded you to create. From the Restore menu, select the drive that has the image and within minutes your computer is back to the point at which the image was created. It will have your desktop, programs, etc.

Probably the best image software is Acronis and as a Melb PC member you can purchase it at half price.

If your hard disk dies and you have backed up all your data files

Then you purchase a new hard drive or SSD, install it into the computer then find the Windows DVD and install Windows. Next you install all your programs, such as Office, image editing software, anti-virus software and all other necessary software. You will have to enter the serial numbers that you have kept for these programs then apply all software patches for Windows and all the programs. Then you can copy back your:

- documents,
- photos,
- music,
- accounting software data,

- desktop icons,
- browser favourites and browser passwords that you have regularly backed up,
- configure the mail client and then restore mail, contacts, etc,
- etc, etc.

I am sure that you get the picture. The full restoration will take about a full day, probably spread over a couple of days, but only if all goes well. Longer if you are missing a serial number or some installation DVD or that you have forgotten to backup browser favourites, or some passwords.

Having done both options, the first option is vastly quicker and there is no chance that some occasionally important program was forgotten.

If you have not backed up your data, all your photos, all documents etc will be irretrievably lost forever.

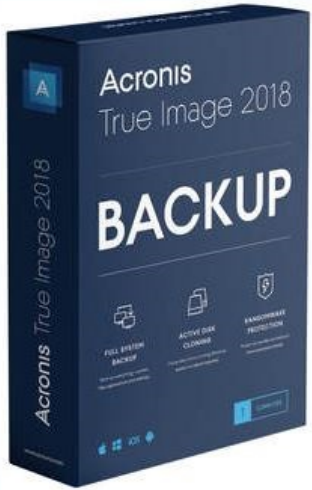
Acronis Options: After installing Acronis, you will be asked to create a bootable rescue device and your backup type and schedule. There are several types. The most common ones are full backups or incremental backups. As to how often they should be run, is your choice. There is no right or wrong way. Full backups every day is the ultimate but it has some disadvantages. One is that the full backup will be large and you will need a large hard drive, on other than drive C even for keeping an even limited number of images.

Another method is to make one full image and then make incremental backups. An incremental backup will only backup any new or altered files. Generally, Windows files do not change often and neither do program files such as Word, Firefox etc. The incremental files are very small compared to the full image and take a fraction of the time to complete. After a certain number of incremental images, a full image will be created. Acronis is smart enough not to back up the swap file, the Temp files and other computer generated temporary files. My recommendation is to start with a full image backup and then daily incremental backups for up to two weeks before the next full backup. Depending on your free disk space you can select to keep one or two months of data. Naturally all this can be automated.

In case of any problems, you can easily restore one file, one sub-folder or the entire hard drive from yesterday's or last week's backup.

Why is Acronis a benefit of your membership?

At the time of writing, purchasing Acronis from Acronis online costs AUD\$62. However, by purchasing Acronis from User Group Relations at: <http://ugr7.com/index.html> will cost US\$25 or about AUD\$31. You just must say the you are a member of Melb PC to purchase at this price.



Acronis True Image 2018 Standard for PC/Mac: This backup utility is a great tool to help you backup your entire hard drive and everything on it or just a few key data files. You can restore your entire hard drive or just a few individual files or folders. It offers full, incremental, or differential backup images, so you can tailor your backups to your specific needs. In addition, you can Clone your main hard drive. Not available to backup to the Internet. This is a must have utility for all end-users. This software is available for both PCs and Mac computers **(List Price: \$50, User Group Price: \$25)**

Close Your Windows before You Leave on Vacation

By Greg Skalka, Under the Computer Hood UG

I've used Microsoft Windows-based computers for probably 90% or more of my computing lifetime. While I've used Apple computers and tablets a bit, and currently use an Android smartphone and a Chromebook regularly, I am without a doubt more experienced with Windows (Win7 and XP) than any other operating system. If compared to languages, I'm somewhat multilingual, but my primary (if not native) language is Windows. That is why it was a difficult decision for me to choose to leave my Windows laptop behind on the weeklong trip I made with my wife to Nebraska to see the total solar eclipse on 8/21/17, and instead use my smartphone and Chromebook on our travels.

On almost every trip I've taken since I bought it on 2012, my Fujitsu Windows 7 laptop has been my traveling companion. From business trips to vacations to weekend getaways, this small, 14" laptop has taken care of all my computing needs while away from home. It has allowed me to connect to the internet (through both wired Ethernet connections and Wi-Fi) for email and information from the web. It temporarily stored the hundreds of digital photos I'd take each day while on ten-day vacations in Hawaii on its hard drive. It aided me in navigation through stored and online maps. It stored electronic copies of our travel documents, camera manuals for reference and books, music and movies to keep me occupied while on the airplane. It even allowed me to write my newsletter column on the plane ride back home, to avoid missing our editor's submission deadlines. Before I had this laptop, my 14" XP laptop performed the same travel duties.

I have been using my 11.6" Acer Chromebook more and more over the last two years. I now use it to take notes at UCHUG board meetings and SCRUGS (Southern California Regional User Group Summit) meetings, as it is much lighter than my laptop and has longer battery life. Because it is so quick to boot up (typically under 15 seconds), it is what I grab to get a quick answer off the web when not sitting in front of my laptop (though I now have an Android smartphone and go to the web on it, I prefer the Chromebook's larger screen).

Two years ago, I even took my Chromebook on a Hawaii vacation along with my laptop; I was not brave enough to take the Chromebook alone. This eclipse trip was the first time it went instead of the laptop (it is also our first vacation since that Hawaii trip – I really need to get out more). I knew the Chromebook would be great for web access, as it boots so fast. It only has Wi-Fi, but few hotels have wired Ethernet available in their rooms these days anyway. Though the Chromebook can't run Thunderbird for email like my laptop, I can still get my Juno email through their web interface.

My main concern with the Chromebook is its lack of internal storage. To capture the entire eclipse experience, we would be taking four still cameras and four video cameras, all digital, on this trip. I could have just bought more extra SD memory cards to use in the cameras, but found I could use an external USB hard drive (2.5" type that gets all its power from the USB cable) as mass storage for photos and videos. The file manager in the Chrome OS does not use the familiar copy and paste; it is a little confusing to the Windows user in that dragging a file from one memory device to another copies it instead of moving it. I practiced on all the cameras before we left and wrote the process on a sticky note on the Chromebook, so I felt the photo storage process using the external USB drive would be OK.

It is funny how technology sometimes comes full circle. In the early days of digital photography, memory cards were small and rather expensive, so a few companies made external photo hard drives. These were small rotating platter drives with a built-in battery and memory card reader or USB OTG (On The Go) interface. You could connect your camera or memory card to one of these photo drives and it could copy off your photos

without any other controlling device like a laptop. I still have a few of these photo drives, but their capacities now seem so small. Today memory cards are large and relatively inexpensive, but I still prefer to copy my photos off to a hard drive; I think it is easier to organize and deal with one hard drive than a bunch of memory cards.

Once we got on the plane to leave on vacation, I discovered the other main issue with the Chrome OS – its lack of support (drivers) for some file types and devices as compared to more the popular Windows. We flew on Southwest Airlines from San Diego to Omaha, through Las Vegas. On one of our flight legs, our plane was equipped with onboard Wi-Fi. Southwest provides some free TV shows and a flight tracker in addition to paid movies and an internet connection (\$8 per day) on their Wi-Fi-equipped planes (projected to be on all their fleet next year). I recall watching the free TV the last time I flew; unfortunately, the streaming video format they use is not supported by the Chrome OS. It does not appear I could have used the paid internet service either, as it only listed Windows, iOS and Android for supported devices. At least I could use the flight tracker on my Chromebook. I tried to watch the inflight free TV on my Android smartphone, but it required a Southwest video app that I would have had to have downloaded from the Google Play store before I boarded the plane.

Once at our destination, the Chromebook proved its worth by providing good and quick internet access at our hotels and copying photos and videos from cameras to the external USB hard drive as needed. Copying whole folders of photo JPEG files worked fine, although there were a lot of files, they were not too large. The video files I was copying were up to 1 GB each, which could take 5 minutes or so apiece, so I chose to copy each video file individually rather than as multiples. It seemed the Chromebook took longer to copy files than my Windows laptop did. Since the Chromebook's processor is not as fast or powerful this would not be surprising, but I'd need to do some testing at home to confirm this.

Viewing the photos and videos on the hard drive also brought out the Chromebook's limitations. It could display the JPEG photo files, but scrolling through them was slower than on my more powerful laptop. The Chromebook could view the AVI and MP4 video files my dashcam and action cams produced pretty well, but the MTS files my digital camera creates in video mode could not be viewed as all. I downloaded an app called VLC from the Chrome OS store to view these .mts files, but the playback was very jerky. My digital video camcorder records in high definition AVCHD format, which the Chromebook cannot handle.

I usually receive around a hundred emails a day on my primary email account (Juno), but I could use the Chromebook to tame my email while on travel. I used the Juno web mail interface about once a day to delete all but the most essential emails, so that I could download them into Thunderbird on my laptop upon my return home. I could of course handle those emails that were critical from the web mail interface, but that proved to be necessary for only a few.

The real star of the traveling tech show proved to be my smartphone. I used it to communicate via texts most of the time, rather than emails. Through the camera app I had installed before we left, I was able to view the three Samsung web cameras in our house on the phone and feel confident everything back home was safe. Unfortunately, at this time the Chromebook does not support all Android apps, so my home web cams could not be viewed on the Chromebook. Google is supposed to be fixing Chrome to allow the use of all Android apps, which will be a big benefit; we Chromebook users are still waiting.

I also used my smartphone to run Google Maps for navigation, though as I feared this worked well only in the major cities. Out in the country (which is most of Nebraska), where there is limited cell coverage, new map data could not always be loaded by Google Maps and location searches could not be made. Fortunately, I also brought my Magellan auto GPS receiver, which contained map files to navigate anywhere in North America. Google Maps did provide much better navigation, traffic and point of interest searching where cell coverage

was good, so we usually ran both the smartphone and Magellan GPS for navigation, using each as appropriate to the situation. In San Diego, we take for granted that we will have good cell coverage as we drive. In Nebraska, away from the major cities the cell coverage can be poor, even along the Interstate highway.

With all the cameras and tech tools we brought, we could have a great vacation and see the eclipse in totality for almost two and a half minutes, taking way more photos and videos than we probably needed. I'd seen partial solar eclipses before, but the totality we experienced was a wondrous thing. The next chance to see a total solar eclipse in the U.S. will be on April 8, 2024, less than seven years from now. It will be visible from Texas through the middle of the eastern U.S. and up to Maine. I'd like to see that one as well. With the way my Google devices worked on this trip, I'd definitely consider leaving Windows at home again. But a lot can change in the tech world in seven years. Who knows what kind of technology I'll have to take on my travels by then?

SIG Reports

East SIG Report – November 2017

By Neil Muller

The November meeting opened with **Paul Woolard** welcoming members followed by Q&A conducted by **George Skarbek**.

Q: I have a small HP B&W laser printer that is still giving good quality prints after many years. As I don't print that often, I turn the printer on when I print and off when I've finished printing. However the on/off button is becoming very unresponsive and I have to jab it up to 10 times to get it to turn on or off. How safe is it to leave the printer on continually in standby mode?

A: Laser printers on standby don't use much power. One option depending where the printer is located, is to turn it on and off at the power point. This will save a small amount of power over the course of a year. If it adheres to the CU standard it will use under a watt in standby. It's up to you, but it shouldn't hurt to leave the printer on standby. Laser printers use power to heat up a very fine black powder onto a drum, which is transferred to the paper and is then fused to the paper at high temperatures. That last step uses about a kilowatt while the paper is going through. For that reason you should never have a laser printer attached to a UPS.

Q: Is there a free and secure VPN that you would recommend?

A: I haven't used a free VPN for a while and it's very difficult to find how secure a VPN is. To intercept data from a VPN, you need specialist equipment, not only to intercept the data packets going through the internet but once you intercept them to break the code.

Can anyone here recommend a good free VPN?

David King – There are websites that give you the top ten free VPNs. A Google search should find them. PureVPN is a well rated VPN but it is not free.

Paul Woolard – If you are looking for a VPN to use in your browser, Opera has a built in VPN and is activated in settings. Another audience member thought the VPN in Opera needs to be installed as an add-on.

Dave Botherway – About a year ago Stuart Bedford gave a presentation at East SIG and recommended TunnelBear and NordVPN. The latter is not free but depending on the time of year can be found for \$35 per year. NordVPN would be very secure as Nord is a very large organisation and NordVPN normally rates at 1 or 2.

Q: My wife and I do a lot of travelling and while away need to do internet banking. Hotel Wi-Fi is terribly insecure so I'm looking at a VPN as a way to improve security.

A: If you're doing banking, security isn't that much of a problem which may surprise many people. For the crooks to break the code they will need to capture a lot of data packets to do any analysis. I recommend when connecting to your VPN, go straight to your bank, do what you have to do and log straight out. There would be very little exposure as in

that time the crooks would have to intercept your IP address from the Wi-Fi. It would then take 20 to 30 minutes with a very fast computer to crack your password and then they have to crack the VPN. In that time you will have logged out of your bank. Security in a hotel would be much more secure than Wi-Fi in say a food court.

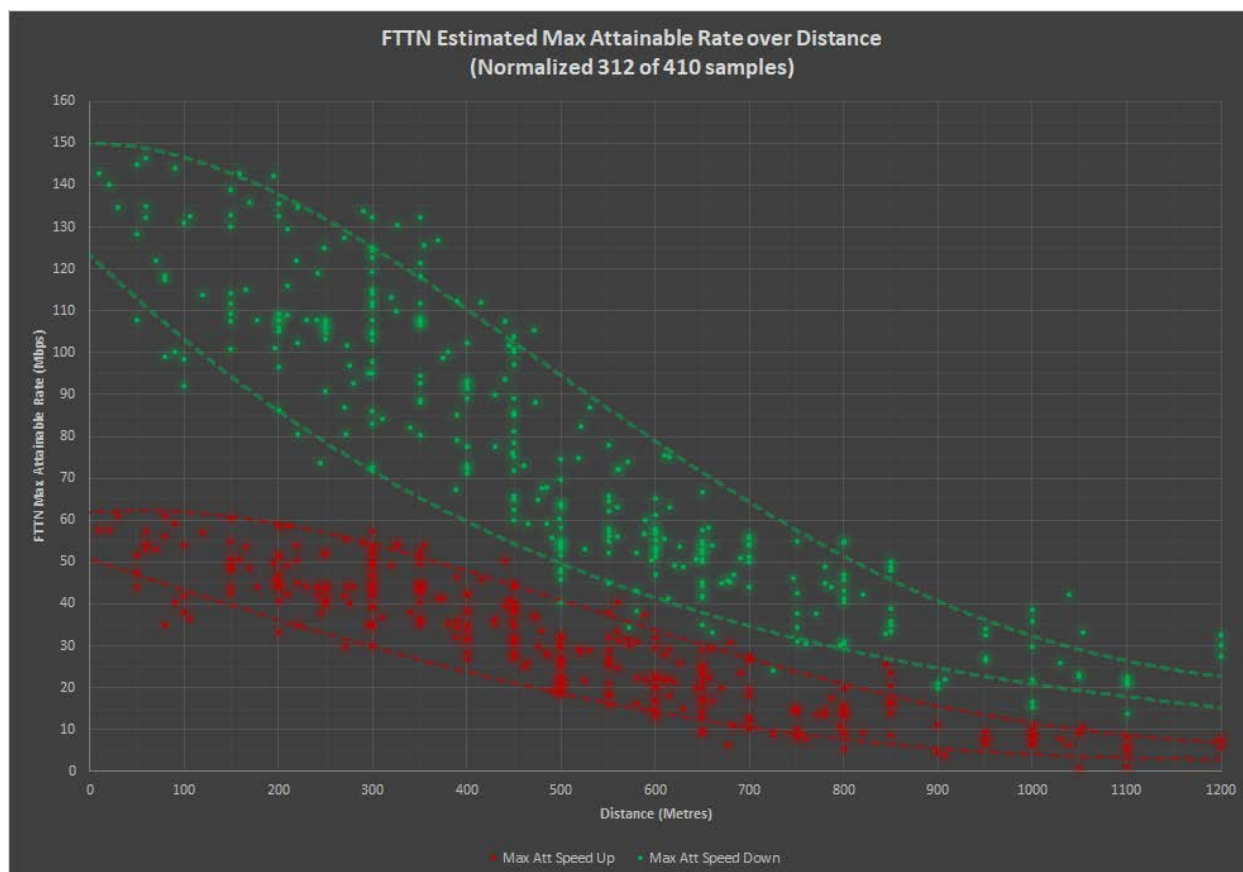
Member Comment

The Wi-Fi we get when travelling is often free so we use Kaspersky as a live checker. Kaspersky will check if the free Wi-Fi sites are unsecure and recommend not using them if they are. However when you're in a hotel or McDonalds there's no other alternative. Kaspersky internet security has a feature called Safe Money that we use when banking while travelling. When making payments on the internet, Kaspersky Safe Money checks whether the site is on a known safe list then launches a special protected browser that guarantees your financial operations.

After Q&A **Dave Botherway** gave a presentation titled "NBN Update". Dave connected to a number of websites to show tools available to everyone to check their current or proposed NBN connection. Dave highlighted two websites that he uses, the first the official NBN website (nbnco.com.au) and the second an unofficial privately run site.

On the NBN site, the rollout map at <https://www.nbnco.com.au/learn-about-the-nbn/rollout-map.html> shows information on the current availability of the NBN in your area. Purple areas indicate that NBN services are available and brown that building has commenced. Where no colour is shown the connection date is likely to be some time off. When you zoom in to property level you can "drop a pin" on your property to determine the type of connection and when it's likely to be available.

Many people with FTTN (Fibre to the Node) connections have been sold plans with speeds that are physically impossible to achieve. Telstra and Optus have recently been ordered to repay those people affected. The maximum speed of a FTTN connect depends on how far a property is from the node. At 1km, the maximum distance that NBNco recommends, the top speed likely is between 25 and 30 Mbps. Dave presented a graph (shown below) from the second website showing actual speeds achieved (y axis) against the distance from the node (x axis). The download speeds are shown in green and up load speeds in red.



The second website is an unofficial site showing technical information and speed estimates. It can be found at <http://nbnmtm.australiaeast.cloudapp.azure.com/>. Like the NBN Co website, this site opens with a map of Australia. By zooming down into the map, the download speed available in a given area is depicted by use of a coloured legend. Zooming down further to property level you can click on an individual property to gain further information. This information comprises a property code, along with the type of connection and the likely down and upload speeds. In areas where the NBN is connected by FTTN, the map displays the location of the node and the route of the connection to the residence the user clicked on. This option does not appear to be available in Victoria yet.

After a break **Stuart Bedford** gave a presentation titled “My new \$300 Laptop: The GOOD and the BAD”. The Laptop is a Lenovo V110 151AP with the following specifications: Celeron CPU, Integrated GPU, 4GB RAM, 15.6" Screen with HD 1366x768 resolution and a 500GB SATA HDD.

Although the Lenovo cost Stuart \$340 plus \$11 freight, Stuart suggested if the preloaded Windows 10 is excluded from the price, the cost would be under \$300. Specifications for the Lenovo were not high end, but were thoroughly researched and met Stuart’s requirements for a backup laptop for his main desktop computer.

There were two features that let the Lenovo down. Firstly the stereo speakers were located underneath so the sound was muffled. Stuart believes headphones or Bluetooth speakers will solve that problem. The second weak area was the slow mechanical SATA hard drive. Stuart solved the latter by replacing the SATA drive with a smaller capacity SSD from the faulty laptop the Lenovo replaces. The remainder of Stuart’s presentation detailed how he cloned the operating systems from the Lenovo and another computer that had a smaller capacity drive. He then moved the SATA drive to that other computer and the SSD from his old faulty laptop to the Lenovo. Stuart described in detail how he opened the Lenovo to remove and replace the existing SATA drive. It was obvious from the technique described that it was not a task that Lenovo expected many to undertake.

In conclusion.

Pros: The Lenovo was an inexpensive full-sized laptop with a good display and adequate performance for its intended use. It streams HD videos from YouTube well and plays HD video files without stuttering. It also has the ability of expanding the RAM if needed.

Cons: The mechanical hard drive was slow and speakers underneath the laptop could be better.
Overall Stuart is very pleased with his purchase of the Lenovo V110 151AP.

Northern Suburbs Linux SIG

November Meeting Report by Paul Addis

There was no Linux News video at this meeting because Nick Vespo was unable to attend. So the meeting started with the Open Forum session.

The first comment was about the latest version of the Firefox browser.

It is now styled “Firefox Quantum”. There is good news in that it is now faster to load and render web pages.

Then there was a brief discussion on the changes to the Melb PC web site and the membership system. All members are invited to use the new web site to check it out for themselves. The updated membership system will allow members to change information about themselves (but not about others) and avoid the previous change process, as well as providing

improved information. The committee members have been hard at work getting things “shipshape”, and have often been seen putting in long hours in the office.

The various Linux magazines in paper form are becoming less easy to find in local newsagents, and all are rather expensive; almost \$20 in most cases. Some members of the group are subscribing to the electronic versions of their favourite magazines; that is more reliable, less expensive and delivers each edition more or less as soon as it is published, avoiding the shipping delays, which can be weeks or months.

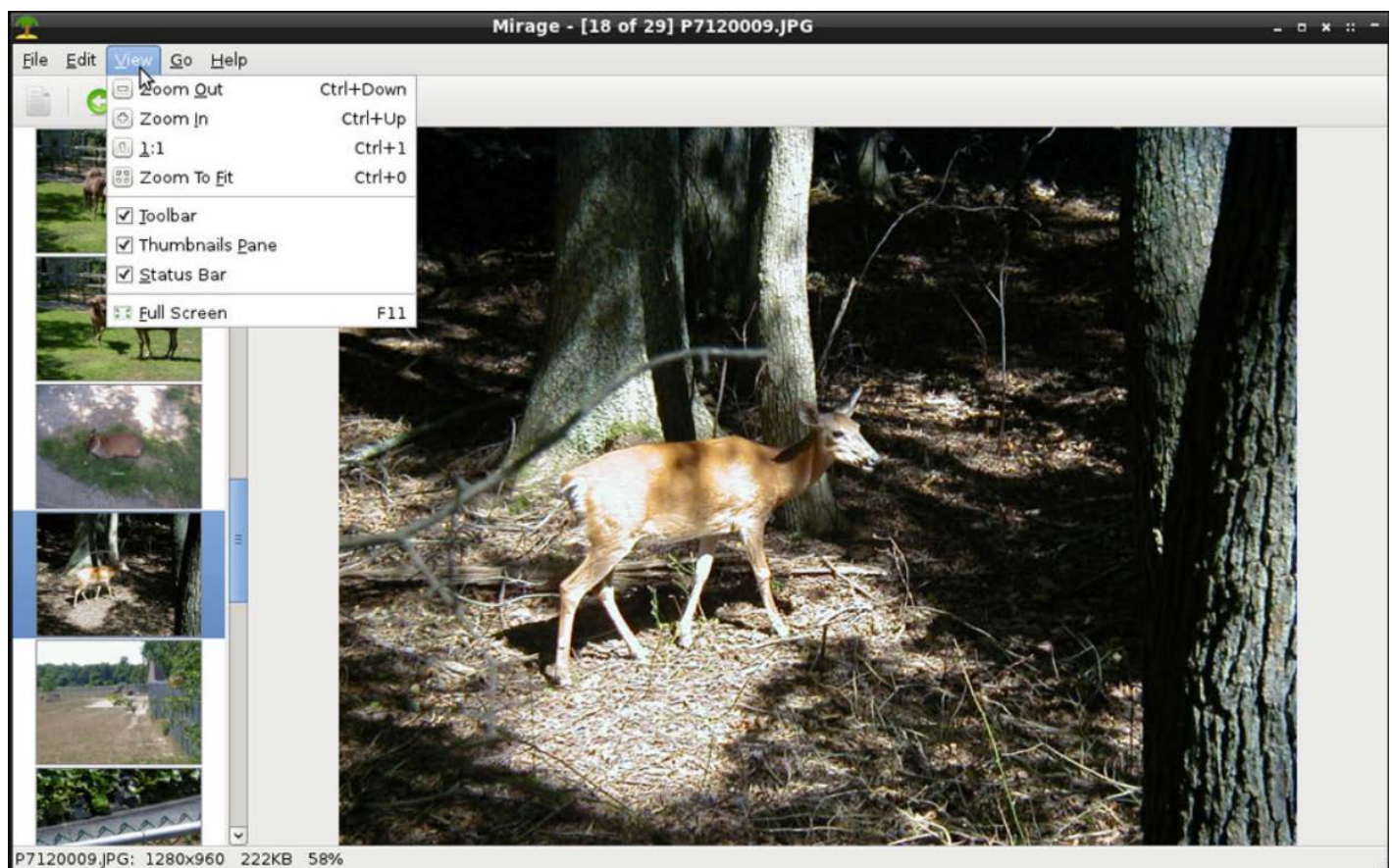
Some comments were made about Linux file compare utilities. The best utilities highlight the differences within a line, rather than just highlighting the lines that are different. Some of these utilities have been ported to Windows, and are among the large number of Linux/Unix utility programs that have been ported.

The evening progressed to the main presentation without an intervening social break. David Hatton presented another in his ongoing series of Random Bytes sessions. There were two programs examined in the session.

The first was “Mirage” - an image viewing and manipulation program.

It is simple to use, and supports some of the most commonly used functions, such as rotating, zooming, flipping, resizing and cropping. Many of the common image formats, such as: png, jpg, svg, xpm, gif, bmp and tiff are supported.

The screen shows two panes, with the left-hand pane containing thumb-nails of a set of images, and the other pane filled with the selected image.



Mirage program screen showing the two panes

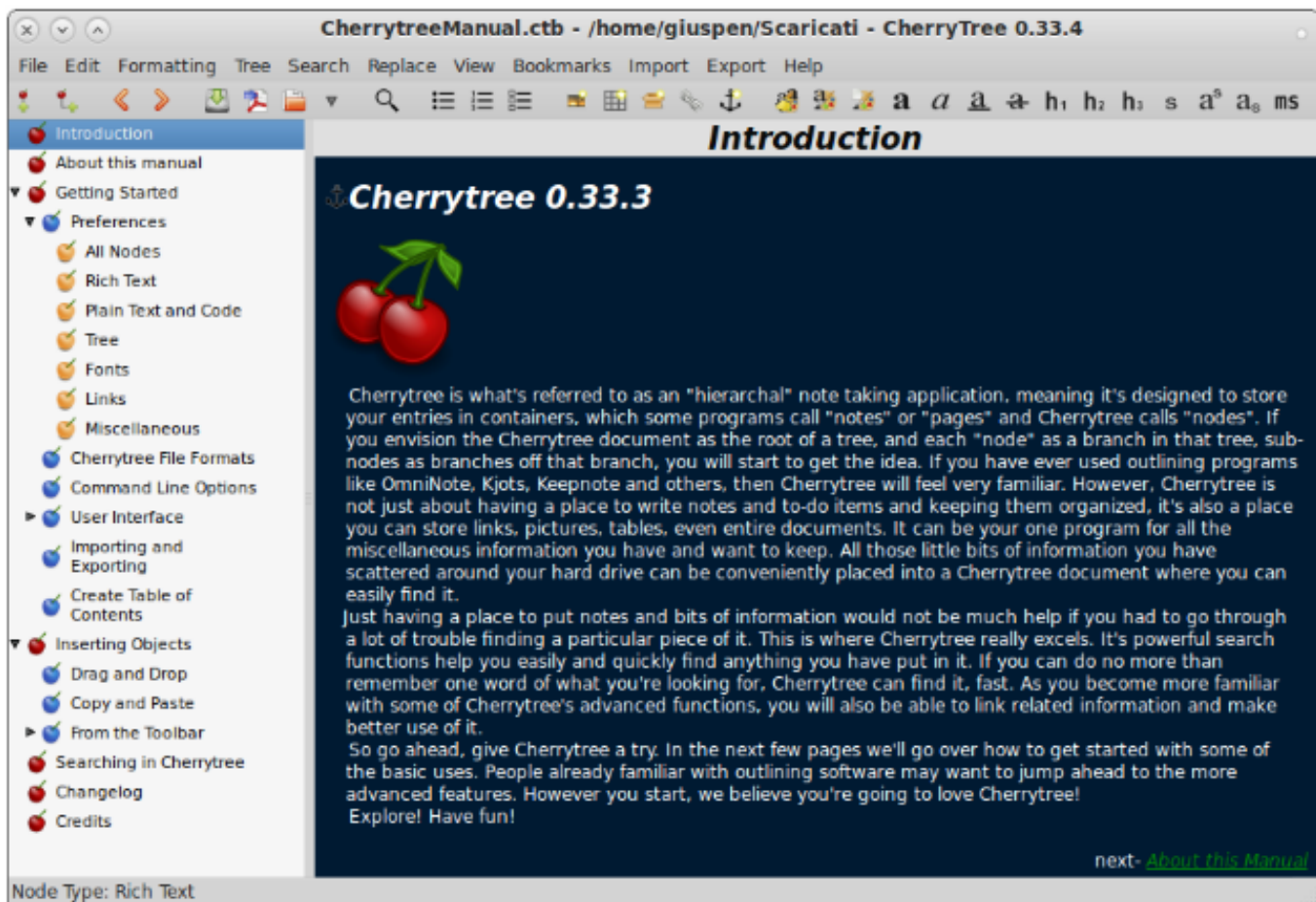
David showed some of the functions, including cropping and rotating an image, then saving the result after the changes.

Mirage is an image viewer. It is not intended to make radical alterations or graphical touch-ups to your images. For that, you can use the Edit/Custom Actions option to quickly open an image in the GIMP image editing application. This is a very handy tie-in. Once you have the GIMP app installed, it is a seamless switching from the Mirage viewer to the full-fledged GIMP editing tools.

All-in-all a very useful lightweight image viewer with simple image change functions included.

The second program demonstrated is called "Cherrytree".

Cherrytree is a Wiki-like hierarchical note taking application that lets you organize all your notes, bookmarks, source code and other personal information in a database. The application is a personal (desktop) wiki system that saves all your data into an XML file or an SQLite Database, and it supports a large range of source code syntax highlighting (ASP, C, Java, JavaScript, LaTeX, Pascal, Perl, PHP, etc.), paragraph formatting and alignment, and insertion and management of images, tables, lists and codeboxes.



Cherrytree Opening Screen

The software also lets users define hyperlinks (these can be linked to Web pages, to nodes or to files), print and export nodes to PDF format, organize the structure of nodes, search them using regular expressions, replace text strings in notes or in the names of nodes, and import data from Notecase, Tuxcards, Basket and Keepnote notebooks.

The base unit is a node, and the nodes are stored as a hierarchy. When a node is added, the right hand pane of the two pane window allows the user to type in notes, link to files or web pages (hyperlink). A link to a file will start the program associated with that file type, e.g. Open Office.

The user can control the formatting of the note, including the font type and size. A number of file types can be imported, including program source code in the languages mentioned above, and the code will be syntax highlighted. The program will be dropped into a window set aside for it. The menus provide a large number of options for formatting, file import and export, editing and node/tree management.

The program is quick in operation and uses only a modest amount of system resources. A nice-to-have Linux utility.

The evening finished with an extended social/refreshment break to celebrate the last meeting of the year for the group. Our next meeting will be in January 2018.

Best wishes to all for a Merry (but not too merry) Christmas and a Very Happy New Year.

Everything Apple

Everything Apple SIG is **changing its meeting date.**

Commencing Feb-2018:

- We meet 2pm – 4pm on the ***third Tuesday of the month.***
- No meetings in January or December.
- Next Meeting: **Tuesday**, 20-Feb-2018 at 2pm.

Everything Apple SIG is a joint venture between Melb PC and Apple Users Society of Melbourne (AUSOM).

The emphasis will be on Apple Devices (iPad, iPhone, iPod, and Apple TV) and helping PC users understand the Mac environment. We welcome newcomers to Apple or computers, Apple experts, and everyone in between.

Join us for **anything** you want to know about Apple products. Will you have tried to macOS High Sierra?

Location: Melbourne PC Headquarters, Level 1, 479 Warrigal Road, Moorabbin

<https://www.melbpc.org.au/index.php/contact-us/>

Email to: everything-apple@melbpc.org.au or everything-apple@ausom.net.au

Special Interest Groups

SIG Meetings & Contact Details

Special Interest Groups

Data Source: data-source for SIG-List

Updated: 29-Nov-2017 - 16:35

Amendments: Please advise changes/corrections to:
[calendar-admin@melbpc.org.au/](mailto:calendar-admin@melbpc.org.au)

Recent changes are at:

<http://www.melbpc.org.au/interest-groups-resources/sig-changes/>

Access (database) and Excel

Date Jan	No Meeting
Feb-Nov	Second Mon of month (inc. Public Holidays)
Dec	Second Mon of month
Time	6:30pm - 8:30pm
Email	access@melbpc.org.au
Location	Melb PC HQ, Level 1, 479 Warrigal Rd, Moorabbin Melway:78.D8
Convenor(s)	Craig Evans craig_evans@racv.com.au

Bayside

Date Jan	Third Thu of month
Feb-Nov	Third Thu of month
Dec	Third Thu of month
Time	10am - 12noon
Email	bayside@melbpc.org.au
Location	St Stephens Church Hall, 111 North Road (cnr Cochrane St), Brighton Melway:67.F7
Convenor(s)	Peter Carpenter - 9596 3441 Brian Fergie Les Johnston

Beginners East (BEAST)

Date Jan	No Meeting
Feb-Nov	Third Sun of month
Dec	Second Sun of month
Time	10am - 12:30pm
Email	beast@melbpc.org.au
Location	Vermont South Community Centre, 1 Karobran Drive, Vermont South Melway:62.G7
Convenor(s)	Dave Botherway

Casey - Main Meeting

Date Jan	No Meeting
Feb-Nov	Second Fri of month
Dec	Second Fri of month. (Christmas function - check location/time etc with Convener)
Time	1pm - 3:30pm
Location	Beaconsfield Neighbourhood Centre, 8 O'Neil Road, Beaconsfield Melway:214.A1
Convenor(s)	Jan Whitaker - 9705 9009 jwhit@janwhitaker.com Jan Weiner - 9796 2807 weijan@westnet.com.au

Casey - Workshop

Date Jan	No Meeting
Feb-Nov	Fourth Fri of month
Dec	No Meeting
Time	1pm - 3:30pm
Location	Beaconsfield Neighbourhood Centre, 8 O'Neil Road, Beaconsfield Melway:214.A1
Convenor(s)	Jan Weiner - 9796 2807 weijan@westnet.com.au Jan Whitaker - 9705 9009 jwhit@janwhitaker.com

Communications

Date Jan	No Meeting
Feb-Nov	Second Wed of month
Dec	Second Wed of month
Time	7 - 9:30pm
Email	phil@melbpc.org.au
Location	Melb PC HQ, Level 1, 479 Warrigal Rd, Moorabbin Melway:78.D8
Convenor(s)	Phil Lew - 0418 567 019

Digital Images

Date Jan	Third Fri of month
Feb-Nov	Third Fri of month
Dec	No Meeting
Time	10am - 12noon
Location	Wadham House, 52 Wadham Parade, Mount Waverley Melway:61.E12
Convenor(s)	Ian Bock - 9807 3701 bockey@melbpc.org.au George Skarbek

East

Date Jan	No Meeting
Feb-Nov	Second Thu of month
Dec	Second Thu of month (starts 6:30pm)
Time	7:30pm - 9:30pm
Email	east@melbpc.org.au
Location	Eley Park Community Centre, 87 Eley Rd, Blackburn South Melway:61.H5
Convenor(s)	Paul Woolard - 9877 1059 Ian Dewhurst - 0438 480 500

East Workshop & 3D Printing

Date Jan	No Meeting
Feb-Nov	Second Sun of month. NO meeting in May - Mother's Day.
Dec	Second Sun of month
Time	10am - 2pm
Email	eastwsh@melbpc.org.au
Location	Wadham House, 52 Wadham Parade, Mount Waverley Melway:61.E12
Convenor(s)	Paul Woolard - 0417 566 209 pwoolard@melbpc.org.au John Swale (3D printing) - 0417 530 766

Essendon - Main meeting

Date Jan	No Meeting
Feb-Nov	First Fri of month
Dec	No Meeting
Time	9:30am - 12noon
Email	essendon@melbpc.org.au
Location	Nancye Kirchner Neighbourhood Centre, Doyle Street (corner Somerset St), Avondale Heights Melway:27.D6
Convenor(s)	John Guegan - 9317 7114

Essendon - Open Forum

Date Jan	No Meeting
Feb-Nov	Second Fri of month
Dec	Second Fri of month. (Christmas Function, starts 10:30am)
Time	9:30am - 12noon
Email	essendon@melbpc.org.au
Location	Nancye Kirchner Neighbourhood Centre, Doyle Street (corner Somerset St), Avondale Heights Melway:27.D6
Convenor(s)	John Guegan - 9317 7114

Essendon - Various topics

Date Jan	No Meeting
Feb-Nov	Third Fri of month
Dec	No Meeting
Time	9:30am - 12noon
Email	essendon@melbpc.org.au
Location	Nancye Kirchner Neighbourhood Centre, Doyle Street (corner Somerset St), Avondale Heights Melway:27.D6
Convenor(s)	John Guegan - 9317 7114

Everything Apple

Date Jan	No Meeting
Feb-Nov	Third Tue of month
Dec	No Meeting
Time	2pm - 4pm
Email	everything-apple@melbpc.org.au
Location	Melb PC HQ, Level 1, 479 Warrigal Rd, Moorabbin Melway:78.D8
Convenor(s)	Peter Emery everything-apple@ausom.net.au Sam Fiumara

Genealogy East

Date Jan	No Meeting
Feb-Nov	Third Sun of month
Dec	Second Sun of month
Time	1pm - 3:30pm
Email	geneast@melbpc.org.au
Location	Vermont South Community Centre, 1 Karobran Drive, Vermont South Melway:62.G7
Convenor(s)	Denis Street

Hardware

Date Jan	No Meeting
Feb-Nov	Second Fri of month
Dec	Second Fri of month
Time	10am - 12noon
Location	Wadham House, 52 Wadham Parade, Mount Waverley Melway:61.E12
Convenor(s)	Kelvin Cording - 9438 1047 kcording@bigpond.net.au

iHelp

Date Jan	Approximately 6 monthly
Feb-Nov	Approximately 6 monthly
Dec	Approximately 6 monthly
Time	7pm - 9pm
Email	ihelp@melbpc.org.au

Location Melb PC HQ, Level 1, 479 Warrigal Rd,
Moorabbin Melway:78.D8
 Convenor(s) Dave Simpson

Investment Tools - WASINT

Date Jan No Meeting
Feb-Nov Second Tue of month
Dec Second Tue of month
 Time 10:30am - 12:30pm
 Email wasint@melbpc.org.au
 Location Melb PC HQ, Level 1, 479 Warrigal Rd,
Moorabbin Melway:78.D8
 Convenor(s) Richard Solly

Linux Workshop - Moorabbin

Date Jan No Meeting
Feb-Nov Second Sat of month
Dec Second Sat of month
 Time 10:30am - 1:30pm
 Email linuxworkshop@melbpc.org.au
 Location Melb PC HQ, Level 1, 479 Warrigal Rd,
Moorabbin Melway:78.D8
 Convenor(s) David Hatton

MACE (Atari Computers)

Date Jan Third Sun - BBQ - check with
Convenor for location
Feb-Nov Third Sun of month
Dec Third Sun of month
 Time 10am - 2pm
 Email maceatari@gmail.com
 Location Melb PC HQ, Level 1, 479 Warrigal Rd,
Moorabbin Melway:78.D8
 Convenor(s) Andrew Boschan
andrewbosch@gmail.com

Microcontroller

Date Jan Second Wed of month
Feb-Nov Second Wed of month
Dec Second Wed of month
 Time 7pm - 9:30pm
 Email microcontroller@melbpc.org.au
 Location Melb PC HQ, Level 1, 479 Warrigal Rd,
Moorabbin Melway:78.D8
 Convenor(s) David Stonier-Gibson
 John Hollow - 0417 031 164
 Phil Lew - 0418 567 019

Microcontroller Workshop

Date Jan Second & Fourth Sat of Jan.
Feb-Nov Second & Fourth Sat of month.

Dec Second Sat (only) of Dec.
 Time 12noon - 5pm
 Email microcontroller-workshop@melbpc.org.au
 Location Melb PC HQ, Level 1, 479 Warrigal Rd,
Moorabbin Melway:78.D8
 Convenor(s) John Shirt - 0409 568 267
 Rob Brown - 0419 285 806

Mornington Peninsula - General, Q&A

Date Jan Third Mon of month
Feb-Nov Third Mon of month
Dec No Meeting
 Time 9:30am - 12noon
 Email peninsula@melbpc.org.au
 Location Mornington Community Information and
 Support Centre, 320 Main St,
Mornington Melway:104.E12
 Convenor(s) Terry Said - 0427 750 327
dulnain@gmail.com
 Ian Thomson
iaroth@netspace.net.au
 Colin Ackehurst

Mornington Peninsula - Family History

Date Jan Third Mon of month
Feb-Nov Third Mon of month
Dec No Meeting
 Time 1:30pm - 4:30pm
 Email peninsula@melbpc.org.au
 Location Mornington Community Information and
 Support Centre, 320 Main St,
Mornington Melway:104.E12
 Convenor(s) Colin Ackehurst
colin_a_ackehurst@bigpond.com

Mornington Pen. Family History: Adv.DNA

Date Jan last Wed of month (5th Wed if there
is one, otherwise 4th Wed)
Feb-Nov last Wed of month (5th Wed if there
is one, otherwise 4th Wed)
Dec No Meeting
 Time 2pm - 4pm
 Email peninsula@melbpc.org.au
 Location Mornington Community Information and
 Support Centre, 320 Main St,
Mornington Melway:104.E12
 Convenor(s) Colin Ackehurst
colin_a_ackehurst@bigpond.com

Multimedia Home Entertainment

Date Jan	No Meeting
Feb-Nov	First Fri of month
Dec	First Fri of month
Time	10am - 12noon
Email	MHE@melbpc.org.au
Location	Wadham House, 52 Wadham Parade, Mount Waverley Melway:61.E12
Convenor(s)	John Hall - 9803 2731 johnhall@melbpc.org.au Kelvin Cording - 9438 1047 kcording@bigpond.net.au

Music

Date Jan	Third Thu of month
Feb-Nov	Third Thu of month
Dec	No Meeting
Time	7:30pm - 9:30pm
Email	music@melbpc.org.au
Location	Melb PC HQ, Level 1, 479 Warrigal Rd, Moorabbin Melway:78.D8
Convenor(s)	Bill Sakell John Shirt - 0409 568 267

North East Android

Date Jan	No Meeting
Feb-Nov	Third Wed of month
Dec	Second Wed of Dec - join with North East Daytime SIG - end-of-year breakup
Time	10am - 12noon
Email	ne-android@melbpc.org.au
Location	Hawdon Street Community Hall, 80 Hawdon Street, Heidelberg Melway:32.A4
Convenor(s)	Colin Lampshire 9857 5372 or 0413 640 408 lampshir@melbpc.org.au Kelvin Cording - 9438 1047

North East Daytime and Photography

Date Jan	No Meeting
Feb-Dec	Second Wed of month
Time	10am - 12noon
Email	neday@melbpc.org.au
Location	Hawdon Street Community Hall, 80 Hawdon Street, Heidelberg Melway:32.A4
Convenor(s)	Colin Lampshire 9857 5372 or 0413 640 408 lampshir@melbpc.org.au

North East Genealogy

Date Jan	No Meeting
Feb-Nov	First Wed of month
Dec	First Wed of month
Time	10am - 12noon
Email	negen@melbpc.org.au
Location	Hawdon Street Community Hall, 80 Hawdon Street, Heidelberg Melway:32.A4
Convenor(s)	Lynn. Hammet lynnhammet@gmail.com

Northern Suburbs Linux

Date Jan	Third Mon of month
Feb-Nov	Third Mon of month
Dec	No Meeting
Time	7:30pm - 9:30pm
Email	nsliq@melbpc.org.au
Location	Community Meeting Room, Watsonia Library, 4 Ibbotson St, Watsonia Melway:20.E4
Convenor(s)	David Hatton Stephen Davidson

Online

Date Jan	Available online at any time
Feb-Nov	Available online at any time
Dec	Available online at any time
Time	Available online at any time
Email	kazkev@melbpc.org.au
Location	Melb PC Yammer online forum
Convenor(s)	Kevin Martin Evening only - 5964 7627 or 0407 343 162

Programming

Date Jan	Suspended, meet only on request.
Feb-Nov	Suspended, meet only on request.
Dec	Suspended, meet only on request.
Time	By arrangement
Email	programming@melbpc.org.au
Location	Melb PC HQ, Level 1, 479 Warrigal Rd, Moorabbin Melway:78.D8
Convenor(s)	John Viney

Raspberry Pi - Moorabbin

Date Jan	Second Sat of month
Feb-Nov	Second Sat of month
Dec	Second Sat of month
Time	2pm - 4pm

Email raspi-moorabbin@melbpc.org.au
 Location Melb PC HQ, Level 1, 479 Warrigal Rd,
Moorabbin Melway:78.D8
 Convenor(s) Mohan Gupta - 0421-214-081
 Rob Brown - 0419 285 806

Raspberry Pi - Mt Waverley

Date Jan No meeting Jan-2018 - Australia Day
Feb-Nov Fourth Fri of month
Dec No Meeting
 Time 10am - 12noon
 Email raspi@melbpc.org.au
 Location Wadham House, 52 Wadham Parade,
Mount Waverley Melway:61.E12
 Convenor(s) John Hall - 9803 2731
johnhall@melbpc.org.au
 Lance Lloyd - 9884 5559
lancelloyd@melbpc.org.au

Sunbury Daytime - New Users

Date Jan No Meeting
Feb-Nov First Thu of month
Dec First Thu of month
 Time 9:30am - 12noon
 Email sunburydaytime@gmail.com
 Location Sunbury Senior Citizens Centre (back
 room), 8 O'Shannassy Street,
Sunbury Melway:382.E4
 Convenor(s) Kevin Hale - 9740 5786

Sunbury Daytime - Advanced

Date Jan No Meeting
Feb-Nov Second Thu of month
Dec Second Thu of month
 Time 9:30am - 12noon
 Email sunburydaytime@gmail.com
 Location Sunbury Senior Citizens Centre (back
 room), 8 O'Shannassy Street,
Sunbury Melway:382.E4
 Convenor(s) Kevin Hale - 9740 5786

Sunbury Daytime - Main Meeting

Date Jan No Meeting
Feb-Nov Third Thu of month
Dec No Meeting
 Time 9:30am - 12noon
 Email sunburydaytime@gmail.com
 Location Sunbury Senior Citizens Centre (back
 room), 8 O'Shannassy Street,
Sunbury Melway:382.E4
 Convenor(s) Kevin Hale - 9740 5786

Sunbury Daytime - Maintenance & Linux

Date Jan No Meeting
Feb-Nov Fourth Thu and Fifth Thu of month.
Dec No Meeting
 Time 9:30am - 12noon
 Email sunburydaytime@gmail.com
 Location Sunbury Senior Citizens Centre (back
 room), 8 O'Shannassy Street,
Sunbury Melway:382.E4
 Con
 venor(s) Kevin Hale - 9740 5786

Video Inner East

Date Jan No Meeting
Feb-Nov Second Mon in month, except NO
 meetings in Mar & Jun; and meeting
 moved to third Mon in July, namely
 15-Jul-2018.
Dec Second Mon of month
 Time 7:30pm - 9:30pm
 Email rbalse@tpg.com.au
 Location Copland Room, Ashburton Library, 154
 High St,
Ashburton Melway:60.C9
 Convenor(s) Richard Balsillie - 9809 4116

Video Production - Pinnacle

Date Jan No Meeting
Feb-Nov Fourth Wed of month
Dec No Meeting
 Time 10:00am - 12:30pm
 Location Melb PC HQ, Level 1, 479 Warrigal Rd,
Moorabbin Melway:78.D8
 Convenor(s) Wayne Spicer - (03) 5971 1617
spisawn@optusnet.com.au
 Tony Pickup - 9878 0706
tonypickup@optusnet.com.au

Video Production - Sony

Date Jan Second Wed of month
Feb-Nov Second Wed of month
Dec Second Wed of month
 Time 10am - 12noon
 Location Melb PC HQ, Level 1, 479 Warrigal Rd,
Moorabbin Melway:78.D8
 Convenor(s) Roger Wragg
rdwragg@fastmail.fm
 Bob Flack

WAFFLE - wine & fine food lovers event

Date Jan	No Meeting
Feb-Nov	First Wed of month
Dec	First Wed of month
Time	9:35pm (after the Monthly Meeting)
Email	phil@melbpc.org.au
Location	Fong's Chinese Restaurant, 725 Centre Rd (cnr Francesco St), Bentleigh East Melway:77.J1
Convenor(s)	Phil Lew - 0418 567 019 Tom Rado - 9807 4072

Wyndham PC Users/Multimedia

Date Jan	No Meeting
Feb-Nov	Third Tue of month
Dec	Second Mon of Dec for break-up party.
Time	7:30pm - 9:30pm
Location	Room 3, Central Park Community Centre, 80 Lonsdale Circuit (off Franklin Blvd), Hoppers Crossing Melway:206.J1
Convenor(s)	John Healey jpfh@melbpc.org.au Brian Hallam - 0407 493 454 b_hallam@yahoo.com

Website Design - Tutorials

Date Jan	No Meeting
Feb-Nov	Fourth Sun of month
Dec	No Meeting
Time	2pm - 4pm
Email	webdesign@melbpc.org.au
Location	Melb PC HQ, Level 1, 479 Warrigal Rd, Moorabbin Melway:78.D8
Convenor(s)	Fleur Stephens - 0407 330 963

Yarra Ranges

Date Jan	No Meeting
Feb-Nov	Fourth Tue of month
Dec	Third Tue of month
Time	9:15am - 12:30pm
Email	yrig@melbpc.org.au
Location	Japara Living and Learning Centre, 54-58 Durham Rd, Kilsyth Melway:51.J5
Convenor(s)	Bryan Paten - 0429 430 640 Shane Mason - 9733 5390

Website Design - Troubleshooting

Date Jan	No Meeting
Feb-Nov	Fourth Sun of month
Dec	No Meeting
Time	4pm - 6pm
Email	webdesign@melbpc.org.au
Location	Melb PC HQ, Level 1, 479 Warrigal Rd, Moorabbin Melway:78.D8
Convenor(s)	Fleur Stephens - 0407 330 963

Windows Plus

Date Jan	No Meeting
Feb-Nov	Third Sat of month
Dec	No Meeting
Time	10am - 12noon
Email	winplus@melbpc.org.au
Location	Melb PC HQ, Level 1, 479 Warrigal Rd, Moorabbin Melway:78.D8
Convenor(s)	John Swale - 0417 530 766 Barry Stone



Membership Drive

**Introduce a new member*
to Melbourne PC User Group and receive credit
towards your membership fees.**

Did you know that Melb PC held its first meeting in November 1983?

Yes! it's true.

The group flourished and in 1993 started its own Internet service, becoming one of the founding suppliers of the Internet in Australia, and it is still a licensed ISP. Melb PC is Australia's largest and most active personal computer/technology group with thousands of members participating in more than 40 Special Interest Groups (SIGs) that meet regularly throughout Melbourne.

New members will receive all the benefits you already enjoy – the digital newsletter, the help lines, the Special Interest Groups (SIGs), the Monthly meetings and access to mobile broadband, personal email or IP4 Rental/Web Hosting/Private email Hosting, Microsoft OS discounts and you will be helping your club to grow.

You know how much you enjoy being part of Melbourne PC User Group. So why not bring along a friend to enjoy it too? Prospective new members are always warmly welcome at the Monthly Meeting and SIG Meetings.

Each new member* you enrol gives you **three months credit** towards your membership renewal (approx. \$24.00 value against a full membership). The more new members you enrol, the more credit towards your next membership renewal.

(* This does not include Family members or anyone re-joining within 12 months of leaving Melb PC).

INVITATION

Interested in Computers and Technology?

You are invited to attend the Monthly Meeting of

Melbourne PC User Group

7pm, first Wednesday of each Month

Unit 26, 479 Warrigal Road, Moorabbin (Melways 78 C8)

PROGRAM

- **Q&A**—your puzzling computer questions answered
- **President's Report**—The latest update on club news
- **Presentations**—one or two relevant presentations by Guest speakers on technology news.





MELBOURNE PC USER GROUP INC.

MEMBERSHIP APPLICATION FORM

Title	First Name	Last Name	
Business Name			
Address			
Suburb		Post Code	
Phone		Mobile Number	
DOB	Preferred Email Address		
SUMMARY		Additional Family Members or Corporate Representatives (Maximum 2 names)	
Individuals	\$95 <input type="checkbox"/>	Title	First Name
Additional Family Members (Spouse and children)	\$25 <input type="checkbox"/>		Last Name
Pensioners/Adult students A (25+)*	\$80 <input type="checkbox"/>		Phone
Students B (14-25 yrs.)	\$35 <input type="checkbox"/>	Title	First Name
Corporate	\$190 <input type="checkbox"/>		Last Name
(One membership is two representatives)			Phone
TOTAL: \$ <input type="text"/>		Please provide emergency contact details below.	
		Full Name	
		Phone no.	

Referred by member: _____ full name or membership number /SIG_____

Terms and conditions

- Adult students A must attach a photocopy of their student card or letter from their educational institution confirming full student status.
- All student B members must have a Student Card and have evidence of their age at time of joining.
- Pensioners must attach a photocopy showing both sides of their Centrelink Pension Concession Card. Change of family member(s) must be identified in writing to the club secretary.

I hereby apply for membership of Melbourne PC Users Group Inc. (A000329V) and agree to abide by its rules while I remain a member.

Signature _____ Date ____/____/____

Payment Details

Name on Card	Expiry Date
Credit Card Number	
Signature	Date ____/____/____

Email User Name Selection

List the user ("login") names you would like in order of preference. Write very clearly, to avoid our confusing certain letters. User names are expressed in lower case letters and must represent your real name in some recognisable way e.g. "John J. Jones" might request user names such as "john", "johnj", "jjones", etc. Any user name that is already allocated or deemed unsuitable in the opinion of the system administrators will not be allocated.

Choice 1. _____@melbpc.org.au

Choice 2. _____@melbpc.org.au



MELBOURNE PC USER GROUP INC.

ABN 43 196 519 351

(Victorian Association Registration No. A0003293V)

Unit 26, 479 Warrigal Road, Moorabbin Vic 3189 Australia

"Members helping Members" Telephone: (03) 9276 4000

14-Dec-2015

OFFICE 365 PRO PLUS 1 Year Subscription



Word



Excel



PowerPoint



OneNote



Access



Publisher



Outlook

Microsoft Office 365 ProPlus for MelbPC Members

Subscriptions for Microsoft's desktop program suite Office 365 ProPlus are now available to Melbpc members at a reduced rate.

The programs included are; Word, Excel, OneNote, PowerPoint, Outlook, Publisher and Access. Members who take up this offer will be able to install the suite on up to fifteen different devices: 5 computers (PC or Mac), 5 tablets (iOS/Android/Windows) and 5 smartphones (iOS, Android, Windows). The new 2016 versions are available now.

Microsoft Office ProPlus is available to members for an annual subscription, set for the first year and payable by members in advance. (*) **Renewal for each year will reflect Microsoft's current price at the time of renewal.**

After payment members will be able to download the program suite onto their own computers using their Office 365 login details (the same as they already use for email and other cloud services). As long as the subscription is maintained, members will receive updates and upgrades to the latest version of Office.

Our existing Office 365 Enterprise service provides the 'cloud' versions of some Office applications: Word, Excel, PowerPoint and OneNote. These can be used during a login to Office 365 via the web. They do not include all of the features available on the desktop versions. Office 365 ProPlus provides the full versions of those applications, and others not available at in the cloud at all: Outlook, Publisher and Access. (Publisher and Access are not available in the Mac OS X version.) The ProPlus programs can be used when the computer is offline and not connected to the internet, as they are installed directly on the computer (or tablet/ smartphone).



Skype for
Business



InfoPath



OneDrive
for Business

December Calendar

<div>  <div>V1 – updated 29-Nov-2017</div> <h2>SIG & Other Meetings — Dec-2017</h2> </div>						
Sun	Mon	Tue	Wed	Thu	Fri	Sat
Legend SIG meeting at Melb PC HQ, Moorabbin. Non-Moorabbin meeting. Cancelled Meeting Changed Meeting To be confirmed	Changes Please advise changes to: calendar-admin@melbpc.org.au		Other SIG (Special Interest Group) information: http://www.melbpc.org.au/interest-groups/ Recent Changes: http://www.melbpc.org.au/interest-groups-resources/sig-changes/	Have A Question Post it on Yammer Yammer: http://yammer.com/melbpc.org.au/	1 Essendon SIG <i>Main meeting</i> <i>Avondale Heights</i> 9:30am - 12noon Multimedia Home Entertainment SIG <i>Mount Waverley</i> 10am - 12noon	2
3	4	5	6 North East Genealogy SIG <i>Heidelberg</i> 10am - 12noon MONTHLY MEETING <i>Melb PC HQ, Moorabbin</i> 7pm - 9:30pm then Supper (WAFFLE) at Fong's 9:35pm	7 Sunbury Daytime SIG <i>New Users</i> 9:30am - 12noon	8 Essendon SIG <i>Open-Forum</i> <i>Avondale Heights</i> 9:30am - 12noon Hardware SIG <i>Mount Waverley</i> 10am - 12noon Casey SIG <i>Xmas Function – bookings & details from Convener</i>	9 Linux Workshop – Moorabbin SIG 10:30am - 1:30pm Microcontroller Workshop SIG <i>Moorabbin</i> 12noon - 5pm Raspberry Pi – Moorabbin SIG 2pm - 4pm
10 East Workshop & 3D Printing SIG <i>Mount Waverley</i> 10am - 2pm Beginners East (BEAST) SIG 10am - 12:30pm Genealogy East SIG <i>Vermont South</i> 1pm - 3:30pm	11 Access (database) and Excel SIG <i>Moorabbin</i> 6:30pm - 8:30pm Video Inner East SIG <i>Ashburton</i> 7:30pm - 9:30pm	12 Investment Tools - WASINT SIG <i>Moorabbin</i> 10:30am - 12:30pm	13 Video Production – Sony SIG <i>Moorabbin</i> 10am - 12noon North East Daytime & Photography SIG <i>Combined Xmas funcn</i> <i>Heidelberg</i> 10am - 12noon Communications SIG <i>Moorabbin</i> 7pm - 9:30pm Microcontroller SIG <i>Xmas party</i> <i>Moorabbin</i> 7pm - 9:30pm	14 Sunbury Daytime SIG <i>Advanced</i> 9:30am - 12noon East SIG <i>Blackburn South</i> 6:30pm - 9:30pm	15 Essendon SIG <i>Xmas Function</i> <i>Avondale Heights</i> 10:30am - 12noon++ Digital Images SIG <i>Including Photoshop</i> <i>Mount Waverley</i> 10am - 12noon Melb PC Committee 1pm, Mt Waverley	16 Windows Plus SIG <i>Moorabbin</i> 10am - 12noon
17 Beginners East (BEAST) SIG <i>Moved to 10-Dec</i> MACE (Atari Computers) SIG <i>Moorabbin</i> 10am - 2pm Genealogy East SIG <i>Moved to 10-Dec</i>	18 Mornington Peninsula SIG <i>General inc Q&A</i> <i>Mornington</i> 9:30am - 12noon <i>Family History</i> <i>Mornington</i> 1:30pm - 4:30pm Northern Suburbs Linux SIG <i>Watsonia</i> 7:30pm - 9:30pm	19 Wyndham PC Users/Multimedia <i>Hoppers Crossing</i> 7:30pm - 9:30pm Yarra Ranges SIG <i>Kilsyth</i> 9:15am - 12:30pm	20 North East Android SIG <i>Heidelberg</i> Moved to 13-Dec – combine with North East Daytime & Photo	21 Sunbury Daytime SIG <i>Main Meeting</i> 9:30am - 12noon Bayside SIG <i>Brighton</i> 10am - 12noon Music SIG <i>Moorabbin</i> 7:30pm - 9:30pm	22 Raspberry Pi - Mt Waverley SIG 10am - 12noon Casey SIG <i>Workshop</i> <i>Beaconsfield</i> 1pm - 3:30pm Melb PC OFFICE closes 12-noon 22-Dec	23 Microcontroller Workshop SIG <i>Moorabbin</i> 12noon - 5pm
24 Everything Apple SIG <i>Moorabbin</i> 2pm - 4pm Website Design SIG <i>Tutorials</i> <i>Moorabbin</i> 2pm - 4pm <i>Troubleshooting</i> <i>Moorabbin</i> 4pm - 6pm	25 PUBLIC HOLIDAY	26 PUBLIC HOLIDAY Yarra Ranges SIG <i>Moved to 19-Dec</i>	27 Video Production – Pinnacle SIG <i>Moorabbin</i> 10:00am - 12:30pm Mornington Peninsula SIG <i>Family History – Advanced DNA</i> <i>Mornington</i> LAST Wed of month 2pm - 4pm	28 Sunbury Daytime SIG <i>Maintenance & Linux</i> 9:30am - 12noon	29	30
31	Have A Question Post it on Yammer					

January Calendar

<div>  <div>V1 – updated 29-Nov-2017</div> </div> <h2>SIG & Other Meetings — Jan-2018</h2>						
Sun	Mon	Tue	Wed	Thu	Fri	Sat
Legend SIG meeting at Melb PC HQ, Moorabbin. Non-Moorabbin meeting. Cancelled Meeting Changed Meeting To be confirmed	1 PUBLIC HOLIDAY	2	3 North East Genealogy SIG Heidelberg 10am–12noon MONTHLY MEETING Melb PC HQ, Moorabbin 7pm–9:30pm then Supper (WAFFLE) at Fong's 9:35pm	4 Sunbury Daytime SIG New Users 9:30am–12noon	5 Essendon SIG Main meeting Avondale Heights 9:30am–12noon Multimedia Home Entertainment SIG Mount Waverley 10am–12noon	6
7	8 Melb PC OFFICE re-opens 9:30am 8-Jan Access (database) and Excel SIG Moorabbin 6:30pm–8:30pm Video Inner-East SIG Ashburton 7:30pm–9:30pm	9 Investment Tools – WASINT SIG Moorabbin 10:30am–12:30pm	10 Video Production – Sony SIG Moorabbin 10am–12noon North East Daytime & Photography SIG Heidelberg 10am–12noon Communications SIG Moorabbin 7pm–9:30pm Microcontroller SIG Moorabbin 7pm–9:30pm	11 Sunbury Daytime SIG Advanced 9:30am–12noon East SIG Blackburn South 7:30pm–9:30pm	12 Essendon SIG Open Forum Avondale Heights 9:30am–12noon Hardware SIG Mount Waverley 10am–12noon Casey SIG Main Meeting Beaconsfield 1pm–3:30pm	13 Linux Workshop – Moorabbin SIG 10:30am–1:30pm Microcontroller Workshop SIG Moorabbin 12noon–5pm Raspberry Pi – Moorabbin SIG 2pm–4pm
14 East Workshop & 3D Printing SIG Mount Waverley 10am–2pm	15 Mornington Peninsula SIG General inc Q&A Mornington 9:30am–12noon Family History Mornington 1:30pm–4:30pm Northern Suburbs Linux SIG Watsonia 7:30pm–9:30pm	16 Wyndham PC Users/Multimedia Hoppers Crossing SIG has now ceased Everything Apple SIG Moorabbin 2pm–4pm No meeting in Jan. Next Meeting is: TUE 20-Feb	17 North East Android SIG Heidelberg 10am–12noon	18 Sunbury Daytime SIG Main Meeting 9:30am–12noon Bayside SIG Brighton 10am–12noon Music SIG Moorabbin 7:30pm–9:30pm	19 Essendon SIG Various topics: Avondale Heights 9:30am–12noon Digital Images SIG Including Photoshop Mount Waverley 10am–12noon Melb PC Committee 1pm, Mt Waverley	20 Windows Plus SIG Moorabbin 10am–12noon
21 Beginners East (BEAST) SIG 10am–12:30pm MACE (Atari Computers) SIG BBQ ? – check location & time with convener Genealogy East SIG Vermont South 1pm–3:30pm	22	23 Yarra Ranges SIG Kilsyth 9:15am–12:30pm	24 Video Production – Pinnacle SIG Moorabbin 10:00am–12:30pm Mornington Peninsula SIG See 31-Jan – LAST Wed of month	25 Sunbury Daytime SIG Maintenance & Linux 9:30am–12noon	26 PUBLIC HOLIDAY Raspberry Pi – Mt Waverley SIG Cancelled due to Public Holiday Casey SIG Workshop Beaconsfield 1pm–3:30pm PC Update – Articles Deadline	27 Microcontroller Workshop SIG Moorabbin 12noon–5pm
28 Everything Apple SIG Next Meeting is: TUE 20-Feb Website Design SIG Tutorials Moorabbin 2pm–4pm Troubleshooting Moorabbin 4pm–6pm	29	30	31 Mornington Peninsula SIG Family History – Advanced DNA Mornington. LAST Wed of month 2pm–4pm PC Update – Reports Deadline	Changes Please advise changes to: calendar: admin@melbpc.org.au	Other SIG (Special Interest Group) information: http://www.melbpc.org.au/interest-groups/ Recent Changes: http://www.melbpc.org.au/interest-groups-resources/sig-changes/	Have A Question Post it on Yammer Yammer: http://yammer.com/melbpc.org.au/