



Published by
Melbourne PC User Group Inc.
Suite 26, Level 1, 479 Warrigal Road
Moorabbin, VIC 3189

Office hours 9.30am-4.30pm (Tue-Thursday)

Phone (03) 9276 4000
Email office@melbpc.org.au
ABN: 43 196 519 351
Victorian Association Registration
A0003293V

PC Update Newsletter
Editor: George Skarbek
editorpc@melbpc.org.au

Librarians: Clemens Pratt 9802 5501
cpratt@melbpc.org.au
Choy Lai cplai@melbpc.org.au

Proof Readers:
Harry Lewis
Tim McQueen

Committee Executive

President	George Skarbek
Vice President	John Hall
Secretary	John Swale
Treasurer	Bill Ford



Melb PC User Group Inc. is a member of the Association of
Personal Computer User Groups

PC Update

May 2017

The Newsletter of Melbourne PC
User Group Inc.

Monthly Meeting Live Stream

Tune in here at 7.00pm on Wed 5th of May to view
the Monthly Meeting live over the Internet.

Test Transmission usually commences at around 6.30pm

<http://tv.melbpc.org.au>

Contents

Editorial	2
President's Report.....	3
Monthly Meeting	4
Now you can borrow a magazine from the library	5
Ryzen 7 vs Apple Mac Pro	5
Random Access	6
All that Glitters is not Chrome	6
Good Computer House Cleaning.....	8
Google Search Tricks	11
Wi-Fi File Transfer - Easily move pictures from phone to computer.....	12
SIG Reports.....	14
Video Inner East	14
GIMP Presentation by Dave Fuller	15
North East SIGs Major Location & Date-Time changes	16
May Calendar	28

Editorial

Volunteers are the most essential part of Melb PC as without them there would be no Melb PC. It would have folded very shortly after the start of our group.



This is the reason why the Committee has held a party for our volunteers at the end of this month. It allows us as the Committee to say thanks to the group of members for all their hard work and for keeping our group going.

Very many of these volunteers have been doing their job(s) for many years and a considerable number have been working for decades.

However, there will come a time when they may not be able to continue and if they quit we need others to step forward. If you attend a SIG please consider helping even in a small capacity to help the leaders to continue by reducing their workload. This will enable to keep your group to keep going for longer.

George Skarbek

Our Statement of Purpose

The purposes of the Association are to conduct on a non-profit basis activities to help members learn and use systems and devices using various technologies, especially computing, software, and communications technology (inc. the Internet and World Wide Web, personal computers & devices), to achieve the following outcomes;

- Advancing computer literacy;
- Advancing education and the exchange of ideas;
- Keeping members up to date on developments in computer and information technology and helping members to exchange information;
- Representing members in public debate in areas of interest including law reform proposals;
- Engaging with similar organisations; and
- Carrying out activities that benefit the Association

President's Report

President's report

After wanting statistics for analysing traffic on the Melb PC website statistics for very many years, we finally have access to Google Analytics for our website. These Analytics may not give as much information as some other analysis programs but are adequate for the majority of our needs.

There is a much fuller report on this topic starting on the web at: <http://www.melbpc.org.au/services/website-statistics> but I have put a few key points below. This data is based on the period 1st of March to the 1st of April 2017.

- In that period there were 18,000 page views but very few hits on our website come from search engines and then most visitors leave immediately because they have not found what they are looking for.
- A large majority (nearly 70%) of the hits to our main page come directly from a bookmark or similar, 12% from Google, 11% referred from another Melb PC page, 1% from Bing, 1% from Yammer.
- Many members seldom visit the Melb PC pages.
- About 3% of our membership read PC Update.
- About 2% of our membership visit the Members area.
- About 8% of all the visits to any web page on our **site are** from a mobile phone but most arrive there by accident when searching for something else and leave immediately. The iPhone users have the shortest stay.
- Unfortunately only about 0.1% of our members visit the library page. In March there were only three visits to that page. I hope that it was three different members and not the librarians visiting.

These statistics will help the Committee in decisions about where the group's money should be allocated and not only to the website. We have spent almost \$700 on books this year but this level of expenditure is not likely to continue due to lack of demand from members.

The good news is that I looked at the statistics for just one day, Wednesday 5th April and 162 members clicked on the page which contains the link to the live feed of the monthly meeting. And 24 members had that page bookmarked as that was the landing page. The bad news is that many only watched a small part of it. This is from the average time spent on this page but mainly due to problems encountered during the session.

Finally, on this topic, I know that less than 2% of Melb PC members will look at my report and even less will read most of it

The Office server has finally moved to the server room in the basement. A prior Committee purchased a new server but for some inexplicable reason they said that it is safer to have it in the office under a desk and just plugged in the 240v plug. No Uninterruptable Power Supply (UPS), no air-conditioning and where the machine was in place a number of members can walk in or out. During a very short power interruption that server rebooted but failed to start correctly and as a result the office phones died.

Furthermore a few weeks earlier as some member decided to put a BIOS password on the computer in the Borrett Room and then broke the power switch showed just how unprotected the office server must have been. Sean Clarke and I moved that server to our locked server room in the basement where it is running in an air-conditioned environment and on a UPS. For some time Sean has been talking about the monumental stupidity of having a critical server asset sitting on the floor in the office. I fully agreed with his comments and we moved the server to the safe location.

Finally, some good news. There was a vacancy on the Committee and I am pleased to announce that Stewart Bedford has agreed to join. He is a long-serving member of the EAST SIG and will be a valuable member to our team.

Monthly Meeting

Wednesday 3rd - May

At 7.00 pm sharp the meeting will open with our regular Q&A Session.
Then we will hear the President's Report.

First Presentation – “ThinkUKnow”

Members of the Australian Federal Police community liaison team will explain to us what they are doing in the area of cyber safety and security.

ThinkUKnow is a free, evidence-based cyber safety program that provides accessible cyber safety education to parents, carers and teachers through schools and organisations across Australia.

ThinkUKnow uses a network of trained law enforcement members and accredited volunteers from [our program partner organisations](#) to deliver the cyber safety education presentations nationwide.

ThinkUKnow is a partnership between Microsoft Australia, Datacom and the Commonwealth Bank of Australia, and is delivered in collaboration with the New South Wales Police Force, Northern Territory Police, Queensland Police Service, South Australia Police, Tasmania Police, Western Australia Police and Neighbourhood Watch Australasia.

Second Presentation – “It's Your Money Ralf – An Opportunity To Do Better”

Graham McColough FIEAust CPEng(Ret) a professional engineer and long term member of Melb PC has become proficient at managing his self-managed superannuation fund and controlling several individual share portfolios.

He has a record of success in the share market that continued on from when he was appointed as an employee representative of a large superannuation fund.

He currently guides a share group meeting on behalf of a software company called Lincoln StockDoctor. This group has met for 7 years with a very successful share market track record

He is a long term member of the Investment Tools SIG (formerly WASINT SIG). His talk will point out the difficulties of successful investment without assistance.

Meeting will conclude at 9.30pm

After the meeting, we get together for WAFFLE@FONG. The WAFFLE SIG (“Wine And Fine Food Lovers’ Event”) will be at FONG’s Chinese Restaurant, 725 Centre Rd Bentleigh East, Corner of Francesco Street, Melway: 77: J-1

If you can't make it to Moorabbin, be sure to tune in to <http://tv.melbpc.org.au> for a live broadcast of the meeting.
Test transmission usually begins at around 6.30pm

April Raffle winners

Gerhard Stauf (46304)

Barry Stone (42103)

David King (5677)

Peter Voylay (15298)

Kerry Prendergast (46638)

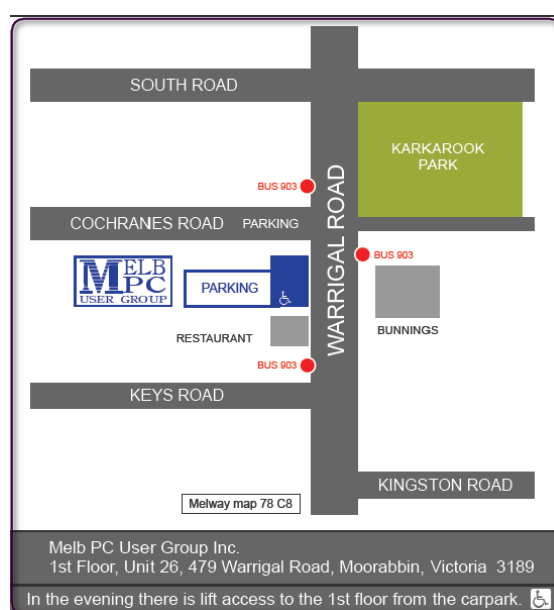
Toshiba 1 TB USB3 hard drive

JB Hi-Fi gift card

Logitech wireless keyboard and mouse

Comsol 2200mAh power bank

iPhone J.Burrows glass screen protector



Now you can borrow a magazine from the library

In recent months, several members have expressed disappointment at not being able to borrow any of the magazines that I put on display for reference in the library. This has prompted a revision of the policy, and now for a trial period the situation will be as follows:

- The most recent three copies of the magazines APC, PC & Tech Authority, and Choice Computer will remain on display “for reference only” and not available for loan.
- Older issues of these magazines will be labelled “NOW AVAILABLE FOR LOAN” on the front cover and may be borrowed for up to a month; write the details in the library register as for any other loan, and when you return any item, write the date of return in the register too.

I hope that members will appreciate this relaxation of borrowing constraints, and take advantage of the opportunity. You can rate the magazine for value/interest in the space on the front label.

Clemens Pratt: librarian, 03 9802 5501, cpratt@melbpc.org.au

Choy Lai: assistant librarian, cplai@melbpc.org.au

Ryzen 7 vs Apple Mac Pro

Very recently AMD has released a new generation of CPUs (Central Processing Units). The series 7 have eight cores but with hyper threading to the operating system this appears as having 16 CPUs.

Their price / performance ratio is the most amazing aspect. For the same performance as an equivalent Intel CPU their cost prices is less than half.

Recently there have been a number of articles about a series of tests conducted in USA comparing a \$1,500 Ryzen 7 computer against a \$5,500 Mac Pro. The tests were conducted using Photoshop CC.

Both computers have an 8 core CPU running at 3 GHz and both have a 250 GB SSD. The Mac Pro had 64 GB of RAM while the AMD computer had only 16 GB. The Mac Pro system took 15 seconds to complete the test to Ryzen's just under 9 seconds at stock speeds. Overclocking the Ryzen to a 3.5 GHz shaves just over a second off that time, completing the tests in 7.7 seconds.

The bottom line is that at one third of the cost, the Ryzen was about twice as fast.

For more details on these test go to: <http://hothardware.com/news/amd-ryzen-system-smokes-apple-mac-pro-photoshop#vrJ07pGRWvPkh581.99>

Random Access

John Swale reports on Questions and Answers from the opening session of the April monthly meeting and from members' written submissions.

Questions and Answers

Q: I have loaded about 30 GB of files from a hard drive to a USB stick. When I plugged it into one of my computers, File Explorer collapsed. When I plugged in into my wife's computer, the same thing happened. When I put it into my 10-year old Toshiba it worked fine. Have I copied something nasty from my other hard drive?

A: It is highly unlikely that you have picked up something. When you plug the USB in there is nothing running from it. You have Windows Defender running and that should pick up any problems. What I think has happened is there is a problem with the file structure or something similar on the USB. I am amazed the computer running an old system which would not have the current checking tools could read it. I think the newer operating systems may have tried to do a correction and failed. Try to run a repair from the old machine: plug the USB in, right click on the drive icon and select properties > tools > error fixing, and take the more thorough option. Otherwise you should format the USB and start again. If you can still read the data on the old XP machine, copy the data to another external device and load it onto the other machines.

Q: I have a chronic problem with Dragon 15. I spend a lot of my time dictating into Word 2010 running on Windows 10. I got Dragon in mid-August and it was OK for two months. Towards the end of December, it died. In mid-January, I contacted their Help line and they tried many installs but it always died. I have tried to install it many, many times but it always died. About a week ago I added Ready To Go and it wouldn't start. I opened a word document and about 15 minutes later Dragon 15 came to life. It worked for about 4 days and then it died. This morning I opened Word and the blue circle kept spinning and I could not do anything. I shut it down and Dragon works perfectly in my email files - Thunderbird. Any suggestions on what to do to save me reloading Windows 10?

A: There is very good free uninstaller called IObit Uninstaller. It is very thorough and it also looks in the registry for any orphaned entries. If it works in Thunderbird, then the problem may be in Word. Start to uninstall Office but chose the option to Repair instead of Uninstall. If that does not work, try uninstalling Office 2010 with IObit Uninstaller and then reinstall Office 2010.

Q: I receive some pdf documents and would like to have 3 or 4 pages copied into Word so they can be manipulated. Is there a free program to do the conversion?

A: There are free programs and usually they are online. Search for "free pdf to word conversion". Mostly the data is not too bad and usually only needs some formatting changes.

Q: I have a couple of Windows 10 machines where the response has almost died. I checked Task Manager and found that disk IO is going at 100%. It shows Microsoft Compatibility Telemetry is running. What is it?

A: I don't know what it is but I suggest you kill it, and if it is a service, set it to run manually.

All that Glitters is not Chrome

by Greg Skalka, President, Under the Computer Hood UG, CA

I love my Chromebook. It's a very handy thing to have when you want some information off the Internet quickly. I don't have a smart phone, so the Chromebook is what I go to when I want to know the locations, hours or phone number of a business, what traffic or weather conditions are like or the answer to any other search question. I keep my Acer Chromebook 11 on our kitchen table so it is available for instant use. It is small and light, yet has an 11.6" screen and a full keyboard, so I find it much more useful (and usable) than a tablet.

When I bought my Chromebook over a year ago, I thought I understood the limitations it had in needing to be connected to the Internet for most uses, and its limited storage and processing power. It has exceeded my initial expectations and I find I often use it nearly as much as my Windows 7 laptop. I love that it boots in about ten seconds, has a very long battery life and is very portable, so I find I'm taking it more and more in situations where I'd otherwise take my 14" laptop. In spite of its advantages, I do still continue to find new annoying shortcomings in the Chrome OS, and difficulties figuring out how to perform a particular task or change a setting. Though I've come up with work-arounds for some of its limitations, my Chromebook still has enough tarnish spots in its capabilities that I doubt it will ever be a complete substitute for my laptop.

I own a lot of computing devices. I probably have more than most people, though I'm sure there are some out there that have more. I admit I am hanging on to some devices that have not been used in many years (that is another story), but there are in my household almost a dozen that I myself have used at least once in the last year. Most run Windows (two laptops, three desktops and a PDA). I don't feel I'm closed-minded, though, as I do have an Android tablet, an iPad mini (iOS) and two Chrome OS devices (Chromebook and Chromebit). I've nothing against Linux, but you don't normally find it in stores on new devices, and I've not yet found a compelling reason to install it on one of my existing devices.

From this, you would probably assume (correctly) that I use Windows most of the time. You could say I was "raised" on Windows, so I tend to judge, for good or bad, all other computing user interfaces with Windows as a reference. As an electrical engineer, I spend most of my work days working on documents, spreadsheets and designs, using software running on Windows PCs, with the traditional keyboard and mouse user interface. I've grown accustomed to the features, capabilities and limitations of Windows on reasonably-powerful Intel-based computers, typically with lots of memory and storage. In spite of the (often unfortunate) changes to the Windows user interface over many years and versions, I usually find it easier to adapt to the next thing Microsoft throws at me than something coming from a seemingly completely different mindset, like iOS or Android.

I was able to figure out how to get around on the web pretty easily on the Chromebook. The OS is based heavily on the Chrome browser, which I use most of the time at work. Though I could get a Bluetooth mouse to use with my Chromebook, the touchpad has unique features that allow me to do almost everything easily. I don't notice any real difference in the Chromebook's ability to serve web pages as compared to my i5-processor-equipped Win7 laptop with IE; processing power is not a big factor in traversing the web.

A main point of contention for me in all non-Windows devices I've used is the file manager. I'm so used to the Windows File Manager that everything else seems alien. The Files app in Chrome is fairly similar, but I only recently found the way to see how much space is available on a drive (it is under "Settings" when looking at that drive). I still don't know if iOS even has a file manager; I have photos on my iPad that I have yet to figure out how to copy off.

My Chromebook uses at least half of its 16G of SSD memory for the OS and apps, and it says even the remaining memory is subject to use by the system. I bought a 128GB USB3 Flash drive to use with the Chromebook, which seems to work great. It would have been more useful if the Chromebook's SD memory slot were the type that keeps the memory card totally inside the body of the Chromebook; unfortunately, the SD card sticks out and is at risk for damage or breaking off.

In addition to saving and editing files in Google Docs on the Chromebook, Microsoft Office files can often be edited in "Office Compatibility Mode". This works even when working offline (no Internet connection), and allows me to take my Chromebook to meetings to take notes, or write newsletter articles on it while riding in the car. It appears to be compatible only with the most recent Microsoft Office file formats. I've had good luck with Word documents, and can edit PowerPoint slides, but I had issues the one time I tried editing an Excel spreadsheet. If I plan on taking notes or editing files offline somewhere, I always test opening the file I'm planning to edit before I leave home.

One unnerving feature of the office compatibility mode is its lack of a "save" feature in the menu. The first time I opened a Word file to edit, I made a few test changes and then closed the document. Fortunately, the changes were present when I opened it again, but I still didn't fully trust it. I finally noticed that it saves each keystroke of change back to the file as it goes; as I would press a key to add a letter, the access light on the external USB Flash drive would flash. While

this saving method ensures you don't lose changes, it does wear out the Flash drive's solid-state memory faster in writing to the drive so many times.

Chrome OS is compatible with an extensive list of file types, including most office, media and image files. It can open .pdf files as well as handle compressed files like .zip and .rar. I did recently find out that Windows Media Video (.wmv) files cannot be opened by a Chrome OS device. I had created a photo slide show for my dad's 80th birthday, with the result being a .wmv video. While I did find one app that vaguely mentioned allowing .wmv files to be viewed, most of the search results for this problem suggested converting the video to a supported file type. In the end, I used my Win7 laptop to play the file.

Even files that are supported by Chrome can have problems if a lot of hardware horsepower is needed. I have an auto dashcam that records video in HD as .mp4 files. I can connect the dashcam through USB to my Win7 laptop, which can easily play the video files stored on its memory card. There might be a few slight glitches, but playback appears pretty smooth. If I connect the dashcam to my Chromebook, it can play the video files, but it takes a long time to process before they initially start playing, and the playback is very jerky.

The Chrome OS has its own web store, but since it does not have a large following, there are not that many offerings as compared to the Android app store. There are a couple of VPN apps, but the VPN service I subscribe to, Private Internet Access, does not appear to support the Chrome OS at this time. I was surprised to see that TeamViewer was available as a Chrome app. I've looked through the apps offered a number of times, but have yet to find one I wanted to install at the time.

Chrome OS is also not supported that well by third-party hardware vendors. The Patriot Aero external Wi-Fi hard drive I tried to demonstrate earlier this year has apps to support its use with Android and iOS devices, but they don't have one for the Chrome OS. I have some Western Digital My Passport USB3 external hard drives, which can be set up to use password protection and data encryption. My Chromebook can see and use the drives that are not protected, but cannot use a drive that has protection / encryption enabled, as the program on the drive that is used to enable and disable protection is not compatible with Chrome. The universal in Universal Serial Bus only applies if there is no additional software required.

Printing is another problem issue for Chromebooks, as printers would need drivers. I've not seen any printers that advertise supporting Chrome OS devices. Google claims printing can be done using Google Cloud Print. I've read some about it, but have not yet been able to figure it out. It is made more confusing by Google having a Chrome browser and a Chrome OS. So far, I've settled for taking my files to a Windows PC to print.

Chromebooks offer a lot of promise for speedy and simple computing, but they don't always fully deliver on everything a user might want to do. I love my Chromebook and will continue to use it, but it appears it can't do everything I need. I guess I won't be giving up my Windows computers anytime soon and will continue to use it, but it appears it can't do everything I need. I guess I won't be giving up my Windows computers anytime soon.

Good Computer House Cleaning

By Len Nasman, Editor / Webmaster, Bristol Village Computer Club, OH

As you use your computer, some things get a little messy. For example, each time you uninstall or update an application an area of memory called the registry is changed. When you install some programs, they might add a feature that keeps part of them running in the background. An example might be when you install software for a printer, a background program might be installed that keeps checking printer use and pops up a reminder to order supplies. If you get too many unnecessary things like this running in the background, it will slow down your computer.

Also, whenever you visit websites, they make copies of things and store them in so-called temporary files. The files are called temporary, but they remain there until you remove them.

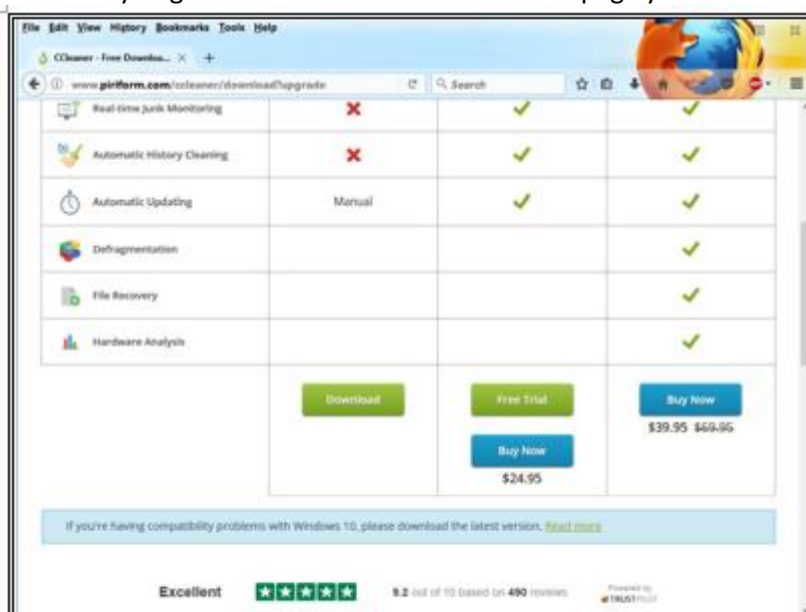
For example; Internet Explorer saves things in a number of categories. BTW, if you have more than one user that can login to your computer, these files are saved separately for each different user. Each web browser program (Internet Explorer, Chrome, and Firefox) maintains a similar list of files.

In any case, it is a good idea from time to time to clean up the registry, stop unnecessary background programs, and remove temporary files. A useful free program to keep your computer tidy is CCleaner. This program has options for taking care of the issues mentioned earlier.

If you have already installed CCleaner, jump to the update section.

Installing CCleaner

When you go to the CCleaner download web page you will see three different versions offered.



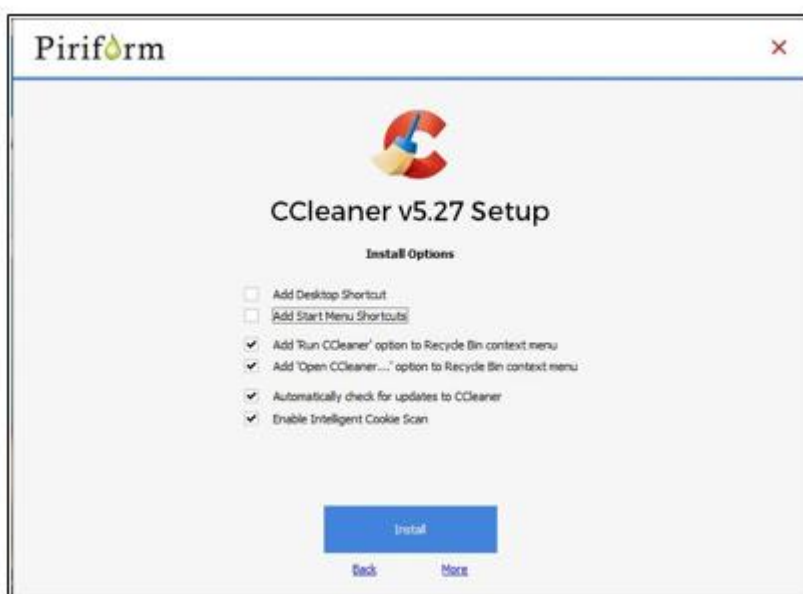
CCleaner download note: Scroll down for downloading the free version

<https://www.piriform.com/CCleaner/download>

After you select the Download option, a dialog box will pop up that lets you save the install file.

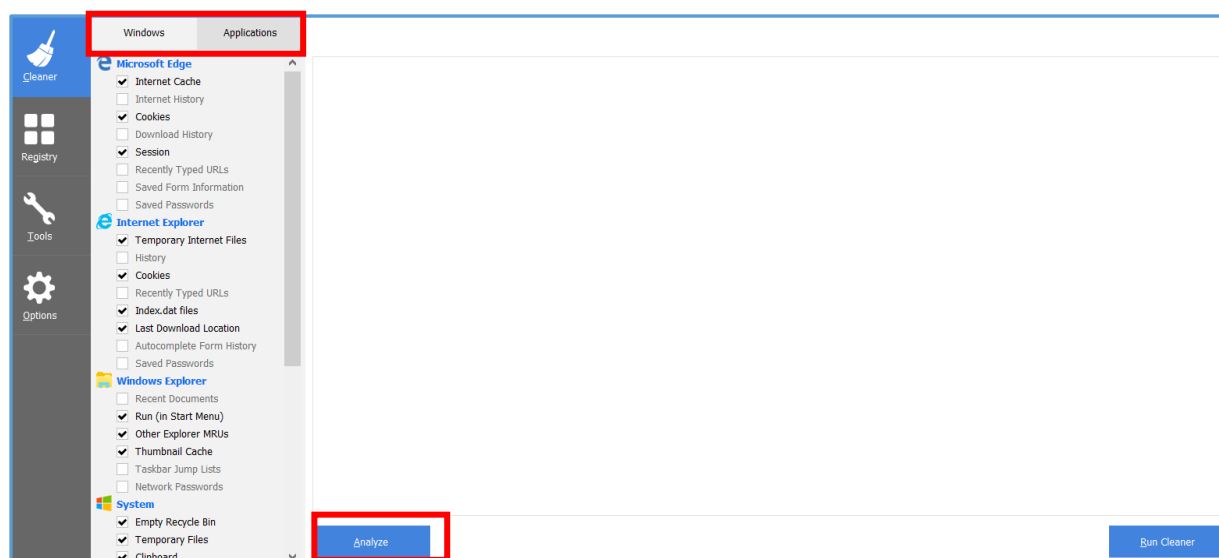


The install program will open an install window that might have a check box that, if not unchecked, will install other software. Watch out for this. Select the Custom install option and select how you would like CCleaner to be installed.



Using CCleaner

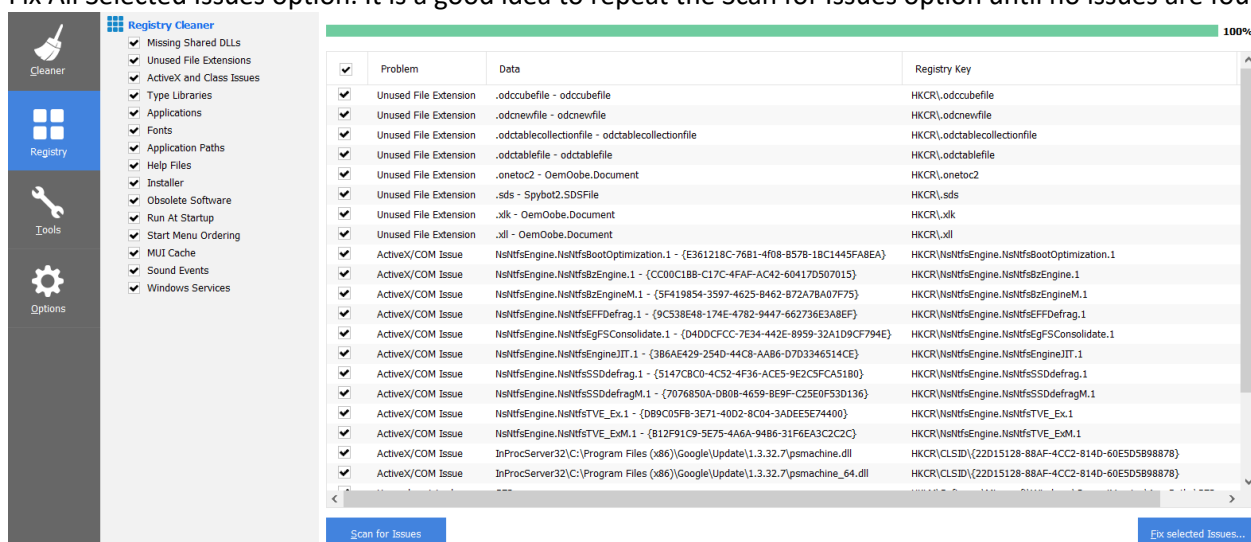
There is a vertical list of options on the left side of the CCleaner window. The Cleaner option allows you to toggle different things to be removed. For example, if you do not want to remove Cookies, or browsing History, select the check marks to toggle the options off. Near the top of the window is a button that has a similar list of options for other applications.



If you select the Analyze button near the bottom of the CCleaner window, the program will go through the motions without deleting any files. It will, however, give you a report of what will be removed if you select the Run Cleaner button.

Cleaning the Registry

When you select the Registry button in CCleaner, you will see two buttons near the bottom of the Window; Scan for Issues and Fix selected issues. After you have scanned for issues, you will see a list of things the system detected. If you then select the Fix selected issues button, you will have the option to backup registry changes. Select yes, and then select Fix All Selected Issues option. It is a good idea to repeat the Scan for Issues option until no issues are found.



Checking the Startup Programs

CCleaner provides an option to check what programs start running when Windows is first started. In most cases, there are programs that you do not want to always be running in the background.

Select the Tools button in CCleaner, then select the Startup option. Locate a program that you do not want running in the background and right click on Yes, then select Disable. Note that the Disable option does not uninstall the program. It simply removes it from the list of programs that run in the background.

Startup	Windows			Scheduled Tasks		Context Menu	
Browser Plugins	Enabled	Key	Program	Publisher	User	File	
Disk Analyzer	Yes	HKCU:Run	CCleaner Monitoring	Piriform Ltd		"C:\Program Files\CCleaner\CClean	
Duplicate Finder	No	HKCU:Run	Epson Stylus NX430	SEIKO EPSON CORPORATION		C:\WINDOWS\system32\spool\DRIV	
System Restore	No	HKCU:Run	OneDrive	Microsoft Corporation		"C:\Users\Judy Taylor\AppData\Lo	
Drive Wiper	Yes	HKCU:Run	SUPERAntiSpyware	SUPERAntiSpyware		C:\Program Files\SUPERAntiSpywar	
	Yes	HKCU:Run	WinPatrol	Ruiware		C:\Program Files (x86)\Ruiware\Wi	
	Yes	HKCU:Run	Zoom				
	No	HKLM:Run	EEventManager	SEIKO EPSON CORPORATION	All users	"C:\Program Files (x86)\Epson Soft	
	Yes	HKLM:Run	IDrive Background process	Prosoftnet	All users	"C:\Program Files (x86)\IDriveWind	

Observe that there is a Tools, Uninstall option that can be used to uninstall programs. It can also sometimes be used to repair programs that have developed problems.

Select a program from the list you want to remove from your computer						
Programs to Remove	Publisher	Install Date	Size	Version	User	
3D Builder	Microsoft Corporation	12/1/2016		12.0.3131.0	All users	Uninstall
Adobe Flash Player 19 NPAPI	Adobe Systems Incorporated	8/10/2016	17.9 MB	19.0.0.245	All users	Repair
Alarms & Clock	Microsoft Corporation	3/16/2017		10.1703.602.0	All users	Regame
App connector	Microsoft Corporation	8/10/2016		1.3.3.0	All users	Delete

Updating CCleaner

From time to time CCleaner will tell you that an update is available. When you go to the update web page be careful. It will offer an upgrade option. Note that the upgrade option costs money, while there is a free version for updating. Scroll down the page to find the free update. See the download note in an earlier illustration.

Google Search Tricks

By Melanie Birnbaum, Teckspert Talk, Century Village Computer Club, Florida

You use Google Search every day, but still all you know is how to search. However, the search engine has plenty of tricks up its sleeve.

Here's an overview of some of the more useful Google search tricks:

- Use quotes to search for an exact phrase. Searching a phrase in quotes will yield only pages with the same words in the same order as what's in the quotes. It's especially useful if you're trying to find results containing a specific phrase.
- Use an asterisk within quotes to specify unknown or variable words. Here's a lesser known trick: searching a phrase in quotes with an asterisk replacing a word will search all variations of that phrase. It's helpful if you're trying to determine a song from its lyrics, but you couldn't make out the entire phrase (e.g. "imagine all the * living for today"), or if you're trying to find all forms of an expression (e.g. "* is thicker than water").
- Use the minus sign to eliminate results containing certain words. You'll want to eliminate results with certain words if you're trying to search for a term that's generating a lot of results that aren't of interest to you. Figure out what terms you're not interested in (e.g. jaguar -car) and re-run the search.
- Search websites for keywords. Think of the "site:" function as a Google search that searches only a particular website. If you want to see every time TIME.com mentioned Google, use the search "Google site:TIME.com".

- Search news archives going back to the mid-1880s. Google News has an option to search over 100 years' worth of archived news from newspapers around the world. The address is:
<https://news.google.com/newspapers?hl=en>
- Compare foods using "vs". Can't decide between a burger or pizza for dinner? Type in "rice vs. quinoa," for example, and you'll receive side-by-side comparisons of the nutritional facts.
- Filter search results for recipes. If you search your favourite food, and then click "Search Tools" right under the search bar, you'll be able to filter recipes based on ingredients, cook time and calories. It's the perfect tool if you have certain dietary restrictions.
- Use "DEFINE:" to learn the meaning of words—slang included. Streamline the dictionary process by using, for example, "DEFINE: mortgage." For words that appear in the dictionary, you'll be able to see etymology and a graph of its use over time alongside the definition. Google will even sift the web to define slang words or acronyms. Try out "DEFINE: bae" or "DEFINE: SMH".
- Play Atari Breakout by searching it on Google Images. The legendary brick breaker game is available for easy access on Google. Just search "Atari Breakout" (without quotes) on Google Images and enjoy.
- Search images using images. Ever come across a photo that looks strangely familiar? Or if you want to know where it came from? If you save the image, and then search it on Google Images (with the camera button), you'll be able to see similar images on the web.
- Press the mic icon on Google's search bar, and say "flip a coin" Google will flip a coin for you when you don't have one on hand.

Wi-Fi File Transfer - Easily move pictures from phone to computer

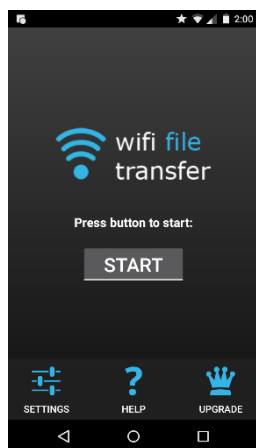
By Phil Sorrentino, Contributing Writer, The Computer Club, Florida

Most of the pictures that most of us take with our phones remain on the phone for a very long time. It is probably because our smart phones are so convenient and easy to use to show photos: just start the App and swipe to the next photo. Our phones are always with us so we can very quickly show our friends all our latest photographically captured experiences. It may also be that there is less of a need to remove photos because our phones have such large memories. Many modern phones have 16 GB of storage. Even on a phone, with a camera with a resolution as large as 12 MP, there is still room for many, many photos. Photos on most phone cameras are produced as .jpg files, which are compressed photo image files. The size of the resulting file is typically around 2 to 5 MB. Phones with 16 GB of memory can easily allocate 1 GB, or so, for photos. So, using as an example a large picture (5MB), you could put 200 photos in that 1 GB memory space (remember 1 GB = 1,000 MB). If you have more memory or smaller photos you could easily keep thousands of photos on that phone. Maybe you've been shown pictures from a phone like that, I know I have.

There are many ways of moving your pictures from your phone to your computer. "Wi-Fi File Transfer" is a free App that allows you to easily accomplish this task. (You can also use it to move files from your computer to your phone.) As with many Apps, there is also a Pro version available at a small cost. Wi-Fi File Transfer is available for both Android and Apple. You can get the Android App from the Google Play store. Before digging into Wi-Fi File Transfer, let me list some other



ways to move your photos from your phone to your computer. First, you can email a photo or two to yourself as an attachment, and then collect the photos from your received email. This is only good for a few pictures because email systems have attachment size limitations. Second, if you have a microSD card slot on your phone, you could move the photos to the microSD card and then move the microSD card to your computer



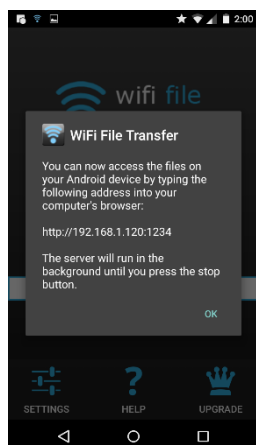
microSD card reader (or SD card reader with a microSD-adapter), and copy the files to the computer. Third, you could use a USB-to-microUSB cable (usually supplied with a phone or tablet) to connect the phone to your computer USB slot. The phone will show up as a device in File Explorer and you can move the photo files from the device to the computer. Fourth, you could use a USB-OTG (On-The-Go) cable to connect a Flash Memory device to your phone. Once connected, copy the files to the Flash Memory and then move the Flash Memory device to the computer USB slot and copy the files from the Flash Memory to the computer. Fifth, upload your photos to a Cloud account, such as OneDrive or Dropbox, with the appropriate App. Then download the photos from your Cloud account to your computer, using a Browser. So much for other methods, now back to Wi-Fi File Transfer.

To get going, start the App in the usual way, by touching the Wi-Fi File Transfer icon. Once started, the following Opening Screen will be displayed.

Opening Screen

Press “START” and the “IP Address” screen will be presented.

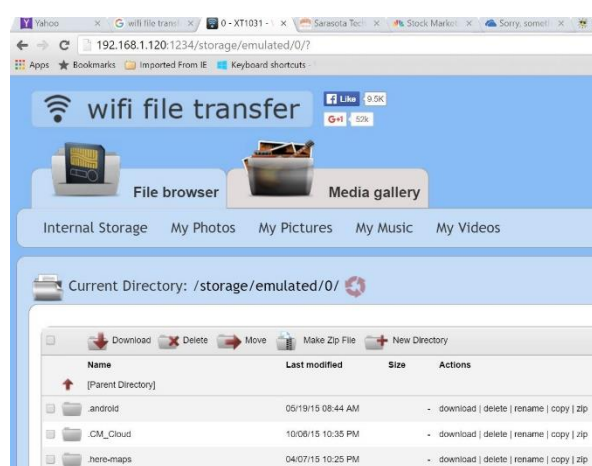
IP Address Screen below



Wi-Fi File Transfer sets up a Client-Server connection, over your Wi-Fi, between your phone and your computer. (Oddly enough, in this setup, the phone is the server and the computer is the client. I point this out here, only because when it comes to moving the files, it is done using the “download” button, not an “upload” button as you might have thought.) The IP Address in the center of the screen is to be used on your computer. On your computer, start a browser, such as Internet Explorer, Chrome, or Edge. In the address bar at the top of the Browser screen, type the IP Address. In this example type “http:// 192.168.1.120:1234”, and press Enter. The browser should go to the Wi-Fi File Transfer screen. On the phone, Press “ok” on the IP Address screen.

Find and click “DCIM” in the list of folders (Directories). In the next screen, click “camera”, and a list of photos will be shown. The photos will probably have titles like “IMG_20160601_195876”, or something similar. The date taken is usually buried in the title, as in this example (June 1, 2016).

Select the photos to be copied to the computer. (If many photos are selected you will have the option to copy them individually or all together in a Zip file. (For more than a few photos, make it easy on yourself and choose the Zip option and then unzip them on the computer, later on.) Once the photos are selected, press “Download”, and your photo(s) will be downloaded to your computer. Once the photos are downloaded, especially if you just downloaded a lot of photos, you can delete them, en masse, from the phone using “Delete”, next to “Download”. (Note that there are directions on the right side of the screen [not shown above] to allow you to “Transfer files to device”. This is essentially an Upload from the computer to the phone. Move files in this direction only if you know what you are moving and you know where to put them.)



Browser Wi-Fi File Transfer Screen

Once the transfer has completed, press “STOP” on the IP Address screen, on the phone, to terminate the client-server connection. Press “Back” or Home to terminate the App. Now all that is left for you to do is to Unzip the files, if they were zipped, Rename the files if desired, and put them in the appropriate location in your Pictures folder organization, and Oh by the way, back them up. So now with Wi-Fi File Transfer you should never have to fear that your pictures will be lost if you lose, or have to replace, your phone.

SIG Reports

Video Inner East

On 3 April, 24 members attended Video Inner East. In John Thomson's absence, Mike Scully kicked off with a run-down of Fujifilm cameras and lenses.



George Skarbek then shared how a realistic commercial for Audi was made on a table-top with a 1/43 model.



Colin Paxman (below) took us behind the scenes on a city street shoot with a Ronin DJI stabiliser.



Richard Balsillie shared some of his first experiences with the Samsung Galaxy S7. He also showed how components from a cheap selfie-stick can be used to mount smartphones on other stability aids (tripods and monopods, etc).

Richard also shared his workflow and first attempts at using ProDad's Mercalli stability software.

In Members' Videos, Frank Catlin took us to Bali, while Barry Horn showed one of his early videos from the 1980s. Trevor Hudson showed us transport options in Cuba, and some of the Art Deco Festival of Napier, New Zealand. George Skarbek took us wandering through the art and artisan colony of Monsalvat and John Dunkerley combined music with the flowing waters of Japanese gardens. Finally, June Furness showed us that a video of passenger planes taking off and landing can be far from boring.



GIMP Presentation by Dave Fuller

Final comments

File handling

Advice was made to preserve the originals of all digital images, and to make copies using the "save as" function under the file tab. The copied file name should be modified to avoid confusion with the original.

(I usually add a suffix to the file name, numeric or alpha, to identify the copy and show its origin.) Do any editing on the copy not the original.

On completion of editing, or when interrupted, save the file.

To save and retain all editing for later use save as a *****.xcf** file. This is a GIMP native format, and it stores almost everything except the undo information. It enables the file to be reopened in GIMP. XCF files are not readable by most other programs that display images.

When completed you can also save in a more widely used format, such as JPEG, PNG, TIFF etc. This can only be done by using the Export function under the File tab. There are many formats listed but every format other than xcf will preserve some image properties and lose others. Exporting an image does not modify the image itself.

Help

GIMP is not easy to use at first sight, the help files are most strongly recommended.

The help files are context sensitive using the F1 key.

The help files themselves are a good introduction to digital editing, as well as explaining GIMP terminology.

For more help look at:

- * the tutorials on the GIMP web site.
- * ask Google
- * ask You tube - there are many, many videos here.

A video can often clarify the problem, before going to the help files for details.

Finally try GIMP you will find it to be a very capable digital editor, and you may become addicted to it.

North East SIGs Major Location & Date-Time changes

These changes will affect the following SIGS:

- North East Genealogy SIG
- North East Daytime SIG
- North East Android SIG

ALL North East SIGs move from Ivanhoe to Heidelberg

The new address is Address:

Hawdon Street Community Hall, 80 Hawdon Street, Heidelberg

Several date & time changes – due to limited booking availability, per following.

- This is a long-term change, commencing for all "North East" SIG meetings after 1-May-2017.
- **Details:**
 - **North East Genealogy SIG**
 - Change to first **Wed** of the month, 10am-12noon
 - Hawdon Street Community Hall, 80 Hawdon Street, Heidelberg
 - **North East Daytime SIG**
 - Varies between **second Wed & second Thu** of the month - note time-of-day varies also
 - **Thu 11-May-2017 (9am-11am), Wed 14-Jun-2017 (12:30pm-2:30pm), Thu 13-Jul-2017 (9am-11am)**
 - From Aug-2017 & thereafter, second Wed of the month, **10am-12noon**.
 - Hawdon Street Community Hall, 80 Hawdon Street, Heidelberg
 - **North East Android SIG**
 - Remains as third Wed of the month, 10am-12noon
 - Hawdon Street Community Hall, 80 Hawdon Street, Heidelberg

Please Note:

There is some free parking if you arrive early. If not then there is two hour parking in the street.

Special Interest Groups

SIG Meetings & Contact Details

Amendments: Please advise changes/corrections to:

calendar-admin@melbpc.org.au/

Most recent changes are at:

<http://www.melbpc.org.au/interest-groups-resources/sig-changes/>

Access (database) and Excel

Date (Jan) No Meeting
Date (Feb-Dec) Second Mon of month (inc. Public Holidays)
Date (Dec) Second Mon of month
Time 6.30pm - 8.30pm
Email access@melbpc.org.au
Location Melb PC HQ, Level 1, 479 Warrigal Rd, Moorabbin Melway:78.D8
Convenor(s) Craig Evans
craig_evans@racv.com.au

Bayside

Date (Jan) Third Thu of month
Date (Feb-Dec) Third Thu of month
Date (Dec) Third Thu of month
Time 10am - 12noon
Email bayside@melbpc.org.au
Location St Stephens Church Hall, 111 North Road (cnr Cochrane St), Brighton Melway:67.F7
Convenor(s) Peter Carpenter - 9596 3441
Brian Fergie
Les Johnston

Beginners East (BEAST)

Date (Jan) No Meeting
Date (Feb-Dec) Third Sun of month
Date (Dec) Second Sun of month

Time 10am - 12.30pm
Email beast@melbpc.org.au
Location Vermont South Community Centre, 1 Karobran Drive, Vermont South Melway:62.G7
Convenor(s) Dave Botherway

Casey

Date (Jan) No Meeting
Date (Feb-Dec) Second Fri of month
Date (Dec) Second Fri of month. (Christmas function - check location/time etc with Convenor)
Time 12.30pm - 3pm
Location Narre Warren Library (Fountain Gate), Overland Drive, Narre Warren Melway:110.D4
Convenor(s) Jan Whitaker - 9705 9009
jwhit@janwhitaker.com
Jan Weiner - 9796 2807
weijan@westnet.com.au

Casey Workshop

Date (Jan) No Meeting
Date (Feb-Dec) Fourth Fri of month
Date (Dec) No Meeting
Time 12.30pm - 3pm
Location Narre Warren Library (Fountain Gate), Overland Drive, Narre Warren Melway:110.D4
Convenor(s) Jan Weiner - 9796 2807
weijan@westnet.com.au
Jan Whitaker - 9705 9009
jwhit@janwhitaker.com

Communications

Date (Jan) No Meeting
Date (Feb-Dec) Second Wed of month
Date (Dec) Second Wed of month
Time 7 - 9.30pm
Email phil@melbpc.org.au
Location Melb PC HQ, Level 1, 479 Warrigal Rd, Moorabbin Melway:78.D8
Convenor(s) Phil Lew - 0418 567 019

Digital Images

Date (Jan) Third Fri of month
Date (Feb-Dec) Third Fri of month
Date (Dec) No Meeting

Time 10am - 12noon
Location Wadham House, 52 Wadham Parade,
Mount Waverley Melway:61.E12
Convenor(s) Ian Bock - 9807 3701
bockey@melbpc.org.au

East

Date (Jan) No Meeting
Date (Feb-Dec) Second Thu of month
Date (Dec) Second Thu of month
Time 7.30pm - 9:30pm
Email east@melbpc.org.au
Location Eley Park Community Centre,
87 Eley Rd,
Blackburn South Melway:61.H5
Convenor(s) Paul Woolard - 9877 1059
Ian Dewhurst - 0438 480 500

East Workshop & 3D Printing

Date (Jan) No Meeting
Date (Feb-Dec) Second Sun of month. NO meeting in
May - Mother's Day.
Date (Dec) Second Sun of month
Time 10am - 2pm
Email eastwsh@melbpc.org.au
Location Wadham House, 52 Wadham Parade,
Mount Waverley Melway:61.E12
Convenor(s) Paul Woolard - 0417 566 209
pwoolard@melbpc.org.au
John Swale (3D printing)
- 0417 530 766

Essendon - Main meeting

Date (Jan) No Meeting
Date (Feb-Dec) First Fri of month
Date (Dec) No Meeting
Time 9:30am - 12noon
Email essendon@melbpc.org.au
Location Nancye Kirchner Neighbourhood
Centre, Doyle Street (corner
Somerset St),
Avondale Heights Melway:27.D6
Convenor(s) John Guegan - 9317 7114

Essendon - Open Forum

Date (Jan) No Meeting
Date (Feb-Dec) Second Fri of month
Date (Dec) Second Fri of month. (Christmas
Function, 10:30am)
Time 9:30am - 12noon
Email essendon@melbpc.org.au

Location Nancye Kirchner Neighbourhood
Centre, Doyle Street (corner
Somerset St),
Avondale Heights Melway:27.D6
Convenor(s) John Guegan - 9317 7114

Essendon - Varies

Date (Jan) No Meeting
Date (Feb-Dec) Third Fri of month
Date (Dec) No Meeting
Time 9:30am - 12noon
Email essendon@melbpc.org.au
Location Nancye Kirchner Neighbourhood
Centre, Doyle Street (corner
Somerset St),
Avondale Heights Melway:27.D6
Convenor(s) John Guegan - 9317 7114

Everything Apple

Date (Jan) No Meeting
Date (Feb-Dec) Fourth Sun of month
Date (Dec) No Meeting
Time 2pm - 4pm
Email everything-apple@ausom.net.au
Location Melb PC HQ, Level 1, 479 Warrigal Rd,
Moorabbin Melway:78.D8
Convenor(s) Julie Ackland
Peter Emery

Genealogy East

Date (Jan) No Meeting
Date (Feb-Dec) Third Sun of month
Date (Dec) Second Sun of month
Time 1pm - 3.30pm
Email geneast@melbpc.org.au
Location Vermont South Community Centre,
1 Karobran Drive,
Vermont South Melway:62.G7
Convenor(s) Denis Street

Hardware

Date (Jan) No Meeting
Date (Feb-Dec) Second Fri of month
Date (Dec) Second Fri of month
Time 10am - 12noon
Location Wadham House, 52 Wadham Parade,
Mount Waverley Melway:61.E12
Convenor(s) Kelvin Cording - 9438 1047
kcording@bigpond.net.au

iHelp

Date (Jan) Approximately 6 monthly
Date (Feb-Dec) Approximately 6 monthly
Date (Dec) Approximately 6 monthly
Time 7pm - 9pm
Email ihelp@melbpc.org.au
Location Melb PC HQ, Level 1, 479 Warrigal Rd,
Moorabbin Melway:78.D8
Convenor(s) Dave Simpson

Investment Tools - WASINT

Date (Jan) No Meeting
Date (Feb-Dec) Second Tue of month
Date (Dec) Second Tue of month
Time 10.30am - 12.30pm
Email wasant@melbpc.org.au
Location Melb PC HQ, Level 1, 479 Warrigal Rd,
Moorabbin Melway:78.D8
Convenor(s) Richard Solly

Linux Workshop - Moorabbin

Date (Jan) No Meeting
Date (Feb-Dec) Second Sat of month
Date (Dec) Second Sat of month
Time 10:30am - 1:30pm
Email linuxworkshop@melbpc.org.au
Location Melb PC HQ, Level 1, 479 Warrigal Rd,
Moorabbin Melway:78.D8
Convenor(s) David Hatton

MACE (Atari Computers)

Date (Jan) Third Sun - BBQ - check with
Convener for location
Date (Feb-Dec) Third Sun of month
Date (Dec) Third Sun of month
Time 10am - 2pm
Email maceatari@gmail.com
Location Melb PC HQ, Level 1, 479 Warrigal Rd,
Moorabbin Melway:78.D8
Convenor(s) Andrew Boschan
andrewbosc@gmail.com

Macedon Ranges

Date (Jan) Third Sun of month
Date (Feb-Dec) Third Sun of month
Date (Dec) No meeting
Time 2pm - 4pm
Location Further Education Centre,
18 Hamilton St,
Gisborne
Convenor(s) Colin Seymour
colinspc1@yahoo.com.au

Microcontroller

Date (Jan) Second Wed of month
Date (Feb-Dec) Second Wed of month
Date (Dec) Second Wed of month
Time 7pm - 9.30pm
Email microcontroller@melbpc.org.au
Location Melb PC HQ, Level 1, 479 Warrigal Rd,
Moorabbin Melway:78.D8
Convenor(s) Phil Lew - 0418 567 019
phil@melbpc.org.au
John Hollow - 0417 031 164

Microcontroller Workshop

Date (Jan) Second & Fourth Sat of month.
Date (Feb-Dec) Second & Fourth Sat of month.
Date (Dec) Second Sat (only) of month.
Time 12noon - 5pm
Email

Location Melb PC HQ, Level 1, 479 Warrigal Rd,
Moorabbin Melway:78.D8
Convenor(s) John Shirt - 0409 568 267
Rob Brown - 0419 285 806

Mornington Peninsula - General, Q&A

Date (Jan) Third Mon of month
Date (Feb-Dec) Third Mon of month
Date (Dec) No Meeting
Time 9.30am - 12noon
Email peninsula@melbpc.org.au
Location Mornington Community Information and
Support Centre, 320 Main St,
Mornington Melway:104.E12
Convenor(s) Terry Said - 0427 750 327
dulnain@gmail.com
Ian Thomson
iaroth@netspace.net.au
Colin Ackehurst

Mornington Peninsula - Family History

Date (Jan) Third Mon of month
Date (Feb-Dec) Third Mon of month
Date (Dec) No Meeting
Time 1:30pm - 4:30pm
Email peninsula@melbpc.org.au
Location Mornington Community Information and
Support Centre, 320 Main St,
Mornington Melway:104.E12
Convenor(s) Colin Ackehurst
colin_a_ackehurst@bigpond.com

Multimedia Home Entertainment

Date (Jan) No Meeting
Date (Feb-Dec) First Fri of month
Date (Dec) First Fri of month
Time 10am - 12noon
Email multimed@melbpc.org
Location Wadham House, 52 Wadham Parade,
Mount Waverley Melway:61.E12
Convenor(s) John Hall - 9803 2731
johnhall@melbpc.org.au
Kelvin Cording - 9438 1047
kcording@bigpond.net.au

Music

Date (Jan) Third Thu of month
Date (Feb-Dec) Third Thu of month
Date (Dec) No Meeting
Time 7.30pm - 9.30pm
Email music@melbpc.org.au
Location Melb PC HQ, Level 1, 479 Warrigal Rd,
Moorabbin Melway:78.D8
Convenor(s) Bill Sakell
John Shirt - 0409 568 267

North East Android

Date (Jan) No Meeting
Date (Feb-Dec) Third Wed of month
Date (Dec) Second Wed of Dec - join with North
East Daytime SIG - end-of-year
breakup
Time 10am - 12noon
Email ne-android@melbpc.org.au
Location **Hawdon Street Community Hall,**
80 Hawdon Street,
Heidelberg Melway:32.A4
Convenor(s) Colin Lampshire
9857 5372 or 0413 640 408
lampshir@melbpc.org.au
Kelvin Cording - 9438 1047

North East Daytime

Date (Jan) No Meeting
Date (Feb-Dec) Normally, second Wed of month.
Except: Thu 11-May-2017 (9am-11am),
Wed 14-Jun-2017 (12:30pm-2:30pm),
Thu 13-Jul-2017 (9am-11am)
Date (Dec) Second Wed of month
Time 10am - 12noon
Email neday@melbpc.org.au
Location **Hawdon Street Community Hall,**
80 Hawdon Street,

Heidelberg Melway:32.A4
Convenor(s) Colin Lampshire
9857 5372 or 0413 640 408
lampshir@melbpc.org.au

North East Genealogy

Date (Jan) No Meeting
Date (Feb-Dec) First Wed of month
Date (Dec) First Wed of month
Time 10am - 12noon
Email negen@melbpc.org.au
Location **Hawdon Street Community Hall, 80**
Hawdon Street,
Heidelberg Melway:32.A4
Convenor(s) Lynn. Hammet
lynnhammet@gmail.com

Northern Suburbs Linux

Date (Jan) Third Mon of month
Date (Feb-Dec) Third Mon of month
Date (Dec) No Meeting
Time 7.30pm - 9.30pm
Email nslig@melbpc.org.au
Location Community Meeting Room, Watsonia
Library, 4 Ibbotson St,
Watsonia Melway:20.E4
Convenor(s) David Hatton
Stephen Davidson

Online

Date (Jan) Available online at any time
Date (Feb-Dec) Available online at any time
Date (Dec) Available online at any time
Time Available online at any time
Email kazkev@melbpc.org.au
Location Melb PC Yammer online forum
Convenor(s) Kevin Martin
Evening only - 5964 7627
or 0407 343 162

Programming

Date (Jan) Fourth Wed of month
Date (Feb-Dec) Fourth Wed of month
Date (Dec) No Meeting
Time 6:30pm - 9:30pm
Email programming@melbpc.org.au
Location Melb PC HQ, Level 1, 479 Warrigal Rd,
Moorabbin Melway:78.D8
Convenor(s) John Viney

Raspberry Pi - Moorabbin

Date (Jan) Second Sat of month
Date (Feb-Dec) Second Sat of month
Date (Dec) Second Sat of month
Time 2pm - 4pm
Email raspi-moorabbin@melbpc.org.au
Location Melb PC HQ, Level 1, 479 Warrigal Rd,
Moorabbin Melway:78.D8
Convenor(s) Mohan Gupta - 0421-214-081
Rob Brown - 0419 285 806

Raspberry Pi - Mt Waverley

Date (Jan) Fourth Fri of month
Date (Feb-Dec) Fourth Fri of month
Date (Dec) No Meeting
Time 10am - 12noon
Email raspi@melbpc.org.au
Location Wadham House, 52 Wadham Parade,
Mount Waverley Melway:61.E12
Convenor(s) John Hall - 9803 2731
johnhall@melbpc.org.au
Lance Lloyd - 9884 5559
lancelloyd@melbpc.org.au

Sunbury Daytime - New Users

Date (Jan) No Meeting
Date (Feb-Dec) First Thu of month
Date (Dec) First Thu of month
Time 9.30am - 12noon
Email sunburydaytime@gmail.com
Location Sunbury Senior Citizens Centre (back room), 8 O'Shannassy Street,
Sunbury Melway:382.E4
Convenor(s) Kevin Hale - 9740 5786

Sunbury Daytime - Advanced

Date (Jan) No Meeting
Date (Feb-Dec) Second Thu of month
Date (Dec) Second Thu of month
Time 9.30am - 12noon
Email sunburydaytime@gmail.com
Location Sunbury Senior Citizens Centre (back room), 8 O'Shannassy Street,
Sunbury Melway:382.E4
Convenor(s) Kevin Hale - 9740 5786

Sunbury Daytime - Main Meeting

Date (Jan) No Meeting
Date (Feb-Dec) Third Thu of month
Date (Dec) No Meeting
Time 9.30am - 12noon

Email sunburydaytime@gmail.com
Location Sunbury Senior Citizens Centre (back room), 8 O'Shannassy Street,
Sunbury Melway:382.E4
Convenor(s) Kevin Hale - 9740 5786

Sunbury Daytime - Maintenance & Linux

Date (Jan) No Meeting
Date (Feb-Dec) Fourth Thu and Fifth Thu of month.
Date (Dec) No Meeting
Time 9.30am - 12noon
Email sunburydaytime@gmail.com
Location Sunbury Senior Citizens Centre (back room), 8 O'Shannassy Street,
Sunbury Melway:382.E4
Convenor(s) Kevin Hale - 9740 5786

Video Inner East

Date (Jan) No Meeting
Date (Feb-Dec) Second Mon of Feb; 1st Mon of Mar & Apr; 2nd Mon of May; No meeting in Jun; 2nd Mon of month for Jul-Nov
Date (Dec) Second Mon of month
Time 7:30pm - 9:30pm
Email rbalse@tpg.com.au
Location Copland Room, Ashburton Library, 154 High St,
Ashburton Melway:60.C9
Convenor(s) Richard Balsillie - 9809 4116

Video Production - Pinnacle

Date (Jan) Fourth Wed of month
Date (Feb-Dec) Fourth Wed of month
Date (Dec) No Meeting
Time 10:00am - 12:30pm
Location Melb PC HQ, Level 1, 479 Warrigal Rd,
Moorabbin Melway:78.D8
Convenor(s) Tony Pickup - 9878 0706
tonypickup@optusnet.com.au
Wayne Spicer - (03) 5971 1617
spisawn@optusnet.com.au

Video Production - Sony

Date (Jan) Second Wed of month
Date (Feb-Dec) Second Wed of month
Time 10am - 12noon
Location Melb PC HQ, Level 1, 479 Warrigal Rd,
Moorabbin Melway:78.D8
Convenor(s) Roger Wragg
rdwragg@fastmail.fm
Bob Flack

WAFFLE - wine & fine food lovers event

Date (Jan) No Meeting
Date (Feb-Dec) First Wed of month
Date (Dec) First Wed of month
Time 9.35pm (after the Monthly Meeting)
Email phil@melbpc.org.au
Location Fong's Chinese Restaurant, 725 Centre Rd (cnr Francesco St), **Bentleigh East** Melway:77.J1
Convenor(s) Phil Lew - 0418 567 019
Tom Rado - 9807 4072

Website Design - Tutorials

Date (Jan) No Meeting
Date (Feb-Dec) Fourth Sun of month
Date (Dec) No Meeting
Time 2pm - 4pm
Email webdesign@melbpc.org.au
Location Melb PC HQ, Level 1, 479 Warrigal Rd, **Moorabbin** Melway:78.D8
Convenor(s) Fleur Stephens - 0407 330 963

Website Design - Troubleshooting

Date (Jan) No Meeting
Date (Feb-Dec) Fourth Sun of month
Date (Dec) No Meeting
Time 4pm - 6pm
Email webdesign@melbpc.org.au
Location Melb PC HQ, Level 1, 479 Warrigal Rd, **Moorabbin** Melway:78.D8
Convenor(s) Fleur Stephens - 0407 330 963

Windows Plus

Date (Jan) No Meeting
Date (Feb-Dec) Normally, Third Sat of month.
Meeting Sat 15-Apr-2017 cancelled due to Easter.
Date (Dec) No Meeting
Time 10am - 12noon
Email winplus@melbpc.org.au
Location Melb PC HQ, Level 1, 479 Warrigal Rd, **Moorabbin** Melway:78.D8
Convenor(s) John Swale - 0417 530 766
Barry Stone

Wyndham - General

Date (Jan) No Meeting
Date (Feb-Dec) Second Mon of month (inc. Public Holidays)
Date (Dec) Second Mon of month
Time 7.30pm - 9.30pm
Location Room 3, Central Park Community Centre, 80 Lonsdale Circuit (off Franklin Blvd), **Hoppers Crossing** Melway:206.J1
Convenor(s) John Healey
jph@melbpc.org.au
Brian Hallam

Wyndham - Multimedia

Date (Jan) No Meeting
Date (Feb-Dec) Third Tue of month
Date (Dec) Change to second Mon of Dec - break-up party. Combined with other group.
Time 7.30pm - 9.30pm
Location Room 3, Central Park Community Centre, 80 Lonsdale Circuit (off Franklin Blvd), **Hoppers Crossing** Melway:206.J1
Convenor(s) John Healey
jph@melbpc.org.au
Brian Hallam

Yarra Ranges

Date (Jan) No Meeting
Date (Feb-Dec) Normally, fourth Tue of month. Tue 18-Apr-2017 due to Anzac Day.
Date (Dec) Third Tue of month
Time 9.15am - 12:30pm
Email yrig@melbpc.org.au
Location Japara Living and Learning Centre, 54-58 Durham Rd, **Kilsyth** Melway:51.J5
Convenor(s) Bryan Paten - 0429 430 640
Shane Mason - 9733 5390



Membership Drive

Introduce a new member* to Melbourne PC User Group and receive credit towards your membership fees.

Did you know that Melb PC held its first meeting in November 1983?

Yes! it's true.

The group flourished and in 1993 started its own Internet service, becoming one of the founding suppliers of the Internet in Australia, and it is still a licensed ISP. Melb PC is Australia's largest and most active personal computer/technology group with thousands of members participating in more than 40 Special Interest Groups (SIGs) that meet regularly throughout Melbourne.

New members will receive all the benefits you already enjoy – the digital newsletter, the help lines, the Special Interest Groups (SIGs), the Monthly meetings and access to mobile broadband, personal email or IP4 Rental/Web Hosting/Private email Hosting, Microsoft OS discounts and you will be helping your club to grow.

You know how much you enjoy being part of Melbourne PC User Group. So why not bring along a friend to enjoy it too? Prospective new members are always warmly welcome at the Monthly Meeting and SIG Meetings.

Each new member* you enrol gives you three months credit towards your membership renewal. (approx. \$24.00 value against a full membership). The more new members you enrol, the more credit towards your next membership renewal.

(* This does not include Family members or anyone re-joining within 12 months of leaving Melb PC).



MELBOURNE PC USER GROUP INC.

MEMBERSHIP APPLICATION FORM

Title	First Name	Last Name	
Business Name			
Address			
Suburb		Post Code	
Phone		Mobile Number	
DOB	Preferred Email Address		
SUMMARY		Additional Family Members or Corporate Representatives (Maximum 2 names)	
Individuals	\$95 <input type="checkbox"/>	Title	First Name
Additional Family Members (Spouse and children)	\$25 <input type="checkbox"/>	Last Name	Phone
Pensioners/ Adult students A (25+)*	\$80 <input type="checkbox"/>	Title	First Name
Students B (14-25 yrs.)	\$35 <input type="checkbox"/>	Last Name	Phone
Corporate	\$190 <input type="checkbox"/>	Title	First Name
(One membership is two representatives)		Last Name	Phone
TOTAL: \$ <input type="text"/>		Please provide emergency contact details below.	
		Full Name.	
		Phone no.	

Referred by member: _____ full name or membership number /SIG_____

Terms and conditions

- Adult students A must attach a photocopy of their student card or letter from their educational institution confirming full student status.
- All student B members must have a Student Card and have evidence of their age at time of joining.
- Pensioners must attach a photocopy showing both sides of their Centrelink Pension Concession Card. Change of family member(s) must be identified in writing to the club secretary.

I hereby apply for membership of Melbourne PC Users Group Inc. (A000329V) and agree to abide by its rules while I remain a member.

Signature _____ Date ____/____/____

Payment Details

Name on Card	Expiry Date
Credit Card Number	
Signature	Date ____/____/____

Email User Name Selection

List the user ("login") names you would like in order of preference. Write very clearly, to avoid our confusing certain letters. User names are expressed in lower case letters and must represent your real name in some recognisable way e.g. "John J. Jones" might request user names such as "john", "johnj", "jjones", etc. Any user name that is already allocated or deemed unsuitable in the opinion of the system administrators will not be allocated.

Choice 1. _____@melbpc.org.au

Choice 2. _____@melbpc.org.au

office@melbpc.org.au www.melbpc.org.au

Unit 26, 475 Warrigal Road, Moorabbin, Victoria 3189

Phone: (03) 9276 6000



MELBOURNE PC USER GROUP INC.

ABN 43 196 519 351

(Victorian Association Registration No. A0003293V)

Unit 26, 479 Warrigal Road, Moorabbin Vic 3189 Australia

Telephone: (03) 9276 4000

Email: office@melbpc.org.au Web: www.melbpc.org.au

"Members helping Members"

APPLICATION FOR MOBILE 3G/4G BROADBAND

Name		Membership Number
Address		Current Contact Email Address
Suburb	Post Code	Phone

* SEE TERMS AND CONDITIONS OVERLEAF. YOU ARE REQUIRED TO SIGN THE TERMS AND CONDITIONS INDICATING YOU HAVE READ AND UNDERSTOOD THEM.

* Complete all fields on this Mobile Broadband Application. This Information is required for the system database. Incomplete applications will be returned.

3G/4G MOBILE DATA PLANS

3GB	5GB	7GB	9GB	12GB	15GB
\$25 PER MONTH	\$35 PER MONTH	\$40 PER MONTH	\$50 PER MONTH	\$60 PER MONTH	\$65 PER MONTH
First month in advance (\$50), thereafter \$25 on a direct debit on credit card for 12 months. Total spend \$300.00 DEVICE INCLUDED	First month in advance (\$70), thereafter \$35 on a direct debit on credit card for 12 months. Total spend \$420.00 DEVICE INCLUDED	First month in advance (\$80), thereafter \$40 on a direct debit on credit card for 12 months. Total spend \$480.00 DEVICE INCLUDED	First month in advance (\$100), thereafter \$50 on a direct debit on credit card for 12 months. Total spend \$600.00 DEVICE INCLUDED	First month in advance (\$120), thereafter \$60 on a direct debit on credit card for 12 months. Total spend \$720.00 DEVICE INCLUDED	First month in advance (\$130), thereafter \$65 on a direct debit on credit card for 12 months. Total spend \$780.00 DEVICE INCLUDED
EXCESS DATA USAGE COSTS \$10.00 PER 1GB OR PART THEREOF.	EXCESS DATA USAGE COSTS \$10.00 PER 1GB OR PART THEREOF.	EXCESS DATA USAGE COSTS \$10.00 PER 1GB OR PART THEREOF.	EXCESS DATA USAGE COSTS \$10.00 PER 1GB OR PART THEREOF.	EXCESS DATA USAGE COSTS \$10.00 PER 1GB OR PART THEREOF.	EXCESS DATA USAGE COSTS \$10.00 PER 1GB OR PART THEREOF.

3GB PLAN \$234 upfront for 12 month contract on 3G/4G Plan= \$19.50 PER MONTH
(EXCESS DATA USAGE COSTS \$10.00 PER 1GB OR PART THEREOF.)

MODEMS: USB Modem **Free** ☐ Wi-Fi Modem Huawei E5573 \$100 ☐ USB Wi-Fi Modem (car kit included) \$116 ☐

NOTE: We are no longer supplying 3G Mobile Broadband modems due to our Optus upgrade to the 4G service. This does not apply to the Voice and Data plans.

COVERAGE: Coverage depends on your device and plan. For detailed coverage maps, including 3G, 4G and 4G Plus maps see optus.com.au/coverage.

BYO PHONE VOICE and DATA 3G/4G

Do you need more Voice and less data? More data and less Voice? That's not an issue.

PLANS ARE FLEXIBLE ENOUGH TO SUIT ANY NEED, CONTACT THE OFFICE. PLANS START AS LOW AS \$18 A MONTH!

<input type="checkbox"/> \$35 MONTHLY SIM PLAN on 4G network (\$420.00 total spend for 12 months, pay monthly) <ul style="list-style-type: none"> ● Standard calls to friends and family within Australia ● \$500 of included value ● Massive 2.5GB of data! <p>Just bring your own phone and get connected on the Optus network</p> <p><small>Pricing Information: The cost of a two minute standard national voice call is \$2.36. The cost of sending a standard national TXT is 30c. *Includes standard national & international voice & video calls & TXT & PXT; voicemail; calls to 1223, 1225, 13, 15 & 18 numbers; & re-routed calls. International Roaming (Contact office for pricing), Excess data usage (\$10.00 per GB).</small></p>	<input type="checkbox"/> \$55 MONTHLY SIM PLAN on 4G network (\$660.00 total spend for 12 months, pay monthly) <ul style="list-style-type: none"> ● Unlimited Phone calls and texts within Australia (Excluding International calls) ● Standard calls to friends and family within Australia ● Massive 4GB of data! <p>Just bring your own phone and get connected on the Optus network</p> <p><small>Things you will be charged for: Directory assistance (50c per call), Standard national video calling (\$1.00 per minute plus 40c flag fall), 124YES (90c per minute plus \$1.75 flag fall), International Roaming (Contact office for pricing), Premium talk and text to 19 numbers (Extra charge as advised by that provider) & Excess data usage (\$10.00 per GB).</small></p>
---	---

*Melb PC Mobile Broadband Internet Terms and Conditions

A. Definitions

"Melb PC" means Melbourne PC User Group incorporated or its assignee;

"Member" means a financial member of Melbourne PC User Group and includes:

a) "Full Member" A person accepted into the Group after payment of the current full membership fee, or the related Student or Pensioner concession fee.

b) "Family Member" A domiciled spouse, partner, child or relative of a full member accepted to participate in activities of the Group and use that Member's Internet account after payment of the Family Membership fee; the subscriber means the MelbPC full member who has accepted the Melb PC Internet Agreement and paid fees for the subscription period and includes both Full and Email account subscribers. (see Level of Description); "subscription periods" means the period in advance for which the subscriber has paid in full being one of the periods of subscription offered by Melb PC from time to time.

B. Subscription type & Details.

Subscription Type	Annual Fee or Monthly Fee	email & Newsgroup Storage or Mail Quota (Limit)	Browsing	Time Limit	Home Page Storage	Download Limit	When Limit Reached
3G/4G Mobile Broadband 3GB 3G/4G Mobile Broadband 5GB 3G/4G Mobile Broadband 7GB 3G/4G Mobile Broadband 9GB 3G/4G Mobile Broadband 12GB 3G/4G Mobile Broadband 15GB	\$234pa or \$25 pcm \$35 pcm \$40 pcm \$50 pcm \$60 pcm \$65 pcm		Yes			3GB pcm 5GB pcm 7GB pcm 9GB pcm 12GB pcm 15GB pcm	Excess data usage on all plans costs \$10.00 per TGB or part thereof
4G Voice and Data Plan \$35 4G Voice and Data Plan \$55	\$35 pcm \$55 pcm		Yes			2.5GB pcm 4GB pcm	Excess data usage on all plans costs \$10.00 per TGB or part thereof
Email account (office365.melbpc.org.au)	\$0	Unlimited	nil		Nil	nil	

The above charges and details are subject to change from time to time. Limits and Time Quota: daily (non-cumulative) plus bonus time in non-peak periods.

Email Account Subscriber (available to all Melb PC Members without charge)

C. Description of Service(s)

General:

Melbourne PC User Group Inc. A0003293V (Melb PC) Internet Service network (the Network) is a service owned and operated by Melb PC for its members. It is a subscriber-funded service administered by the Internet Management Subcommittee (the subcommittee).

Function of the Melb PC Network: The primary function of the Network is to support the transfer of information to and from Melb PC members and the International community, subject to the terms of this agreement.

Access Software: The subscriber will need to acquire suitable mail, news and Web software from our shareware library or other resources. However, Melb PC makes available a configuration kit that automates this process for those who require it.

Accounts: Accounts are issued only to individuals, not company names; Melb PC may reject an application without stating a reason.

Support: Volunteers offer their help in local newsgroups and via an Internet Help team with interaction through Web Boards, e-mail and direct telephone support.

Duration: The subscription to the Network is for one year from the date of acceptance. It automatically terminates upon expiry of membership of MelbPC if that occurs earlier.

Acknowledgment: Successful applicants will include individuals whose forms are correctly filled out and whose funds have been transferred to the Melb PC Bank account.

Net Etiquette: Melb PC endorses adherence to ("Net etiquette" or "Netiquette") as deemed by the subcommittee from time to time and to prevailing international standards widely accepted as suitable behavior for using the Internet.

D. Terms of Agreement

- The subscriber asks Melb PC to provide a level of Internet access and Melb PC agrees to do so.
- This agreement starts when an authorized officer of Melb PC has executed it and Melb PC has received a cleared payment for the subscription period.
- If the subscriber renews this agreement for a further subscription period, this agreement applies to the renewed subscription period unless the parties agree otherwise in writing.
- The subscriber acknowledges that:
 - Continuity and speed of the Internet access depends on a wide range of factors many of which are beyond the control of Melb PC.
 - Melb PC has no control over the accuracy of appropriateness of any information on the internet.
 - Melb PC is not responsible for any material available on the Internet.
 - The subscriber's Internet access may be interrupted by equipment failure, the need for routine maintenance peak demand and so on.
 - Melb PC cannot guarantee that the subscriber will be able to secure access at any given time or that fluctuations in demand by other subscribers will not prevent the subscriber from using the full amount of the maximum daily time allowance on any given day.
 - Melb PC cannot guarantee that subscriber's home pages will always be available.
 - Dial up and Mobile Broadband Internet Subscribers are responsible for writing and uploading their own home pages and keeping backup copies of same. Melb PC does not back up these home pages. Subscribers will need to reload their own home pages in the event that the Melb PC facilities suffer any data loss.
 - The right to publish and communicate using home pages is granted to full Internet subscribers in the spirit of user group activities of sharing and furthering the computing experience. The quality of the Melb PC Internet service will be protected by Melb PC reserving its right to suspend the access to any publications of a subscriber who generates a disproportionate amount of Internet traffic. Subject to matters of the kind referred to in the previous clause and to the subscriber's access limits, Melb PC will use its best endeavours to keep Internet access available continuously and to allow the subscriber to have access for the current daily time allowance as set from time to time.
- The subscriber will indemnify Melb PC against any liability, claim, action, suit, demand, loss, cost or expense arising out of or in any way connected with this agreement or Internet access, including without limitation any negligence by Melb PC, its servants or agents.
- The subscriber will pay fees according to Melb PC's standard pricing list from time to time, and a copy of the list certified by an officer of Melb PC is conclusive evidence of the prices applicable at any time.
- Any notice given about any matter concerning this agreement may be given by clicking an accept button following the display of the agreement on a web page, by fax, e-mail or post at the last fax number email or postal address notified to the sender and is deemed to have been received at the time when it would have arrived in the ordinary course of the relevant type of transmission.
- Melb PC may change any term of this Agreement or make additional rules at any time by means of notification delivered in accordance with clause 9. Subscriber may refuse to accept any such change and terminate or her Internet access and receive a pro-rata refund for any paid subscription if a request to this effect is received within 14 days from the deemed receipt date of a notice of changes. Should a subscriber continue to keep using the service past the date of the notice deemed received as described in clause 9, the subscriber shall be deemed to accept the changes. A copy of the rules certified by an officer of Melb PC is conclusive evidence of the rules applicable at any time. The rules from time to time will apply as if they were set out in full as terms of this agreement.
- The subscriber must not deliberately or recklessly do anything that damages Melb PC's equipment, software, setup or services.
- The subscriber must not use Internet access to annoy, harass or harm other Internet users including sending of viruses either wittingly or unwittingly and the sending of spam or unsolicited bulk email.
- The subscriber must not use Internet access for any unlawful purpose or in any unlawful manner.
- Melb PC does not review any publications or communication and does not verify, endorse, or otherwise take responsibility for the content of same.
- Subscribers are legally responsible for their own publications and communications.
- The subscriber will keep safe and confidential any access numbers, codes or passwords allotted to them by Melb PC and notify Melb PC without delay of any compromise of that information.
- Melb PC may suspend or terminate the subscribers Internet access immediately if the subscriber breaches this agreement wittingly or unwittingly or fails to promptly pay any money owed to Melb PC or ceases to be a member of Melb PC.
- Melb PC may delete without notice any material found on its storage disks without giving any reason for doing so.
- Melb PC may make and keep any record it requires for the purpose of this agreement or the rules or for the operation of its services or as required by the law or its officers.
- The subscriber must not transfer, sell or share internet access rights, or allow the account to be used by any other person, other than those Melb PC Family Members who are listed on this application and have paid the relevant charges.
- The user's last name must be displayed in all e-mail and news messages. The user's first name or initials may be displayed as desired.
- Commercial traffic, in the form of private messages and advertisements in newsgroups designated for that purpose, is permitted within the bounds of Net etiquette.
- The "Organisation" field in private email or public newsgroup article headers must always be Melbourne PC User Group Australia, the name of the service provider. Any other organisation or business name is permitted only in the four-line (maximum) "signature" text that is optionally inserted at the end of the message or article.
- The "From" field used in email and news messages may be the Melb PC assigned email address, e.g. jones@melbpc.org.au or a "Spam-trap" address, e.g. jones@notspam.org.au or, subject to Clause 22 an external address, e.g. jones@hotmail.com.
- Melb PC may assign its rights and obligations to full Internet Subscribers under this agreement to an Internet access provider that is of equal standard to Melb PC and after notice of assignment is given to the subscriber, this agreement shall have operation as if it had been entered into between the assignee and the subscriber and Melb PC's rights (except for its right to recover any money owed to it immediately before the assignment) and obligations under this agreement shall be at an end. Services to Associate Internet Subscribers shall be limited to the period Melb PC is able to provide them from its own resources.
- The parties submit to the law of Victoria, Australia in relation to any the interpretation of this agreement, or any dispute arising out of it.
- To the extent permitted by law and except as expressly provided to the contrary in this Agreement, all warranties whether express, implied, statutory or otherwise, relating in any way to the subject matter of this Agreement or to this Agreement generally, are excluded (Where legislation implies in this Agreement any condition, or warranty, and that legislation avoids or prohibits provisions in a contract excluding or modifying the application of or the exercise of or liability under such term, such term shall be deemed to be included in this Agreement. However, the liability of Melb PC for any breach of such term shall be limited at the option of Melb PC, to any one or more of the following if the breach related to goods, the replacement of the goods or the supply of equivalent goods; the repair of such goods; the payment of the cost of replacing the goods or of acquiring equivalent goods, or the payment of the cost of having the goods repaired; and if the breach relates to services the supplying of the services again; or the payment of the cost of having the services supplied again. To the extent permitted by law and except as expressly provided to the contrary in this Agreement Melb PC shall not be under any liability (contractual, tortious or otherwise) to subscriber in respect of any loss or damage (save for only personal injury and death) howsoever caused, which may be suffered or injured or which may arise directly or indirectly in respect to the supply of goods or services pursuant to this Agreement or the act, failure or omission of Melb PC).
- Accounts may be suspended without notice to stop transmission of network packets that threaten or have the potential to threaten the security or normal operation of any computer or device on the local or wider network. Such packets are categorised solely by the Internet Management Subcommittee. Users of accounts suspended without notice will be advised by telephone or writing within two working days of the nature of the packets originating from their account. Lifting of the suspension will require the registered account holder to provide evidence of confirmed action being taken to prevent further the transmission of such threatening or potentially threatening packets.
- The Description of Service "Internet Access Agreement" and the services as described on this application form constitute the entire agreement between the partner and neither of them relies on any term, condition, warranty, collateral contract, representation or promise not set out in those parts of these forms.
- Authorised by Melb PC Committee, 1st September 2013

I have read the terms and conditions

Signed.....Dated.....



MELBOURNE PC USER GROUP INC.

ABN 43 196 519 351

(Victorian Association Registration No. A0003293V)

Unit 26, 479 Warrigal Road, Moorabbin Vic 3189 Australia

"Members helping Members" Telephone: (03) 9276 4000

OFFICE 365 PRO PLUS

1 Year Subscription



Word



Excel



PowerPoint



OneNote



Access



Publisher



Outlook

Microsoft Office 365 ProPlus for MelbPC Members

Subscriptions for Microsoft's desktop program suite Office 365 ProPlus are now available to Melbpc members at a reduced rate.

The programs included are; Word, Excel, OneNote, PowerPoint, Outlook, Publisher and Access. Members who take up this offer will be able to install the suite on up to fifteen different devices: 5 computers (PC or Mac), 5 tablets (iOS/Android/Windows) and 5 smartphones (iOS, Android, Windows). The new 2016 versions are available now.

Microsoft Office ProPlus is available to members for an annual subscription, set for the first year and payable by members in advance. (*) **Renewal for each year will reflect Microsoft's current price at the time of renewal.**

After payment members will be able to download the program suite onto their own computers using their Office 365 login details (the same as they already use for email and other cloud services). As long as the subscription is maintained, members will receive updates and upgrades to the latest version of Office.

Our existing Office 365 Enterprise service provides the 'cloud' versions of some Office applications: Word, Excel, PowerPoint and OneNote. These can be used during a login to Office 365 via the web. They do not include all of the features available on the desktop versions. Office 365 ProPlus provides the full versions of those applications, and others not available at in the cloud at all: Outlook, Publisher and Access. (Publisher and Access are not available in the Mac OS X version.) The ProPlus programs can be used when the computer is offline and not connected to the internet, as they are installed directly on the computer (or tablet/ smartphone).



Skype for
Business



InfoPath



OneDrive
for Business

May Calendar

<div>  <div>V3 – updated 23-Apr-2017</div> </div> <h2>SIG & Other Meetings — May-2017</h2>						
Sun	Mon	Tue	Wed	Thu	Fri	Sat
Legend SIG meeting at Melb PC HQ, Moorabbin. Non-Moorabbin meeting. Cancelled Meeting Changed Meeting To be confirmed	1 	2 	3 North East Genealogy SIG **Heidelberg** 10am - 12noon MONTHLY MEETING Melb PC HQ, Moorabbin 7pm – 9:30pm then Supper (WAFFLE) at Fong's 9:35pm	4 Sunbury Daytime SIG New Users 9.30am - 12noon	5 Essendon SIG Main meeting Avondale Heights 9:30am - 12noon Multimedia Home Entertainment SIG Mount Waverley 10am - 12 noon	6
7 	8 Access (database) and Excel SIG Moorabbin 6.30pm - 8.30pm Video Inner East SIG Ashburton 7:30pm - 9:30pm Wyndham SIG General Hoppers Crossing 7.30pm - 9.30pm	9 Investment Tools - WASINT SIG Moorabbin 10.30am - 12.30pm	10 Video Production – Sony SIG Moorabbin 10am - 12 noon Communications SIG Moorabbin 7pm - 9.30pm Microcontroller SIG Moorabbin 7pm - 9.30pm	11 Sunbury Daytime SIG Advanced 9.30am - 12noon North East Daytime SIG **Heidelberg** **9am – 11am** East SIG Blackburn South 7.30pm - 9:30pm	12 Essendon SIG Open Forum Avondale Heights 9:30am - 12noon Hardware SIG Mount Waverley 10am - 12noon Casey SIG Narre Warren 12.30pm - 3pm	13 Linux Workshop – Moorabbin SIG 10:30am - 1:30pm Microcontroller Workshop SIG Moorabbin 12noon - 5pm Raspberry Pi – Moorabbin SIG 2pm - 4pm
14 East Workshop & 3D-Printing SIG Mount Waverley 10am – 2pm Cancelled (due to Mother's Day)	15 Mornington Peninsula SIG General inc Q&A Mornington 9.30am - 12noon Family History Mornington 1:30pm - 4:30pm Northern Suburbs Linux SIG Watsonia 7.30pm - 9.30pm	16 Wyndham SIG Multimedia Hoppers Crossing 7.30pm - 9.30pm	17 North East Android SIG **Heidelberg** **9am – 11am**	18 Sunbury Daytime SIG Main Meeting 9.30am - 12noon Bayside SIG Brighton 10am - 12noon Music SIG Moorabbin 7.30pm - 9.30pm	19 Essendon SIG Varies. Avondale Heights 9:30am – 12noon Digital Images SIG Including Photoshop Mount Waverley 10am - 12noon Melb PC Committee 1pm, Mt Waverley	20 Windows Plus SIG Moorabbin 10am - 12noon
21 Beginners East (BEAST) SIG 10am - 12.30pm MACE (Atari Computers) SIG Moorabbin 10am - 2pm Genealogy East SIG Vermont South 1pm - 3.30pm Macedon Ranges SIG Gisborne 2pm - 4pm	22 	23 Yarra Ranges SIG Kilsyth 9.15am - 12:30pm	24 Video Production – Pinnacle SIG Moorabbin 10:00am – 12:30pm Programming SIG Moorabbin 6:30pm - 9:30pm	25 Sunbury Daytime SIG Maintenance & Linux 9.30am - 12noon	26 Raspberry Pi - Mt Waverley SIG 10am - 12 noon Casey Workshop SIG Narre Warren 12.30 - 3pm PC Update – Articles deadline	27 Microcontroller Workshop SIG Moorabbin 12noon - 5pm
28 Everything Apple SIG Moorabbin 2pm - 4pm Website Design SIG Tutorials Moorabbin 2pm - 4pm Troubleshooting Moorabbin 4pm - 6pm	29 	30 	31 PC Update – Reports deadline	Changes Please advise changes to: calendar-admin@melbpc.org.au	Other SIG (Special Interest Group) information: http://www.melbpc.org.au/interest-groups/ Recent Changes: http://www.melbpc.org.au/interest-groups-resources/sig-changes/	Have A Question Post it on Yammer Yammer: http://yammer.com/melbpc.org.au/