



Published by
Melbourne PC User Group Inc.
Suite 26, Level 1, 479 Warrigal Road
Moorabbin, VIC 3189

Office hours 9.30am-4.30pm (Mon-Friday)

Phone (03) 9276 4000
Email office@melbpc.org.au
ABN: 43 196 519 351
Victorian Association Registration
A0003293V

PC Update Newsletter - Editor: George Skarbek
editorpc@melbpc.org.au

Librarians: Clemens Pratt 9802 5501
cpratt@melbpc.org.au
Choy Lai cplai@melbpc.org.au

Proof Readers:
Tim McQueen

Committee Executive

President	George Skarbek
Vice President	John Hall
Secretary	John Swale
Treasurer	Bill Ford



Melb PC User Group Inc. is a member of the Association of
Personal Computer User Groups

PC Update

October 2017

The Newsletter of Melbourne PC
User Group Inc.

Monthly Meeting Live Stream

Tune in here at 7.00pm on Wed 6th of October to
view the Monthly Meeting live over the Internet.

Test Transmission usually commences at around 6.30pm

<http://tv.melbpc.org.au>

Contents

Editorial.....	2
Photography Competition Results.....	2
President's Report	3
Monthly Meeting.....	3
Users helping users, even when they are not present. ...	4
Random Access.....	5
My First 3D printer by Keith Younger.	5
The HDMI Cable and Connectors.....	9
EAST SIG	10
Northern Suburbs Linux SIG – September 2017.....	11
High end 3D printing site visit.....	14
LIBRARY REPORT: The Carassellos legacy	15
Photographic Competition entries	17
Special Interest Groups.....	18
October Calendar.....	27

Editorial

Photography Competition Results

The judge has awarded the first place to the photo titled, FABER-02752.
It was a clear winner, by a long way.

It represents 19th century technology from the Faber-Castell pencil factory museum in Stein, outside Nuremberg, Germany. It was entered by David Stonier-Gibson Member No 46742



Second place was the photo titled: Opera House Project,
This was submitted by Ron Vinnard, Member 34328

There was very little between the third and fourth place, but in the third place was FABER-02767 by David Stonier-Gibson

Just outside in fourth place, Highly Recommended was Very Early Technology by John Gillies.
This was a photo of the replica of the radio used on the Antarctic base, built from the old plan by John.

The other Highly Recommended images were:
In the dark by Barry Horn.

Technology that is often overlooked and On which computer is my file? were by the Editor who entered them as in the first three weeks of the competition, there was only one other entry. Had either of these two won, the President would have disqualified them.

See the prizewinning images on page 17

Our Statement of Purpose

The purposes of the Association are to conduct on a non-profit basis activities to help members learn and use systems and devices using various technologies, especially computing, software, and communications technology (inc. the Internet and World Wide Web, personal computers & devices), to achieve the following outcomes;

- Advancing computer literacy;
- Advancing education and the exchange of ideas;
- Keeping members up to date on developments in computer and information technology and helping members to exchange information;
- Representing members in public debate in areas of interest including law reform proposals;
- Engaging with similar organisations; and

President's Report

Electricity costs were investigated thoroughly and then were reduced by a significant amount. When the solar panels will be installed shortly the resulting saving will be about \$2,000 per annum.

Promoting our club

As a part of advertising our club 2000 leaflets were printed and distributed by a letterbox drop around the area where the EAST SIG meets. The purpose of this exercise was to let the residents around our meeting place know about MelbPC. As an incentive to attend an \$800 door prize was offered simply to attend.

The result of the effort in designing and printing the A5 leaflets as well as distributing them to the nearby residents resulted in one person attending because of all this effort.

As well as the letterbox drop an email was sent to all financial members who were not on the EAST SIG mailing list but lived either in the adjacent postcode or one postcode removed from the meeting place. This resulted in 15 new members attending.

Despite the cost and effort involved in printing and distributing the leaflets I still believe this has been a very worthwhile exercise. What we have learnt is that spending money on a similar promotion, which included a great door prize, is a waste of effort of the club's money, because less than 0.01% responded to that promotion. Spending a bit of time and effort on the email has had a very significant result.

Member Management System

The contractors are working well and the system testing is also progressing but the date to go live has slipped by another week and we should be operational before mid-October.

Phone system problems

There have been periods when the phone calls to the office and to iHelp were of very poor quality. This is being investigated and several options are being considered to improve the quality and to reduce the cost.

Monthly Meeting

Wednesday 4th of October

At 7.00 pm sharp the meeting will open with our regular Q&A Session. Then we will hear the President's Report.

At 7:30 our speaker will be John Morris. He will cover two software products, **WinDirStat**, a disk usage statistics viewer and clean up tool for various versions of Microsoft Windows and **PrintFriendly** web page print. This software cleans and formats web pages for perfect print experience. **PrintFriendly** removes ads, navigation and web page junk, so you save paper and ink when you print. It's free and easy to use. Perfect to use at home, the office, or whenever you need to print a web page. The hardware that John will show is a jump start pack. It is a device that has **very** many features.

After the break David Stonier-Gibson will be talking to us about one aspect of this technology, robotics. In particular, he will be discussing the planning and design that is taking place for a robotics course for young people of around 13 years

of age. David is working with a (very much!) younger man, Amir Fouladvandi, who combines a degree in robotics with a strong desire to help young people discover their passion while they are young.

David will discuss the challenges of designing a teaching program that engages young people of the "screen generation" quickly, making it fun while still imparting useful skills. He will also describe the physical "robot" that is being developed for the course, with design features aimed at highlighting key concepts. This wheeled robot is projected to cost about \$25, compared to \$150 for a commercial unit with less learning potential. Naturally there will be a live demo of the proof of concept prototype(s).

One of the visions for this course is to invite a parent (or grandparent!) to attend with their child, and share in the fun and learning. The absolute intention is also that "students" get to take home their robots to show to their families, which is why the target cost of the device is as low as possible.

David Stonier-Gibson has been coordinating the Microcontroller SIG for the last 14 months. That SIG is believed to be the largest source of new MelbPC members, and holds its monthly meetings 7pm 2nd Wednesday of each month at HQ. David is a retired electronics engineer who has specialised in industrial embedded microprocessor applications for 45 or more years. He was one of Australia's pioneers in the field, and founder of Australia's leading maker of embedded control electronics.

Then George Skarbek will present a short section on What's New.

The meeting will close at 9:30 pm.

After the meeting, we get together for WAFFLE@FONG. The WAFFLE SIG ("Wine And Fine Food Lovers' Event") will be at FONG's Chinese Restaurant, 725 Centre Rd Bentleigh East, Corner of Francesco Street, Melways: 77: J-1

If you can't make it to Moorabbin, be sure to tune in to <http://tv.melbpc.org.au> for a live broadcast of the meeting. Test transmission usually begins at around 6.30pm

Users helping users, even when they are not present.

Submitted by Charles Adams.

The question was asked at the monthly meeting "how does one get the latest version of Skype to activate visibly automatically after Windows boot?"

No one had experienced the problem and no one could help.

But, the meeting is live on the web, and Leighton, watching, knew the answer. Having solved this problem with the radical latest version, he took the initiative, called George and George remembered who asked the question and sent my name and phone number Leighton in iHelp and Leighton called.

The answer was very very simple. Skype, now owned by MS though domiciled in Luxemburg, is now integrated into Windows 10, so that it comes on automatically with the operating system. But it is still necessary to remember to get it on screen if you want to see who else is active at any time. When you get it on screen the green indicator confirms that you are live.

Many thanks to Users (particularly Leighton)

Random Access

John Swale reports on Questions and Answers from the opening session of the September monthly meeting and from members' written submissions.

Questions and Answers

Q: In Windows 10 I found it difficult to change to a different Wi-Fi connection. When I went to a different location I could not find anywhere in settings to make the change. I clicked the icon in the Task Bar near the clock but it did not show all the available Wi-Fi access points. It suggested going to connection settings. When I went there, it took me back to the list. So was going around in circles. I tried the Network Trouble shooter but that also went into the loop.

A: As no one else is having any problems, you should check that your Wi-Fi card is not faulty.

Q: I have been using Macrium Reflect to do my backups. How to I check that the backup has been successful?

A: Double click on the backup file and Reflect will mount the image as another drive. You can then open or extract some files. Reflect can be set to do a check after it has finished the backup. This will take some time. To do a more thorough test you need to compare the two files. You can use the DOS command FC (file compare) to do a byte by byte check on a few of the critical files.

Q: I'm having a problem with the latest update to Skype For Business. It won't automatically start at boot time. Where can I find the setting to make this happen?

A: Create a shortcut to the program in the Start folder.

Q: I have just switched to Firefox and I keep getting errors indicating that I don't have Flash player installed.

A: There are some risks with Flash Player and it is best to not have it running all the time. Set it to start when needed and not at boot time. Most developers are moving away from Flash.

Q: I am running Cinnamon Mint 18.2 version of Linux and I have lost sound. It comes through the headphones but not the attached speakers.

A: As no one here has an answer, you should try asking the question in Yammer or ring Dial Help as there are knowledgeable people in both areas.

My First 3D printer by Keith Younger.

I have been interested in computer controlled machines for many years and as my home in America has a large workshop in the basement I have acquired some interesting items over the last 3 years. (CNC controlled router and a little metal lathe that I am working on converting to CNC)

My reason for going into 3d printing was to make forms to use in lost wax metal castings. PLA will perform this function well and allow me to make custom molds to cast silver and gold components for the handmade pens that I produce as my other hobby.

Prices for 3D printers have been falling for the last year or so, so I decided to take the plunge on an entry level machine. Research over several weeks on the internet lead me to the CR10 by Creality.

There are several vendors for these machines with varying reputations and prices being charged. The general consensus is to avoid Gearbest and buy from either Banggood, Tinymachines or Amazon. There are a couple of CR10 Facebook groups that give excellent examples of why this is so.

Prices fluctuate on Banggood from around US\$375 to US\$425 (seemingly with Stock levels) and coupons for discounts of between 10 and 20% are not difficult to find online.

My unit was shipped from their American warehouse but for buyers in Australia shipping direct from China would probably be the cheapest option.

Delivery by Fedex ground took 6 days from when I placed the order.

I unboxed the unit and assembled it on a small table in my office. The unit came with a comprehensive tool kit and some spare parts.



There are several YouTube videos on how to assemble and fine-tune the unit. This is good because the instructions provided are shockingly brief.

A couple of things that I took note of from the forums were to remove the decorative plastic inserts from the base before bolting the upright arch into place as they can prevent the arch from seating firmly on the base which is essential to get good prints. They can be replaced after construction is complete after trimming the length slightly. Secondly make sure the voltage selector switch on the right side of the control box is set to the appropriate setting, A mistake

here will destroy the controller. After assembly is complete careful attention to levelling the bed makes the initial printing set-up easy. The forums also suggested replacing the sheet of glass with a 30 x 30 cm mirror tile from Ikea or a hardware store as it would be flatter than the glass. I tested my glass with a straight edge from side to side and diagonally and it seemed flat to me so I did not do this.

Once the unit is set up it is time to use it to print some useful parts for improving the performance of the unit. Amazing a machine that can be used to improve itself.

The files for these can be down loaded from thingiverse.com at no charge. These should include Cable strain relief, Extruder cover/filament guide, and larger bed levelling knobs.

www.thingiverse.com/thing:2186203
<https://www.thingiverse.com/thing:2456930>
<https://www.thingiverse.com/thing:2462249>

There are many other upgrades possible but these three are almost considered essential by most users.



The steps to go from 3d model to printed item are fairly simple but to do them we need some software.

For designing in 3D something like Fusion360 or sketchup is needed. Sketchup is free but I found Fusion360 to be easier to use and was able to get a free copy for student use via my stepdaughter who is still at school. Once designed the models should be exported as STI format some slicers will accept other formats but this appears to be the format that is becoming the de-facto standard.

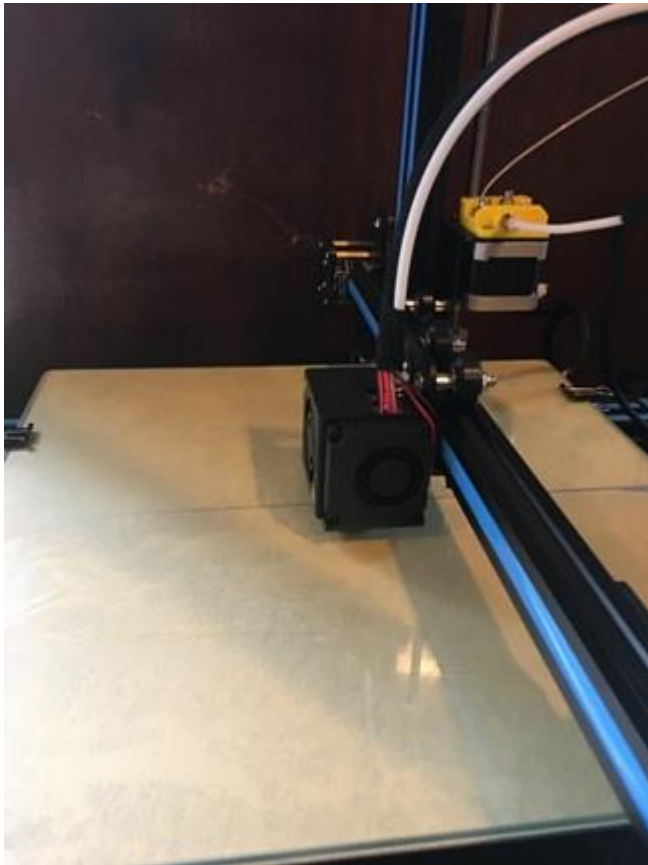
Files from Thingiverse and other free repositories are usually in STI format already.

Once in STI format the file needs to be imported into a “slicer program” That produces the gcode that actual drives the printer. Cura is a free one that is supplied with the instrument but the version supplied is seriously out of date. The current version is 2.7 and is a free download from the Cura website. Cura is open source and I have used it for a while with no issues so far. Windows, Linux and Mac versions are available Other freeware is “Slicer” and links to others are freely available on the forums. Simplify3D is supposed to be much better but it is \$140 and nobody has been able to tell me how it is better.

For Cura (and other slicers) you have to create a profile which is a listing of the various parameters of your printer. Again these are freely passed around within the forums with each having their supporters saying that this or that version is superior. I choose the most basic one to use as a learning project thinking that I would modify it as I went but the finished models exhibit nothing that needs improvement to my eyes. The profiles set the size of the bed, thickness of the layers deposited, thickness of the walls of the outer and inner shell, the percentage of infill (the webbing between the inner and outer shell) and the temperature that the extruder and heated bed (which the model is formed on) are set at. These differ for the various filaments that you can print with and within filaments types by manufacturer. A good starting filament is PLA but once you have developed the basic skills there are a number of others including ABS, polycarbonate and nylon. Some of these need the printer to be further modified with hotter extruders and harder nozzles to prevent abrasion.



The sliced model is copied onto the microSD card for use in the printer. Doing it this way frees up your computer and isolates the printer from any glitches from the PC. (the prints can take many hours to produce and if the computer goes into hibernation the print will be ruined). I am going to buy an SD extender cable from amazon as the fitting in the printer seems quite fragile and this will prevent it breaking and disabling the printer



I coat the glass bed with a light spray of hairspray after cleaning it with metho to remove fingerprints to allow the model to adhere to it firmly.

The CR10 can be run from the SD card. The controls on the printer itself consist of a screen and a rotating knob that you press to select the option that you want.

Rotate the knob until the highlight is in the line with the position co-ordinates and press it. From the next menu select print from SD card. Select the file to print and press the knob again.

The unit starts by homing all three axis before heating the bed to the set temperature. Once the set temperature is reached the nozzle begins heating. Once that is achieved the printing begins.

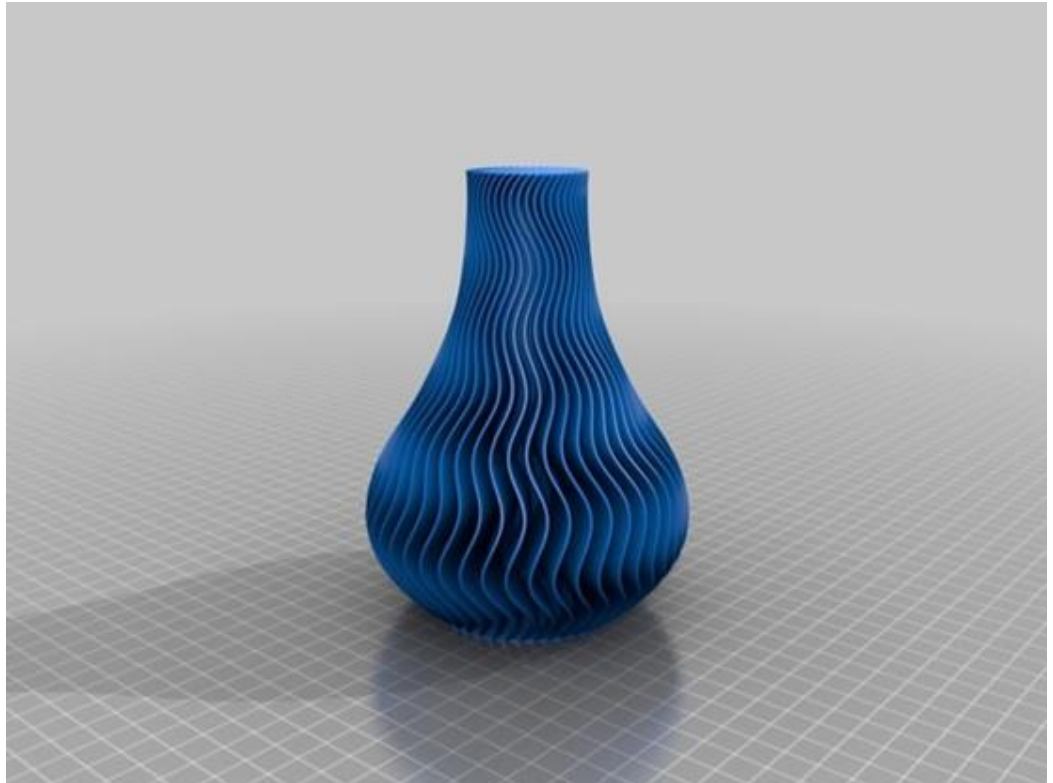
I watch the first few minutes to make sure that all is well and the print is sticking to the glass bed before walking away. Printing is not fast and even a small part like the strain relief shown below can take 40 minutes to an hour to make,

This strain relief was the first thing I printed and I included a raft on the base to ensure that the piece stuck to the bed. The raft which is the thin film at the base just peels off the part once it is released from the bed. I found that it was not necessary for many models and it makes prying the part off the bed more difficult.



Once you have printed the essential upgrades and installed them it is time to start making things. There are literally hundreds of thousands of free designs to choose from. About the third thing I made was a vase that I filled with roses to give to the boss as an apology for spending so much time in the basement while getting this all working. Vases made with PLA needed to be sealed internally to make them watertight

have seen units that have been fitted with a Raspberry PI as a controller that is then Wi-Fi linked back to the main PC. These units run OctoPi and can be fitted with a webcam allowing monitoring of the printing in real time over the internet as well as remote control of the printer. This is a project for the future when I have more time on my hands.



The HDMI Cable and Connectors

Jim Cerny, Forum Leader, Sarasota Technology User's Group, FL

As technology changes, hopefully for the better, more and more devices are available to us. For most of us who use technology for personal and home use, we would like to connect some devices to our TVs to enjoy the big screen video and great sound experience. The latest connection cable type that does this for us is HDMI which stands for "High Definition Media Interface". The cable connectors (the standard size and a mini size) are shown in the photo. They have a shape to them that allows them to be inserted only one way, so do not force it into the port, try turning it over (180 degrees) and try again.

The purpose of HDMI is to replace different kinds of connectors and cables with one type that, hopefully, can handle all your device connections. Do you remember the old days when there were separate audio/stereo and video cables? Today almost all of the newer devices (laptops, TV's, DVD players, etc.) will come with at least one HDMI connector port. The older style connectors may also be present, but if possible, HDMI should be your first choice to make those connections.

Your TV remote control will have a button labeled "input", and when you press this button different input options (that is, what is coming INTO your TV) will be displayed and allow you to select which one you want. One option will be "cable" which means your TV will show your cable programs – the cable you pay for each month. But other choices will include one or more HDMI inputs, usually labeled HDMI-1, HDMI-2, etc. If you have more than one device connected to your TV it is best for each device to connect to its own HDMI port on the back of the TV. You select which of the inputs you want to view on your TV by using the "input" button on your remote. Of course, there must be something (video and sound) coming into that port to the TV for you to see anything. For example, you may have a DVD player connected to HDMI-1, but if your DVD player is not on and playing something, you will not see anything on your TV when you select that input option. If you have some older devices which may not have an HDMI connector, you can purchase a converter device to allow it to connect.

Lastly, I am always amazed by the cost of cables – after all, they are just wires with plugs on the ends, right? If you checkout the prices of cables at stores and the prices on the internet, you will be shocked at the high prices they can charge for these things. Yes, some cables are higher quality than others and may come with better “shielding” to protect the signal, but most prices are much too high for what you get. My advice would be to shop on-line and get the cheapest cable that meets your needs, but make sure you can return it if you are not happy with it. If it doesn’t work for you, then return it and move up to the next higher-priced (and hopefully better quality) cable.



You can find out more about HDMI cables and connectors by asking Google, of course. But connecting them is easy, even for us amateurs.

EAST SIG

The September meeting was a special event. EAST SIG made a full colour special advertising flyer and had 2.000 maildrops the meeting. This invitation included a \$800 tablet as a door prize. Unfortunately, it brought only one new members to the meeting.

Mail outs to existing members in two adjacent postcodes resulted 15 new visitors attending. There were four presentations so that everyone would have something to interest them.



We hope that most of the new attendees will come next month.

Northern Suburbs Linux SIG – September 2017

by Paul Addis

It has become “normal” for our meetings to start with the Linux News compiled by Nick Vespo, and this month’s meeting was no exception. The news was a presentation by a young-ish George Hotz, an entrepreneur who has founded a company called Comma.ai dedicated to move forward the trend towards self-driving cars.

Hotz achieved early fame/notoriety by hacking the Apple iPhone and Sony’s Playstation 3 (at the age of 17). He had planned to ship hardware to support self-driving cars, but the regulator intervened and forbade that. Now he provides plans for the hardware that can be assembled from components available via the Internet, and software that can be downloaded from his company.

The company sells a device (Panda) that collects data about how cars are driven, and it has accumulated more than 50TB of such data, using the data to teach the software about driving. Currently the hardware/software is aimed at the control of Honda/Accura vehicles such as the Civic. But it can be adapted to work with other vehicles, for example the Toyota Prius.

The software will be periodically updated to benefit from new experience input from the continuing data gathering activity.

There are videos on the Internet of user experience with hardware/software, with users describing it as “good as Tesla’s Autopilot”.

Hotz claims to not want to build self-driving cars, but he wants to own the data built up from the driving experience of cars being monitored by his devices. The data gathering device costs \$US88, and the parts for self-driving cost only hundreds of dollars and not the many thousands that others will be asking for the self-driving component of their vehicles.

The Open Forum session is aimed at using the group to help with problems posed, and to share words of wisdom from people who have special knowledge and experience.

A question was posed about a file that could not be edited. The problem seems to be related to the length of the file name, including the directory names in its path. The solution was to copy the file to a high-level directory, e.g. /tmp, and edit it from there.

One issue that might be experienced by those using the Long Term Support versions of Ubuntu is that the kernel level remains the same for the whole period. Canonical now provides updated kernel versions for the LTS versions. They can be found in the repository using the search term HWE for Hardware Enablement.

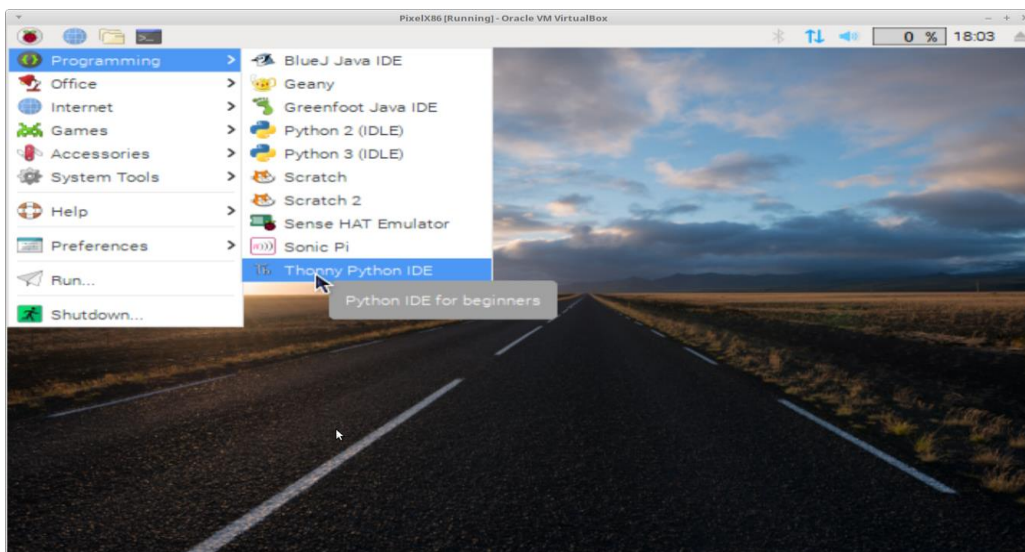
The evening’s main presentation was again by David Hatton, and it is the latest in his series of Random Bytes.

The first topic (not chosen at random) was the Raspberry Pi operating system version to run on Intel X86 processors (as used in Personal Computers), rather than the ARM processors used in the Rpi. This particular configuration is generally referred to as Debian with the Raspberry Pi desktop.



Raspberry Pi Boot Screen on a x86 PC.

While not all Raspberry Pi applications are supported, the majority are, and the X86 version proves to be a good and useful version of the Raspbian operating system. David showed some of the items such as Thonny Python which are unique to Raspbian.



The Raspbian X86 Desktop showing the Programming Menu

The second (and last) topic was the Draw program in the Libre Office suite. The aim of the first exercise was to create a simple diagram to represent the database fields and relationships between magazines and the articles in a particular magazine.

After opening a new Draw window, a text box was opened, and some text typed in complete a diagram heading. A new box was created with the default background fill colour of medium blue. Then lines were drawn around the perimeter of the text box.

The fill colour was changed to white, and some vertical lines added to create a table layout by drawing a vertical line inside the box and copying the result several times. The completed item was duplicated using copy and paste and two more vertical lines added. The table diagrams then had field names added to complete the table descriptions.

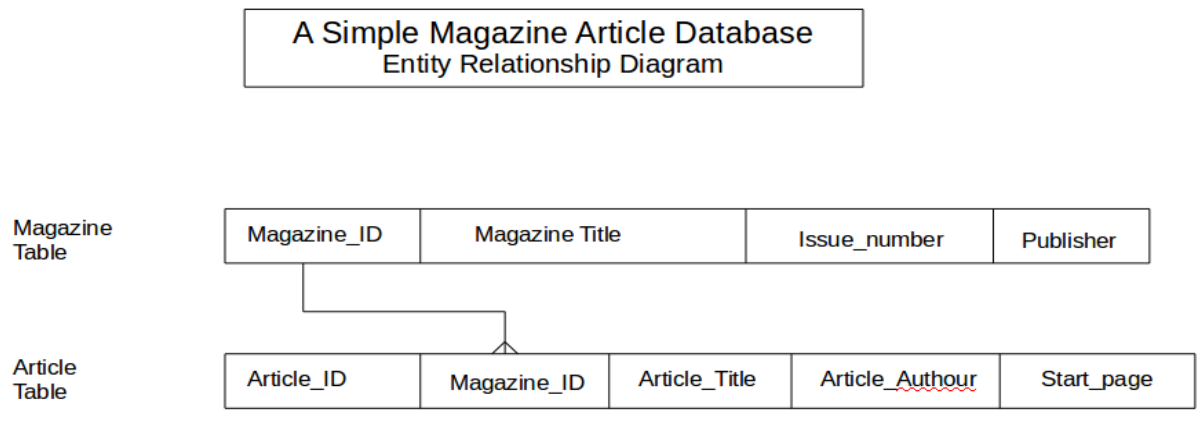


Figure 1 - Using LibreOffice Draw for an ER Diagram.

The main relationship was indicated by drawing a connecting line between the magazine and article layout diagrams. A simple, visual way of showing the relationships - see Figure 1.

A second short exercise was to mock up the design of a web page.

This was quickly done by creating a box of text at the top, a larger, full width box below, into which a picture was inserted.

Then some smaller boxes were created to represent action buttons, and a further large one was filled with text copied from the Writer program of the suite.

The result was a simple version of the web page design created in a short time and without the use of specialist tools ready for further development - see screenshot below ...



Another very worthwhile and entertaining evening for the attendees.

High end 3D printing site visit

By David Stonier-Gibson, Microcontroller SIG coordinator

On October 11, the Microcontroller SIG will be departing from its usually meeting format and making a site visit to Monash Centre for Additive Manufacturing (MCAM).

"Additive Manufacturing" is a fancy name for 3D printing, and the machines at MCAM are certainly fancy. They have the world's largest metal 3D printer, which can print steel, titanium, aluminium or a mixture. They 3D printed the world's first complete jet engine!



Naturally all MelbPC members are welcome to this unique event. If you want to come could you please RSVP on our MeetUp page <https://www.meetup.com/microcontrollergroup/events/243380503/> as I have to manage numbers.

LIBRARY REPORT: The Carassellos legacy

Clemens Pratt, librarian, 9802 5501, cpratt@melbpc.org.au
 Choy Lai, assistant librarian, cplai@melbpc.org.au

Former member and volunteer John Carassellos, who previously donated many books from his own holdings, has made a further donation which includes not only books but a number of CD/DVDs. The older discs are being offered "FREE TO A GOOD HOME" and are on display on the table in the library. The following more recent discs have been catalogued and placed on shelves among the books: they are available for loan in the usual way: just write the details in the library register.

IOO-32: Microsoft Office Enterprise 2007 (DVD including Word, Excel, PowerPoint, Outlook, Publisher, Access, OneNote, InfoPath and Groove)

DV-86: Adobe Creative Suite 4 (DVD including InDesign, Photoshop, Illustrator, Acrobat 9 Pro, Flash Professional, Dreamweaver, Fireworks, Contribute, After Effects, Adobe Premium Pro, Soundbooth, Adobe OnLocation, Encore, Adobe Bridge, Adobe Device Central, Dynamic Link, and Version Cue - 2008)

DV-87: Adobe CS4 Getting Started (DVD: Basic Training on 11 Apps: InDesign, Photoshop, Illustrator, Acrobat 9 Pro, Flash, Dreamweaver, After Effects, Adobe Premiere, Soundbooth, Encore, Fireworks – 2008, 11.5 hours)

CO-68: Telstra Victorian Tech Savvy Seniors Training DVDs (2xDVDs - 2014)

OPS-17: Windows 7 for Dummies, author Andy Rathbone (DVD playing 2 hours: “step-by-step instructions that walk you through Windows and show you just what to do!”)

IOO-33: Microsoft Office 2010 for Dummies, author Wallace Wang (DVD playing 2½ hours: “step-by-step instructions to help you harness the power of Office 2010!”)

There are still some hard copy publications on display in the library “FREE TO A GOOD HOME”. Please help yourselves if you can make use of any. After a month or so those left will be discarded to make way for a further batch.
Clemens Pratt, librarian.

Photographic Competition entries



The winning entry by David Stonier-Gibson is shown below on the left and third prize on the right. The Second prize photo by Ron Vinnard is shown below.



Special Interest Groups

SIG Meetings & Contact Details

Special Interest Groups

Data Source: data-source for SIG-List

Updated: 23-Sep-2017 - 12:04

Amendments: Please advise changes/corrections to:
[calendar-admin@melbpc.org.au/](mailto:calendar-admin@melbpc.org.au)

Recent changes are at:

<http://www.melbpc.org.au/interest-groups-resources/sig-changes/>

Access (database) and Excel

Date Jan	No Meeting
Feb-Nov	Second Mon of month (inc. Public Holidays)
Dec	Second Mon of month
Time	6:30pm - 8:30pm
Email	access@melbpc.org.au
Location	Melb PC HQ, Level 1, 479 Warrigal Rd, Moorabbin Melway:78.D8
Convenor(s)	Craig Evans craig_evans@racv.com.au

Bayside

Date Jan	Third Thu of month
Feb-Nov	Third Thu of month
Dec	Third Thu of month
Time	10am - 12noon
Email	bayside@melbpc.org.au
Location	St Stephens Church Hall, 111 North Road (cnr Cochrane St), Brighton Melway:67.F7
Convenor(s)	Peter Carpenter - 9596 3441 Brian Fergie Les Johnston

Beginners East (BEAST)

Date Jan	No Meeting
Feb-Nov	Third Sun of month
Dec	Second Sun of month
Time	10am - 12:30pm
Email	beast@melbpc.org.au
Location	Vermont South Community Centre, 1 Karobran Drive, Vermont South Melway:62.G7
Convenor(s)	Dave Botherway

Casey

Date Jan	No Meeting
Feb-Nov	Second Fri of month
Dec	Second Fri of month. (Christmas function - check location/time etc with Convenor)
Time	1pm - 3:30pm
Location	Beaconsfield Neighbourhood Centre, 8 O'Neil Road, Beaconsfield Melway:214.A1
Convenor(s)	Jan Whitaker - 9705 9009 jwhit@janwhitaker.com Jan Weiner - 9796 2807 wei@westnet.com.au

Casey Workshop

Date Jan	No Meeting
Feb-Nov	Fourth Fri of month
Dec	No Meeting
Time	1pm - 3:30pm
Location	Beaconsfield Neighbourhood Centre, 8 O'Neil Road, Beaconsfield Melway:214.A1
Convenor(s)	Jan Weiner - 9796 2807 wei@westnet.com.au Jan Whitaker - 9705 9009 jwhit@janwhitaker.com

Communications

Date Jan	No Meeting
Feb-Nov	Second Wed of month
Dec	Second Wed of month
Time	7 - 9:30pm
Email	phil@melbpc.org.au
Location	Melb PC HQ, Level 1, 479 Warrigal Rd, Moorabbin Melway:78.D8
Convenor(s)	Phil Lew - 0418 567 019

Digital Images

Date Jan	Third Fri of month
Feb-Nov	Third Fri of month
Dec	No Meeting
Time	10am - 12noon
Location	Wadham House, 52 Wadham Parade, Mount Waverley Melway:61.E12
Convenor(s)	Ian Bock - 9807 3701 bockey@melbpc.org.au

East

Date Jan	No Meeting
Feb-Dec	Second Thu of month
Time	7:30pm - 9:30pm
Email	east@melbpc.org.au
Location	Eley Park Community Centre, 87 Eley Rd, Blackburn South Melway:61.H5
Convenor(s)	Paul Woolard - 9877 1059 Ian Dewhurst - 0438 480 500

East Workshop & 3D Printing

Date Jan	No Meeting
Feb-Nov	Second Sun of month. NO meeting in May - Mother's Day.
Dec	Second Sun of month
Time	10am - 2pm
Email	eastwsh@melbpc.org.au
Location	Wadham House, 52 Wadham Parade, Mount Waverley Melway:61.E12
Convenor(s)	Paul Woolard - 0417 566 209 pwoolard@melbpc.org.au John Swale (3D printing) - 0417 530 766

Essendon - Main meeting

Date Jan	No Meeting
Feb-Nov	First Fri of month
Dec	No Meeting
Time	9:30am - 12noon
Email	essendon@melbpc.org.au
Location	Nancye Kirchner Neighbourhood Centre, Doyle Street (corner Somerset St), Avondale Heights Melway:27.D6
Convenor(s)	John Guegan - 9317 7114

Essendon - Open Forum

Date Jan	No Meeting
Feb-Nov	Second Fri of month
Dec	Second Fri of month. (Christmas Function, 10:30am)
Time	9:30am - 12noon
Email	essendon@melbpc.org.au
Location	Nancye Kirchner Neighbourhood Centre, Doyle Street (corner Somerset St), Avondale Heights Melway:27.D6
Convenor(s)	John Guegan - 9317 7114

Essendon - Varies

Date Dec + Jan No Meeting

Feb-Nov	Third Fri of month
Time	9:30am - 12noon
Email	essendon@melbpc.org.au
Location	Nancye Kirchner Neighbourhood Centre, Doyle Street (corner Somerset St), Avondale Heights Melway:27.D6
Convenor(s)	John Guegan - 9317 7114

Everything Apple

Date Jan	No Meeting
Feb-Nov	Fourth Sun of month
Dec	No Meeting
Time	2pm - 4pm
Email	everything-apple@ausom.net.au
Location	Melb PC HQ, Level 1, 479 Warrigal Rd, Moorabbin Melway:78.D8
Convenor(s)	Julie Ackland Peter Emery

Genealogy East

Date Jan	No Meeting
Feb-Nov	Third Sun of month
Dec	Second Sun of month
Time	1pm - 3:30pm
Email	geneast@melbpc.org.au
Location	Vermont South Community Centre, 1 Karobran Drive, Vermont South Melway:62.G7
Convenor(s)	Denis Street

Hardware

Date Jan	No Meeting
Feb-Nov	Second Fri of month
Dec	Second Fri of month
Time	10am - 12noon
Location	Wadham House, 52 Wadham Parade, Mount Waverley Melway:61.E12
Convenor(s)	Kelvin Cording - 9438 1047 kcording@bigpond.net.au

iHelp

Date Jan	Approximately 6 monthly
Feb-Nov	Approximately 6 monthly
Dec	Approximately 6 monthly
Time	7pm - 9pm
Email	ihelp@melbpc.org.au
Location	Melb PC HQ, Level 1, 479 Warrigal Rd, Moorabbin Melway:78.D8
Convenor(s)	Dave Simpson

Investment Tools - WASINT

Date Jan No Meeting
Feb-Nov Second Tue of month
Dec Second Tue of month
Time 10:30am - 12:30pm
Email wasint@melbpc.org.au
Location Melb PC HQ, Level 1, 479 Warrigal Rd,
Moorabbin Melway:78.D8
Convenor(s) Richard Solly

Linux Workshop - Moorabbin

Date Jan No Meeting
Feb-Nov Second Sat of month
Dec Second Sat of month
Time 10:30am - 1:30pm
Email linuxworkshop@melbpc.org.au
Location Melb PC HQ, Level 1, 479 Warrigal Rd,
Moorabbin Melway:78.D8
Convenor(s) David Hatton

MACE (Atari Computers)

Date Jan Third Sun - BBQ - check with
Convenor for location
Feb-Nov Third Sun of month
Dec Third Sun of month
Time 10am - 2pm
Email maceatari@gmail.com
Location Melb PC HQ, Level 1, 479 Warrigal Rd,
Moorabbin Melway:78.D8
Convenor(s) Andrew Boschan
andrewbosc@gmail.com

Microcontroller

Date Jan Second Wed of month
Feb-Nov Second Wed of month
Dec Second Wed of month
Time 7pm - 9:30pm
Email microcontroller@melbpc.org.au
Location Melb PC HQ, Level 1, 479 Warrigal Rd,
Moorabbin Melway:78.D8
Convenor(s) Phil Lew - 0418 567 019
phil@melbpc.org.au
John Hollow - 0417 031 164

Microcontroller Workshop

Date Jan Second & Fourth Sat of Jan.
Feb-Nov Second & Fourth Sat of month.
Dec Second Sat (only) of Dec.
Time 12noon - 5pm

Email microcontroller-workshop@melbpc.org.au
Location Melb PC HQ, Level 1, 479 Warrigal Rd,
Moorabbin Melway:78.D8
Convenor(s) John Shirt - 0409 568 267
Rob Brown - 0419 285 806

Mornington Peninsula - General, Q&A

Date Jan Third Mon of month
Feb-Nov Third Mon of month
Dec No Meeting
Time 9:30am - 12noon
Email peninsula@melbpc.org.au
Location Mornington Community Information and
Support Centre, 320 Main St,
Mornington Melway:104.E12
Convenor(s) Terry Said - 0427 750 327
dulnain@gmail.com
Ian Thomson
iaroth@netspace.net.au
Colin Ackehurst

Mornington Peninsula - Family History

Date Jan Third Mon of month
Feb-Nov Third Mon of month
Dec No Meeting
Time 1:30pm - 4:30pm
Email peninsula@melbpc.org.au
Location Mornington Community Information and
Support Centre, 320 Main St,
Mornington Melway:104.E12
Convenor(s) Colin Ackehurst
colin_a_ackehurst@bigpond.com

Mornington Pen. Family History: Adv.DNA

Date Jan last Wed of month (5th Wed if there
is one, otherwise 4th Wed)
Feb-Nov last Wed of month (5th Wed if there
is one, otherwise 4th Wed)
Dec No Meeting
Time 2pm - 4pm
Email peninsula@melbpc.org.au
Location Mornington Community Information and
Support Centre, 320 Main St,
Mornington Melway:104.E12
Convenor(s) Colin Ackehurst
colin_a_ackehurst@bigpond.com

Multimedia Home Entertainment

Date Jan No Meeting
Feb-Nov First Fri of month
Dec First Fri of month
Time 10am - 12noon
Email MHE@melbpc.org.au
Location Wadham House, 52 Wadham Parade,
Mount Waverley Melway:61.E12
Convenor(s) John Hall - 9803 2731
johnhall@melbpc.org.au
Kelvin Cording - 9438 1047
kcording@bigpond.net.au

Music

Date Jan - Nov Third Thu of month
Dec No Meeting
Time 7:30pm - 9:30pm
Email music@melbpc.org.au
Location Melb PC HQ, Level 1, 479 Warrigal Rd,
Moorabbin Melway:78.D8
Convenor(s) Bill Sakell
John Shirt - 0409 568 267

North East Android

Date Jan No Meeting
Feb-Nov Third Wed of month
Dec Second Wed of Dec - join with North
East Daytime SIG - end-of-year
breakup
Time 10am - 12noon
Email ne-android@melbpc.org.au
Location Hawdon Street Community Hall,
80 Hawdon Street,
Heidelberg Melway:32.A4
Convenor(s) Colin Lampshire
9857 5372 or 0413 640 408
lampshir@melbpc.org.au
Kelvin Cording - 9438 1047

North East Daytime and Photography

Date Jan No Meeting
Feb-Nov Second Wed of month
Dec Second Wed of month
Time 10am - 12noon
Email neday@melbpc.org.au
Location Hawdon Street Community Hall,
80 Hawdon Street,
Heidelberg Melway:32.A4
Convenor(s) Colin Lampshire
9857 5372 or 0413 640 408
lampshir@melbpc.org.au

North East Genealogy

Date Jan No Meeting
Feb-Nov First Wed of month
Dec First Wed of month
Time 10am - 12noon
Email negen@melbpc.org.au
Location Hawdon Street Community Hall,
80 Hawdon Street,
Heidelberg Melway:32.A4
Convenor(s) Lynn. Hammet
lynnhammet@gmail.com

Northern Suburbs Linux

Date Jan Third Mon of month
Feb-Nov Third Mon of month
Dec No Meeting
Time 7:30pm - 9:30pm
Email nsliq@melbpc.org.au
Location Community Meeting Room, Watsonia
Library, 4 Ibbotson St,
Watsonia Melway:20.E4
Convenor(s) David Hatton
Stephen Davidson

Online

Date Jan Available online at any time
Feb-Nov Available online at any time
Dec Available online at any time
Time Available online at any time
Email kazkev@melbpc.org.au
Location Melb PC Yammer online forum
Convenor(s) Kevin Martin
Evening only - 5964 7627
or 0407 343 162

Programming

Date Jan Suspended, meet only on request.
Feb-Nov Suspended, meet only on request.
Dec Suspended, meet only on request.
Time By arrangement
Email programming@melbpc.org.au
Location Melb PC HQ, Level 1, 479 Warrigal Rd,
Moorabbin Melway:78.D8
Convenor(s) John Viney

Raspberry Pi - Moorabbin

Date Jan Second Sat of month
Feb-Nov Second Sat of month
Dec Second Sat of month

Time 2pm - 4pm
 Email raspi-moorabbin@melbpc.org.au
 Location Melb PC HQ, Level 1, 479 Warrigal Rd,
Moorabbin Melway:78.D8
 Convenor(s) Mohan Gupta - 0421-214-081
 Rob Brown - 0419 285 806

Raspberry Pi - Mt Waverley

Date Jan - Nov Fourth Fri of month
Dec No Meeting
 Time 10am - 12noon
 Email raspi@melbpc.org.au
 Location Wadham House, 52 Wadham Parade,
Mount Waverley Melway:61.E12
 Convenor(s) John Hall - 9803 2731
johnhall@melbpc.org.au
 Lance Lloyd - 9884 5559
lancelloyd@melbpc.org.au

Sunbury Daytime - New Users

Date Jan No Meeting
Feb-Nov First Thu of month
Dec First Thu of month
 Time 9:30am - 12noon
 Email sunburydaytime@gmail.com
 Location Sunbury Senior Citizens Centre (back
 room), 8 O'Shannassy Street,
Sunbury Melway:382.E4
 Convenor(s) Kevin Hale - 9740 5786

Sunbury Daytime - Advanced

Date Jan No Meeting
Feb-Nov Second Thu of month
Dec Second Thu of month
 Time 9:30am - 12noon
 Email sunburydaytime@gmail.com
 Location Sunbury Senior Citizens Centre (back
 room), 8 O'Shannassy Street,
Sunbury Melway:382.E4
 Convenor(s) Kevin Hale - 9740 5786

Sunbury Daytime - Main Meeting

Date Jan No Meeting
Feb-Nov Third Thu of month
Dec No Meeting
 Time 9:30am - 12noon
 Email sunburydaytime@gmail.com
 Location Sunbury Senior Citizens Centre (back
 room), 8 O'Shannassy Street,
Sunbury Melway:382.E4
 Convenor(s) Kevin Hale - 9740 5786

Sunbury Daytime - Maintenance & Linux

Date Jan No Meeting
Feb-Nov Fourth Thu and Fifth Thu of month.
Dec No Meeting
 Time 9:30am - 12noon
 Email sunburydaytime@gmail.com
 Location Sunbury Senior Citizens Centre (back
 room), 8 O'Shannassy Street,
Sunbury Melway:382.E4
 Convenor(s) Kevin Hale - 9740 5786

Video Inner East

Date Jan No Meeting
Feb-Nov Second Mon of month
Dec Second Mon of month
 Time 7:30pm - 9:30pm
 Email rbalse@tpg.com.au
 Location Copland Room, Ashburton Library, 154
 High St,
Ashburton Melway:60.C9
 Convenor(s) Richard Balsillie - 9809 4116

Video Production - Pinnacle

Date Jan Fourth Wed of month
Feb-Nov Fourth Wed of month
Dec No Meeting
 Time 10:00am - 12:30pm
 Location Melb PC HQ, Level 1, 479 Warrigal Rd,
Moorabbin Melway:78.D8
 Convenor(s) Wayne Spicer - (03) 5971 1617
spisawn@optusnet.com.au
 Tony Pickup - 9878 0706
tonypickup@optusnet.com.au

Video Production - Sony

Date Jan Second Wed of month
Feb-Nov Second Wed of month
Dec Second Wed of month
 Time 10am - 12noon
 Location Melb PC HQ, Level 1, 479 Warrigal Rd,
Moorabbin Melway:78.D8
 Convenor(s) Roger Wragg
rdwragg@fastmail.fm
 Bob Flack

WAFFLE - wine & fine food lovers event

Date Jan	No Meeting
Feb-Nov	First Wed of month
Dec	First Wed of month
Time	9:35pm (after the Monthly Meeting)
Email	phil@melbpc.org.au
Location	Fong's Chinese Restaurant, 725 Centre Rd (cnr Francesco St), Bentleigh East Melway:77.J1
Convenor(s)	Phil Lew - 0418 567 019 Tom Rado - 9807 4072

Wyndham PC Users/Multimedia

Date Jan	No Meeting
Feb-Nov	Third Tue of month
Dec	Second Mon of Dec for break-up party.
Time	7:30pm - 9:30pm
Location	Room 3, Central Park Community Centre, 80 Lonsdale Circuit (off Franklin Blvd), Hoppers Crossing Melway:206.J1
Convenor(s)	John Healey jpjh@melbpc.org.au Brian Hallam - 0407 493 454 b_hallam@yahoo.com

Website Design - Tutorials

Date Jan	No Meeting
Feb-Nov	Fourth Sun of month
Dec	No Meeting
Time	2pm - 4pm
Email	webdesign@melbpc.org.au
Location	Melb PC HQ, Level 1, 479 Warrigal Rd, Moorabbin Melway:78.D8
Convenor(s)	Fleur Stephens - 0407 330 963

Yarra Ranges

Date Jan	No Meeting
Feb-Nov	Fourth Tue of month
Dec	Third Tue of month
Time	9:15am - 12:30pm
Email	yrig@melbpc.org.au
Location	Japara Living and Learning Centre, 54-58 Durham Rd, Kilsyth Melway:51.J5
Convenor(s)	Bryan Paten - 0429 430 640 Shane Mason - 9733 5390

Website Design - Troubleshooting

Date Jan	No Meeting
Feb-Nov	Fourth Sun of month
Dec	No Meeting
Time	4pm - 6pm
Email	webdesign@melbpc.org.au
Location	Melb PC HQ, Level 1, 479 Warrigal Rd, Moorabbin Melway:78.D8
Convenor(s)	Fleur Stephens - 0407 330 963

Windows Plus

Date Jan	No Meeting
Feb-Nov	Third Sat of month
Dec	No Meeting
Time	10am - 12noon
Email	winplus@melbpc.org.au
Location	Melb PC HQ, Level 1, 479 Warrigal Rd, Moorabbin Melway:78.D8
Convenor(s)	John Swale - 0417 530 766 Barry Stone



Membership Drive

Introduce a new member* to Melbourne PC User Group and receive credit towards your membership fees.

Did you know that Melb PC held its first meeting in November 1983?

Yes! it's true.

The group flourished and in 1993 started its own Internet service, becoming one of the founding suppliers of the Internet in Australia, and it is still a licensed ISP. Melb PC is Australia's largest and most active personal computer/technology group with thousands of members participating in more than 40 Special Interest Groups (SIGs) that meet regularly throughout Melbourne.

New members will receive all the benefits you already enjoy – the digital newsletter, the help lines, the Special Interest Groups (SIGs), the Monthly meetings and access to mobile broadband, personal email or IP4 Rental/Web Hosting/Private email Hosting, Microsoft OS discounts and you will be helping your club to grow.

You know how much you enjoy being part of Melbourne PC User Group. So why not bring along a friend to enjoy it too? Prospective new members are always warmly welcome at the Monthly Meeting and SIG Meetings.

Each new member* you enrol gives you three months credit towards your membership renewal. (approx. \$24.00 value against a full membership). The more new members you enrol, the more credit towards your next membership renewal.

(* This does not include Family members or anyone re-joining within 12 months of leaving Melb PC).

MEMBERSHIP APPLICATION FORM

Title	First Name	Last Name	
Business Name			
Address			
Suburb		Post Code	
Phone		Mobile Number	
DOB	Preferred Email Address		
SUMMARY		Additional Family Members or Corporate Representatives (Maximum 2 names)	
Individuals	\$95 <input type="checkbox"/>	Title	First Name
Additional Family Members (Spouse and children)	\$25 <input type="checkbox"/>	Title	First Name
Pensioners/ Adult students A (25+)*	\$80 <input type="checkbox"/>	Title	First Name
Students B (14-25 yrs.)	\$35 <input type="checkbox"/>	Title	First Name
Corporate	\$190 <input type="checkbox"/>	Title	First Name
(One membership is two representatives)		Title	First Name
TOTAL: \$ <input type="text"/>		Please provide emergency contact details below.	
		Full Name.	
		Phone no.	

Referred by member: _____ full name or membership number /SIG_____

Terms and conditions

- Adult students A must attach a photocopy of their student card or letter from their educational institution confirming full student status.
- All student B members must have a Student Card and have evidence of their age at time of joining.
- Pensioners must attach a photocopy showing both sides of their Centrelink Pension Concession Card. Change of family member(s) must be identified in writing to the club secretary.

I hereby apply for membership of Melbourne PC Users Group Inc. (A000329V) and agree to abide by its rules while I remain a member.

Signature _____ Date ____/____/____

Payment Details

Name on Card	Expiry Date
Credit Card Number	
Signature	Date ____/____/____

Email User Name Selection

List the user ("login") names you would like in order of preference. Write very clearly, to avoid our confusing certain letters. User names are expressed in lower case letters and must represent your real name in some recognisable way e.g. "John J. Jones" might request user names such as "john", "johnj", "jjones", etc. Any user name that is already allocated or deemed unsuitable in the opinion of the system administrators will not be allocated.

Choice 1. _____@melbpc.org.au

Choice 2. _____@melbpc.org.au



MELBOURNE PC USER GROUP INC.

ABN 43 196 519 351

(Victorian Association Registration No. A0003293V)

Unit 26, 479 Warrigal Road, Moorabbin Vic 3189 Australia

"Members helping Members" Telephone: (03) 9276 4000

OFFICE 365 PRO PLUS

1 Year Subscription



Word



Excel



PowerPoint



OneNote



Access



Publisher



Outlook

Microsoft Office 365 ProPlus for MelbPC Members

Subscriptions for Microsoft's desktop program suite Office 365 ProPlus are now available to Melbpc members at a reduced rate.

The programs included are; Word, Excel, OneNote, PowerPoint, Outlook, Publisher and Access. Members who take up this offer will be able to install the suite on up to fifteen different devices: 5 computers (PC or Mac), 5 tablets (iOS/Android/Windows) and 5 smartphones (iOS, Android, Windows). The new 2016 versions are available now.

Microsoft Office ProPlus is available to members for an annual subscription, set for the first year and payable by members in advance. (*) **Renewal for each year will reflect Microsoft's current price at the time of renewal.**

After payment members will be able to download the program suite onto their own computers using their Office 365 login details (the same as they already use for email and other cloud services). As long as the subscription is maintained, members will receive updates and upgrades to the latest version of Office.

Our existing Office 365 Enterprise service provides the 'cloud' versions of some Office applications: Word, Excel, PowerPoint and OneNote. These can be used during a login to Office 365 via the web. They do not include all of the features available on the desktop versions. Office 365 ProPlus provides the full versions of those applications, and others not available at in the cloud at all: Outlook, Publisher and Access. (Publisher and Access are not available in the Mac OS X version.) The ProPlus programs can be used when the computer is offline and not connected to the internet, as they are installed directly on the computer (or tablet/ smartphone).



Skype for
Business



InfoPath



OneDrive
for Business

October Calendar

<div>  <div>V3 - updated 25-Sep-2017</div> <h2>SIG & Other Meetings — Oct-2017</h2> </div>						
Sun	Mon	Tue	Wed	Thu	Fri	Sat
1	2	3	4 North East Genealogy SIG <i>Heidelberg</i> 10am - 12noon MONTHLY MEETING <i>Melb PC HQ, Moorabbin</i> 7pm – 9:30pm then Supper (WAFFLE) at Fong's 9:35pm	5 Sunbury Daytime SIG <i>New Users</i> 9:30am - 12noon	6 Essendon SIG <i>Main meeting</i> <i>Avondale Heights</i> 9:30am - 12noon Multimedia Home Entertainment SIG <i>Mount Waverley</i> 10am - 12noon	7
8 East Workshop & 3D Printing SIG <i>Mount Waverley</i> 10am - 2pm	9 Access (database) and Excel SIG <i>Moorabbin</i> 6:30pm – 8:30pm Video Inner East SIG <i>Ashburton</i> 7:30pm - 9:30pm	10 Investment Tools - WASINT SIG <i>Moorabbin</i> 10:30am - 12:30pm	11 Video Production – Sony SIG <i>Moorabbin</i> 10am - 12noon North East Daytime & Photography SIG <i>Heidelberg</i> 10am - 12noon Communications SIG <i>Moorabbin</i> 7pm – 9:30pm Microcontroller SIG <i>Moorabbin</i> 7pm – 9:30pm	12 Sunbury Daytime SIG <i>Advanced</i> 9:30am - 12noon East SIG <i>Blackburn South</i> 7:30pm - 9:30pm	13 Essendon SIG Open Forum <i>Avondale Heights</i> 9:30am - 12noon Hardware SIG <i>Mount Waverley</i> 10am - 12noon Casey SIG <i>Beaconsfield</i> 1pm - 3:30pm	14 Linux Workshop – Moorabbin SIG 10:30am - 1:30pm Microcontroller Workshop SIG <i>Moorabbin</i> 12noon - 5pm Raspberry Pi – Moorabbin SIG 2pm - 4pm
15 Beginners East (BEAST) SIG 10am - 12:30pm MACE (Atari Computers) SIG <i>Moorabbin</i> 10am - 2pm Genealogy East SIG <i>Vermont South</i> 1pm - 3:30pm	16 Mornington Peninsula SIG General inc Q&A Mornington 9:30am - 12noon — Family History Mornington 1:30pm - 4:30pm Northern Suburbs Linux SIG <i>Watsonia</i> 7:30pm – 9:30pm	17 Wyndham PC Users/Multimedia <i>Hoppers Crossing</i> 7:30pm – 9:30pm	18 North East Android SIG <i>Heidelberg</i> 10am - 12noon	19 Sunbury Daytime SIG <i>Main Meeting</i> 9:30am - 12noon Bayside SIG <i>Brighton</i> 10am - 12noon Music SIG <i>Moorabbin</i> 7:30pm – 9:30pm	20 Essendon SIG <i>Varies.</i> <i>Avondale Heights</i> 9:30am – 12noon Digital Images SIG <i>Including Photoshop</i> <i>Mount Waverley</i> 10am - 12noon Melb PC Committee 1pm, Mt Waverley PC Update – Articles Deadline	21 Windows Plus SIG <i>Moorabbin</i> 10am - 12noon
22 Everything Apple SIG <i>Moorabbin</i> 2pm - 4pm Website Design SIG <i>Tutorials</i> <i>Moorabbin</i> 2pm - 4pm — <i>Troubleshooting</i> <i>Moorabbin</i> 4pm - 6pm	23	24 Yarra Ranges SIG <i>Kilsyth</i> 9:15am - 12:30pm	25 Video Production – Pinnacle SIG <i>Moorabbin</i> 10:00am – 12:30pm Mornington Peninsula SIG Family History – Advanced DNA Mornington. 2pm - 4pm PC Update – Reports Deadline	26 Sunbury Daytime SIG <i>Maintenance & Linux</i> 9:30am - 12noon	27 Raspberry Pi - Mt Waverley SIG 10am - 12noon Casey Workshop SIG <i>Beaconsfield</i> 1pm - 3:30pm	28 Microcontroller Workshop SIG <i>Moorabbin</i> 12noon - 5pm
29	30	31	Legend SIG meeting at Melb PC HQ, Moorabbin. Non-Moorabbin meeting. Cancelled Meeting Changed Meeting To be confirmed	Changes Please advise changes to: calendar-admin@melbpc.org.au	Other SIG (Special Interest Group) information: http://www.melbpc.org.au/interest-groups/ Recent Changes: http://www.melbpc.org.au/interest-groups-resources/sig-changes/	Have A Question Post it on Yammer Yammer: http://yammer.com/melbpc.org.au/