

*Official Magazine of the MELBOURNE PC USER GROUP INC.*

# PC UPDATE

## Web Pages: Do it Yourself.



# WORDPRESS

**Plus:**



- Two Million Raspberry Pi Devices
- Phishing Targets Melb PC
- New Committee
- Group Reports



[www.melbpc.org.au](http://www.melbpc.org.au)

## MELB PC PURPOSES

THE PURPOSES OF THE GROUP are to conduct, on a non-profit basis, activities aimed at the effective utilisation of the personal computer and to endeavour to achieve such effective utilisation by means of:

- Advancing computer literacy
- Advancing the art and science of information processing through education and interchange of ideas
- Keeping members abreast of developments in computing and information technology and enabling members to exchange information and experience
- Representing computer users in public debate and by acting and speaking on their behalf where they would be affected by proposed legislation or other regulatory measures
- Providing a forum for the exchange of views among computer users and between computer users and the computer industry
- Co-operating supporting or joining with, or in, other organisations with similar purposes
- Undertaking other activities beneficial to the Group

In order to further its purposes the Group shall have the rights, powers and privileges of a natural person.

# PC UPDATE

DECEMBER 2013 • VOLUME 30 • ISSUE 11

## EDITORIAL PANEL

Lance Lloyd, Sharman Grant, Jan Weiner, Charles Wright

## EDITOR

Katharine Shade, CCE Design  
[editorpc@melbpc.org.au](mailto:editorpc@melbpc.org.au)

## ART DIRECTOR/DESIGNER

Katharine Shade, CCE Design

## CONTRIBUTORS

John Clark, Norman Elliman, Harry Lewis, Lance Lloyd, Craig Mattson, Katharine Shade, George Skarbek, Fleur Stephens, John Swale.

**SIG Coordinator:** Jan Weiner

**Sig Reports:** Faye Barkla, Stephen Davidson, Craig Evans, Ron Harper, Susan Jensen, Geoff Lethbridge, Bryan Paten, Kathy Rouse, John Sapsford, Fleur Stephens.

**Calendar and Maps:** John Swann



## PUBLISHED BY

**MELBOURNE PC USER GROUP INC.**

Suite 26, Level 1, 479 Warrigal Road  
Moorabbin, VIC 3189

Office hours 9am-5pm  
Phone (03) 9276 4000  
Email [office@melbpc.org.au](mailto:office@melbpc.org.au)  
Office Manager Dianne Vogt  
Office Staff Julie Ackland, Lauren George

## COPYRIGHT

Melbourne PC User Group Inc. reserves all copyright in the content and design of *PC Update* (this publication).

*PC Update* must not be republished in whole or in part using print, electronic or any other formats (including optical and flash media together with the Internet).

You may make a copy of part or all of *PC Update* on your local computer for your own use, and print a hard copy of *PC Update* for your own use, provided that you do not remove any copyright notice on any page. You may not, in any form, or by any means:

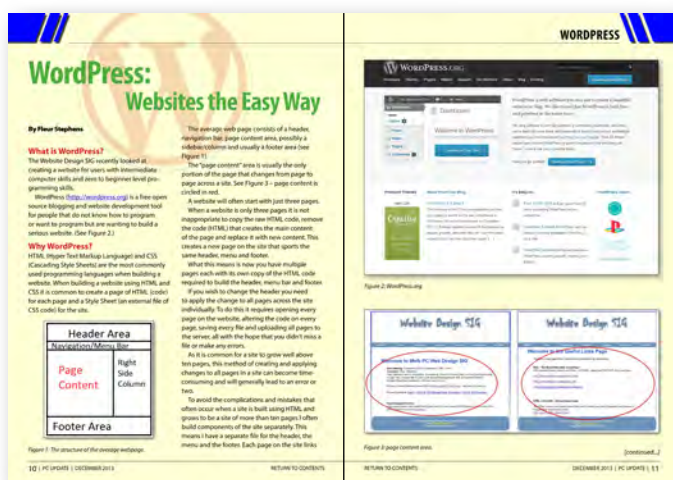
- cause any of the material in the *PC Update* to be framed or embedded in a website,
- commercialise any material in *PC Update*,

- otherwise reproduce, adapt, store in a retrieval system, transmit, print, display, perform, publish or create derivative works from any part of the content or design of *PC Update*, except with our prior written consent or as permitted by applicable copyright legislation.

Members who breach copyright will forfeit their membership rights and may be subject to legal action from the authors and copyright holders.

Copyright © 2013 Melbourne PC User Group Inc. and individual authors. Except where otherwise stated, all material is the copyright of the author. Contributions from authors may not be copied without the author's prior written permission.

Melb PC Columns	Directory .....	4
	<i>PC Update</i> Editor's Report – Katharine Shade .....	5
	Melb PC President's Report – Harry Lewis .....	7
Melb PC Articles	Melb PC Needs More Volunteers .....	9
	WordPress: Websites the Easy Way – Fleur Stephens .....	10
	Raspberry Pi Corner – Lance Lloyd .....	14
Columns	Random Access – John Swale .....	16
	Q&A – George Skarbek .....	18
Articles:	Hints and Tips: Useful Definitions – Katharine Shade .....	21
SIGS	Local/General and Special Interest Groups .....	23
	Group Reports .....	24
	Group Details .....	36
Melb PC	How to Get Help .....	44
	Notices: Committee Elections Returning Officer's Report .....	46
	Notices: Committee 2013-2014 .....	47
	Notices: Committee Profile – Norman Elliman .....	49
	Application Forms .....	49
	Monthly Meeting .....	56
	Calendar .....	59



**Page 10:**  
**WordPress**



**Page 30:**  
**Northern Suburbs Linux**

**iHELP** (See [page 44](#) for more details.)

## iHelp

The main iHelp system for Melb PC members:

<http://ihelp.melbpc.org.au/helpdesk/iuser/index.asp>

## First Aid and Internet Help Line

For simple and urgent problems.

(03) 9276 4088, Monday to Friday 10am – 3pm.

## Help via Email

[help@melbpc.org.au](mailto:help@melbpc.org.au)

If no web page access.

## Dial Help

Volunteer list: <http://www.melbpc.org.au/help/>

## ONLINE SERVICES

### Internet Service

Melbourne Local Access (03) 9697 4000

### Intranet Service

Melbourne Local Access (03) 9697 4004

### Melb PC Home Page

<http://www.melbpc.org.au>

### Internet Services Page

<http://www.melbpc.org.au/isp/>

## MANAGEMENT COMMITTEE

[committee@melbpc.org.au](mailto:committee@melbpc.org.au)

### President

Harry Lewis [president@melbpc.org.au](mailto:president@melbpc.org.au)

### Vice-President

Charles Wright [vicepresident@melbpc.org.au](mailto:vicepresident@melbpc.org.au)

### Treasurer

Geoffrey Keenan [treasurer@melbpc.org.au](mailto:treasurer@melbpc.org.au)

### Secretary

Ian Rankin [secretary@melbpc.org.au](mailto:secretary@melbpc.org.au)

### Members

Norman Elliman [normane166@gmail.com](mailto:normane166@gmail.com)

Phil Lew [phil@melbpc.org.au](mailto:phil@melbpc.org.au)

Lance Lloyd [lance.melbpc@fastmail.fm](mailto:lance.melbpc@fastmail.fm)

Don McKenzie [dimck@solemate.com.au](mailto:dimck@solemate.com.au)

Roger Wragg [rdwragg@fastmail.fm](mailto:rdwragg@fastmail.fm)

## HONORARY LIFE MEMBERS

Ray Beatty

Lloyd Borrett

Dave Botherway

Douglas Brooke

Sean Clarke

Thomas Coleman

William Dair

Guiseppe De Simone

Bruce Elliott

Bill Ford

John Hall

Stan Johnstone

Philip Lew

Barry Martin

Barry McMenomy

John Morris

Ash Nallawalla

Ian Rankin

George Skarbek

Peter Smith

Richard Solly

John Swale

Gary Taig

Ken Thomas

David Webster

Ian Webster

Yvonne Webster

Glen Webster

Charles Wright

## SUBMISSIONS

Email your submissions as file attachments to [editorpc@melbpc.org.au](mailto:editorpc@melbpc.org.au). Standard document formats are accepted (e.g. .txt, .rtf, .doc, .docx). Please keep formatting to a minimum.

Accompanying graphics should be separate high-quality JPG or PNG attachments – NOT embedded in the document.

Members' free ads must be technology related and include the member's full name.

## AUTHOR RELEASE

All authors must lodge a completed submission form, available from <http://ccedesign.com.au/melbpc/release-form>.

## SUBMISSION DEADLINES

Note: there is no January issue.

February 2014 issue:

9 January (16 January for SIG reports)

March 2014 issue:

9 February (16 February for SIG reports)

Unless other arrangements are made with the editor.



# PC Update Editor's Report

## December 2013

By Katharine Shade

[editorpc@melbpc.org.au](mailto:editorpc@melbpc.org.au)

The first time my computer was attacked by something malicious was back in 1988. My computer told me it was "stoned" – it had the marijuana virus. That was thanks to a boot sector infection on a 5.25 inch floppy which I'd left in the drive, so when the computer started up, it tried to boot from it and was able to pass on the virus.

I could never get Windows 3.1 to work properly again on that computer, but it didn't worry me as I spent most of my computing time in DOS. As long as I had XTree Pro for file management and AmiPro for word processing, I had all I needed.

The infection was picked up in the IT department at LaTrobe University. It was one of the earliest boot sector viruses, probably originating in New Zealand.

Computer attacks are much more sophisticated these days, with the addition of a whole pile of new nasties we need to protect ourselves from, known collectively as malware, and worms and trojans taking over from viruses as the main threat.

So, we have computer viruses, worms, trojan horses, rootkits, keyloggers, ransomware, dialers, spyware, adware, malicious Browser Helper Objects (BHOs), rootkits and rogue security software. There's even "grayware" which is applications that are not explicitly malware, but can affect

your computer and be annoying, including spyware, adware, dialers, joke programs and remote access tools.

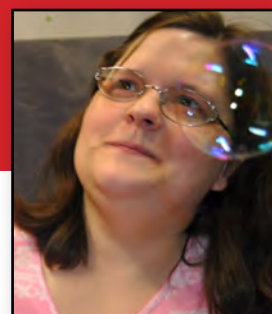
Want more? There are Potentially Unwanted Programs (PUPs), which are usually downloaded via a download helper when the user fails to read the fine-print and tick/un-tick boxes referring to additional downloads.

And it's not just "user error" allowing the nasties in (such as leaving a floppy in the drive on re-boot). Malware exploits security vulnerability in applications we would expect to be safe to use, e.g. Adobe Flash Player, Java or Adobe Reader. Even factory-sealed hard drives, quality laptops and iPods have been known to include stowaways.

Phishing is particularly insidious and has been known to trick even experienced users. It is mostly commonly seen via emails which appear to be from trusted sources. Generally the user is requested to do one of the following:

- Open an attachment, which may be an executable disguised as a document;
- Click on a link which takes you to a malware-laden website;
- Click on a link which takes you to a fake website (e.g. a bank) where it asks for you to login – thereby gaining your details which can then be used to access your financial information.

*[continued...]*



### PC Update deadlines

Type of Copy/Timeline	February Issue	March Issue
Articles for publication; feature articles, reviews, letters to the editor, member ads	9 January 2014	9 February 2014
SIG Reports	16 January 2014	16 February 2014
PC Update available for download	22 January 2014	26 February 2014

[...continued]

## Melb PC members are targeted

Many Melb PC members have recently been subject to phishing attempts. Claiming to come from Melb PC, the email asks members to complete the "System backup Request Form" to avoid loss of data.

Its attention to detail about Melb PC makes it seem more legitimate.

Apart from tying up Melb PC resources in assisting those who have enquired about it, it also makes it harder for actual Melb PC emails to be seen and recognised as legitimate.

Good advice usually boils down to:

- If in doubt about clicking on a link in an email, DON'T, and ask advice.
- No legitimate businesses will ever ask you for your user name/password, either directly in the email or via a link in the email. Log in via your usual browser entry point, never from an email link.



Phishing to Melb PC members

## CryptoLocker threat

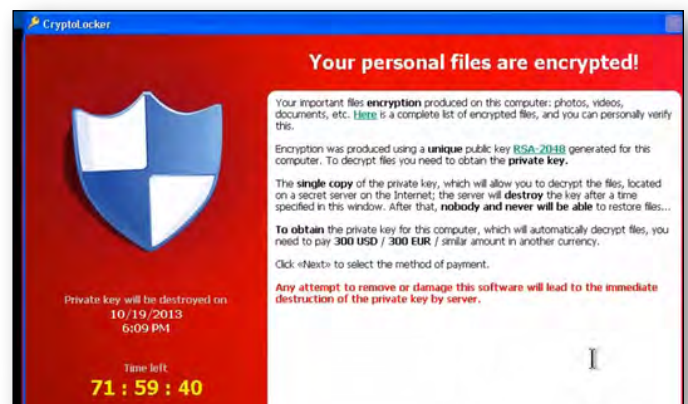
George Skarbek has brought my attention to a particularly dangerous trojan, which may be behind this particular phishing attempt.

CryptoLocker is ransomware which encrypts files on your hard drive and on the local network, including "in the cloud." A demand is made for hundreds of dollars with a countdown in exchange for a de-encryption key (which is not forthcoming).

Both the Computer Emergency Readiness Team (US-CERT), part of the USA Department of Homeland Security, as well as Britain's National Crime Agency (NCA) has issued an alert to computer users about this threat.

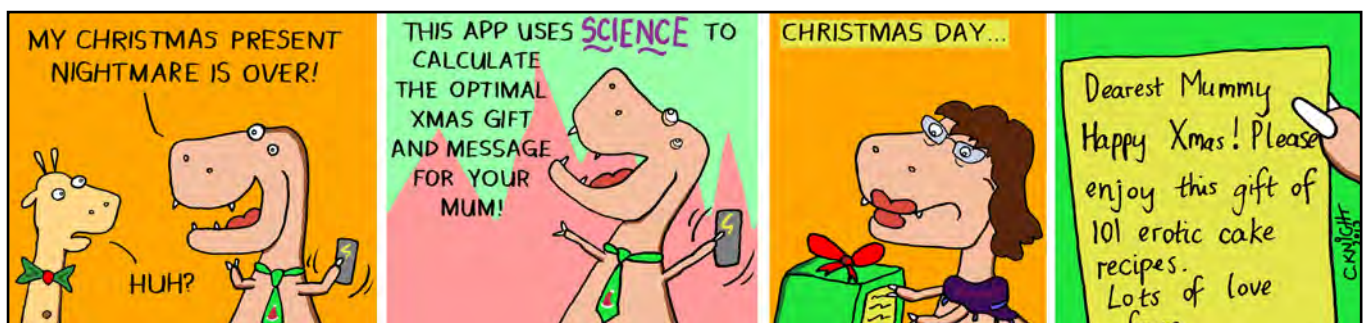
The main preventative measures are:

- Don't click on links in the first place
- Keep antivirus software and operating systems updated.
- Regularly back up files, with multiple redundancies including off-network and off-site backups. ☺



CryptoLocker holds your data to ransom

## Terrible Lizard



© 2013 C. Knight

# Melb PC President's Report

## December 2013

**By Harry Lewis**

[president@melbpc.org.au](mailto:president@melbpc.org.au)

In my first report here I wish to pay tribute to Charles Wright's contribution to Melb PC. In very trying and difficult conditions he has played the major role over the past two years in bringing the Group back to an even keel after waves had been washing ominously over the gunwales of our good ship. His past service and awareness of the Group's history, and knowledge of all matters pertaining to personal computing, are outstanding. I am grateful that he is staying with us now in the role of Vice President.

### The year ahead

Melb PC faces another demanding year. One challenge jumps off the page of our annual accounts: we need to move towards balancing the books before our club runs out of cash. On the income side, the best and most accessible way to improve our position is to recruit new members, and every member can help by encouraging their friends to join us.

Inevitably we have to look at making savings too.

Another challenge is to maintain and to enhance our services to members. At the same time as we are planning to move our internet provision out of its rented accommodation in Burnley, we are seeking to enhance it by our email upgrade, and by the development of our new website.

It may seem an impossible ask to improve services while at the same time reducing costs. The way we can square that circle is by volunteering. All members who value what their membership provides should consider how they can add their own effort to maintaining those services. Your

Committee is in the process of identifying key areas where new volunteers can make a real difference.

This month we are calling for volunteers to help with the new website, both in reviewing its content and in providing interesting new material. We also need volunteers to find speakers, or to speak themselves, at the Moorabbin monthly meetings. For more detail please see the notice on [page 9](#).

Without more volunteers, there will not be a new website.

Without more volunteers, we shall not be able to maintain the monthly meeting program at its usual high standard.

### Your new Committee

For your introduction to the new Committee, see [pages 46-49](#). The Committee has held a preliminary meeting and identified the tasks it must perform, and the Committee members who will have those responsibilities. This year we start with spare places in the Committee and we shall return to that issue after further work on identifying our most important project areas.

### Enhanced internet offerings

Over the past few weeks Melb PC's offerings of internet connectivity from Optus Business Broadband have been transformed. We can now offer a wide range of different levels of service, both 3G and 4G, with a variety of different data allowances, and a choice between USB modems and wi-fi routers. If you have a place in your life for wireless broadband, whether as your primary connection to the internet, or for times when you are away from a fixed connection at home, Melb PC's offerings are worth a hard look. See [page 52](#).



*[continued...]*

[...continued]

Our offerings should be of particular interest to our members who are just now moving away from dial-up as that service moves to its final curtain at the end of February 2014.

## Progress on the email upgrade

By the time you read this, we expect that every member using Melb PC email will have received information about their new email service. The last group of members to be contacted is those who still use our dial-up Internet service. If you have received your new email login details, you are encouraged to activate your new account quickly.

To give time for all members to do this, even if they take a summer holiday away from their computers, we expect to flick the switch from Burnley to Redmond in February 2014. As we approach the final date we shall be reminding all affected members to make sure they are ready. We shall also be talking directly to a small group of members whose help we need before we can set up their new accounts.

## Looking ahead: farewell Windows XP

In April 2014 Microsoft will cease to provide security upgrades for Windows XP. We don't know exactly what will happen, and when, but the consensus of industry commentators is that the risk of malware invasion (from viruses, Trojans, rootkits) will be substantially increased. The risk is not only to the XP users themselves but also to others who might be victims of malware installed through a back door into computers still running XP, which then are used/abused to send out spam or phishing emails.

We shall return to this topic in our February issue, but if you are offered a seasonal gift that runs a later operating system, that horse has sound teeth.

I wish you all a pleasant holiday season.

Please send any comments you may have on these topics or any others that concern you about our club to: [president@melbpc.org.au](mailto:president@melbpc.org.au). If you would like to start a wider discussion a good place to air your views is the Melb PC thinktank newsgroup: [melbpc.thinktank](mailto:melbpc.thinktank). ☺

## BREAKING NEWS – Our Melb PC Newsgroups

We received a reminder about analogue TV switching off in December, but we were also told that we may need to re-tune our TVs in February as some TV channels are changing their frequency as the final step in the move to digital-only TV.

*We are often first with the news in the newsgroups. (A.K.A. Anywhere, Anytime Group).*

We have 14 newsgroups, each with a different emphasis. You can read some of the newsgroup conversations by logging into <http://forum.melbpc.org.au/newsforum> with your Melb PC username and password.

To read all of the newsgroups, and when you are ready to start a topic, join a conversation or ask for help, you can setup a newsreader utility on your computer. We will help you with this. Here's the place to start <http://member.melbpc.org.au/~anywhere>





## Melb PC Needs More Volunteers

To maintain and to enhance our services to members, we require more help. Here are two areas where assistance is urgently needed.

### Help with our New Website

Work on upgrading Melb PC's website is under way. Technical development is being undertaken by Craig Mattson. Charles Wright is overseeing the development of content and the look and feel of our new site.

We need to recruit a panel of editors who will review the content of the present site, and decide whether to approve it immediately for the new site, to update it for the new site, or to discard it as obsolete.

We are also looking for volunteers to provide new and interesting content both for the website and for *PC Update*, including reviews of hardware and software, and book reviews.

As members come forward, workshops can be organised to train volunteers in these activities.

Contact: Charles Wright – [vicepresident@melbpc.org.au](mailto:vicepresident@melbpc.org.au)

### Help With Moorabbin Monthly Meetings

Stewart Gruneklee, who has been hosting our monthly meetings, will continue in his role of Master of Ceremonies during the coming year, but has handed over the background task of identifying and recruiting speakers.

We need volunteers among members who value these events – to offer presentations, to suggest interesting topics and presenters, and to help with contacting speakers and planning the programme through the year.

Contact: Harry Lewis – [president@melbpc.org.au](mailto:president@melbpc.org.au)

## BREAKING NEWS – Our Melb PC Newsgroups

We had a discussion about spam calls on our phones and the effectiveness, or lack thereof, of the "Do Not Call Registry." Seems lots of these calls come from overseas and/or with faked numbers (easy to do with a VoIP service), so there is nothing much DNCR can do about it.

*If you can't find a conversation that interests you, wait a few minutes. You are sure to find one. Of course you could start your own topic, or just ask for help (Anywhere, Anytime Group).*



# WordPress: Websites the Easy Way

By Fleur Stephens

## What is WordPress?

The Website Design SIG recently looked at creating a website for users with intermediate computer skills and zero to beginner level programming skills.

WordPress (<http://wordpress.org>) is a free open source blogging and website development tool for people that do not know how to program or want to program but are wanting to build a serious website. (See Figure 2.)

## Why WordPress?

HTML (Hyper Text Markup Language) and CSS (Cascading Style Sheets) are the most commonly used programming languages when building a website. When building a website using HTML and CSS it is common to create a page of HTML (code) for each page and a Style Sheet (an external file of CSS code) for the site.

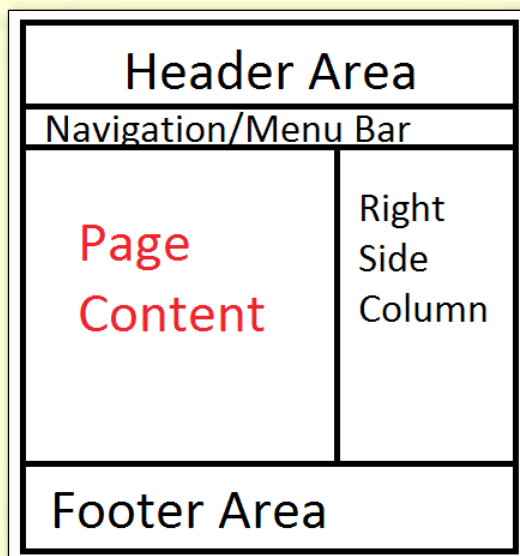


Figure 1: The structure of the average webpage.

The average web page consists of a header, navigation bar, page content area, possibly a sidebar/column and usually a footer area (see Figure 1).

The “page content” area is usually the only portion of the page that changes from page to page across a site. See Figure 3 – page content is circled in red.

A website will often start with just three pages.

When a website is only three pages it is not inappropriate to copy the raw HTML code, remove the code (HTML) that creates the main content of the page and replace it with new content. This creates a new page on the site that sports the same header, menu and footer.

What this means is now you have multiple pages each with its own copy of the HTML code required to build the header, menu bar and footer.

If you wish to change the header you need to apply the change to all pages across the site individually. To do this it requires opening every page on the website, altering the code on every page, saving every file and uploading all pages to the server, all with the hope that you didn't miss a file or make any errors.

As it is common for a site to grow well above 10 pages, this method of creating and applying changes to all pages in a site can become time-consuming and will generally lead to an error or two.

To avoid the complications and mistakes that often occur when a site is built using HTML and grows to be a site of more than 10 pages I often build components of the site separately. This means I have a separate file for the header, the

[continued...]

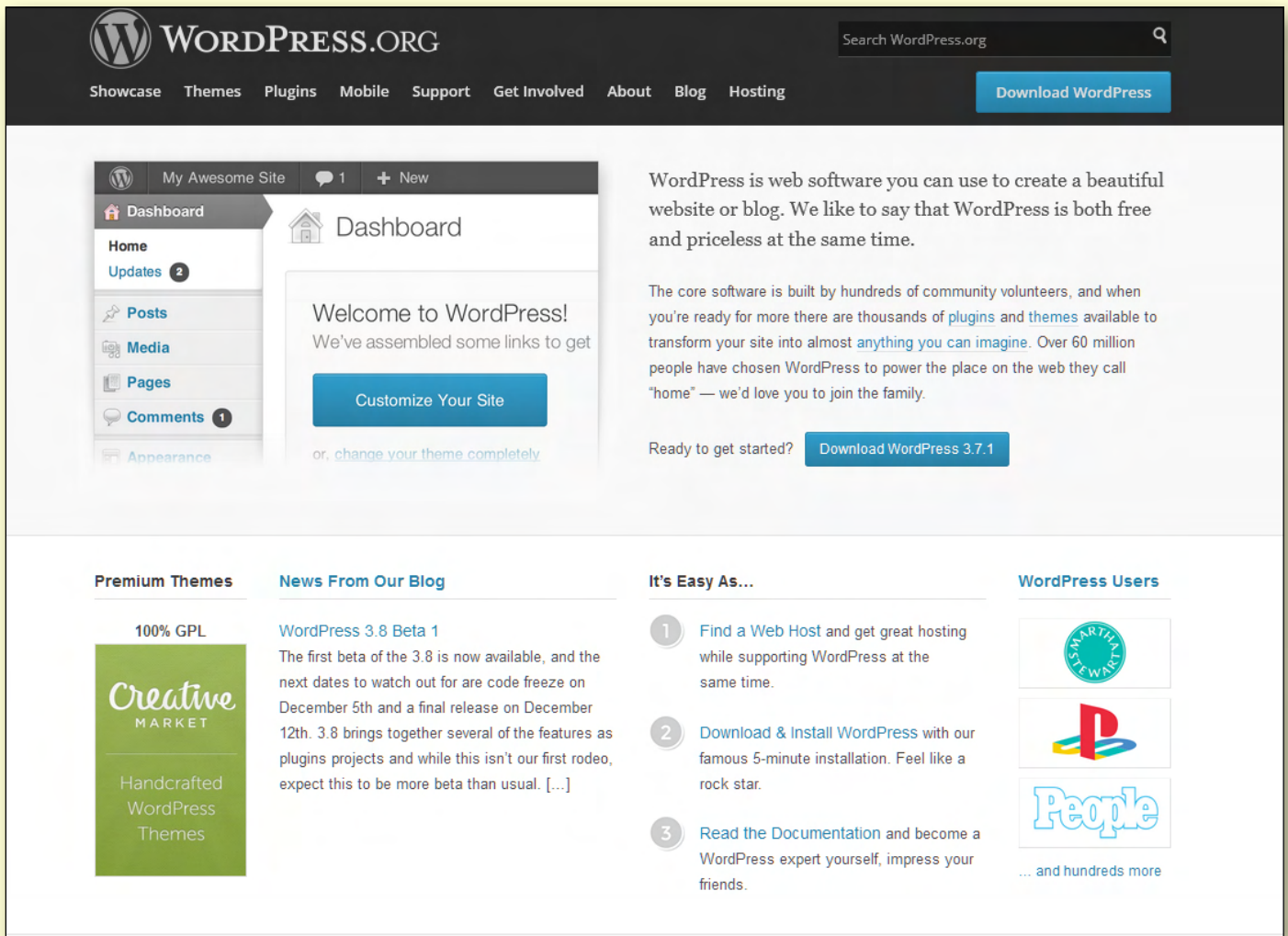


Figure 2: WordPress.org



Figure 3: page content area.

[continued...]

[...continued]

menu and the footer. Each page on the site links to (calls) the header file, the menu file and the footer file when building the page. This means I need only change one file if I want to make a change to the menu bar, the header or the footer and it is applied to all pages on the site. (See Figure 4.)

Though WordPress uses a similar technique (separating components of the page) to create a page on a website, it goes the extra mile, offering the user an administrative interface to change the layout, colours, font and background of the site and a text editor that enables the user to create and alter any main content on any page without knowledge of HTML or CSS (see Figure 5).

The administrative interface includes a page text editor and a post text editor similar to word or wordpad. The screenshot below highlights the Add new Post page. As you can see it is quite simple to use. In the middle of the page lies the text editor which gives the user the option to use it as a visual text editor or to view the HTML. To the right of the text editor, the user is given the option to Save, Preview, Trash or Publish the Post (see Figure 6).

## The history of WordPress

WordPress was initially developed by a team of three. The story of WordPress suggests Matt Mullenweg became an enthusiastic blogger with a fondness for the b2 blogging platform, when he developed a need to post photos online. In

2003 when support and further development of the b2 platform halted, Matt announced on his blog that he would like to further develop the b2 platform to suit his needs and to update the platform to remain current with web standards .

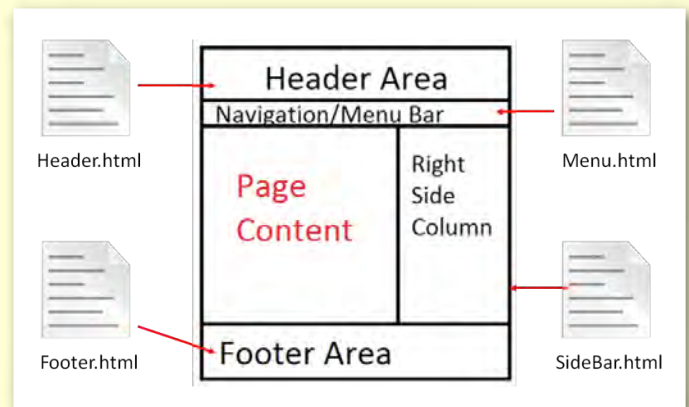


Figure 4.




Figure 5



He was soon joined by Mike Little and by original b2 developer Michel Valdrighi. The first version of WordPress was released in May 2003.

According to Wikipedia, as of August 2013 WordPress is used by more than 18.9 per cent of the top 10 million websites. WordPress is the most popular blogging system in use on the Web, at more than 60 million websites. As of September

2013, version 3.6 had been downloaded more than 6 million times.

If you would like further information regarding WordPress or any other website related technology email the Website Design Special Interest Group Convener, Fleur Stephens at [webdesign@melbpc.org.au](mailto:webdesign@melbpc.org.au) 

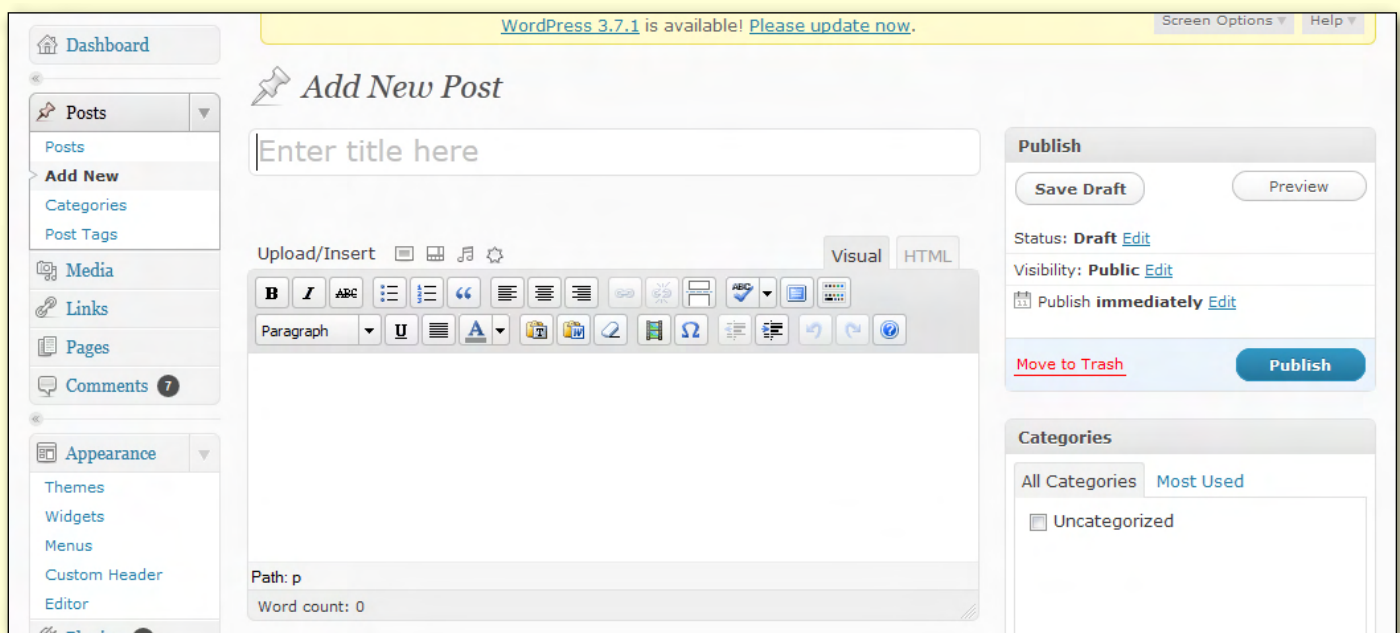


Figure 6

## BREAKING NEWS – Our Melb PC Newsgroups

A member posted a fascinating photo of a thunderstorm with six simultaneous lightning strikes over water. A lively debate followed as to whether this was actually possible, or was it manipulation of the photo?

*At any time of the day or night there is always something interesting to chat about in the newsgroups. (A.K.A. Anywhere, Anytime Group).*

We have 14 newsgroups, each with a different emphasis. You can read some of the newsgroup conversations by logging into <http://forum.melbpc.org.au/newsforum> with your Melb PC username and password.

To read all of the newsgroups, and when you are ready to start a topic, join a conversation or ask for help, you can setup a newsreader utility on your computer. We will help you with this. Here's the place to start <http://member.melbpc.org.au/~anywhere>



# Raspberry Pi Corner

By Lance Lloyd

Now that there are two million Raspberry Pi devices out there in the wild ([www.raspberrypi.org/archives/5265](http://www.raspberrypi.org/archives/5265)), what are people doing with these little computing devices?

It would seem almost anything you want. The Raspberry Pi Foundation's website ([www.raspberrypi.org](http://www.raspberrypi.org)) is replete with example after example of what 6- to 96-year-olds are doing with their Raspberry Pis.

The Mount Waverley Raspberry Pi SIG is developing a project which is still a work-in-progress, but it might inspire you to start your own project, or even get involved with ours.

The SIG is setting up a Raspberry Pi-based Server at the SIG meeting location in Mount Waverley. Apart from the learning activity of the group, our objectives for the project are to:

- 🍷 allow multiple connections to the server and the web;
- 🍷 provide a mechanism to quickly transfer new distributions of software or updates for the Raspberry Pi (rather than accessing slow websites);
- 🍷 store resources such as articles and information, videos, programs, etc for new and more experienced members to access when required; and
- 🍷 potentially host a website for the RasPi group for members to access information out of session.

The approach is to use a simple design of one RasPi server in the first instance, but a second RasPi has been purchased to allow for expansion, as additional computing power is likely to be required once the system is operational and members experience the benefits, and more people access the system.

The second RasPi will be available for use by new members of the SIG or to cover breakdowns.

The main method of implementation will be via websites such as <http://raspberrypiwebserver.com/serveradmin/> and <http://raspberrypiwebserver.com/raspberrypicluster/>.

The hardware includes:

- 🍷 Raspberry Pi;
- 🍷 4 GB SD Card (loaded with the latest Raspian OS);
- 🍷 Router;
- 🍷 Switch;
- 🍷 MBeat 13-port powered USB 2 hub;
- 🍷 Keyboard and Mouse;
- 🍷 Monitor (which can also connect to a data projector for demonstrations);
- 🍷 External Hard Drive 2TB (WD 2TB Elements USB2).

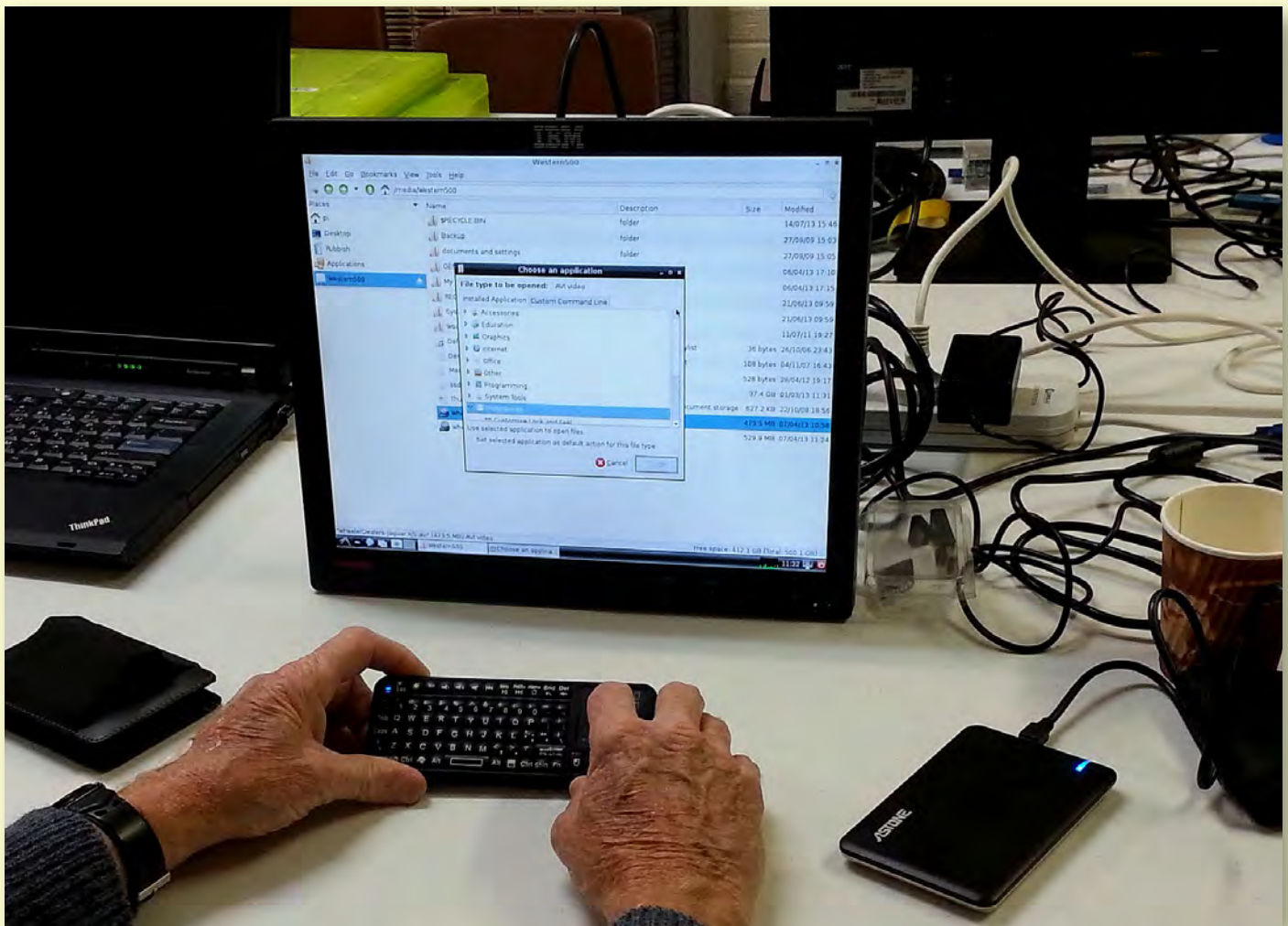
The total cost of this set-up, with some pre-existing and pre-loved components, is only about \$250.

Now we have the system up and running. We are working through some technical issues with network connections, but we have the external hard drive set up with multiple operating systems, videos, documents, and example music and photos to help with using or testing out your RasPi.

These issues will keep the group busy in January, when we hope to get the server completely operational. We will also look to house the components into a single case so it can be taken around and used for demonstration purposes (as well as quick setup on our own workshop days).

Thanks to John Hall and the crew at the Raspberry SIG for their input and inspiration on this project. 🔌





Photos: George Skarbek

## MEMBERS' FREE AD

### HELP WANTED – HOME/FAMILY VIDEOS

I am seeking assistance from someone who has experience in “home movie” production. I have a number of old Super 8mm films that have been digitised and stored in AVI format. I would like to have them made into simple “home movies” with output onto DVD. I would pay for time and any costs.

**John Clark**

**Email: [jcwbl@westvic.com.au](mailto:jcwbl@westvic.com.au) Ph: 0409 625 545**



***JOHN SWALE reports on questions and answers from the opening session of the October monthly meeting as well from members' written submissions, as answered by BARRY MARTIN.***



## USB

I have a problem with Windows programs not recognising an external USB hard drive. I go through the process of giving it a drive letter, but the next time I insert it I have the same issue. An Internet search shows many people are having the same problem. Is there some problem with Windows?

It depends on the version of Windows you are using, how up-to-date it is and whether updates have caused a problem. I have seen recent PCs with up to a dozen USB ports with flash drives and hard disks plugged in.

The problem is that every time you plug them in, the drive letter changes unless you go into disk management and assign a specific drive letter high up in the alphabet. This will usually make the drive letter stick but not always.

Always putting the device into the same USB port reduces the chance of having a problem. As does using quality drives as they have a serial number embedded into the firmware so that Windows recognises that it has seen the drive before and won't always treat it as a new device.

Sometimes if you plug a device – especially a printer – into a different port you will see Windows setting up the device drivers.

Mobile broadband devices can be problematic and may not work if placed into a different port than the one with which they were initially installed.

## EMAIL CONFIGURATION

I have made the changes to my Melb PC email for the new Outlook service and they seem to be fine. My ISP is Westnet and I use a Westnet email address. When I am connected to an ISP other than Westnet am I right in thinking that I cannot send an email using my Westnet address in Outlook using the Westnet outgoing mail server? Would Outlook.com give me a way to do this?

Yes. Go to the outgoing mail settings, check the box that says outgoing mail needs authentication, and fill in your details. This will give you access to Westnet's outgoing mail server when you're not connected directly to it. It is not specific to Outlook.com and should work with other ISP and mail client arrangement.

## NETWORK ERROR

I am using Windows XP with ADSL and when the system loads and the desktop icons appear I get a message that "There has been a network error and the update document is not available." I cannot get any further than that. It has a message that it cannot find the server or similar.

It sounds like there is something wrong with the Ethernet connection to your modem. Other possibilities include problems with the PC's network settings or the ADSL side of the modem.



You also need to do a scan of your system in case you have some malware that is blocking access to your system. There is a lot of this going around at the moment.

## WINDOWS REACTIVATION

I have just had a problem with Windows XP stating that I have a few days to reactivate Windows and that Office is unlicensed. Is it possible that I have a virus?

Assuming you have legitimate copies of the software, a virus is possible as some viruses change system files and that will make it appear that the copy is not genuine. That typically happens when you do a full repair of XP but in your case a virus could be the cause. Download and run Malware Bytes ([http://www.malwarebytes.org/products/malwarebytes\\_free/](http://www.malwarebytes.org/products/malwarebytes_free/)) and Superantispyware ([www.superantispyware.com/download.html](http://www.superantispyware.com/download.html)). It would be helpful as a follow-up to know what happens when you try to activate the software.

## JAVA UPDATES

I have Windows 7 32-bit and for the last few weeks I have been getting messages that Java needs to update. I downloaded the installer and when I run it, it freezes and I can't get past it. It happens with Chrome and Firefox.

I suspect you have some corruption in your existing version of Java. The new version uninstalls the old one as a part of the process and could be the cause of the problem.

I would manually uninstall Java. Then do a fresh install from <http://java.com/en/>, making sure to deselect the "Optional 3rd Party Installations" check box.

## ANSWERED QUESTION

The GPS problem reported over the last two months turned out to be an intermittent USB cable connection issue. [Ed: A lesson for us all! – JS] ☺

## Random Access – Over to You

Please contact me if you have any comments on the answers given, can provide a reply for an unanswered question or if you cannot attend a meeting and would like a question asked and included in this column. Contact me via the office or email [jswale@melbpc.org.au](mailto:jswale@melbpc.org.au).

The Melb PC Newsgroups and Forum (Anywhere, Any-time SIG) are a very good resource for assistance with problems. To find out how to connect to them see <http://groups.melbpc.org.au/~anywhere>.

For a more general newsgroup introduction, see <http://www.melbpc.org.au/faq/newsgroups.htm>.

Otherwise, try to contact the commercial distributors or search the Internet before asking questions here. In all cases mention the model or version numbers.

## GEORGE SKARBEK brings us answers to some curly questions.

### MULTIPLE MONITORS

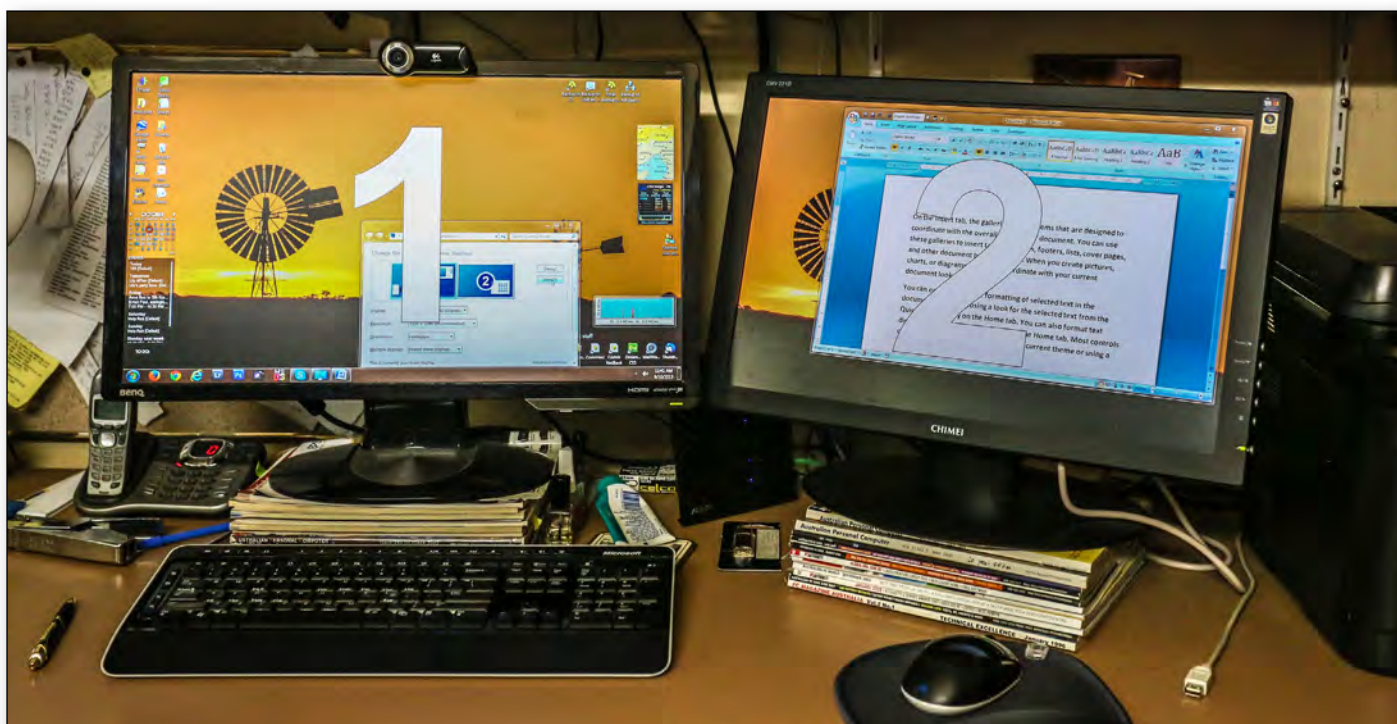
A friend of mine is using two monitors connected to his computer and says that is the best thing about his computer. Having two documents open and cutting and pasting between them looked good. How hard is this to set up?

Extremely easy in most cases, assuming that your current video card has two outputs. Most do as they can have the older blue VGA analogue 15 pin output plus one white DVI digital 24 pin output. Some have more than one digital output and may have a HDMI output as well. One of my friends has three screens connected to his computer.

A number of research articles have stated that the productivity improvement with using two monitors could be from 10 to greater than 40 per cent. Also that having two 20-inch monitors was significantly more productive than having one 27-inch screen.

With two screens you can drag one or more applications to the second screen. For example, you could have email on one screen and the browser open on the other. Or have a PDF document open on one screen while writing on the same topic in Word on the other. You can open two instances of Excel and have one spreadsheet on each screen. There is no need to press Alt+Tab or the Windows Key + Tab to switch to the other application, just move your mouse across in the same way you would with two windows open on one screen.

No additional software is required. You can identify the monitors easily: right-click on the desktop, Screen Resolution and Identify. Windows remembers what programs open on which screen, making it easy for you to become accustomed to your preferences.



Disadvantages are:

- The cost of purchasing a second monitor.
- Additional desk space is required.
- A very small increase in the power bill.

In my opinion, the advantages far outweigh the disadvantages.

## LAST PASS

### How should you back up your LastPass sites and passwords?

Before answering your question, I would like to recommend that users consider using LastPass. It is a great way to boost your productivity when logging onto secure sites by automatically having forms filled out for you. When ordering online from a new site you can have LastPass fill in all detail such as your name, full address, phone number and even the credit card details, with a couple of clicks. I have been using it for some years.

### What is LastPass?

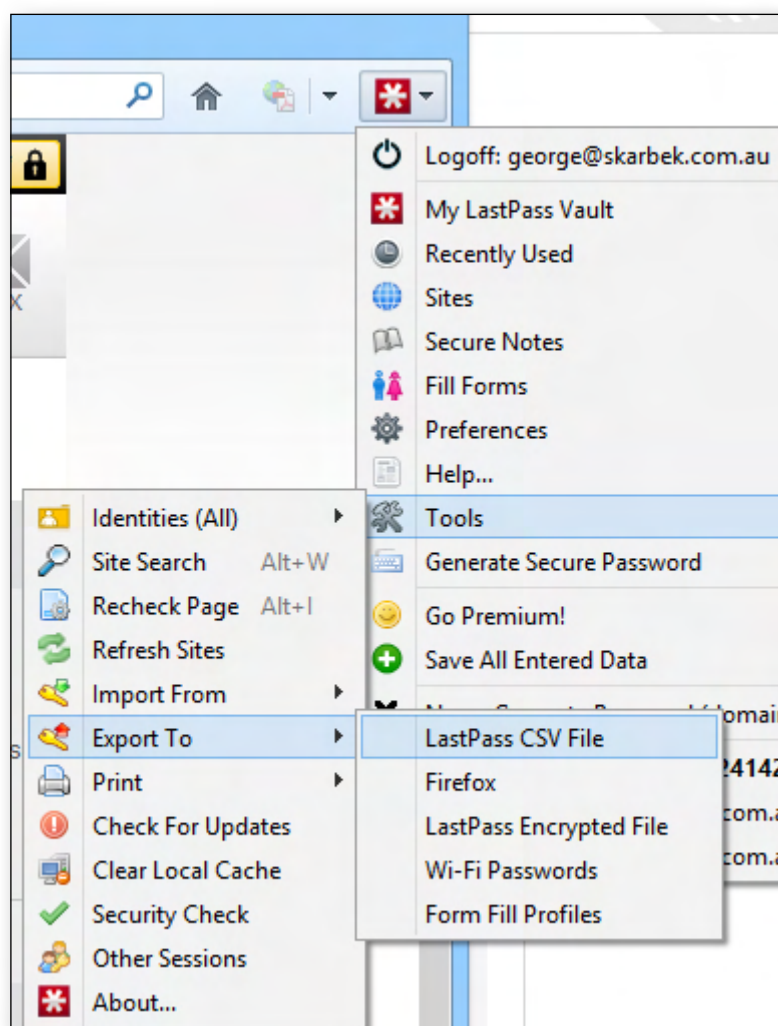
It is a password manager that works with all browsers. It has received "Editor's Choice" awards from several sources. It is easy to install, easy to use, and it is free. See <https://lastpass.com> for more details and a tutorial. A similar program is KeePass from <http://keepass.info/>

## Backing up the vault

With LastPass or any other password manager, it is essential that you do not forget or lose the master password. If you do then there is no way of retrieving this password or any other stored passwords in its vault.

So far I have not backed up the LastPass list, but your question made me reconsider. I have now written down the master password and have placed the small sheet of paper in a secure place. I also have a system where I always use one character or symbol to represent something else. For example, use the \$ to represent the ^ symbol. Even if someone finds your list, they will not be able to log in.

[continued...]



Screenshot from an animated LastPass "explainer" video <http://vimeo.com/44718447>

Exporting your LastPass data.



[...continued]

However, having a backup of all your sites and passwords stored in a very secure place is a good idea, in case of memory loss or even death, where your next-of-kin may need access to the information.

With LastPass you can extract and save your sites and passwords. However the problem now is to make this list secure.

My suggestion is to export this as a csv file which opens in Excel. Do NOT save a CSV file as it is plain text and can be opened with Notepad.

It should be saved as an XLS or XLSX file with password protection. Use a strong password, perhaps the LastPass password, to ensure that the encryption cannot be easily broken.

If you print this file, keep the list in a very safe place such as a deposit box. ⚡

**Send your questions to [george@melbpc.org.au](mailto:george@melbpc.org.au)**



	A	B	C	D	E
1	url	username	password	name	
2	http://192.168.1.1	George			
3	https://accounts.google.com	gskartw...			
4	http://www.acronis.com.au	gskartw...			
5	http://alibaba.com.au/...				
6	https://www...				
7	https://www...				
8	https://www...				
9	http://www...				
10	https://www...				
11	http://www...				
12	http://www...				

## BREAKING NEWS – Our Melb PC Newsgroups

Once you start reading and hopefully posting to the newsgroups (A.K.A. Anywhere, Anytime Group) on your computer, you may want to experiment with doing so on your iPad or Smart phone. In response to a newsgroup question, tips were offered for some free Newsreader utilities as well as setup tips.

*Our technical experts are happy to assist with your computing puzzlements whatever the operating system you use.*

We have 14 newsgroups, each with a different emphasis. You can read some of the newsgroup conversations by logging into <http://forum.melbpc.org.au/newsforum> with your Melb PC username and password.

To read all of the newsgroups, and when you are ready to start a topic, join a conversation or ask for help, you can setup a newsreader utility on your computer. We will help you with this. Here's the place to start <http://member.melbpc.org.au/~anywhere>







## Useful Definitions

By Katharine Shade

### BIOS

(Basic Input/Output System) is the program a computer's microprocessor uses to get the computer system started after you turn it on. It begins after the POST (Power-On Self-Test), checking attached devices (keyboard, mouse etc) and then loading the operating system.

### Boot

The process of loading the operating system and preparing the system for use. The first part of the boot process is controlled by BIOS.

### Image

A complete copy of a disk, sector-by-sector, including all files and the directory structure.

### ISO file

A single file containing the image of an entire CD/DVD.

### Bootable ISO file

An ISO file which includes the file structure of an operating system, enabling you to start up your computer from the burnt disc (requiring the BIOS to specify booting from disc first).

### Disk/Disc

Disk with a "k" came about in the mid-1600s century, influenced by words like "whisk." Disc with a "c" came later that century from the Latin "discus" and the Greek word δίσκος (diskos).

Most people used these two spellings interchangeably until late in the 19th century when they began using disc with a "c" to refer to audio recordings made on a flat plate, i.e. phonograph records. This usage still persists in Compact Disc (CD), spelled with a "c" as well as Digital Video Disc (DVD).

By the 20th century, the k-spelling was more popular in America, while the c-spelling was preferred in the UK.

In the 1940-50s, engineers needed a term to describe the data storage devices of their computers, and they they choose to spell hard disk with a "k".

Generally in computer terminology today, disk refers to magnetic storage while disc refers to optical storage.

This is particularly the case in British English, where the term disk is sometimes regarded as a contraction of diskette. In fact, diskette is a much later word and is a diminutive of disk.

References:

[http://en.wikipedia.org/wiki/Spelling\\_of\\_disc](http://en.wikipedia.org/wiki/Spelling_of_disc)

<http://www.engineerguy.com/comm/3739.htm>



The discobolus motif on an Attic red-figured cup, ca. 490 BC.



Roman bronze reduction of Myron's Discobolus, 2nd Century AD.



Vinyl record



5.25 inch floppy disk



Hard Disk



Audio CD

# lan-slide

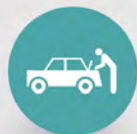
gaming sig



## Where & When?

**MelbPC Moorabbin Venue**

Saturday 11 January 10:00 AM to  
Sunday 12 January 10:00 AM



## What to Bring?

Your gaming ready PC or laptop,  
keyboard, mouse, monitor and  
headphones. We provide the  
networking and power distribution.



## Cost?

\$15.00 for MelbPC Members  
\$25.00 for Non-MelbPC Members  
FREE to spectate and see some really  
cool, unique, performance and gaming  
PCs, Laptops and hardware!



## Competitions & Prizes?

League of Legends 5v5 team (prizes to  
4th place), Call of Duty Black Ops  
(Prizes to 2nd Place), Fun competitions  
with various prizes to win.

**MINECRAFT**

**LEAGUE of  
LEGENDS**

**CALL OF DUTY  
BLACK OPS**



**+ heaps more games**

any questions? visit the website or join our facebook group



[www.lanslide.com.au](http://www.lanslide.com.au)

[fb.com/groups/lanslide](https://fb.com/groups/lanslide)

## Introduction

Groups of members with specific interests meet regularly to discuss and indulge their diverse interests. There are also local groups which cover more general topics. Often you will see presentations by visiting experts on a wide range of subjects.

This is where Melb PC membership really pays off. Enhance your computer knowledge and widen your circle of friends to include other members who have similar interests and, very

often, similar problems to solve. All members are most welcome.

This is part of your Melb PC membership, so feel free to contact any of the conveners listed here. Ask them about future meetings; ask them about the format of their meetings and anything else you need in order to get started.

Many of the groups have their own web page – follow the links from here: <http://groups.melbpc.org.au>

## IS THERE A GROUP NEAR YOU?

### **Any suburb**

Anywhere, Any-time  
(Newsgroups)  
iHelp

### **Avondale Heights**

Essendon

### **Ballarat**

Ballarat

### **Balwyn**

Video Inner East

### **Brighton**

Bayside

### **Gisborne**

Macedon Ranges

### **Hoppers Crossing**

Wyndham

Wyndham Multimedia

### **Ivanhoe**

North East

North East Android

North East Daytime

North East Genealogy

North East Photography/  
Digital Imaging

### **Montrose**

Yarra Ranges

Yarra Ranges Workshop

### **Mount Waverley**

East Workshop

Multimedia

Hardware

Digital Photography

Raspberry Pi

### **Mornington**

Mornington Peninsula

Mornington Peninsula Graphics  
Workshop

Mornington Peninsula Genealogy

### **Narre Warren**

Casey

Casey Workshop

### **Sunbury**

Sunbury

Sunbury New Users,  
Maintenance, Linux

### **Watsonia**

Northern Suburbs Linux

### **Vermont South**

East

Beast (Beginners East)

Geneast (Genealogy East)

## Moorabbin (Melb PC Headquarters)

Access (Database) and Excel

Adobe Video

Communications

E-Book

Everything Apple

Everything iPad

Graphics/Animation

Lan-slide Gaming

Linux & Open Source

Linux & Open Source Workshop

MACE

Making Money on the Internet

Microcontroller

Microcontroller Workshop

Music

Programming

Sony Video Production

WASINT (Web & Software  
Investment Tools)

Website Design

Windows 7&8

## WHAT'S ON THIS WEEK?

Check the calendar on [pages 59-60](#).



## Access and Excel

by Craig Evans

Environment: Windows 7 with Access 2010 and Excel 2010.

During our meeting we discussed:

1. Excel – Sorting can be by columns or rows.
2. Excel – The formulas *Choose* and *Indirect* may be used to create a dynamically changing list.
3. Access – No zooming for Access.
4. Access – Right click in the Table object

group to import (create linked table if you wish), export, manage linked tables (change source data or convert linked to local table).

Our meetings are usually Q&A. Occasionally we have a demonstration of database or spreadsheet magic.

A detailed explanation of the topics above is available on our web page at <http://groups.melbpc.org.au/~access/sigtxt/SIGFEB13.htm>.

## Adobe Video

by Kathy Rouse

### November 2013

#### 2013 Nuffield National Conference, Perth

We looked at the excellent videos on the Vimeo site for the 2013 Nuffield Conference that were videoed, edited and uploaded by Barry Horn, 22 videos in all (<http://vimeo.com/channels/601693/page:1>).

At our next meeting Barry will tell us how he organised his workflow and set up templates, which enabled him to process such a large number of videos in a relatively short time-frame.

#### Adobe Creative Cloud

We had a look at Adobe's Creative Cloud and discussed the pros and cons of subscribing.

Here are some common questions and answers regarding this new way of acquiring Adobe's top-end software.

##### 1. What is Adobe Creative Cloud?

You pay a monthly fee and get to download and use the latest full versions of the Adobe's Creative Suite software (currently well in excess of 30 programs) – or an individual program for a cheaper fee. You also have access to a number of web services including Cloud synchronisation, Adobe's Business Catalyst Web hosting, storage and online collaboration.

##### 2. Are the CC applications web-based, or are they on my computer like most of my software?

They reside on your computer, but instead of installing them from a CD or DVD, you download then from the Adobe Creative Cloud site.

##### 3. Can I install the programs on more than one computer?

Yes. You can install the software on as many computers as you like, but you can only activate the software on two computers at any one time.

##### 4. How much does it cost?

Check Adobe Australia (<http://www.adobe.com/au/products/creativecloud.html>) online for the latest deals and prices.

Currently (as at 6 November 2013):

- New members with a 12 month contract is \$49.99 per month.
- Promotional pricing for existing customers with CS3 and higher is \$29.99.
- New members without a contract is \$74.99 for one month.
- The single-app plan for a full version of one desktop application and a 12 month contract is \$19.99 per month.
- Promotional pricing for existing members of a single-app CS3 and higher is \$9.99.
- Prices are also available for the "Student and Teacher" and "Teams and Enterprise" plans.



Please do your own research and I strongly recommend that you consider trying out any of the CC programs for a free 30 day trial first.

## **5. What happens when a new version of a program is released?**

Adobe now releases new features as soon as they are ready and you can download these updates immediately as part of your subscription. Adobe will not be producing a Creative Suite 7 and intends to migrate their Creative Suite users to their Creative Cloud platform, which requires a monthly subscription.

## **6. After a certain time do I get to keep the software?**

No. You are only renting the software. Once you stop paying the rental you will stop having access.

## **7. Do I have to be connected to the Internet all the time to use the Creative Cloud?**

No. You will need to be online when you install and license your software. If you have an annual membership, you'll be asked to connect to the web to validate your software licenses every 30 days. However, you'll be able to use products for 99 days even if you're offline.

## **8. Encore CS6 is not installed with Creative Cloud. Can I still access Encore for creating DVDs and Blu-ray files?**

There is a special process to download and install Premiere Pro CS6 from the Adobe site in order to have access to Encore and its libraries. You will find step-by-step instructions on the Adobe website.

## **9. Are my files stored in the clouds?**

No. Your files remain on your local hard drive unless you decide you would like to store them in the provided Cloud online storage. Your membership comes with 20 GB of cloud storage. You can choose to synchronise your local files with your Creative Cloud storage.

## **10. Can I share my files in the clouds with someone who is not a member?**

Yes you can, and they will be able to view

files such as Photoshop and Illustrator files without having these programs installed on their computer.

## **11. What happens to my files in the cloud if I cancel my membership?**

If you cancel your paid membership you will still have access to the free level of membership, which provides 2 GB of storage (available to anyone with an Adobe ID). You will have a 90 day grace period to download your files to your local machine and delete online files to get your cloud storage down to 2 GB (or to purchase additional storage separately if you choose). If you leave more than 2 GB of files in your cloud storage for more than 90 days, you may lose access to some or all of your files.

## **Adobe Photoshop/Premiere Elements 12**

Reviews on Photoshop Elements 12 and Premiere Elements 12 can be found at Tom's Guide website (<http://www.tomsguide.com/us/adobe-photoshop-elements-12,review-1909.html>) and <http://www.tomsguide.com/us/adobe-premiere-elements,review-1913.html>).

Both programs are excellent and powerful editors and, unlike the Creative Cloud software, do not require subscribing. They offer most of the tools any of us would ever need.

You will need to shop around for the best price. One of our members was able to buy the software from the USA for \$AU79.

John Thomson found this course of videos on Photoshop Elements 12 on the "Infinite Skills" website very interesting and you can learn quite a bit from the free sample videos (<http://www.infiniteskills.com/training/learning-adobe-photoshop-elements-12.html>).

The course costs \$US50, but there are enough sample videos for people to decide on their value to them.

Learn Premiere Elements 12 on the AdobeTV site (<http://tv.adobe.com/show/learn-premiere-elements-12/>) is a good place to learn and to find out what the latest version has to offer.

## Green Screening using After Effects CC

We watched an instructional video, called Color Keying, from video2brain (<https://www.video2brain.com/en/lessons/color-keying-1>) on the use of the Keylight in Adobe After Effects to remove a green screen background. Another very good tutorial on the technique is covered in the video Using Keylight in After Effects CS4 (<http://tv.adobe.com/watch/digital-video/using-keylight-in-after-effects-cs4/>).

## Uploading and Downloading YouTube Videos

We had a brief view of how easy it is to upload a video onto YouTube and set your desired privacy parameters. If you know someone who does not have a video editor installed on their computer, the YouTube Video Editor does an excellent job of editing and adding effects, captions and music etc.

A number of free programs that allow you to download videos from YouTube were mentioned. The program aTube Catcher can be downloaded from their official site (<http://atube-catcher.dsnetwb.com/video/content/banco-datos-Download-latest-update.html>). More information and links on the program are available on their homepage.

**Make sure, when installing the program, that you uncheck the option to install the "Ask. Toolbar" and to use "Ask.com" as your browser's homepage. Also, decline the offer to install "PC Accelerator."**

## Uninstalling Malware Programs

I recently had some malware that could not be removed by my anti-virus software and could not be uninstalled using Windows. I found the free Revo Uninstaller (<http://www.revouninstaller.com/revouninstaller-free-download.html>) excellent for removing the rogue software.

## Music Sites

There are many sites where you can get music for your videos. Richard Balsillie shared with us three

of his favourites. They have a wide range of music, which is free or very, very cheap. Richard operates by two basic rules in using these sites.

1. Get the appropriate licence (even if it is free). Maybe download or capture a "tryout" copy to put on the timeline, but get a licensed version for the finished video (it is also usually of better quality).
2. Give the appropriate credit (as laid down by the site).

Here are the links:

<http://www.freeplaymusic.com>  
<http://www.audionetwork.com.au>  
<http://www.incompetech.com>

Thank you, Richard, for sharing those with us.

Very much appreciated by everyone.

## SmartSound in Adobe Premiere Elements

SmartSound Quicktracks have been included with Adobe Premiere Elements since, I think, version 7. Yet, it seems many users are unaware of the enormous range of free music available to them with this free plugin from Sonicfire Pro.

When you select "Use SmartSound" in the add music effects options you will initially be taken to the Sonicfire Pro website where you can download the plug-in for Premiere Elements. Instructions on what to do are on the page.

When you first launch SmartSound, choose the "Update" option to download and install the music tracks. There are many free choices and some that you can buy if you so desire.

## A Video with a Surprise

John Thomson showed us a short video involving an extreme close-up of a flower. At the end of the video we had a delightful surprise when a miniature life-form crawled out of the centre of the flower.

## The Final Workshop of the Adobe Video SIG – 5 December 2013

Our next workshop will be the last for the year and the last for this SIG, unless someone else can come forward to offer their services in this area, as I will be unable to run the SIG in 2014.

If you have anything at all that you would like to discuss with the group, this may be your last chance.

You can let me know beforehand if you think it is a subject that may need to be researched.

## ***Beast (East Beginners)***

*by Bryan Paten*

### **October 2013**

Dave Botherway opened the October meeting, mentioning there may be the need to change meeting venue in 2014. Why? Venue Management preferring a weekly booking, limitations being imposed with regards to the installation of speakers and the roof-mounted projector since it has been re-painted, and size limitations for the co-located EAST SIG.

Dave also explained the committee changes at the forthcoming Annual General Meeting of Melb PC – with only the Vice President position being contested.

A discussion on deleting cookies took place with *The Age* newspaper mentioned as one organisation using cookies, to limit the number of free articles that can be read online without readers becoming an online subscriber (their limit is 30 articles per month).

Deleting Cookies removes history, so this is a way to overcome the limitation: Tools – Options – Privacy – Remove Cookies.

Using Private Browsing or an alternative Browser is another way to get around this limitation.

### **Questions**

**How do I move a Word file between platforms (e.g. PC to Mac) without losing formatting?**

Save the file as a RTF (Rich Text File).

### **Intermittent boot problems...**

Could be caused by the capacitor on the motherboard “bubbling” if more than five years old. Alternatively, change the power supply for around \$25-\$30.

### **How do you transfer DOC files, photos, contacts etc from an XP-based computer to a Windows 7-based computer?**

A Belkin data transfer cable is one possible solution for large quantities of data and Dave brought one to the meeting for Bryan to try out.

Bryan was also experiencing a problem with annoying pop-ups and it was suggested he should consider using a pop-up blocker and run an adware scan.

To round off the meeting Dave presented the changes occurring within the Melb PC email service and the current status of the changeover to Microsoft Outlook.com.

Many members will have already been contacted by the office to make the change on their computer, but those who have not received a notification yet should contact the office.

Members should be aware that the previous Melb PC email system had a 10 MB mailbox limit whereas the new Outlook email has a mailbox of 5 GB.

## ***Everything Apple***

*Susan Jensen*

### **November 2013**

What a pleasure it is to watch a person show you very carefully and skilfully a few tricks to make your computing that much easier. As was the case when Damian Vuleta showed the group how to

find a document under a pile of open windows, reveal the Desktop, and take screenshots, filing the resulting picture to a folder.

He also demonstrated what options one has by setting up hot corners. He showed us how to take

screenshots on an iPad and where they are filed by the iOS.

Question time took us to the realm of networked printers, printing from an iDevice and the savings to be made using the Rihac continuous inking system (<http://www.rihac.com.au>).

Another question answered was explaining a good way to print album covers for your jewel boxes using iTunes.

We also chatted about which paper to use for photos and for cards.

Thanks Damian for stepping in at late notice. Next month Annie Cumming will demonstrate some apps on the iPad that can help you teach yourself about other well known applications and operating systems. There won't be a meeting in January.

### ***Geneast (Genealogy East)***

*by Faye Barkla*

#### **October 2013**

The main presentation this month was "Using Excel in Genealogy." Five individual presenters showed us lots of innovative ideas focusing on the advantages of using Excel as opposed to Word in organizing a variety of information.

Brian used Excel as an aid in organizing chronologies and web links. Files can be grouped within individual books and personalised depending on your needs and the information to be included.

Dennis showed us how to use the filter function in Excel. He uses this function for sorting census information. It enables him to easily find and group ages, locations, names etc to quickly access information.

Phil used Excel for sorting and recording his family records.

Yvonne made detailed lists of her family history books and resources held, which meant she could quickly find the information using the filter/sorting process. She also used Excel to sort her genealogy URLs and various other information such as events and sources. She found Excel's format was helpful for locating and sharing specific information in the form of spreadsheets. Yvonne used Excel as a valuable adjunct to her family history program.

Ron's aim in using Excel was to display as much information as possible in the smallest possible space. His entire family tree, along with details

could be printed on a single A4 page. This made sharing much easier and improved access to his data and sources material.

#### **Brick Walls and Breakthroughs**

Brian announced this will be a new segment of our monthly meeting. Comments and questions are invited from members. Please submit questions to Ron who will then forward them to Brian.

A member noted that her recent breakthrough was the discovery of three family members in the one grave, additional information she may not otherwise have found and was certainly not expecting. It was only through a visit to a cemetery and accessing their records that she made the discovery.

#### **November 2013**

Ron announced that a new Excel file comprising NSW BDMs (Births, Deaths and Marriages), with dates ranging from 1780 – 1900 is now available to view. Anyone who is interested should email Ron for details.

There is also the possibility that the three SIGs that currently meet at Vermont – East, Geneast (Genealogy East) and Beast (Beginners East) – will be looking for alternative accommodation next year. If anyone knows of suitable premises could they please contact Ron with suggestions.

The main presentation was delivered by Paul and his topic was "Installing Win 32-bit on Virtual Computer on a 64-bit Win 7 computer." Paul



demonstrated the steps and software needed to complete this task. A slide show with instructions is available for download from the Melb PC website.

The free software is called "VMware Player." You will need a licensed copy of the operating system you wish to run on your virtual machine. Using a virtual machine is a viable alternative for those people who may not have a dual boot system on their computer but require access to older versions of the Windows operating system to run specific software.

<http://www.vmware.com/products/player/>

## **Brian: Brick Walls and Breakthroughs**

Brian used an example of problem solving from his own research. The problem he set out to solve was to identify a witness on his wife's grandfather's wedding certificate. The witness, having the same surname as the groom, was presumed to be the groom's brother. Brian attempted to verify this by checking shipping and death records. His big breakthrough came from contact with a "cousin" who had seen his post on Rootsweb. This person

was able to supply him with more information and confirm the connection.

Allen had a query regarding a surname on a headstone which was different to the legal name of the deceased. It was suggested they check the details of where and with whom the deceased was living just prior to her death. A check of the wills and probate files may also reveal some extra clues as to the differing surname.

Ron asked if there was information available to help trace a relative who was born in Calcutta, India. The said relative was a "Scottish lass" whose father was a Major General in the British East India Company.

Other members with experience in tracing Anglo-Indian ancestry remarked that numerous records are available online and are well documented. A good place to start is "Families In British India Society."

<http://www.new.fibis.org>

Members are asked to forward any suggestions for next year's meetings to Ron, who is also looking for willing people who could give a short talk or demonstration on their special areas of interest.

## **Microcontroller Workshop SIG**

*Geoff Lethbridge*

### **November 2013**

Arduino: Have you heard of the Arduino? If not, come to the SIG and find out about what all the fuss is about. If you have heard of the Arduino and you would like to have a go, we have a nice starter kit you can try. If you come unstuck there are enough of us around to help you get going and having fun.

CNC: Bill and John continued their work on their CNC mills (programmable computer controlled cutting machines).

RPi: Hank was busy working in the corner on his Raspberry Pi but was happy to show us the new RPi he won at the monthly meeting with its nice case.

Printer: Brian had a faulty printer he was trying to bring back to life. Craig joined in on the life

saving activity but when I had to leave I still had not heard the healthy sound of cogs and gears.

MK802 iv: Rob was working on his MK802 iv "Android Smart Mini PC." This looks like a cool device and lots of fun.

<http://www.rikomagic.co.uk>

FPGA (field-programmable gate arrays, or reprogrammable silicon chips): An acquaintance who's father is a long time member said that, "back in the day", Melb PC had the reputation of being at the forefront of technology.

With this in mind I am looking into running a tutorial on FPGAs; these devices are at the forefront of embedded system development today.

[http://en.wikipedia.org/wiki/Field-programmable\\_gate\\_array](http://en.wikipedia.org/wiki/Field-programmable_gate_array)

## Northern Suburbs Linux

by Stephen Davidson

October 2013

### News

A TED online talk on personal robots was shown. This example demonstrated the computer power of an iPhone which was used to control a mobile caterpillar base that it was plugged into, as a robot of sorts. The iPhone had rudimentary software which enabled it to respond to certain stimuli, such as:

- putting your face too close to the iPhones screen which would cause the iPhone to tilt away from you and the base to move away from you.
- stroking the screen gently would result in the face on the screen smiling.

- Controlling the iPhone and base wirelessly from a tablet, remotely accessing the camera for vision and the microphone for sound.

Although the demonstration was using an iPhone, the concept of a small inexpensive personal robot would be amenable to any other realisation within a different software ecosystem.

### Articles

The website of PCLinuxOS ([www.pclinuxos.com](http://www.pclinuxos.com)) have downloadable monthly magazines available that have some very good articles of interest suiting Linux beginners to medium users.

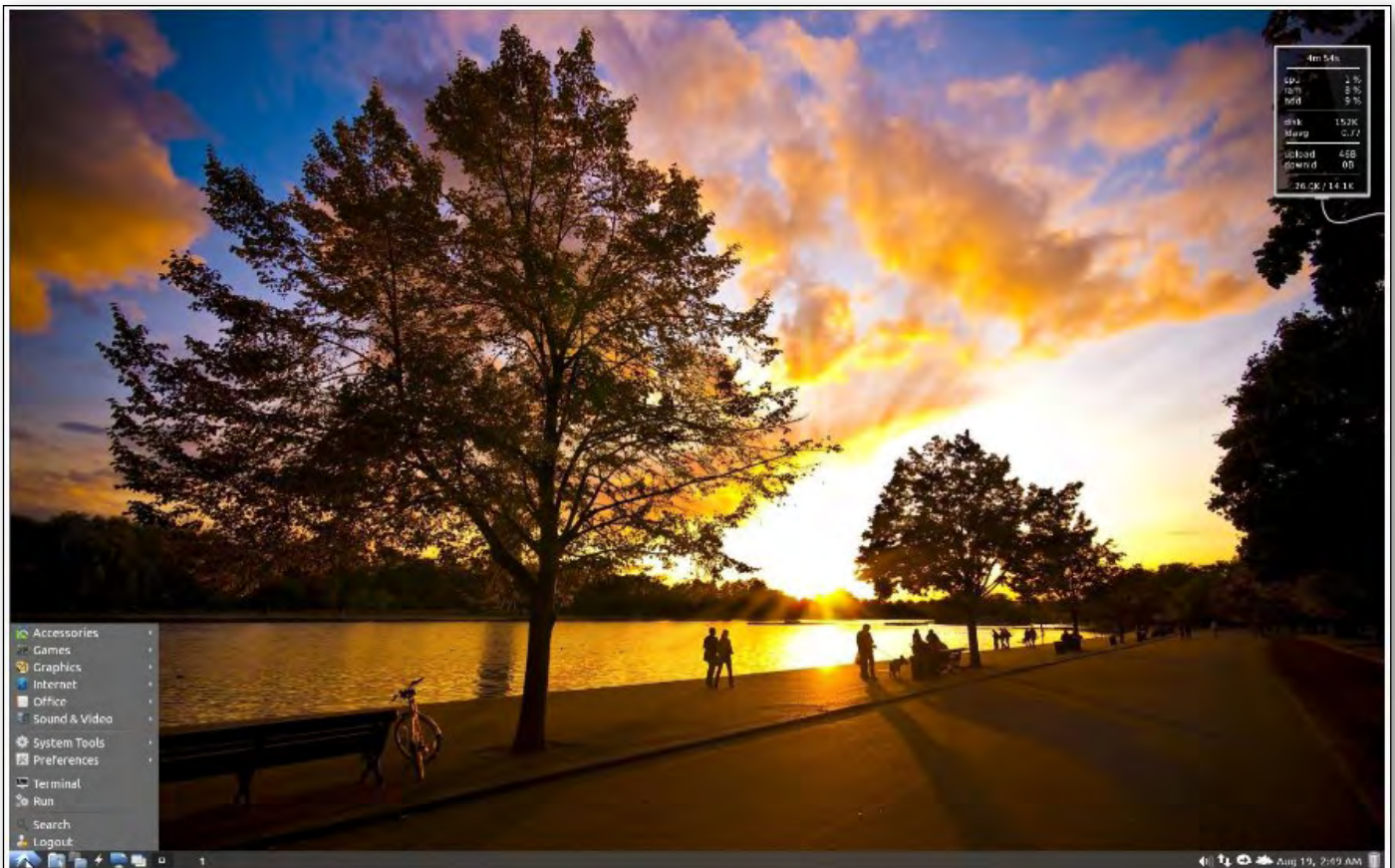


Figure 1:  
LXLE desktop with a sunset theme background. Note the small system monitor at top right which is configurable.

## Lightweight distros

Trevor Jacobs introduced us to two relatively new distributions he uses. Although considered lightweight, they include a generous suite of quality programs on the approx 1.3 GB ISOs. They are lightweight in that they are light on the required resources.

### LXLE

The first distro was LXLE (<http://lxle.net>) which used the LXDE desktop and is based on Ubuntu 12.04.3, the long term release and uses its repositories. It was released in August 2013. The suggestion was made that it might be a good replacement for Windows XP for those users who surf the web, send email and write documents and spreadsheets using LibreOffice or similar. It gained a very favourable review on Distrowatch (<http://distrowatch.com>).

At logon you get a choice of what type of desktop you want it to resemble. Desktops available closely resemble the popular Windows, Macintosh and Linux setups, or you can invent your own layout. The desktops also have a set of finely crafted backgrounds – see Figures 1 and 2.

The default file manager is PCManFM: a minimalist single pane manager with the usual assortment of menu options. Trevor made the suggestion the Gnome Commander (similar to Linux Midnight Commander or the excellent Windows Total Commander) would be a good file manager to install as it has a two pane presentation that makes copying and moving files easier.

PCManFM has a Fast Forecast option to display the weather information, but Trevor had not been

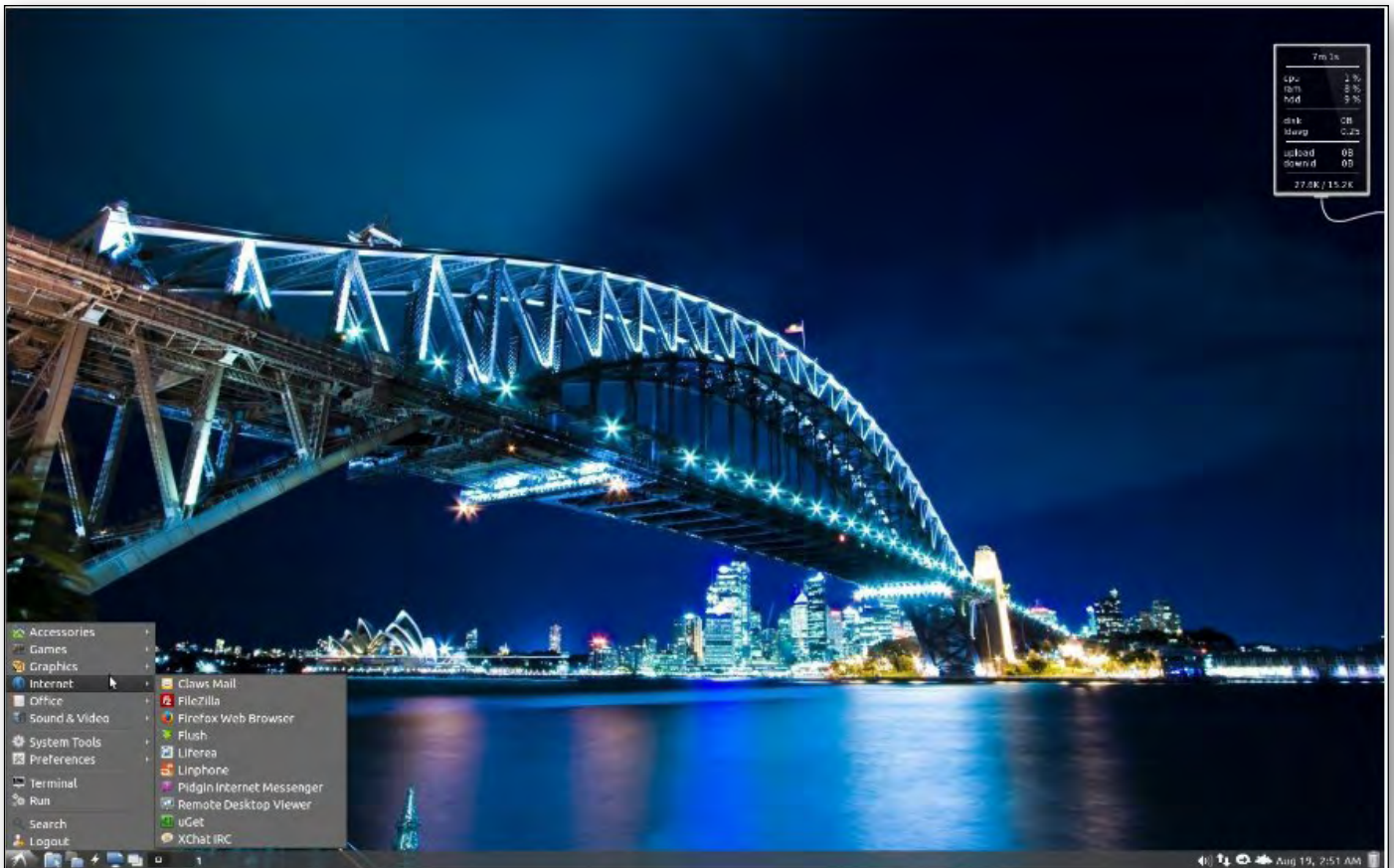


Figure 2:  
LXLE desktop with an Australian theme.



able to find out how to change it from New York settings. It also has a side bar program launcher that can be placed on the far left (or anywhere else) which contains easily configured Quicklaunch icons. It is based on LXPanel 0.58.

## LinuxLite

The second distro was LinuxLite ([www.linuxliteos.com](http://www.linuxliteos.com)) which uses XCFE as its desktop. It is a 32-bit or 64-bit 750 MB ISO download.

Trevor made the comment that he found LinuxLite just works the first time when he played various video and audio files and didn't need to download codecs or programs.

LinuxLite is also based on Ubuntu 12.04.3 long-term release and uses its repositories. As with XCFE desktops, you can access programs from the menu at the bottom left on the panel or you can right click anywhere on the desktop to get a menu of programs which you can then launch.

The menu has much the same menu options as with other distros. The panel along the bottom is XFCEPanel. The file manager used is Thunar 1.2.3 with standard menus.

Again LinuxLite would make a good Windows XP replacement for those who just browse the web, use email and produce office documents using LibreOffice.

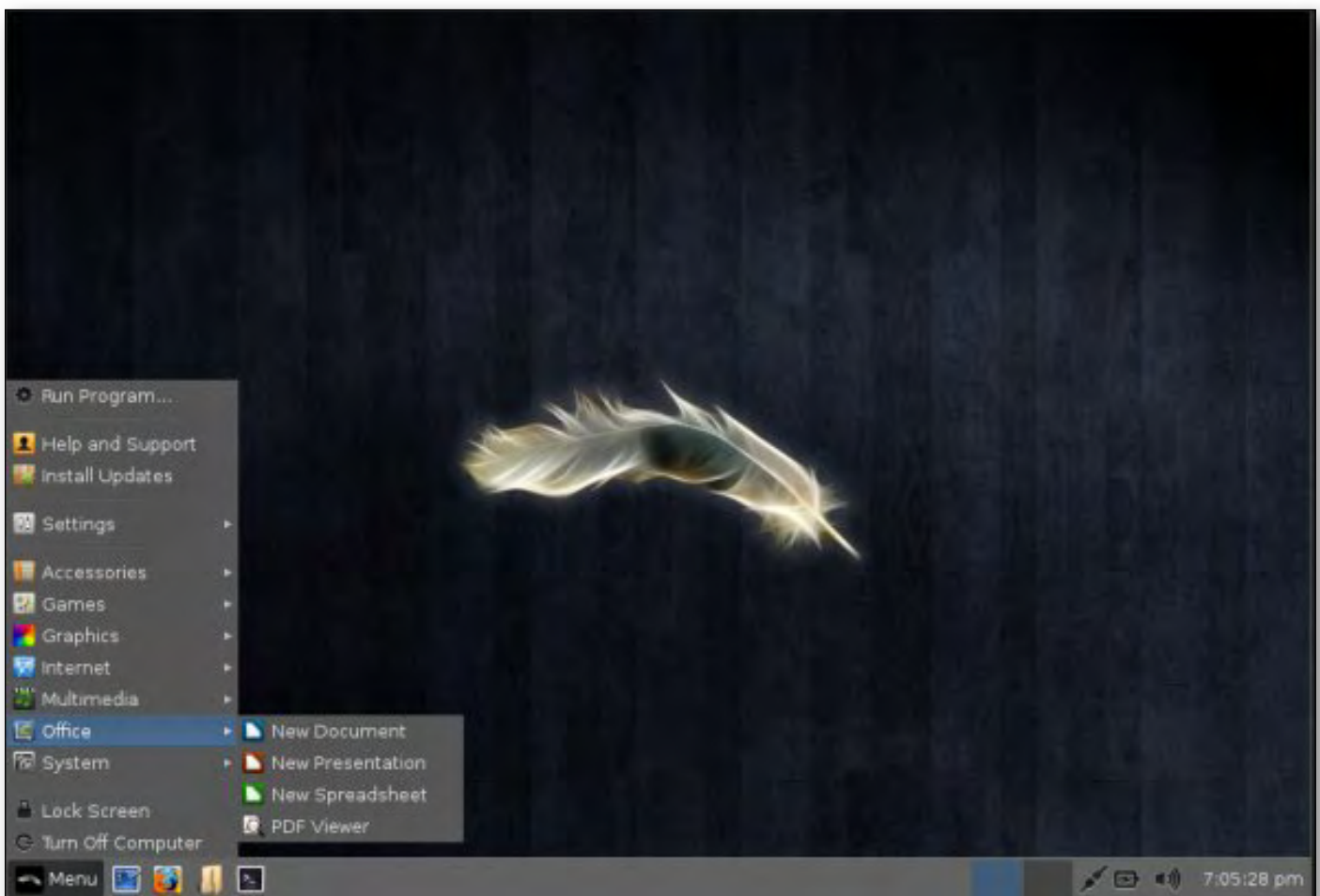


Figure 3:  
*LinuxLite default desktop showing the main menu.*





Figure 4:  
*LinuxLite desktop displaying the settings dialogue.*

## Windows 7 & 8

*by Kathy Rouse*

### November 2013

Twenty-six attended the third Windows 7 & 8 SIG Workshop. The numbers are growing and, by the feedback received, will continue to increase in 2014. Jan Weiner will take over the running of the workshops next year.

The computers in the training room we used for the workshop had both Windows 7 and Windows 8.1 installed and this was a great help in being able to have a hands-on experience. Many of the participants were able to bring along their own personal laptops, which was a big help.

### Windows 7 – Some Tips and Tweaks

In the morning session we looked at some of the new features that were introduced in this version of Windows and some of the ways we could personalize the operating system.

The following is just some of what we covered.

- If you right click on the desktop, and choose “Personalize”, you are taken to an area where you can change the visuals and sounds on your computer.
- Change the behaviour of the Start button: click the Windows Orb>right-click the Shut down button and choose a different default

behaviour for this button, such as Sleep.

- Rather than using Ctrl + left mouse click to save non-contiguous items, an easier way is to use check boxes. In Windows 7, type "Folder Options" in the Start search box, click on Folder Options – View tab and scroll down and put a tick next to the option "Use Check boxes to select items."
- Changing the default "Save" folder: just include the folder that you want to save to in the relevant Library and then choose it as the default folder for that library.
- In Windows 7 the Search function was greatly improved. We looked at how to search from the Start Search box, in specific Libraries and folders, continue your searches on the Internet and even save searches for later viewing.

## Windows 8.1 – Introducing the Latest Windows Operating System

We looked at some of the changes that have been introduced in Windows 8.1, first watching

a very good summary of all the changes on a the YouTube video "Windows 8.1 Demo (Final – Now Available)" ([http://youtu.be/P8wrHn\\_kLSE](http://youtu.be/P8wrHn_kLSE)).

### Some of the changes include:

- The Start button is back, but not exactly as many traditional users were expecting.
- You can now boot directly to the Desktop rather than the Start screen.
- The organization of the start screen has improved.
- The Search function has been improved and now searches "Everywhere."

We looked at how to personalize our Windows 8.1 interface and how to navigate the new system, especially toggling back and forth from the Desktop programs to the new Metro apps style Start Screen.

The new ribbon in File Explorer makes many of the commands a lot easier to access, and the Windows key on your keyboard is a handy way to quickly go back to the start screen at any time.

## Yarra Ranges

by John Sapsford

### October 2013

New equipment: A heart monitor watch for \$10. A look at Samsung's new ATIV Tablet with Windows 8 installed. Six members indicated they had bought an iPad tablet.

There was a discussion about printer ink cartridges and unwanted pop-up advertisements appearing on web browsers.

Bryan drew members' attention to the article in the October *Fifty-Plus News* about the security problems that may arise when Microsoft ceases supporting Windows XP in April 2014.

A discussion followed about voting at the AGM and changes to the Melb PC email service.

Bryan reported on a "How to Make Money on the Internet" SIG meeting. The guest speaker explained the establishment and current success of his online business called "Sexy Fragrances."

After morning tea we watched a short video called "How the Internet Works" (<http://www.wimp.com/internetworks/>).

Some members told of their experiences with the "Men's Shed" organization.

Other topics included the Windows Easy Transfer Cable, how to get a driver for Brother Printer and computer maintenance, including hard drive defragmentation and the use of a registry cleaner.

# Everything Apple

Convener:

Susan Jensen 9885 7060

Assistant Convener:

Damian Vuleta 9509 9992

E-mail to: [applesig@melbpc.org.au](mailto:applesig@melbpc.org.au)

or [everything-apple@ausom.net.au](mailto:everything-apple@ausom.net.au)

A joint venture between MelbPC and AUSOM. The emphasis will be on Apple iDevices (iPod, iPhone, iPad, AppleTV, Time Capsule Airport Extreme) and helping people understand the Mac environment.

## Next Meeting: 10<sup>th</sup> December

2:00 pm

### Learning from your iPad

*Presented by Annie Cumming*

If you need assistance with recently released versions of your everyday software, your iPad can help.

Annie will show you how to improve your skills in Microsoft Office and Windows 8 with app tutorials, online saved webpages and PDF formatted documents. Use the iPad alongside your PC and you can update your skills in these and other programs.

Annie will introduce you to apps that help you help others enjoy their iPad experience.

There will be a 15-minute break for tea and coffee, and time for questions afterwards.



**Second Tuesdays (except January),**

**2:00 pm–4:00 pm**

**Moorabbin Interest Group Room**

**479 Warrigal Road, Moorabbin**

# GROUP DETAILS

Purple headings are special interest groups.

Blue headings are special interest groups at Melb PC Headquarters, Moorabbin.

Green headings are local/general groups.

Red indicates a recent change.

Details of the interest groups are also available at: <http://groups.melbpc.org.au>

Or download the full descriptions as a PDF file:

<http://ccedesign.com.au/melbpc/melbpc-landing-page.html>

## ACCESS (DATABASE) AND EXCEL

[access@melbpc.org.au](mailto:access@melbpc.org.au)

<http://groups.melbpc.org.au/~access/>

**Convener** Craig Evans [Craig\\_Evans@racv.com.au](mailto:Craig_Evans@racv.com.au)

**Date** Second Monday of each month  
(except January)

**Time** 6.30pm-8.30pm

**Venue** Melb PC Headquarters  
Level 1, 479 Warrigal Rd, Moorabbin

## ADOBE VIDEO

[adobevideo@melbpc.org.au](mailto:adobevideo@melbpc.org.au)

<http://groups.melbpc.org.au/~adobevideo/>

**Convener** Kathy Rouse 9580 6386

**Date** First Thursday of each month  
(except January)

**Time** 1.30pm-4pm

**Venue** Melb PC Headquarters  
Level 1, 479 Warrigal Rd, Moorabbin

## ANYWHERE, ANY-TIME (NEWSGROUPS)

[anywhere@melbpc.org.au](mailto:anywhere@melbpc.org.au)

<http://groups.melbpc.org.au/~anywhere/>

**Convener** Kevin Martin (evening only)  
5964 7627 or 0407 343 162

**Time** 24/7

**Venue** Melb PC Newsgroups and Forum

## BALLARAT

[ballarat@melbpc.org.au](mailto:ballarat@melbpc.org.au)

**Convener** Alan Pittard 5339 4235

**Date** First Thursday of each month

**Time** 7.30pm-9.45pm

**Venue** Midlands Golf Club Heinz Lane Ballarat

## BAYSIDE

[bayside@melbpc.org.au](mailto:bayside@melbpc.org.au)

<http://groups.melbpc.org.au/~bayside/>

**Convener** John Morris 9583 4095

Graham Ackland 9589 6229

**Date** Third Thursday of each month

**Time** 10am-12 noon main meeting

12.00-1pm beginners' subgroup

**Venue** St Stephens Church Hall, Cnr Cochrane  
Street and North Road Brighton.

## CASEY

[casey@melbpc.org.au](mailto:casey@melbpc.org.au)

<http://groups.melbpc.org.au/~casey/>

**Convener** Jan Whitaker 9705 9009

Jan Weiner 9560 6924

**Date** Second Friday each month  
(except January)

**Time** 12.30pm-3pm

**Venue** Narre Warren Library (Fountain Gate)  
Overland Drive Narre Warren 3805  
9704 7696 Melway: Map 110 Ref D4

## CASEY WORKSHOP

**Convener** Jan Weiner 9560 6924

Jan Whitaker 9705 9009

**Date** Fourth Friday of each month

**Time** 12.30-3.00pm

**Venue** Narre Warren Library (Fountain Gate)  
Overland Drive Narre Warren 3805  
9704 7696 Melway: Map 110 Ref D4



## COMMUNICATIONS

[comms@melbpc.org.au](mailto:comms@melbpc.org.au)

**Convener** Philip Lew 9822 2998 (BH)  
**Date** Second Wednesday of each month (except January)  
**Time** 7pm-9.30pm  
**Venue** Melb PC Headquarters  
Level 1, 479 Warrigal Rd, Moorabbin

## DIGITAL PHOTOGRAPHY

**Convener** Ian Bock 9807 3701  
[bockey@melbpc.org.au](mailto:bockey@melbpc.org.au)  
**Date** Third Friday of each month (except December)  
**Time** 10am-12noon  
**Venue** Wadham House 52 Wadham Parade  
Mount Waverley Melway 61 E12

## E-BOOK

[ebook@melbpc.org.au](mailto:ebook@melbpc.org.au)

**Convener** Dennis Fieldhouse 9557 6847  
John Swale 0417 530 766  
**Date** Second Thursday of each month (except January)  
**Time** 7pm  
**Venue** Melb PC Headquarters  
Level 1, 479 Warrigal Rd, Moorabbin

## EAST

[east@melbpc.org.au](mailto:east@melbpc.org.au)

<http://groups.melbpc.org.au/~east>

**Convener** Paul Woolard 9877 1059  
Ian Dewhurst 0438 480 500  
**Date** Second Wednesday of each month (except January)  
**Time** 7.30pm-10pm  
**Venue** Vermont South Community House  
Karobran Drive Vermont South  
Melway 62 G7

## BEAST (BEGINNERS EAST)

[beast@melbpc.org.au](mailto:beast@melbpc.org.au)

**Convener** Dave Botherway  
**Date** Third Sunday (February to November)  
Second Sunday in December (no January meeting).  
**Time** 10am-12.30pm  
**Venue** Vermont South Community Centre  
Karobran Drive Vermont South  
Melway 62 G7

## GENEAST (GENEALOGY EAST)

[geneast@melbpc.org.au](mailto:geneast@melbpc.org.au)

**Convener** Ron Harper [rharper@melbpc.org.au](mailto:rharper@melbpc.org.au)  
**Date** Third Sunday (February to November)  
Second Sunday in December (no January meeting).  
**Time** 1pm-3.30pm  
**Venue** Vermont South Community Centre  
Karobran Drive Vermont South M:62 G7

## EAST WORKSHOP

[eastwsh@melbpc.org.au](mailto:eastwsh@melbpc.org.au)

<http://groups.melbpc.org.au/~eastwsh>

**Convener** Ken Gubbins 9842 8875  
Jeff Webster 9078 0879  
**Date** Second Sunday  
**Time** 10am-2pm  
**Venue** Wadham House 52 Wadham Parade  
Mt Waverley rear of Library. Melway 61 E12.

## ESSENDON

[essendon@melbpc.org.au](mailto:essendon@melbpc.org.au)

<http://groups.melbpc.org.au/~essendon>

**Convener** John Guegan 9317 7114  
**Date** First, second, and third Friday  
**Time** 9:30am-12 noon  
**Date** Fourth Wednesday (except January)  
**Time** 7pm-9pm  
**Venue** Nancye Kirchner Neighbourhood Centre,  
Doyle Street Avondale Heights  
Melway 27 D6

First Friday: Main meeting. Second Friday: Open Forum.  
Fourth Friday: Varies (check website for details). Fourth \  
Wednesday Night: Multimedia/General.

## EVERYTHING APPLE

[everything-apple@ausom.net.au](mailto:everything-apple@ausom.net.au)

**Convener** Susan Jensen 9885 7060  
Damian Vuleta 9509 9992  
**Date** Second Tuesday each month (except Jan)  
**Time** 2pm-4pm  
**Venue** Melb PC Headquarters  
Level 1, 479 Warrigal Rd, Moorabbin

## EVERYTHING IPAD

[everything-ipad@ausom.net.au](mailto:everything-ipad@ausom.net.au)

**Convener** Dick Johnson 9857 7362  
**Date** Third Wednesday (except January)  
**Time** 2pm-4pm  
**Venue** Melb PC Headquarters  
Level 1, 479 Warrigal Rd, Moorabbin

# GROUP DETAILS

## GRAPHICS/ANIMATION

[graphics@melbpc.org.au](mailto:graphics@melbpc.org.au)

<http://groups.melbpc.org.au/~graphics>

**Convener** Yahya Abdal-Aziz  
Roger Wragg [rdwragg@fastmail.fm](mailto:rdwragg@fastmail.fm)  
**Date** Third Monday of each month  
**Time** 7.30pm-9.30pm  
**Venue** Melb PC Headquarters  
Level 1, 479 Warrigal Rd, Moorabbin

## HARDWARE

**Convener** Kelvin Cording 9438 1047  
[kcording@bigpond.net.au](mailto:kcording@bigpond.net.au)  
Bill Dair 9802 4242  
[wedair@melbpc.org.au](mailto:wedair@melbpc.org.au)  
**Date** Second Friday (except January)  
**Time** 10am-12 noon  
**Venue** Wadham House 52 Wadham Parade  
Mount Waverley Melway 61 E12.

## IHELP

[ihelp@melbpc.org.au](mailto:ihelp@melbpc.org.au)

<http://groups.melbpc.org.au/~ihelp>

**Convener** Rotational  
(check with office for current details)  
**Date** Approximately 6 monthly  
**Time** 7-9pm  
**Venue** Melb PC Headquarters  
Level 1, 479 Warrigal Rd, Moorabbin

## LAN-SLIDE GAMING

<http://www.lanslide.com.au>

<http://www.facebook.com/groups/lanslide>

**Convener** Brendon Taylor, Craig Mattson  
**Date** (TBA)  
**Time** 26-hour gaming event  
10am Saturday until 12pm Sunday  
**Venue** Melb PC Headquarters  
Level 1, 479 Warrigal Rd, Moorabbin

## LINUX AND OPEN SOURCE

[linux@melbpc.org.au](mailto:linux@melbpc.org.au)

<http://member.melbpc.org.au/~linux>

**Convener** James Cox 9885 5503  
**Date** **Second Tuesday (except Jan)**  
**Time** 7pm-9.30pm  
**Venue** Melb PC Headquarters  
Level 1, 479 Warrigal Rd, Moorabbin

## LINUX AND OPEN SOURCE WORKSHOP

[linux@melbpc.org.au](mailto:linux@melbpc.org.au)

<http://member.melbpc.org.au/~linux>

**Convener** James Cox 9885 5503  
**Date** **Second Tuesday (except Jan)**  
**Time** **4pm-7pm**  
**Venue** Melb PC Headquarters  
Level 1, 479 Warrigal Rd, Moorabbin

## MACE (MELBOURNE ATARI COMPUTER ENTHUSIASTS)

[mace@melbpc.org.au](mailto:mace@melbpc.org.au)

**Convener** Andrew Boschan 5426 1917 AH  
**Date** Third Sunday of each month  
**Time** 10am-2pm  
**Venue** Melb PC Headquarters  
Level 1, 479 Warrigal Rd, Moorabbin

## MACEDON RANGES

[mrgpc@melbpc.org.au](mailto:mrgpc@melbpc.org.au)

**Convener** John Hunter 0406 868 226  
**Date** Third Sunday of each month  
**Time** 2-4pm  
**Venue** Further Education Centre  
18 Hamilton St Gisborne

## MAKING MONEY ON THE INTERNET

[amsig@melbpc.org.au](mailto:amsig@melbpc.org.au)

<http://groups.melbpc.org.au/~amsig>

**Convener** George Skarbek 9561 6362  
Paul Hemsworth 9337 4947  
**Date** Second Saturday of each month  
(except December and January)  
**Time** 10am-12 noon  
**Venue** Melb PC Headquarters  
Level 1, 479 Warrigal Rd, Moorabbin

## MICROCONTROLLER

[micro@melbpc.org.au](mailto:micro@melbpc.org.au)

**Convener** Philip Lew 0418 567 019  
John Hollow 0417 031 164  
**Date** Second Wednesday (except January)  
**Time** 7pm-9.30pm  
**Venue** Melb PC Headquarters  
Level 1, 479 Warrigal Rd, Moorabbin

## MICROCONTROLLER WORKSHOP

[microws@melbpc.org.au](mailto:microws@melbpc.org.au)

**Convener** Robert Brown, Geoff Lethbridge,  
John Shirt  
**Date** Second Saturday (except Jan)  
Fourth Saturday (except December)  
**Time** 12noon-5pm  
**Venue** Melb PC Headquarters  
Level 1, 479 Warrigal Rd, Moorabbin

## MORNINGTON PENINSULA

[pennsula@melbpc.org.au](mailto:pennsula@melbpc.org.au)

<http://groups.melbpc.org.au/~pennsula>

**Convener** (interim) Lindsay Wiles 9775 3069  
[lwiles@westnet.com.au](mailto:lwiles@westnet.com.au)  
(interim) Ian Thomson  
[iaroth@netspace.net.au](mailto:iaroth@netspace.net.au)  
(interim) Colin Ackehurst  
[colin\\_a\\_ackehurst@bigpond.com](mailto:colin_a_ackehurst@bigpond.com)  
**Date** Third Monday of each month (except Dec)  
**Time** 9.30am Day Meeting  
12.30pm Graphics Workshop  
2.30pm Genealogy  
**Venue** Mornington Information Centre  
320 Main St Mornington

## MORNINGTON PENINSULA GRAPHICS WORKSHOP

[pennsula@melbpc.org.au](mailto:pennsula@melbpc.org.au)

<http://groups.melbpc.org.au/~pennsula>

**Date** Third Monday of each month (except Dec)  
**Time** 12.30pm  
**Venue** Mornington Information Centre  
320 Main St Mornington

## MORNINGTON PENINSULA GENEALOGY

[pennsula@melbpc.org.au](mailto:pennsula@melbpc.org.au)

<http://groups.melbpc.org.au/~pennsula>

**Date** Third Monday of each month (except Dec)  
**Time** 2.30pm  
**Venue** Mornington Information Centre  
320 Main St Mornington

## MULTIMEDIA

[multimed@melbpc.org](mailto:multimed@melbpc.org)

<http://www.melbpc.org>

**Convener** John Hall 9803 2731  
[johnhall@melbpc.org.au](mailto:johnhall@melbpc.org.au)  
Kelvin Cording 9438 1047  
[kcording@bigpond.net.au](mailto:kcording@bigpond.net.au)  
**Date** First Friday of each month  
(except January)  
**Time** 10am-12 noon  
**Venue** Wadham House 52 Wadham Parade  
Mount Waverley Melway 61 E12.

## MUSIC

[music@melbpc.org.au](mailto:music@melbpc.org.au)

<http://groups.melbpc.org.au/~music>

**Convener** Yahya Abdal-Aziz, David Godfred  
**Date** Third Thursday of each month  
**Time** 7.30pm-9.30pm  
**Venue** Melb PC Headquarters  
Level 1, 479 Warrigal Rd, Moorabbin

## NEWSGROUPS

See Anywhere, Any-time (Newsgroups).

## NORTH EAST

[neast@melbpc.org.au](mailto:neast@melbpc.org.au)

<http://groups.melbpc.org.au/~neast>

**Convener** Lynnette Hammet  
[lynnhammet@netspace.net.au](mailto:lynnhammet@netspace.net.au); Choi Lai  
**Date** Fourth Tuesday of each month  
(except December)  
**Time** 7.30pm-9.30pm  
**Venue** Uniting Church Hall 19 Seddon Street  
Ivanhoe, parking at the rear, Melway 31 F8

## NORTH EAST DAYTIME

[neday@melbpc.org.au](mailto:neday@melbpc.org.au)

**Convener** Colin Lampshire 9857 5372  
or 0413 640 408 [lampshir@melbpc.org.au](mailto:lampshir@melbpc.org.au)  
**Date** Second Thursday of every month  
(except January)  
**Time** 10am-12.15pm  
**Venue** Uniting Church Hall 19 Seddon Street  
Ivanhoe, parking at the rear, Melway 31 F8.

Every alternate month we specialise in issues relating to  
Photography/Digital Imaging.



# GROUP DETAILS

## NORTH EAST ANDROID

**Convener** Colin Lampshire 9857 5372  
or 0413 640 408 [lampshir@melbpc.org.au](mailto:lampshir@melbpc.org.au)  
Kelvin Cording 9438 1047  
**Date** Third Wednesday of each month  
(except January)  
**Time** 10am to 12 noon  
**Venue** Uniting Church Hall 19 Seddon Street  
Ivanhoe, parking at the rear, Melway 31 F8.

## NORTH EAST GENEALOGY

[negen@melbpc.org.au](mailto:negen@melbpc.org.au)  
<http://member.melbpc.org.au/~negen/>  
**Convener** Allan Medforth 9410 9034  
Vilma Stargatt  
**Date** First Tuesday of each month  
(except January)  
**Time** 10am-12.45pm  
**Venue** Uniting Church Hall 19 Seddon Street  
Ivanhoe, parking at the rear, Melway 31 F8.

## NORTH EAST PHOTOGRAPHY/DIGITAL IMAGING

[neday@melbpc.org.au](mailto:neday@melbpc.org.au)  
**Convener** Colin Lampshire 9857 5372  
or 0413 640 408 [lampshir@melbpc.org.au](mailto:lampshir@melbpc.org.au)  
**Date** Second Thursday of every second month  
(except January)  
**Time** 10am-12.15pm  
**Venue** Uniting Church Hall 19 Seddon Street  
Ivanhoe, parking at the rear, Melway 31 F8

## NORTHERN SUBURBS LINUX

[nslig@melbpc.org.au](mailto:nslig@melbpc.org.au)  
<http://groups.melbpc.org.au/~nslig>  
**Convener** David Hatton, Stephen Davidson  
**Date** Third Monday of each month  
(except December)  
**Note:** **The November meeting will be postponed from the normal 3rd Monday (21 Nov) to Monday 2 December. The change has been necessary due to previous room bookings.**  
**Time** 7.30pm to 9.30pm  
**Venue** Community Meeting Room Watsonia  
Library, Ibbotson St Watsonia Melway 20 E4.

## PROGRAMMING

[program@melbpc.org.au](mailto:program@melbpc.org.au)  
**Convener** Mohan Gupta 0421 214 081  
Roger Plant 0403 789 593  
**Date** Fourth Tuesday of each month  
**Time** 6.30pm-9pm.  
**Venue** Melb PC Headquarters  
Level 1, 479 Warrigal Rd, Moorabbin

## RASPBERRY PI

**Convener** John Hall 9803 2731  
[johnhall@melbpc.org.au](mailto:johnhall@melbpc.org.au)  
Lance Lloyd 9884 5559  
[lance.melbpc@fastmail.fm](mailto:lance.melbpc@fastmail.fm)  
**Date** Fourth Friday of the month  
(except December)  
**Time** 10am-12noon  
**Venue** Wadham House, 52 Wadham Pde  
Mount Waverly, Melway 61 E12

## SONY VIDEO PRODUCTION

**Convener** Roger Wragg [rdwragg@fastmail.fm](mailto:rdwragg@fastmail.fm)  
Bob Flack  
**Date** Second Wednesday of the month  
**Time** 10am-12 noon  
**Venue** Melb PC Headquarters  
Level 1, 479 Warrigal Rd, Moorabbin

## SUNBURY

[sunbury@melbpc.org.au](mailto:sunbury@melbpc.org.au)  
<http://groups.melbpc.org.au/~sunbury>  
**Convener** Kevin Day 9744 2514  
Kevin Hale 9740 5786  
**Date** Every Thursday  
**Time** 9.30am-12 noon  
**Date** First Thursday:  
New users, but everyone welcome  
Second Thursday:  
Maintenance, problems discussed, some-  
times solved  
Third Thursday:  
Main meeting, demos, presentations etc.  
Fourth Thursday:  
Linux, a new experience  
Fifth Thursday (when there is one):  
Maintenance  
**Venue** Sunbury Senior Citizens Centre (back room)  
8 O'Shannassy Street Sunbury Melway 382 E4.

## SUNBURY: NEW USERS, MAINTENANCE, LINUX

[sunbury@melbpc.org.au](mailto:sunbury@melbpc.org.au)

<http://groups.melbpc.org.au/~sunbury>

**Convener** Kevin Day 9744 2514  
Kevin Hale 9740 5786

**Date** Every Thursday

**Time** 9.30am-12 noon

**Date** First Thursday: New users, but everyone welcome  
Second Thursday: Maintenance, problems  
Third Thursday: Main meeting, demos, presentations etc.  
Fourth Thursday: Linux, a new experience  
Fifth Thursday (when there is one): Maintenance

**Venue** Sunbury Senior Citizens Centre (back room) 8 O'Shannassy Street Sunbury Melway 382 E4.

## VIDEO INNER EAST

<http://users.tpg.com.au/adslo8nb/vie/index.html>

**Convener** Richard Balsillie 9809 4116

**Date** Fourth Monday of each month (except December)

**Time** 7pm-9.30pm

**Venue** Balwyn Library Meeting Room  
336 Whitehorse Road Balwyn.

## WASINT (WEB AND SOFTWARE INVESTMENT TOOLS)

[wasint@melbpc.org.au](mailto:wasint@melbpc.org.au)

<http://groups.melbpc.org.au/~wasint>

**Convener** Richard Solly

**Date** Second Tuesday (except January)

**Time** 10.30am-12.30pm

**Venue** Melb PC Headquarters  
Level 1, 479 Warrigal Rd, Moorabbin

## WEBSITE DESIGN

[webdesign@melbpc.org.au](mailto:webdesign@melbpc.org.au)

<http://groups.melbpc.org.au/~webdesign>

**Convener** Fleur Stephens 0407 330 963

**Date** Fourth Sunday (except December and January)

**Time** 2pm-4pm

**Venue** Melb PC Headquarters  
Level 1, 479 Warrigal Rd, Moorabbin

## WINDOWS 7&8

**Convener** Jan Weiner (SIG Coordinator) 9560 6924

**Date** Third Saturday of each month (except January)

**Time** Windows 7 10am-12pm  
Windows 8 1pm-3pm

**Venue** Melb PC Headquarters  
Level 1, 479 Warrigal Rd, Moorabbin

## WYNDHAM

[wynd@melbpc.org.au](mailto:wynd@melbpc.org.au)

<http://groups.melbpc.org.au/~wynd>

**Convener** Chris Hughes 9731 0891, John Healey

**Venue** Room 3 Central Park Community Centre  
Lonsdale Circuit off Franklin Blvd.  
Hoppers Crossing. Melway 206 J-1.

**Date** Third Tuesday of each month (except December and January)

**Time** 7.30pm-9.30pm

## WYNDHAM MULTIMEDIA

[wynd@melbpc.org.au](mailto:wynd@melbpc.org.au)

<http://groups.melbpc.org.au/~wynd>

**Convener** Chris Hughes 9731 0891, John Healey

**Date** Second Monday of each month (except January)

**Time** 7.30pm-9.30pm

**Venue** Room 3 Central Park Community Centre  
Lonsdale Circuit off Franklin Blvd.  
Hoppers Crossing. Melway 206 J-1.

## YARRA RANGES

[yrig@melbpc.org.au](mailto:yrig@melbpc.org.au)

<http://groups.melbpc.org.au/~yrig>

**Convener** Bryan Paten 0429 430 640  
Shane Mason 9733 5390

**Date** Fourth Tuesday (except December)

**Time** 9.15am (followed by the Workshop)

**Venue** Japara Community House  
13 Leith Road Montrose Melway 52 D7

## YARRA RANGES WORKSHOP

[yrig@melbpc.org.au](mailto:yrig@melbpc.org.au)

<http://groups.melbpc.org.au/~yrig>

**Convener** Bryan Paten 0429 430 640  
Shane Mason 9733 5390

**Date** Fourth Tuesday (except December)

**Time** After the 9.15am main meeting

**Venue** Japara Community House  
13 Leith Road Montrose Melway 52 D7

### Windows 7 & 8 SIG Workshop

**Date** Saturday 21 February 2013

**Time** 10am-3pm

**Venue** Melb PC Headquarters

Level 1, 479 Warrigal Rd, Moorabbin 3189

#### **MORNING SESSION 10AM-12 NOON**

We will continue to explore Windows 7 and we'll share some handy tips and explore the options available in Windows 7.

#### **AFTERNOON SESSION 1-3PM**

The afternoon sessions will introduce the new Windows 8.1 and we'll examine some of the changes and ways we can best navigate the new system.

Our November workshop was a great success and I will endeavour to consolidate the previous meetings at our February workshop. I am now standing in for Kathy Rouse who has opened the SIG but is unable to continue in the new year.

I am not as experienced as Kathy, but I am willing to continue meetings at a basic skill level.

I would appreciate someone willing to take on the Convener role for this SIG – please contact Norman Elliman (Committee) [normane166@gmail.com](mailto:normane166@gmail.com), or Jan Weiner [weijan@westnet.com.au](mailto:weijan@westnet.com.au).

You are welcome to attend one or both of these workshops and this is a great opportunity to get more from your computing experience. If you do decide to attend both sessions you may want to bring along your lunch or consider where you can go to pick something up. (There are not many options for lunch!)

These workshops are intended to help you get the best from your experience with the Windows Operating Systems and, hopefully, have something for both the beginner and the more experienced. Please bring along any queries or problems that you may be having; or any tips, techniques, or interesting apps and sites you may like to share with other members of the workshop.

I look forward to seeing you.

**– Jan Weiner**



# Windows 7 & 8 SIG Workshop here to stay!

*We are excited to announce our Windows 7 & 8 workshop is now on a permanent once a month basis! (See details on sidebar)*

This SIG will not only benefit beginners, but those familiar with computers and with windows software, to learn and share tips on using Windows operating systems 7 & 8 and ultimately enhance your computing knowledge and experience.



**Convener:** Kathy Rouse—  
[adobevideo@melbpc.org.au](mailto:adobevideo@melbpc.org.au)

**Venue:** Melb PC Headquarters, Level 1,  
479 Warrigal Rd,  
Moorabin 3189

**When:** Every third Saturday of the month  
(excluding January)

**Time:** 10am—3pm  
(Windows 7 workshop 10am-12pm) - (Windows 8 workshop 1pm-3pm)

*Discover, Learn, Share*



## INTERNET HELP (iHELP)

**For members needing assistance, iHelp is a group of “Users helping Users.” Their main role is to sort out Internet or general PC problems. Assistance can be obtained in various ways depending on your connectivity and convenience.**

### Phone First Aid

This is a telephone support number for simple and urgent problems: call (03) 9276 4088, Monday to Friday between 10am and 3pm.

Outside these hours, or if iHelpers are not available, just leave a message on that number (including your membership details), and it will be passed onto the iHelp team.

If the problem cannot be resolved within 15 minutes it is generally referred to Internet Help, where an appropriate iHelper will follow up the inquiry.

### Email Help

For those who cannot access our web pages but can send an email, a request for help with membership details can be sent to [help@melbpc.org.au](mailto:help@melbpc.org.au). It is then logged to Internet Help where an appropriate iHelper will follow-up the inquiry.

### Internet Help (iHelp)

The main iHelp system for Melb PC members is accessed from the [Internet Services Page](#) on the Melb PC website under the link titled “Internet Help”, which goes to <http://ihelp.melbpc.org.au/helpdesk/iuser/index.asp>.

After entering your Membership Number and First Name, you are able to “Log a Service Request”, with details of your problem.

When an appropriate iHelper is available, they will contact you at your registered phone number or email address, which should therefore be kept up-to-date at the office.

All efforts will be made to ensure someone replying to your request is familiar with the issue, however if the problem cannot be solved to your satisfaction, you may wish to refer to other Group resources as detailed below.

---

## OTHER WAYS TO GET HELP

### FAQs

On the [Internet Services Page](#) there is a link to Frequently Asked Questions (FAQs) on using the Melb PC Internet Service. In many cases a solution will have already been documented.

### Anywhere, Any-time SIG (Newsgroups)

For those familiar with using newsgroups, we suggest that you subscribe to [melbpc.connectivity](#), [melbpc.computing.misc](#), or [melbpc.general](#).

Alternatively, you can access the messages via an online web-based forum, via the [Internet Services Page](#). See the following page for more details.

### SIG Meetings

Most SIGs hold monthly meetings in locations around Melbourne. These provide the opportunity

for one-on-one discussion with knowledgeable local members. Details of SIGs can be found in *PC Update*, or from the [Internet Services Page](#) from the top link titled “Interest Group Pages.”

### SIG Workshops

Some SIGs hold monthly workshops, in locations around Melbourne. These provide the opportunity for hands-on assistance with your PC from local knowledgeable members.

Details of SIG workshops can be found in *PC Update*, or from the [Internet Services Page](#) from the top link titled “Interest Group Pages.”

Please contact the Convener at least 24 hours before attending so they can research the problem, and bring to the meeting any hardware or software that might be needed.

## Monthly Meeting Q&A

At the Moorabbin Monthly General Meeting, besides interaction with other members, there is always a Q&A session hosted by one of the Group's computer experts. If you have a straightforward question, this is often a good place to get a precise answer with additional feedback from the audience.

## Dial Help

The Dial Help service is described here:

<http://www.melbpc.org.au/help>.

If your problem relates to one of the listed categories, the relevant volunteer may be telephoned for

specific advice. Calls can be made between 9am to 5pm and 6.30pm to 9pm.

Please keep all calls short, particularly during business hours, and don't expect a volunteer to call you back on a mobile phone number.

## Home Visit Assist

This service is only for members who are restricted in their activities or mobility. This generally means those with an Age or Disability Pension.

The contact for Home Visit Assist is the Office Phone: (03) 9276 4000, or by email to:

[office@melbpc.org.au](mailto:office@melbpc.org.au).

## NEWSGROUPS VIA ONLINE WEB-BASED FORUM

Accessing the forum is a two-step process. The first step gains read-only access using your Melb PC credentials. i.e. username and password as for email or Webmail. e.g. fdagg \*\*\*\*\*

The second step, to enable posting of messages, requires a separate forum username and password i.e. you need to join the forum. Currently the only way to do this is to post a message in one of the newsgroups (use melbpc.general) using a news client such as Thunderbird. A forum membership is then automatically generated based on the name and email address used.

e.g. Fred Dagg fdagg@melbpc.org.au

This can be done on a member's behalf by sending an email to [anywhere@melbpc.org.au](mailto:anywhere@melbpc.org.au) detailing the name and email address you wish to use. Please use your real name as we're a friendly bunch, and note that the newsgroups are private and only accessible by fellow Melb PC members. You don't have to use your Melb PC email address.

Once the forum membership has been created you will receive an auto-generated email to confirm you really do want to join. Confirm and then use the forum's "forgotten password" link to generate a new password. This is all handled between the forum software and the user nominated email account so no-one else has access to the password.

Please note that using the forum for posting newsgroup messages is still somewhat experimental, but does work quite well.

## **Melbourne PC User Group 2013 Committee Elections Returning Officer's Report**

The Committee Elections were held on Wednesday November 6, 2013. At the Close of Nominations there was only one candidate for President, Secretary and Treasurer.

<b>President</b>	Harry Lewis
<b>Treasurer</b>	Geoffrey Keenan
<b>Secretary</b>	Ian Rankin

There were two candidates for Vice-President: Don McKenzie and Charles Wright so a ballot was held. There were 398 Postal Votes of which 355 were valid. On election night, 91 voting papers were issued of which 87 valid votes were received by the close of voting. The result of the counting of votes was:- Charles Wright 369 votes and Don McKenzie 73 votes. Therefore Charles Wright was declared elected as Vice-President.

<b>Vice President</b>	Charles Wright
-----------------------	----------------

Don McKenzie also nominated for general committee making a total of five nominations for the eight places available. So there was no requirement for an election.

Therefore I declare the following people elected:

<b>President</b>	Harry Lewis
<b>Vice President</b>	Charles Wright
<b>Treasurer</b>	Geoffrey Keenan
<b>Secretary</b>	Ian Rankin

### **General Committee**

Norman Elliman	Phil Lew
Lance Lloyd	Don McKenzie
Roger Wragg	

The high number of informal postal votes was largely caused by having the Proxy Form and Postal Voting Paper on the same sheet of paper to save postage costs. The procedures for sending the votes in were not followed and many came in unsigned and were therefore invalid. For the next election, I recommend that the two forms be on separate sheets of paper and the postal voting instructions and the voting paper be included on the same sheet of paper.

I would like to thank all the candidates for their participation. It is disappointing to see we did not have enough nominations to fill the committee positions. I hope some members will offer to fill those positions or help on the sub-committees.

I would like to thank Dianne Vogt, and Dave Botherway for their assistance.

**John Swale**  
**Returning Officer**

## Melbourne PC User Group Committee 2013-2014

The overall responsibility for Melb PC business lies with the Committee (except for matters reserved to general meetings). Our rules and Committee decisions have identified specific responsibilities as follows. Members wishing to discuss any of these matters are invited to contact the responsible person from this list, and on any other matter to contact the President or the Secretary.

<b>President</b>	Harry Lewis	<a href="mailto:president@melbpc.org.au">president@melbpc.org.au</a>
<b>Vice-President</b>	Charles Wright	<a href="mailto:vicepresident@melbpc.org.au">vicepresident@melbpc.org.au</a>
<b>Secretary</b>	Ian Rankin	<a href="mailto:secretary@melbpc.org.au">secretary@melbpc.org.au</a>
<b>Treasurer</b>	Geoffrey Keenan	<a href="mailto:treasurer@melbpc.org.au">treasurer@melbpc.org.au</a>
<b>Buildings and Facilities</b>	Roger Wragg	<a href="mailto:rdwragg@fastmail.fm">rdwragg@fastmail.fm</a>
<b>Email upgrade</b>	President	
<b>Internet Management Committee</b>	President	
<b>Librarian</b>	Yahya Abdal-Aziz	<a href="mailto:yahyaAA1@hotmail.com">yahyaAA1@hotmail.com</a>
<b>Monthly meetings</b>		
Finding speakers	President	
Hosting	Stewart Gruneklee	<a href="mailto:stewartg@melbpc.org.au">stewartg@melbpc.org.au</a>
<b>PC Update</b>	Vice-President	
	Lance Lloyd	<a href="mailto:lance.melbpc@fastmail.fm">lance.melbpc@fastmail.fm</a>
<b>SIG Co-ordinator</b>	Norman Elliman	<a href="mailto:normane166@gmail.com">normane166@gmail.com</a>
<b>Website development</b>	President	
<b>Content</b>	Vice-President	
<b>Technical development</b>	Craig Mattson	<a href="mailto:craig@craigmattson.net">craig@craigmattson.net</a>

Note: all the above are members of the Committee 2013-2014 except for Yaha Abdal-Aziz, Craig Mattson and Stewart Gruneklee.

## BREAKING NEWS – Our Melb PC Newsgroups

A lively discussion ensued after a member posted a news item which reports that the Northern Territory police have warned people they could be fined \$150 for texting on their mobile phones – while walking.

*Quirky news items are often posted in the newsgroups.*

In the Market place newsgroup you can find a bargain, or place a “wanted” ad. This month a monitor and DVD sleeves are offered free.

*You can find a bargain and list your unwanted items in our Marketplace newsgroup too.*



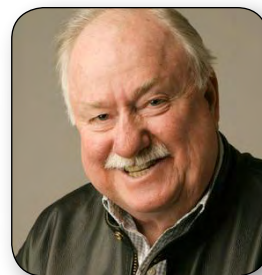




**PRESIDENT**

Harry Lewis

[president@melbpc.org.au](mailto:president@melbpc.org.au)



**VICE-PRESIDENT**

Charles Wright

[vicepresident@melbpc.org.au](mailto:vicepresident@melbpc.org.au)



[committee@melbpc.org.au](mailto:committee@melbpc.org.au)



**TREASURER**

Geoffrey Keenan

[treasurer@melbpc.org.au](mailto:treasurer@melbpc.org.au)



**SECRETARY**

Ian Rankin

[secretary@melbpc.org.au](mailto:secretary@melbpc.org.au)



**MEMBER**

Norman Elliman

[normane166@gmail.com](mailto:normane166@gmail.com)



**MEMBER**

Phil Lew

[phil@melbpc.org.au](mailto:phil@melbpc.org.au)



**MEMBER**

Lance Lloyd

[lance.melbpc@fastmail.fm](mailto:lance.melbpc@fastmail.fm)



**MEMBER**

Don McKenzie

[dimck@solemate.com.au](mailto:dimck@solemate.com.au)



**MEMBER**

Roger Wragg

[rdwragg@fastmail.fm](mailto:rdwragg@fastmail.fm)

## Committee Profile: Norman Elliman

I have been a member since 2009. Because Melb PC needs, now more than ever, support from all its members, I accepted nomination to stand for a seat on the committee.

I have had over 15 year's committee experience in areas of conflict within various aspects of specialised areas of day-to-day running of business. I am hoping that my contribution to the future of Melb PC will contribute a more transparent view of how the organisation is run and to be able to encourage other members to participate in the continuation of this established [since 1984] PC group.

It is unique in its concept and can't be allowed to fade away into oblivion. It still has a place in the future of this magnificent concept of world communication. And its members need to face up to the facts that unless they fully support and engage in the running and welfare of this basically volunteer-run organisation, it could become yesterday's story. I don't want that and you members shouldn't want that either.

Your commitment and involvement, and contribution are always needed. I am hoping to make my contribution. What are you going to do?

**Norman Elliman**

[normane166@gmail.com](mailto:normane166@gmail.com)



ABN 43 196 519 351  
(Victorian Association Registration No. A0003293V)  
Unit 26, 479 Warrigal Road, Moorabbin VIC 3189  
Telephone: (03) 9276 4000  
Email: [office@melbpc.org.au](mailto:office@melbpc.org.au)  
Web: [www.melbpc.org.au](http://www.melbpc.org.au)

### Subscription for Monthly Disc

Name		Membership Number	
Address		Current Contact Email Address	
Suburb	Post Code	Phone	

For	Feb	Mar	Apr	May	Jun	Jul	Aug	Sep	Oct	Nov	Dec	Total	\$ _____
Month												Amount	

Price: \$3.00 per disc if you collect it from the office or purchase at the monthly meeting.

Add an Extra \$1.00 postage and handling if we mail your order.

**Price for a yearly subscription is \$44.00 inc mailing to your home address.**

#### Payment Details

Name on Card	Expiry Date on card	Signature	Date
			/ /

# MELB PC APPLICATION FORMS



ABN 43 196 519 351  
(Victorian Association Registration No. A0003293V)  
Unit 26, 479 Warrigal Road, Moorabbin VIC 3189  
Telephone: (03) 9276 4000  
Email: office@melbpc.org.au  
Web: www.melbpc.org.au

## PCUPDATE Subscription for print version

Name		Membership Number										
Address		Current Contact Email Address										
Suburb	Post Code	Phone										
For Month	Feb	Mar	Apr	May	Jun	Jul	Aug	Sep	Oct	Nov	Dec	Total Amount \$

Price: \$4.00 per magazine if you collect it from the office or purchase at the monthly meeting.

Add an Extra \$1.00 postage and handling if we mail your order.

**Price for a yearly subscription is \$55.00 inc mailing to your home address.**

**\*\*Please note current members receive a \$10 discount on the full year subscription.\*\***

### Payment Details

Name on Card	Expiry Date on card	Signature	Date / /
<input type="text"/>	<input type="text"/>	<input type="text"/>	<input type="text"/>



ABN 43 196 519 351  
(Victorian Association Registration No. A0003293V)  
Unit 26, 479 Warrigal Road, Moorabbin VIC 3189  
Telephone: (03) 9276 4000  
Email: office@melbpc.org.au  
Web: www.melbpc.org.au

## EMAIL ACCOUNT APPLICATION

Membership No.	First Name	Last Name	DOB
Address		Current Email Address	
Suburb	Post Code	Phone	Mobile Number

### Email User Name Selection

List the user ("login") names you would like in order of preference, up to eight (8) lowercase letters, numbers may be used in place of letters. Write very clearly, to avoid confusing certain letters and numbers. User names are expressed in lower case letters only e.g. "John J. Jones" might request user names such as "john", "johnj", "jjones", "jjones2", etc. Any user name that is already allocated or deemed unsuitable in the opinion of the system administrators will not be allocated.

Choice 1.

Choice 2.

Choice 3.

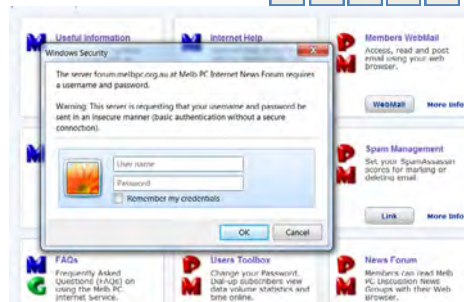
Choice 4.

<input type="text"/>	<input type="text"/>	<input type="text"/>	<input type="text"/>	<input type="text"/>	<input type="text"/>	<input type="text"/>	<input type="text"/>
<input type="text"/>	<input type="text"/>	<input type="text"/>	<input type="text"/>	<input type="text"/>	<input type="text"/>	<input type="text"/>	<input type="text"/>
<input type="text"/>	<input type="text"/>	<input type="text"/>	<input type="text"/>	<input type="text"/>	<input type="text"/>	<input type="text"/>	<input type="text"/>
<input type="text"/>	<input type="text"/>	<input type="text"/>	<input type="text"/>	<input type="text"/>	<input type="text"/>	<input type="text"/>	<input type="text"/>

For email account hosted at melbpc.org.au webmail which can also be accessed from any mail reading application such as Gmail, Outlook, Thunderbird etc.

Access to the Melb PC newsgroups and a discussion forum where you will find a friendly, helpful bunch of people. Discussions include computing and almost every other topic under the sun!

<http://melbpc.org.au/isp/>



# Everything iPad/iPhone

A joint venture between MelbPC and AUSOM with an emphasis on the Apple iPad and iPhone, and helping people understand the iOS environment.

Convenor: Dick Johnson 9857 7362  
E-mail to: [applesig@melbpc.org.au](mailto:applesig@melbpc.org.au)  
or [everything-ipad@ausom.net.au](mailto:everything-ipad@ausom.net.au)

**Next Meeting:  
December 18**

**2:00 pm Have iPad, will Travel** *Presented by Dick Johnson*

This ultra portable device is rapidly transforming the way we travel around the globe: from organising transportation to writing notes, storing camera pix to surfing the net, finding your way around a virtual map to keeping up with news at home - all the while taking care of finances right from your iPad as you curl up to read your favourite eBooks!



This will be a full two hour session with a short break around 3pm.

**3<sup>rd</sup> Wednesdays, 2:00 pm - 4:00 pm (except January)**

**Moorabbin Interest Group Room - L1, 479 Warrigal Road, Moorabbin**

## BREAKING NEWS – Our Melb PC Newsgroups

Members often give us a "heads-up" for bargains going around. Recently there was an offer for a Kaspersky Pure Security Suite (three licences) for \$30.

*You can get these tips too if you read the newsgroups.*

A lively discussion ensued after a member posted a news item in which the Northern Territory police have warned people they could be fined \$150 for texting on their mobile phones - while walking.

*Quirky news items are often posted in the newsgroups.*

We have 14 newsgroups, each with a different emphasis. You can read some of the newsgroup conversations by logging into <http://forum.melbpc.org.au/newsforum> with your Melb PC username and password.

To read all of the newsgroups, and when you are ready to start a topic, join a conversation or ask for help, you can setup a newsreader utility on your computer. We will help you with this. Here's the place to start <http://member.melbpc.org.au/~anywhere>





# MELB PC APPLICATION FORMS



## MELBOURNE PC USER GROUP INC.

ABN 43 196 519 351  
(Victorian Association Registration No. A0003293V)  
Unit 26, 479 Warrigal Road, Moorabbin Vic 3189 Australia  
Telephone: (03) 9276 4000  
Email: office@melbpc.org.au Web: www.melbpc.org.au

"Members helping Members"

## APPLICATION FOR MOBILE 3G/4G BROADBAND

Name		Membership Number
Address		Current Contact Email Address
Suburb	Post Code	Phone

\* SEE TERMS AND CONDITIONS OVERLEAF. YOU ARE REQUIRED TO SIGN THE TERMS AND CONDITIONS INDICATING YOU HAVE READ AND UNDERSTOOD THEM.

\* Complete all fields on this Mobile Broadband Application. This Information is required for the system database. Incomplete applications will be returned.

### 3G MOBILE DATA PLANS

2GB	4GB	6GB	8GB	10GB	15GB
<b>\$20</b> PER MONTH First month in advance (\$40), thereafter \$20 on a direct debit on credit card for 12 months. Total spend \$240.00 DEVICE INCLUDED EXCESS DATA USAGE COSTS \$7.50 PER 1GB OR PART THEREOF.	<b>\$30</b> PER MONTH First month in advance (\$60), thereafter \$30 on a direct debit on credit card for 12 months. Total spend \$360.00 DEVICE INCLUDED EXCESS DATA USAGE COSTS \$7.50 PER 1GB OR PART THEREOF.	<b>\$35</b> PER MONTH First month in advance (\$70), thereafter \$35 on a direct debit on credit card for 12 months. Total spend \$420.00 DEVICE INCLUDED EXCESS DATA USAGE COSTS \$7.50 PER 1GB OR PART THEREOF.	<b>\$40</b> PER MONTH First month in advance (\$80), thereafter \$40 on a direct debit on credit card for 12 months. Total spend \$480.00 DEVICE INCLUDED EXCESS DATA USAGE COSTS \$7.50 PER 1GB OR PART THEREOF.	<b>\$45</b> PER MONTH First month in advance (\$90), thereafter \$45 on a direct debit on credit card for 12 months. Total spend \$540.00 DEVICE INCLUDED EXCESS DATA USAGE COSTS \$7.50 PER 1GB OR PART THEREOF.	<b>\$55</b> PER MONTH First month in advance (\$110), thereafter \$55 on a direct debit on credit card for 12 months. Total spend \$660.00 DEVICE INCLUDED EXCESS DATA USAGE COSTS \$7.50 PER 1GB OR PART THEREOF.

☐ **2GB \$210 upfront for 12 month contract = \$17.50 PER MONTH**  
EXCESS DATA USAGE COSTS \$7.50 PER 1GB OR PART THEREOF. Total spend is \$210.00.

### 4G MOBILE DATA PLANS (3 to 4 times faster downloads than 3G)

3GB = \$30 PER MONTH	6GB = \$40 PER MONTH	9GB = \$50 PER MONTH	12GB = \$60 PER MONTH
First month in advance (\$60), thereafter \$30 on a direct debit on credit card for 12 months. Total spend \$360.00 EXCESS DATA USAGE COSTS \$7.50 PER 1GB OR PART THEREOF.	First month in advance (\$80), thereafter \$40 on a direct debit on credit card for 12 months. Total spend \$480.00 EXCESS DATA USAGE COSTS \$7.50 PER 1GB OR PART THEREOF.	First month in advance (\$100), thereafter \$50 on a direct debit on credit card for 12 months. Total spend \$600.00 EXCESS DATA USAGE COSTS \$7.50 PER 1GB OR PART THEREOF.	First month in advance (\$120), thereafter \$60 on a direct debit on credit card for 12 months. Total spend \$720.00 EXCESS DATA USAGE COSTS \$7.50 PER 1GB OR PART THEREOF.

**4G mobile devices:** ☐ USB modem \$120.00 ☐ Wireless Modem \$170.00

### BYO PHONE VOICE and DATA on a 4G PLAN

**\$35 MONTHLY SIM only plan on 4G network,  
(\$420.00 total spend for 12 months, pay monthly)**

- Standard calls to friends and family within Australia^ ● \$500 of included value ● 1GB of data
- Just bring your own phone and get connected on the Optus network.

#### Pricing Information:

The cost of a two minute standard national voice call is \$2.36. The cost of sending a standard national TXT is 30c. Additional data in Australia is 10c/MB (Charge per kB).

^Includes standard national & international voice & video calls & TXT & PXT; voicemail; calls to 1223, 1225, 13, 15 & 18 numbers; & re-routed calls.

#### PAYMENT DETAILS

\*Authorise a direct debit against your credit card for the requisite amount as required. Cheques only accepted for the 12 month contract amount. And return it to : Melbourne PC User Group. Suite 26, Level 1, 479 Warrigal Road Moorabbin VIC 3189

Name on Card	Signature*	Date / /	Amount
			Expiry Date

#### OFFICE USE ONLY

S/N	SIM	WiFi Key
-----	-----	----------

## \*Melb PC Dialup and Mobile Broadband Internet Terms and Conditions

### A. Definitions

"Melb PC" means Melbourne PC User Group incorporated or its assignee:

"Member" means a financial member of Melbourne PC User Group and includes:

a) "Full Member" A person accepted into the Group after payment of the current full membership fee, or the related Student or Pensioner concession fee.

b) "Family Member" A domiciled spouse, partner, child or relative of a full member accepted to participate in activities of the Group and use that Member's Internet account after payment of the Family Membership fee; the "subscriber" means the Melb PC full member who has accepted the Melb PC Internet Agreement and paid fees for the subscription period and includes both Full and Email account subscribers. (see Level of Description); "subscription periods" means the period in advance for which the subscriber has paid in full being one of the periods of subscription offered by Melb PC from time to time.

### B. Subscription type & Details.

Subscription Type	Annual Fee or Monthly Fee	email & Newsgroup Storage or Mail Quota (Limit)	Browsing	Time Limit	Home Page Storage	Download Limit	When Limit Reached
3G Mobile Broadband 2GB 3G Mobile Broadband 4GB 3G Mobile Broadband 6GB 3G Mobile Broadband 8GB 3G Mobile Broadband 10GB 3G Mobile Broadband 15GB	\$210pa or \$20 pcm \$30 pcm \$35 pcm \$40 pcm \$45 pcm \$55 pcm		Yes			2GB pcm 4GB pcm 6GB pcm 8GB pcm 10GB pcm 15GB pcm	Excess data usage on all plans costs \$7.50 per 1GB or part thereof
4G Mobile Broadband 3GB 4G Mobile Broadband 6GB 4G Mobile Broadband 9GB 4G Mobile Broadband 12GB	\$30 pcm \$40 pcm \$50 pcm \$60 pcm		Yes			3GB pcm 6GB pcm 9GB pcm 12GB pcm	Excess data usage on all plans costs \$7.50 per 1GB or part thereof
4G Voice and Data Plan	\$35 pcm		Yes			1GB pcm	Excess data usage on all plans costs \$7.50 per 1GB or part thereof
Email account	\$0	10 MB	nil		Nil	nil	Rejected
ADSL Coming Soon	NA						

The above charges and details are subject to change from time to time. Limits and Time Quota: daily (non-cumulative) plus bonus time in non-peak periods.

Email Account Subscriber (available to all Melb PC Members without charge)

### C. Description of Service(s)

General:

Melbourne PC User Group Inc. A0003293V (Melb PC) Internet Service network (the Network) is a service owned and operated by Melb PC for its members. It is a subscriber-funded service administered by the Internet Management Subcommittee (the subcommittee).

Function of the Melb PC Network: The primary function of the Network is to support the transfer of information to and from Melb PC members and the International community, subject to the terms of this agreement.

Access Software: The subscriber will need to acquire suitable mail, news and Web software from our shareware library or other resources. However, Melb PC makes available a configuration kit that automates this process for those who require it.

Accounts: Accounts are issued only to individuals, not company names; Melb PC may reject an application without stating a reason.

Support: Volunteers offer their help in local newsgroups and via an Internet Help team with interaction through Web Boards, e-mail and direct telephone support.

Duration: The subscription to the Network is for one year from the date of acceptance. It automatically terminates upon expiry of membership of MelbPC if that occurs earlier.

Acknowledgment: Successful applicants will include individuals whose forms are correctly filled out and whose funds have been transferred to the Melb PC Bank account.

Net Etiquette: Melb PC endorses adherence to ("Net etiquette" or "Netiquette") as deemed by the subcommittee from time to time and to prevailing International standards widely accepted as suitable behavior for using the Internet.

### D. Terms of Agreement

- The subscriber asks Melb PC to provide a level of Internet access and Melb PC agrees to do so.
- This agreement starts when an authorized officer of Melb PC has executed it and Melb PC has received a cleared payment for the subscription period.
- If the subscriber renews this agreement for a further subscription period, this agreement applies to the renewed subscription period unless the parties agree otherwise in writing.
- The subscriber acknowledges that:
  - Continuity and speed of the Internet access depends on a wide range of factors many of which are beyond the control of Melb PC.
  - Melb PC has no control over the accuracy of appropriateness of any information on the internet.
  - Melb PC is not responsible for any material available on the Internet.
  - The subscriber's Internet access may be interrupted by equipment failure, the need for routine maintenance peak demand and so on.
  - Melb PC cannot guarantee that the subscriber will be able to secure access at any given time or that fluctuations in demand by other subscribers will not prevent the subscriber from using the full amount of the maximum daily time allowance on any given day.
  - Melb PC cannot guarantee that subscriber's home pages will always be available.
  - Dial up and Mobile Broadband Internet Subscribers are responsible for writing and uploading their own home pages and keeping backup copies of same. Melb PC does not back up these home pages. Subscribers will need to reload their own home pages in the event that the Melb PC facilities suffer any data loss.
  - The right to publish and communicate using home pages is granted to full Internet subscribers in the spirit of user group activities of sharing and furthering the computing experience. The quality of the Melb PC Internet service will be protected by Melb PC reserving its right to suspend the access to any publications of a subscriber who generates a disproportionate amount of Internet traffic. Subject to matters of the kind referred to in the previous clause and to the subscriber's access limits, Melb PC will use its best endeavors to keep Internet access available continuously and to allow the subscriber to have access for the current daily time allowance as set from time to time.
- The subscriber will indemnify Melb PC against any liability, claim, action, suit, demand, loss, cost or expense arising out of or in any way connected with this agreement or Internet access, including without limitation any negligence by Melb PC, its servants or agents.
- The subscriber will pay fees according to Melb PC's standard pricing list from time to time, and a copy of the list certified by an officer of Melb PC is conclusive evidence of the prices applicable at any time.
- Any notice given about any matter concerning this agreement may be given by clicking an accept button following the display of the agreement on a web page, by fax, e-mail or post at the last fax number email or postal address notified to the sender and is deemed to have been received at the time when it would have arrived in the ordinary course of the relevant type of transmission.
- Melb PC may change any term of this Agreement or make additional rules at any time by means of notification delivered in accordance with clause 9. Subscriber may refuse to accept any such change and terminate or her Internet access and receive a pro-rata refund for any paid subscription if a request to this effect is received within 14 days from the deemed receipt date of a notice of changes. Should a subscriber continue to keep using the service past the date of the notice deemed received as described in clause 9, the subscriber shall be deemed to accept the changes. A copy of the rules certified by an officer of Melb PC is conclusive evidence of the rules applicable at any time. The rules from time to time will apply as if they were set out in full as terms of this agreement.
- The subscriber must not deliberately or recklessly do anything that damages Melb PC's equipment, software, setup or services.
- The subscriber must not use Internet access to annoy, harass or harm other Internet users including sending of viruses either wittingly or unwittingly and the sending of spam or unsolicited bulk email.
- The subscriber must not use Internet access for any unlawful purpose or in any unlawful manner.
- Melb PC does not review any publications or communication and does not verify, endorse, or otherwise take responsibility for the content of same.
- Subscribers are legally responsible for their own publications and communications.
- The subscriber will keep safe and confidential any access numbers; codes or passwords allotted to them by Melb PC and notify Melb PC without delay of any compromise of that information.
- Melb PC may suspend or terminate the subscribers Internet access immediately if the subscriber breaches this agreement wittingly or unwittingly or fails to promptly pay any money owed to Melb PC or ceases to be a member of Melb PC.
- Melb PC may delete without notice any material found on its storage disks without giving any reason for doing so.
- Melb PC may make and keep any record it requires for the purpose of this agreement or the rules or for the operation of its services or as required by the law or its officers.
- The subscriber must not transfer, sell or share internet access rights, or allow the account to be used by any other person, other than those Melb PC Family Members who are listed on this application and have paid the relevant charges.
- The user's last name must be displayed in all e-mail and news messages. The user's first name or initials may be displayed as desired.
- Commercial traffic, in the form of private messages and advertisements in newsgroups designated for that purpose, is permitted within the bounds of Net etiquette.
- The 'Organisation' field in private email or public newsgroup article headers must always be Melbourne PC User Group Australia, the name of the service provider. Any other organisation or business name is permitted only in the four-line (maximum) "signature" text that is optionally inserted at the end of the message or article.
- The "From" field used in email and news messages may be the Melb PC assigned email address. e.g. jones@melbpc.org.au or a "Spam-trap" address, e.g. jones@notspam.org.au or, subject to Clause 22 an external address. e.g. jones@hotmail.com.
- Melb PC may assign its rights and obligations to full Internet Subscribers under this agreement to an Internet access provider that is of equal standard to Melb PC and after notice of assignment is given to the subscriber, this agreement shall have operation as if it had been entered into between the assignee and the subscriber and Melb PC's rights (except for its right to recover any money owed to it immediately before the assignment) and obligations under this agreement shall be at an end. Services to Associate internet Subscribers shall be limited to the period Melb PC is able to provide them from its own resources.
- The parties submit to the law of Victoria, Australia in relation to any the interpretation of this agreement, or any dispute arising out of it.
- To the extent permitted by law and except as expressly provided to the contrary in this Agreement, all warranties whether express, implied, statutory or otherwise, relating in any way to the subject matter of this Agreement or to this Agreement generally, are excluded Where legislation implies in this Agreement any condition, or warranty and that legislation avoids or prohibits provisions in a contract excluding or modifying the application of or the exercise of or facility under such term, such term shall be deemed to be included in this Agreement. However, the liability of Melb PC for any breach of such term shall be limited at the option of Melb PC, to any one or more of the following if the breach related to goods: the replacement of the goods or the supply of equivalent goods; the repair of such goods; the payment of the cost of replacing the goods or of acquiring equivalent goods, or the payment of the cost of having the goods repaired; and if the breach relates to services the supplying of the services again; or the payment of the cost of having the services supplied again. To the extent permitted by law and except as expressly provided to the contrary in this Agreement Melb PC shall not be under any liability (contractual, tortious or otherwise) to subscriber in respect of any loss or damage (save for only personal injury and death) howsoever caused. which may be suffered or injured or which may arise directly or indirectly in respect to the supply of goods or services pursuant to this Agreement or the act, failure or omission of Melb PC.
- Accounts may be suspended without notice to stop transmission of network packets that threaten or have the potential to threaten the security or normal operation of any computer or device on the local or wider network. Such packets are categorised solely by the Internet Management Subcommittee. Users of accounts suspended without notice will be advised by telephone or writing within two working days of the nature of the packets originating from their account. Lifting of the suspension will require the registered account holder to provide evidence of confirmed action being taken to prevent further the transmission of such threatening or potentially threatening packets.
- The Description of Service "Internet Access Agreement" and the services as described on this application form constitute the entire agreement between the partner and neither of them relies on any term, condition, warranty, collateral contract, representation or promise not set out in those parts of these forms.
- Authorised by Melb PC Committee, 1<sup>st</sup> September 2013

I have read the terms and conditions

signed.....dated.....



## Membership Drive

### Introduce a new member\*

to Melbourne PC User Group

**and receive credit towards your membership fees.**

Dear Member, your friend will receive all the benefits you already enjoy—the digital magazine [PC Update], the help lines, the Special Interest Groups (SIGs), the monthly meetings, workshops, discounted products, email addresses and access to mobile broadband—and you will be helping your club to grow.

Each new member\* you enrol gives you **two months' credit** towards your membership renewal (approx. \$12.00 value against a full membership). The more new members you enrol, the more credit towards your next membership renewal. No limits apply.

You know how much you enjoy being part of Melbourne PC User Group. So why not bring along a friend to enjoy it too? Prospective new members are always welcome at the monthly or SIG meetings.

And every time you enrol a new member, you get 2 months' credit registered against your next membership dues.

(\*This does not include family members and anyone re-joining within 12 months of leaving Melb PC)

### INVITATION

#### Interested in Computers and Technology?

You are invited to attend the Monthly Meeting of  
the Melbourne PC User Group on

**The first Wednesday of the Month**

**@ Unit 26, 479 Warrigal Road, Moorabbin (Melways 78 C8)**

#### PROGRAM

- **Q&A with Barry Martin**—your computer questions answered
- **President's Report**—Charles Wright's update on club news
- **Presentation**—one or two relevant presentations by guest speakers on technology news. Past presentations have covered Intel processors, GPS mapping with TomTom, 3D printing, Microsoft, Samsung, Gigabyte motherboards and how smart meters work.

# MELB PC APPLICATION FORMS



## MELBOURNE PC USER GROUP INC.

office@melbpc.org.au www.melbpc.org.au  
Unit 26, 479 Warrigal Road, Moorabbin, Victoria 3189  
Phone: (03) 9276 4000

"Members helping Members"

### MEMBERSHIP APPLICATION FORM

Title	First Name	Last Name
Address		
Suburb		Post Code
Phone		Mobile Number
DOB	Preferred Email Address	

### Annual Membership Fees

Individuals	\$65 each .....
Students/Pensioners*	\$50 each .....
Additional Family Members (excludes relatives or friends)	\$12 each .....
<b>TOTAL</b> .....	

### Additional Family Members

Name ..... Signature .....

Name ..... Signature .....

\* Students must attach a photocopy of their student card or letter from their educational institution confirming full student status.

\* Pensioners must attach a photocopy showing both sides of their Centrelink Pension Concession Card. Change of family member(s) must be identified in writing to the club secretary.

I hereby apply for membership of Melbourne PC Users Group Inc. (A000329V) and agree to abide by its rules while I remain a member.

Signature ..... Date / /

### Payment Details

Name on Card	Expiry Date
<input type="text"/> <input type="text"/> <input type="text"/> <input type="text"/> <input type="text"/> <input type="text"/> <input type="text"/> <input type="text"/> <input type="text"/> <input type="text"/> <input type="text"/> <input type="text"/> <input type="text"/> <input type="text"/> <input type="text"/>	<input type="text"/> <input type="text"/> <input type="text"/> <input type="text"/> <input type="text"/> <input type="text"/> <input type="text"/> <input type="text"/> <input type="text"/> <input type="text"/> <input type="text"/> <input type="text"/> <input type="text"/> <input type="text"/> <input type="text"/>
Signature	Date / /

### Email User Name Selection

List the user ("login") names you would like in order of preference. Write very clearly, to avoid our confusing certain letters. User names are expressed in lower case letters and must represent you real name in some recognisable way e.g. "John J. Jones" might request user names such as "john", "johnj", "jjones", etc. Any user name that is already allocated or deemed unsuitable in the opinion of the system administrators will not be allocated.

Choice 1. \_\_\_\_\_

Choice 2. \_\_\_\_\_

Choice 3. \_\_\_\_\_

Choice 4. \_\_\_\_\_



**Melbourne PC User Group** (Melb PC) started in 1984 and today we have over 5,500 members – making us the biggest Personal Computer group in Australia, perhaps the world. Our motto is *Members helping Members* – we all support each other. Melbourne PC is a not-for-profit incorporated association and we run the group on a volunteer basis.

#### MEMBER FACILITIES

Members can enjoy our modern, well-equipped facility at Moorabbin – located South East of the CBD. Moorabbin Club Rooms have free Wi-Fi, the club hosts Gaming Groups, Computer Workshops – Special Interest Groups (SIG's) at Moorabbin and in other parts of Melbourne and Victoria, free online or dial help to all our members we also publish a magazine once a month, PC Update. Visit the Club library, which boasts hundreds of the latest computer books and magazines.

#### INTERNET SERVICES

ADSL from \$29.95 via iiNet (Westnet)

Business Mobile Broadband via Optus \$17.50 per month shaped 2GB (suitable for both iPad's & Tablets) Payable annually

#### VOLUNTEER HELP

Volunteers give their time freely to help others. Dial Help is a list of members who can help with over 100 topics.

#### MAGAZINE

PC Update, our award-winning colour magazine available 11 times a year. Articles by fellow members and invited experts increase your knowledge about computers and converging technologies. Become a contributor!

#### COMMUNICATIONS

An email account hosted at melbpc.org.au webmail which can also be accessed from any mail reading application such as gmail, outlook, thunderbird etc.

Access to the Melb PC newsgroups and a discussion forum where you will find a friendly, helpful bunch of people. Discussions include computing and almost every other topic under the sun!

#### HIRE OF FACILITIES

We have a modern, well equipped training room for 12-20 learners and a conference room that doubles as a LAN gaming facility seating 170 conference style, plus a smaller meeting room for 12. For bookings and pricing contact the office on (03) 9276 4000.

#### MONTHLY MEETINGS

On the first Wednesday of the month (Feb to Dec) our members get together for an entertaining evening where experts present new programs, you can discuss your computer problems – and win big prizes in the raffle.. Visitors welcome.

#### MEMBERS

Our members come from both sexes and all age groups, occupations and computer skill levels. Our premises are wheel-chair friendly.





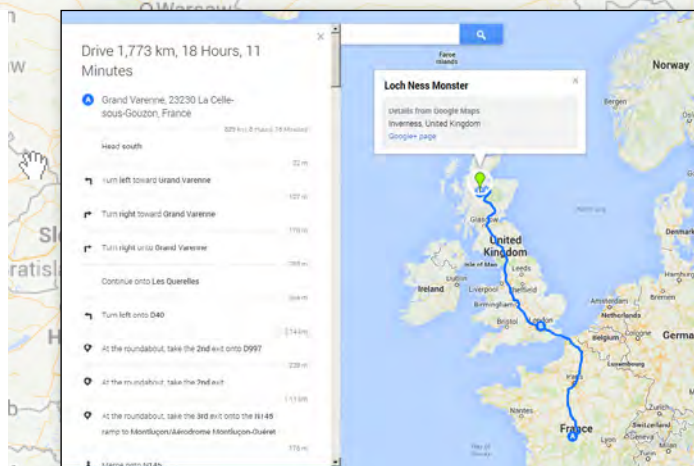
# Melbourne PC User Group Monthly Meeting

Wednesday, 4 December at 7pm

Final meeting for 2013

## Google Mapping

Melbourne PC User Group member DAVE BOTHERWAY will take us on a tour of Europe and the UK using Google Maps and 11 other PC tools, covering the planning and en-route stages.



### MELBOURNE PC USER GROUP INC.

Melb PC Headquarters

Suite 26 Level 1

479 Warrigal Road Moorabbin

(Corner Cochrane Rd)

Melway: 78 D8

*In the evening there is lift access to the 1st floor from the carpark.*

### Public transport options

Public transport users can take Smart Bus 903 from several train stations.

The closest are:

- Mentone station on the Frankston Line (5 minutes away).
- Oakleigh Station on the Pakenham/Cranbourne line (10 minutes away).

**Tickets:**  
1 = \$2  
3 = \$5

## DECEMBER 2013 RAFFLE!



### ASUS N600 Dual-band Wireless Router

- ♦ WIFI certified
- ♦ High Bitrate Transfers and Lag-free streaming
- ♦ Optimized and reliable Wireless coverage
- ♦ High speed multi-functional USB ports

### AVLABS USB HD Digital Radio & TV Tuner

- ♦ Watch free-to-air digital TV/ listen to radio on your PC or notebook
- ♦ Record live Digital TV
- ♦ Compatible with Windows XP, Windows Media Centre, Vista & Windows 7
- ♦ Supports HDTV



### Pendopad 7"

- ♦ 7" Capacitive Multi Touch Screen
- ♦ 4.2 Android OS Jelly Bean
- ♦ 4GB Internal Storage
- ♦ 11mm Ultra slim profile
- ♦ Built in front facing camera

### Seagate Backup plus - Portable drive

- ♦ 1TB/TO
- ♦ USB 3.0
- ♦ Compatible with PC and Mac
- ♦ Upgradeable interface
- ♦ Plug-and-play
- ♦ Provides easy Back-up solution



### Jenkins Bluetooth Speaker

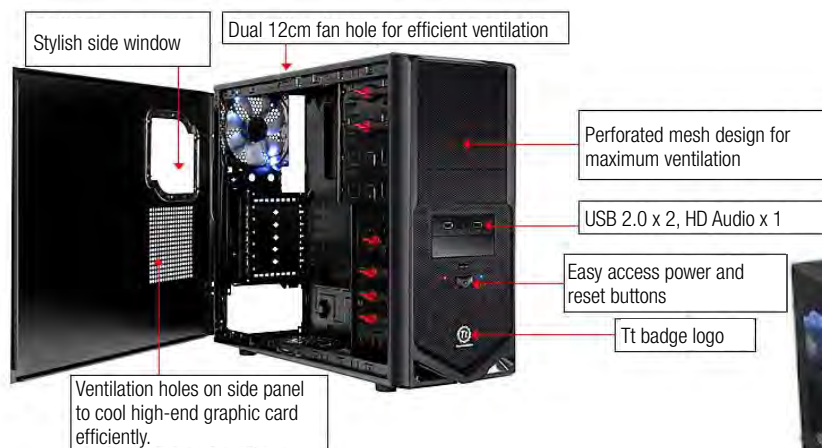
- ♦ Use with smartphones, tablets and Bluetooth enabled desktop or laptop
- ♦ Range = 10m
- ♦ Charging time 4-5 hours
- ♦ Playback time 4 hours



**FOR SALE**

# **FOR SALE**

## **Win 7, Intel i5 3.4GHz, 8GB RAM, 2TB SATA3 Drive**



## **Specifications**

- ThermalTake V4 Midtower case, 500W Power Supply.
- Intel Core i5-4670 CPU (quad core 3.4GHz) LGA1150.
- Gigabyte Z87X-UD3H LGA1150 ATX M/B.
- Kingston 8GB KVR DDR3-1333 RAM (2\*4GB DIMMs).
- Western Digital Green 2TB SATA3 Disk Drive.
- LG SATA2 DVD-RW Drive, Cyberlink software.
- Microsoft Windows 7 Professional 64-bit.

**TWO YEAR WARRANTY INCLUDED!**  
(Melbourne PC User Group)

**\$990!**

Please contact the office staff if you are interested in purchasing this machine

9276 4000.

**STOP PRESS: ONLY ONE LEFT!**



## What's On In December 2013

Js13

Sunday	Monday	Tuesday	Wednesday	Thursday	Friday	Saturday
<b>1</b>	<b>2</b> <b>Nth Subs Linux</b> (7.30pm - 9.30pm)  Melb PC Committee	<b>3</b> <b>North East Genealogy</b> (10am - 12.45pm)	<b>4</b> <b>Monthly Meeting</b>  Melb PC H.Q. Moorabbin 7pm sharp	<b>5</b> <b>AdobeVideo</b> (1.30pm - 4pm)  <b>Ballarat</b> (7.30pm - 9.45pm)  <b>Sunbury Daytime</b> (New Users 9.30am)	<b>6</b> <b>Essendon</b> Christmas Function  <b>Multimedia (MHE)</b> (Wadham House 10am)	<b>7</b>
<b>8</b> <b>Beginners East</b> (10am - 12.30pm)  <b>Genealogy</b> (1pm - 3.30pm)  <b>Mt Waverley East Workshop</b> (10am - 2pm)	<b>9</b> <b>Access</b> (6.30pm - 8.30pm)  <b>Wyndham</b> (General 7.30pm - 9.30pm)	<b>10</b> <b>WASINT</b> (10.30am - 12.30pm)  <b>Everything Apple</b> (2pm - 4pm)  <b>Linux Workshop</b> (4pm - 7pm)  <b>Linux</b> (7pm - 9.30pm)	<b>11</b> <b>Video Production</b> (Sony Vegas 10am)  <b>Communications</b> (7pm - 9.30pm)  <b>Microcontroller</b> (7pm - 9.30pm)  <b>East</b> (7.30pm - 10pm)	<b>12</b> <b>E-Book</b> (7pm - 9.30pm)  <b>NeDay GIG</b> (Includes Photography - Digital Imaging Ivanhoe 10am - 12noon)  <b>Sunbury Daytime</b> (New Users 9.30am)	<b>13</b> <b>Casey PC</b> (Narre Warren Library 12.30pm - 3pm)  <b>Essendon</b> (Open Forum 9.30am)  <b>Hardware</b> (Wadham House 10am)	<b>14</b> <b>Making Money On The Internet</b> (10am - 12noon)  <b>Microcontroller Workshop</b> (12noon - 4pm)
<b>15</b> <b>MACE</b> (10am - 2pm)  <b>Macedon Ranges</b> (Gisborne 2pm - 4pm)	<b>16</b> <b>Graphics &amp; Music</b> Christmas Party and Open Day 6pm  <b>Peninsula</b> (Meeting 9.30am Graphics W'shop 12.30pm Genealogy 2.30pm)	<b>17</b> <b>Wyndham</b> (Multimedia 7.30pm)	<b>18</b> <b>Everything iPad / iPhone</b> (2pm - 4pm)  <b>North East Android</b> (Ivanhoe 10am - 12noon)  Melb PC Marketing (sub-committee 7.30pm)	<b>19</b> <b>Music</b> (7.30pm - 9.30pm)  <b>Bayside</b> Christmas BBQ  <b>Sunbury Daytime</b> (General Meeting 9.30am)	<b>20</b> <b>Essendon</b> (Check website for meeting details. 9.30am)  <b>Photoshop</b> (Digital Images Wadham House 10am)	<b>21</b> <b>Windows 7 &amp; 8</b> (Windows 7. 10am - 12noon Windows 8. 1pm - 3pm)
<b>22</b> <b>Website Design</b> (2pm - 4pm)	<b>23</b> <b>Video Inner East</b> (Balwyn 7pm - 9.30pm)	<b>24</b> <b>Programming</b> (6.30pm - 9pm)  <b>North East</b> (Evening 7.30pm - 9.30pm)  <b>Yarra Ranges</b> (Meeting 9.15am Workshop 11.30am)	<b>25</b> <b>Video Production</b> (Pinnacle 9.30am)  <b>Essendon</b> (7pm - 9pm)  Public Holiday Christmas Day	<b>26</b> <b>Sunbury Daytime</b> (Maintenance 9.30am. Meeting also held on a 5th Thursday)  Public Holiday Boxing Day	<b>27</b> <b>Casey Workshop</b> (Narre Warren Library 12.30pm - 3pm)  <b>Essendon</b> (Check website for Meeting Details 9.30am)  <b>Raspberry Pi</b> (Wadham House 10am)	<b>28</b> <b>Microcontroller Workshop</b> (12noon - 4pm)
Melb PC office closed on Friday 20th December 2013, will re-open on Monday 6th January 2014.						
<b>29</b>	<b>30</b>	<b>31</b>  <b>Have A Question Post it on a Newsgroup</b> <a href="http://groups.melbpc.org.au/~anywhere/">http://groups.melbpc.org.au/~anywhere/</a>	<b>Colour Codes</b> <b>Black:</b> SIG meetings at Melb PC H.Q. Moorabbin. <b>Blue:</b> SIG meetings held at other locations. <b>Dotted Box:</b> No SIG meeting held this month.			
Melb PC Office Closed			For information on "Special Interest Group" activities and meeting times see the group details in PC Update or go to <a href="http://groups.melbpc.org.au">http://groups.melbpc.org.au</a> .			



## is1

[RETURN TO CONTENTS](#)