

Official Magazine of the MELBOURNE PC USER GROUP INC.

PC UPDATE



Plus:
website basics,
hosting & annoyances



www.melbpc.org.au

MELB PC PURPOSES

THE PURPOSES OF THE GROUP are to conduct, on a non-profit basis, activities aimed at the effective utilisation of the personal computer and to endeavour to achieve such effective utilisation by means of:

- Advancing computer literacy
- Advancing the art and science of information processing through education and interchange of ideas
- Keeping members abreast of developments in computing and information technology and enabling members to exchange information and experience
- Representing computer users in public debate and by acting and speaking on their behalf where they would be affected by proposed legislation or other regulatory measures
- Providing a forum for the exchange of views among computer users and between computer users and the computer industry
- Co-operating supporting or joining with, or in, other organisations with similar purposes
- Undertaking other activities beneficial to the Group

In order to further its purposes the Group shall have the rights, powers and privileges of a natural person.

PC UPDATE

FEBRUARY 2014 • VOLUME 30 • ISSUE 1

EDITORIAL PANEL

Lance Lloyd, Charles Wright

EDITOR

Katharine Shade, CCE Design
editorpc@melbpc.org.au

ART DIRECTOR/DESIGNER

Katharine Shade, CCE Design

CONTRIBUTORS

Stephen Lake, Harry Lewis, Lance Lloyd,
Craig Mattson, Katharine Shade, George Skarbek,
Fleur Stephens, John Swale

SIG Coordinator: Norman Elliman

SIG Reports: Faye Barkla, Stephen Tidswell,
Jean de Neef, Susan Jensen, Kathy Rouse,
John Sapsford

Calendar and Maps: John Swann



PUBLISHED BY

MELBOURNE PC USER GROUP INC.

Suite 26, Level 1, 479 Warrigal Road
Moorabbin, VIC 3189

Office hours 9am-5pm
Phone (03) 9276 4000
Email office@melbpc.org.au
Office Manager Dianne Vogt
Office Staff Julie Ackland, Lauren George

COPYRIGHT

Melbourne PC User Group Inc. reserves all copyright in the content and design of *PC Update* (this publication).

PC Update must not be republished in whole or in part using print, electronic or any other formats (including optical and flash media together with the Internet).

You may make a copy of part or all of *PC Update* on your local computer for your own use, and print a hard copy of *PC Update* for your own use, provided that you do not remove any copyright notice on any page. You may not, in any form, or by any means:

- cause any of the material in the *PC Update* to be framed or embedded in a website,
- commercialise any material in *PC Update*,

- otherwise reproduce, adapt, store in a retrieval system, transmit, print, display, perform, publish or create derivative works from any part of the content or design of *PC Update*, except with our prior written consent or as permitted by applicable copyright legislation.

Members who breach copyright will forfeit their membership rights and may be subject to legal action from the authors and copyright holders.

Copyright © 2014 Melbourne PC User Group Inc. and individual authors. Except where otherwise stated, all material is the copyright of the author. Contributions from authors may not be copied without the author's prior written permission.

Cartoon	Terrible Lizard	3
Melb PC	Directory	4
Columns	PC Update Editor's Report.....	5
Columns	Melb PC President's Report.....	6
Articles	Website Basics – Katharine Shade	8
Articles	Web hosting – What are you Really Buying? – Fleur Stephens and Craig Mattson.....	11
Articles	Website Annoyances – Stephen Lake	13
Articles	Hints and Tips: Useful definitions: URLs and domains – Lance Lloyd.....	16
Columns	Random Access – John Swale	18
	Q&A – George Skarabek.....	20
SIGS	Local/General and Special Interest Groups.....	23
	Group Reports	24
	Group Details	31
Melb PC	Notices.....	37
	How to Get Help	38
	Melb PC Committee	40
	Application Forms	42
	Notices.....	46
	Calendar.....	48

Terrible Lizard



© 2014 C. Knight

iHELP (See [page 38](#) for more details.)

iHelp

The main iHelp system for Melb PC members:

<http://ihelp.melbpc.org.au/helpdesk/iuser/index.asp>

First Aid and Internet Help Line

For simple and urgent problems.

(03) 9276 4088, Monday to Friday 10am – 3pm.

Help via Email

help@melbpc.org.au

If no web page access.

Dial Help

Volunteer list: <http://www.melbpc.org.au/help/>

ONLINE SERVICES

Internet Service

Melbourne Local Access (03) 9697 4000

Intranet Service

Melbourne Local Access (03) 9697 4004

Melb PC Home Page

<http://www.melbpc.org.au>

Internet Services Page

<http://www.melbpc.org.au/isp/>

MANAGEMENT COMMITTEE

committee@melbpc.org.au

President

Harry Lewis president@melbpc.org.au

Vice-President

Charles Wright vicepresident@melbpc.org.au

Treasurer

Geoffrey Keenan treasurer@melbpc.org.au

Secretary

Ian Rankin secretary@melbpc.org.au

Members

Norman Elliman normane166@gmail.com

Phil Lew phil@melbpc.org.au

Lance Lloyd lance.melbpc@fastmail.fm

Don McKenzie dimck@solemate.com.au

Roger Wragg rdwragg@fastmail.fm

HONORARY LIFE MEMBERS

Ray Beatty

Lloyd Borrett

Dave Botherway

Douglas Brooke

Sean Clarke

Thomas Coleman

William Dair

Guiseppe De Simone

Bruce Elliott

Bill Ford

John Hall

Stan Johnstone

Philip Lew

Barry Martin

Barry McMenemy

John Morris

Ash Nallawalla

Ian Rankin

George Skarbek

Peter Smith

Richard Solly

John Swale

Gary Taig

Ken Thomas

David Webster

Ian Webster

Yvonne Webster

Glen Webster

Charles Wright

SUBMISSIONS

Email your submissions as file attachments to editorpc@melbpc.org.au. Standard document formats are accepted (e.g. .txt, .rtf, .doc, .docx). Please keep formatting to a minimum.

Accompanying graphics should be separate high-quality JPG or PNG attachments – NOT embedded in the document.

Members' free ads must be technology related and include the member's full name.

AUTHOR RELEASE

All authors must lodge a completed submission form, available from <http://ccedesign.com.au/melbpc/release-form>.

SUBMISSION DEADLINES

March 2014 issue:

9 February (16 February for SIG reports)

April 2014 issue:

10 March (17 March for SIG reports)

Unless other arrangements are made with the editor.

PC Update Editor's Report

February 2014

By Katharine Shade

editorpc@melbpc.org.au

This month's cover is a good reminder to those still running XP PCs that there's not long to go before security updates run out. If it connects to the Internet, take heed of the advice to sever that connection from the beginning of April.

I still haven't found the time to cut the cord to my old Windows XP machine, with the issue of email still to be sorted out.

Curiously all that "free time" over Christmas for catching up on various overdue tasks evaporated when taking into account the demands of two young kids as well as some scorching weather during which my brain automatically shuts down for self-preservation. I'm surprised my computers didn't do the same as my office is in a sunroom, which frequently gets too hot to work in (thank goodness for laptops).

So, I'm still stuck in limbo between Outlook Express, Outlook, Thunderbird, and whatever Microsoft's OE alternative is called now. Oh yes, it's Windows Live Mail (not to be confused with Vista's old Windows Mail).

These are all email clients, which means the program resides on my computer and mail is downloaded from the server.

While I love using Google's search facilities on my email online (all my email is routed through Gmail so that I have access to all of it no matter what machine I'm on), I do still want to have the email physically on my machine, not just in the cloud. So using just

Gmail or Outlook.com are not options for me (although I'll continue to route everything through Gmail).

I keep going back to Thunderbird, and I keep really wanting to like it, but it just doesn't seem to be working intuitively enough for me. I might just have to bite the bullet and give Windows Live Mail a chance.

A contributing factor to my dithering over my best long-term solution, is that I have a huge amount of Outlook Express archived email – over 6 GB worth, going back a long time. I just had a quick look and found a couple of emails from 1996 which mention Eudora, Netscape 3, Windows 3.x and the length of time it takes to download updates via a 28.8 modem.

I seem to be a bit of a "data hoarder". I don't like deleting emails or files just in case one day I want to refer back to them. Even just then I went on a waltz down memory lane reading an old email exchange with some dear friends. It's all a record of my past, so much of which is forgotten as the years roll on by.

Due to their quantity, I doubt every email will be pored over by my childrens' children the way I pored over the precious diary my Grandmother kept during her 12-month stay in England in her teens, but hey, data storage is so cheap these days, it's less effort to keep everything than work out what to delete!

My descendents can work out what to do with it all, assuming it hasn't been destroyed by an EMP (Electro Magnetic Pulse). ☹



PC Update deadlines

Type of Copy/Timeline	March Issue	April Issue
Articles for publication; feature articles, reviews, letters to the editor, member ads	9 February 2014	10 March 2014
SIG Reports	16 February 2014	17 March 2014
PC Update available for download	26 February 2014	26 March 2014

Melb PC President's Report

February 2014

By Harry Lewis

president@melbpc.org.au

Email upgrade – nearly there!

We are now very close to switching our email service to its new Microsoft hosts. If you use your Melb PC email address, you will have received messages from us urging you to Activate your new accounts immediately if you have not already done so. We plan to switch over to the new email service very shortly after 17 February, but it's important to Activate because that date is our final deadline for the reporting of difficulties, and members who miss it may also miss incoming email. (The short gap is there only to enable us to deal with all reports of difficulties received up to the deadline. But don't delay, as some problem cases involve detective work that takes time.)

At the switch over we, as licensed owners of the 'melbpc.org.au' email domain, inform the domain name servers of the world that email directed to addresses in our domain shall now be sent to a Microsoft server. This happens for ALL email sent to addresses in our domain. If there's no account with your personal address in our new service, or there is such an account but it has not been Activated, the email will not be received. We expect such email to bounce (the sender will receive an error message indicating that the email was undeliverable) but we're not sure that will always happen. Some incoming messages may simply disappear without trace.

Members who have Activated are already discovering the other facilities that come with our new email accounts. Our old webmail provision (Endymion) was minimal – basically only a small inbox, with no other folders, and no supplementary features such as automatic forwarding of

mail. At Outlook.com we can arrange forwarding to other addresses, fetching from other accounts, and sending vacation ('out-of-office') replies.

There is a toolbox built in to the email interface where we can change how junk mail is dealt with. We expect Microsoft's junk mail filtering to be first-rate, but ours is an old email domain, and many of our members have long-standing email addresses, which has given them plenty of time to be picked up by the hidden army of spam-senders. If we wish, we can be very restrictive indeed about email allowed into our inboxes, using the options provided.

Also in the package is a SkyDrive (cloud file storage), an address book ('People') and a calendar. All three of these can be synchronised with your desktop.

SkyDrive holds up to 7 GB of files, and there are apps for Windows (post-XP versions), Mac OS X, iOS and Android which give access to the same files in a folder on your local computer. (It's also possible for Linux users, with the help of a third-party app) SkyDrive is integrated into the email system for sending large attachments directly from Outlook.com; they are transmitted as links rather than as full-size files.

Members who use more than one computer, or a mobile smart device as well as their computer, will find these new facilities invaluable.

Windows XP – time to say farewell

Microsoft will cease to issue security updates for Windows XP early in April 2014 (the announced date is 8 April – the final 'patch Tuesday' for XP users). We touched on this topic last month. Recently Microsoft has slightly blunted the impact of the change by declaring that it will issue reports



on new security loopholes and will keep Microsoft Security Essentials updated for XP. They have not said that they will remove those loopholes. So the only guaranteed safe path for Windows users after that date is never to expose a computer running XP to the internet. (That includes 'hosted' instances of XP such as the Windows XP mode available for higher versions of Windows 7.)

For most members who are still using Windows XP, the natural way forward is to replace their computer with a new model with a later version of Windows installed. But each member's needs are different. There are many aspects to this decision, and we shall outline some of them on our website for members to bear in mind.

A side-effect of the move from XP will be a need to move on from Outlook Express for your email. Outlook Express was bundled with Windows XP but is not available for later versions of Windows. Members using Outlook Express will need to use another email program – or rather another email facility, either a mail program, or webmail. It is fortunate that in outlook.com we shall now have a fully-featured webmail service. If you are starting now, there's little point in configuring

your Outlook Express for the new Melb PC email service, as this will only add to the overhead cost of moving your email in a few weeks' time. It's far better to use Outlook.com webmail for the new service. If you wish to retain your archive of past emails you will still have some work to do, to move it to your new operating system. That overhead cost is already fixed.

Volunteers please – for training, marketing and membership

This month we are asking for new volunteers to help with developing new training programs. Jan Weiner is leading this initiative. There is also plenty of work to do in the areas of member recruitment and in marketing our existing facilities and services. Lance Lloyd is the person to contact on those matters. Please read the announcement on [page 37](#).

Feedback

Please send any comments you may have on these topics or any others that concern you about our club to: president@melbpc.org.au. If you would like to start a wider discussion a good place to air your views is the Melb PC thinktank newsgroup: melbpc.thinktank. ☺

Melb PC Library Information

As a service to members of Melbourne PC User Group, a reference library of approximately 600 computer books is provided at our library at our Moorabbin offices.

Members who are able to come in to the office may browse what is available, or borrow a book and retain it on loan for a period of one month. A limit of three books may be on loan to any one member at one time.

To assist in book selection, a link to the catalogue of the available books is shown together with a copy of the library rules for the information of members.

Catalogue Listing to Dec 2013: (http://www.melbpc.org.au/library/LIBRARY_Catalogue_01-12-2013.pdf)

Some of the newer books include:

Windows 7 Inside Out
Windows 7 Step by Step
Windows 8 Bible
Windows 8 Secrets
Windows 8 Step by Step

Windows 8 Teach Yourself Visually
Windows 8 for Dummies
Windows 8 Inside Out
Windows 8 Plain & Simple
Windows 8.1 for Dummies

Website Basics

Following on from Fleur Stephens' WordPress article in the December issue of *PC Update*, KATHARINE SHADE takes things right back to basics.

The variety of websites is vast, ranging from small (such as a place to publish your family tree), to medium (such as a small business using it as a marketing platform and selling a few products) right through to large corporations.

At its most basic, a website might have a few HTML pages. This is like a word processing document, with the "code" being interpreted by the reader's web browser to display in certain ways. For those who remember the early WordPerfect days, the simplest HTML (hypertext markup language) formatting it is quite similar in terms of code like:

```
<h1>My Heading</h1>
<p style="color:red">This is in red</p>
```

With the results being:

My Heading
This is in red

As with the development of word processors, it's no longer necessary to hand-code web pages most of the time as so much is built into

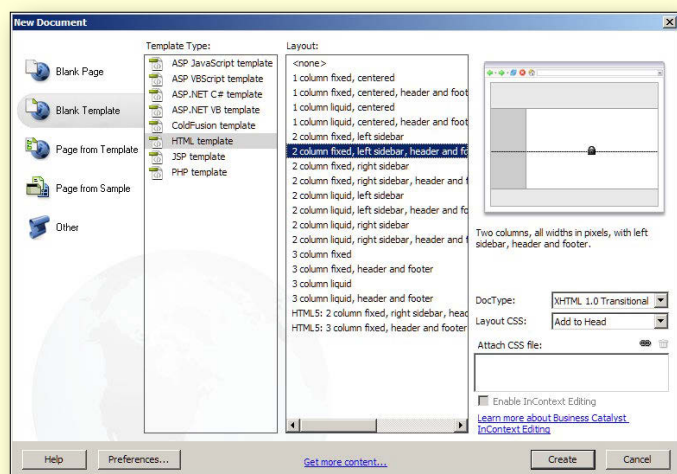
the user interface of the program you use to create web pages. These include Dreamweaver (www.adobe.com/Dreamweaver) and freeware programs KompoZer (<http://kompozer.net>) and Blue Griffon (<http://www.bluegriffon.org>).

Tables, stylesheets, inserting images (which are uploaded as separate files to the HTML files), creating hyperlinks and so on are all part of the process. Most word processors can even save documents as HTML files and get a workable result (yes designers, I know it produces messy code!).

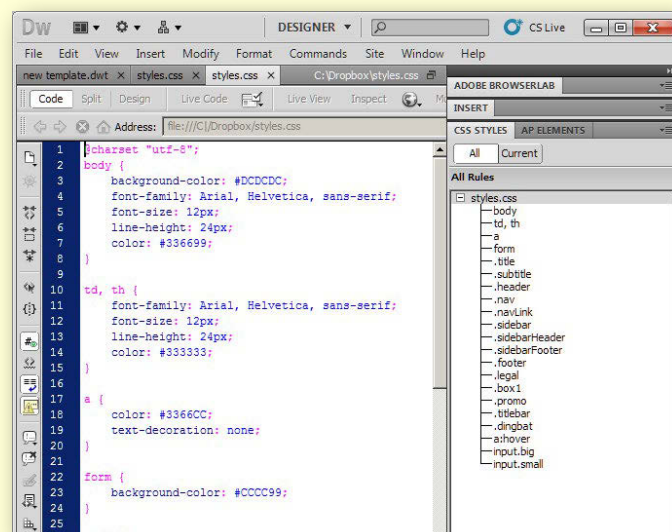
For a website with more than a few pages, it becomes helpful to use templates and stylesheets to save a lot of time in getting the site to be stylistically uniform and user-friendly.

Templates

Templates are a bit like the headers and footers in word processing documents – they contain the elements which are the same throughout the site. On web pages they can appear anywhere on the page, most often appearing across the top of the page as a headline banner of the site,

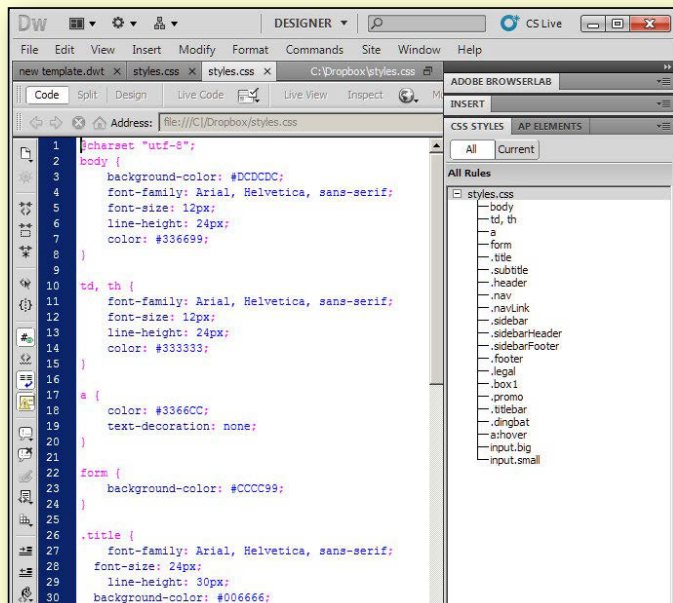


Dreamweaver's built-in basic templates: "2 column fixed, left sidebar, header and footer" is selected.



The resultant template.

site navigation via menus (any combination of horizontal across the top, horizontal across the bottom and vertical down the left or right side),



The styles.css file contains the formatting information for all of the styles.

and general design elements such as colours, logos, backgrounds and images.

By using a template (or a series of templates for a larger site, or separate HTML files for separate components to be called in), you can easily adjust the entire site. For example if a new menu item needs to be added to the navigation, a logo or colour scheme needs to be changed, or the copyright blurb at the bottom of the page has to be updated.

Stylesheets

Stylesheets (CSS – Cascading Style Sheets) are another important tool for site consistency and the ease of making global changes. A section of code, which can be a separate file (e.g. styles.css), embedded in the coding of a template, or within the coding of an individual page, is referred to by shorthand rather than having to create the styles at each occurrence.

[continued...]

Web hosting

Even if you are not creating your website locally on your computer and uploading all the files to a server, you still need web hosting of some kind.

1. Free

Some services such as WordPress (WordPress.com, not WordPress.org) provide a CMS and enough space for a free basic website. There are other free services around, often with a small amount of space for files to be uploaded via ftp and may even place sponsored advertising on your web pages.

2. ISP

Most internet service providers give you a fair bit of storage these days (Including Melb PC), with varying amount of facilities in terms of support, CMS etc. The downside is that your website address is tied to the ISP, e.g. <http://yourisp.com.au/joeblogs>.

3. Paid hosting and domains

Generally, if you are buying web hosting space, you will also be purchasing your own domain, which could be e.g. <http://www.joeblogs.com>. Your own domain means that your website address and email remain the same no matter who your ISP, or even your web host might be.

The following organisations are .au Domain Administration Ltd (auDA) accredited registrars. This means they are authorised by auDA to provide services to people who want to register a new domain name, renew their existing domain name, or make changes to their domain name record: <http://www.auda.org.au/industry-information/registrars/list-of-accredited-registrars/>.

Most also provide hosting and email services (and often provide a discount on bundled purchases), although you are not tied to the registrar from whom you purchased your domain. Companies all have varying plans and prices in terms of what they offer, e.g. some offer only their own CMS, while others support many different systems.

[...continued]

Think of the Heading 1, Heading 2, and text body styles of text in a word processing document.

By keeping styles in one place like this, it is easy to adjust fonts across the whole site. Want blue instead of red text for headings? Done. Headings a bit bigger too? Done. Quoted text centred instead of justified? Done. And not just text – entire elements can be styled, such as containers for text or images, backgrounds, positioning of elements on the page and more. Styles can even be based on other styles (hence Cascading Style Sheets) so that a change to one style such as font can feed down to all other styles based on it.

Moving up a level – CMS

If you add one more level of user interface (UI) you have a web site which is created by using a “content management system”.

A CMS usually resides on the server where your site is hosted (i.e. not on your hard drive), and is an application to create, manage, store and deploy content on web pages. It can catalogue and index content, select or assemble content at runtime, or deliver content to specific visitors in a requested way, such as other languages.

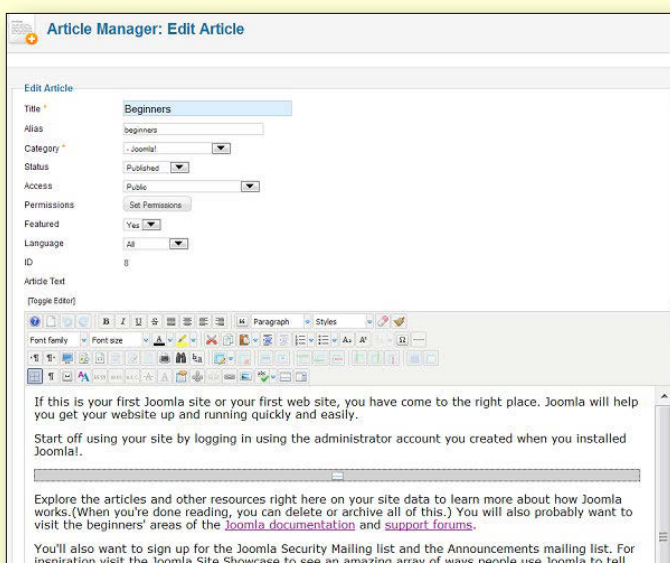
Easy to use for non-technical people, but also including a lot of room for the more experienced to customise, the admin UI allows updating of content with little training or knowledge of

coding, file transfer (ftp), system maintenance etc.

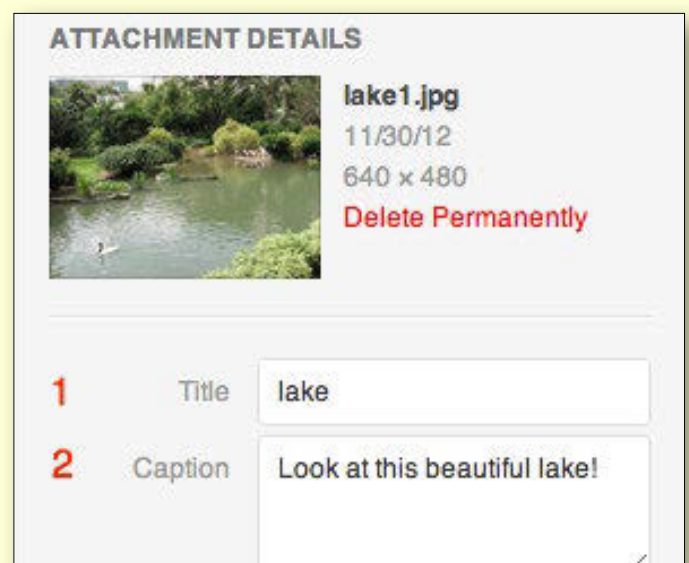
There are many templates to choose from which you can personalise (often by using coding-free techniques like drag and drop). To be one more step removed, many individuals and businesses have a professional web developer set up their total site initially and then use the CMS to add their day-to-day content.

Content is easily dropped into the CMS, which deploys it to the correct spot on the site. For example, you may have a section on your website for book reviews. By entering your latest review into the CMS database, typing like in a word processor (or copying and pasting from a file on your computer), the system will automatically add it to your review page, with further automation of tasks possible such as publishing just the first few lines on a summary page, with a link included to lead to the full review.

WordPress is the most popular web CMS. It was originally created for blogging, but it has developed and expanded into a full CMS (see December *PC Update* for more information on WordPress). Other popular content management systems include Joomla! and Drupal. Many of these systems are free, and most web hosting services these days include some kind of CMS, or can install them on request. ☎



Joomla!, a very popular CMS.



WordPress

Web hosting – What are you Really Buying?

By Fleur Stephens

Webspace

These days most web hosts provide clients with more space than their site could ever use, well this year at least! A webspace that offered 20 MB was more than enough in the 90s. Now sites can often include videos, high resolution graphics and documents that are many megabytes each.

How Much?

Before you purchase your web space, determine what you need to hold your graphics, documents, videos, photos and other facets of your site, then double it, ensuring ample space to improve or alter your site in future. I would not recommend a web space with anything under a Gigabyte of space.

Technical Support

Many web host providers offer different levels of support for different hosting plans. It is quite common for cheap plans to only offer support by tickets; usually this means you fill in a form and wait for the response. Some hosts make the use of tickets child's play, while others turn it into a nightmare. Phone support is available with some web hosts.

Some web hosts provide information on their site to inform clients of problems with servers or network failures, reducing the need to call should your website not be available.

Most web hosts offer FAQs and tutorials to help

beginners, further reducing the need for support.

Server Location

Web servers can be located anywhere in the world. A benefit of a local server is faster download times for Australian users. A web page is listed and searched as located in Australia when it is hosted in Australia, reducing the need for obtaining a (more expensive) .com.au address for the page to show up higher in search results for searches originating within Australia.

Domain Management

Domain name management tools can enable you to direct your domain name to the server hosting your website and to the server hosting your email.

I had assumed domain management tools would be standard with the purchase of a

domain name, but you must read the fine print! DNS hosting packages are not all the same, e.g. pointing your domain name to a different website is seldom free unless you purchase from a registrar that offers their own DNS hosting.

Subdomains

A sub-domain is a domain that is part of a larger domain. For example, west.example.com and www.example.com are subdomains of the example.com domain. You can set up a website so that a sub-domain points to a particular part of your web site, e.g. a folder in the public_html section of your site. You can then turn a folder

[continued...]

What is Web hosting?

Web hosting is the storage of data on a server, generally for the purpose of publishing a website online.

[...continued]

into a distinct partition within your main site, but separate from your used url. For example, if I create a subdomain called m, the url to reach the subdomain is m.example.com, while the website still resides at example.com.

When I log in to my site via FTP my subdomain is simply a folder in my public_html called m. Each subdomain can enable you to install a website of your choosing in the subdomains folder. For educational and experimental purposes subdomains are fantastic as they enable you to run an installation of WordPress, Joomla or any other CMS separate from your website, while still using your webspace. This can be particularly useful if you want to add a mobile site or create a site in another language.

Uptime Guarantees

Uptime guarantees are usually for unscheduled downtimes that occur in the event of an unforeseen problem. This may include hardware faults, software problems etc.

Scheduled downtime is the time a server is taken offline for maintenance (upgrading software or hardware) and is generally not counted as part of your uptime guarantee.

A 90 per cent uptime guarantee results in an acceptable maximum unscheduled downtime of 36.5 days per year. A 99 per cent uptime guarantee may result in an acceptable downtime of 3.65 days per year, while a 99.9 per cent uptime guarantee is an acceptable downtime of 8.76 hours per year.

Beware of web hosts that offer the five nines (99.999 per cent) – that's a very unlikely 25 seconds a month!

Uptime does not necessarily guarantee that your website is accessible to the public, it is dependent on there being no network issues along the way which are out of their control. ☹

With Craig Mattson

BREAKING NEWS – Our Melb PC Online SIG

Our Melb PC Newsgroups have had a name change to "Online SIG". As always, we are open 24/7 and eager to have a chat or help solve a problem. Whether your computer is having a meltdown, or a strange bug is eating the leaves of your camellia, or you want to buy or sell items, we are here to help at all times day and night.

Jump in now and read the conversations. Before long you'll be joining in too.

We had a feisty conversation about the Federal Government's proposed changes to the education curriculum in State schools, as well as one on the new car number plate format, as well as discussing eBooks for your tablet device.

If you can't find a conversation that interests you, wait a few minutes. You are sure to find one. Of course you could start your own topic, or just ask for help in our Online SIG.

We have fourteen groups within our Online SIG, each with a different emphasis. You can read some of the conversations by logging into <http://forum.melbpc.org.au/newsforum> with your Melb PC username and password. When you are ready to start a topic, join a conversation or ask for help, you can setup a newsreader utility on your computer, e.g. Thunderbird. We will help you with this. Here's the place to start <http://member.melbpc.org.au/~anywhere>



Website Annoyances

By **Stephen Lake**

The design of many websites is abysmal. Too often the people who manage the website have little appreciation of users' needs. The prevalence of poor design suggests that those designing the websites have little knowledge of this either.

Some of this assessment will be subjective; much of it objective.

Modern technology is a blessing and a curse in that anyone can use software and the Internet to create something that formerly involved a greater effort. Whatever the case, poor design costs.

Many good printing design principles apply to web page design.

1. Readability

Readability relates to how easily and comfortably words can be read. Readability is determined by the font size, typeface, line spacing (leading), contrast, colour, font spacing (kerning) and other factors. If words are not legible and readable then the person who arranged the layout has failed.

2. Font choice: Serif vs Sans-serif

It is generally held by design professionals that for blocks of text in printed works such as books, newspapers magazines and the like, serif fonts are easiest to read. However, viewing distance and a lack of resolution means that serifs would be lost to some extent on screens. As the name implies,

Serif: Times New Roman

Serif: Minion Pro

San Serif: Arial

San Serif: Franklin Gothic

Figure 1

sans-serif fonts lack serifs, being plainer and easier to read on signs and screens. Sans-serif fonts are also suitable for printed headings, as they stand out from serif text in paragraphs. (See Figure 1.)

3. Font size

Fonts should be bigger on many websites and this also applies to operating systems. Too much information on a screen or page is counter-productive. Instead of designers cramming words on a screen it's far better to have a menu of related topics, analogous to printed headings, paragraphs and perhaps chapters.

Fonts are often unnecessarily small in a narrow line or window on the screen. Sometimes a screen will have a few words that are so small they cannot be easily read, and the rest of the screen remains unused. Sometimes the font is so small and faded that reading is a struggle.

While font size can usually be adjusted within the browser by the user, designers often base their layout on a particular size and so a larger font size can "break" the design, with fonts overlapping other elements of the page, being cropped etc.

4. The fold

Another print design concept is "the fold." A newspaper may be folded so that only the top half is visible, which has important information such as the newspaper's name, the date, and the main story. Similarly, when designing websites, most or all important information and links should be at the top, bearing in mind the effect of different screen sizes and resolution.

5. Contact forms

Many websites have a contact email link. It's simple: click on the email and you go straight to your email program. Unfortunately, people on public systems do not have an email client, and

[...continued]

cannot easily complete the email process. The remedy is simple: in addition to a direct email link, have a form, with a copy going to the user's email address by default. Such a form may even be simpler for the entity as enquiries can be sent to the correct area. Quite dreadful forms abound. The boxes are too small, the text is tiny and fonts are faded. Often there is a vast amount of space beside the form. Why?

[Ed: Website templates, which form the basis of so many websites these days, often include a default contact form. It's probably small so that it can be used across a number of different templates and be easily modified to fit the space available. The designers using templates as a starting point for creating websites should maximise the use of the space for the forms while still allowing for viewing from variously sized devices. They should also think hard about which fields are necessary (e.g. phone numbers are generally not), and which fields are compulsory (e.g. Mr/Ms), as many should be removed from the template form. – KS]

6. Enquiry forms

Enquiry forms are useless if not sent to the appropriate person, read, understood and actioned properly. For example:

- An enquiry was made about the availability of a booking. It was necessary to give dates on the enquiry form. The reply said that the booking had been made and that I should pay it.
- I asked for the precise location of a building and was given the address – which I cited in the enquiry. This section of country road where the building is located is about five kilometre long, and the map was out by several kilometres.
- I asked an entity if they had a vacancy and received a reply – yes, we have a vacancy. There was no name, no address, nothing! I worked out where it was, eventually. Probably.

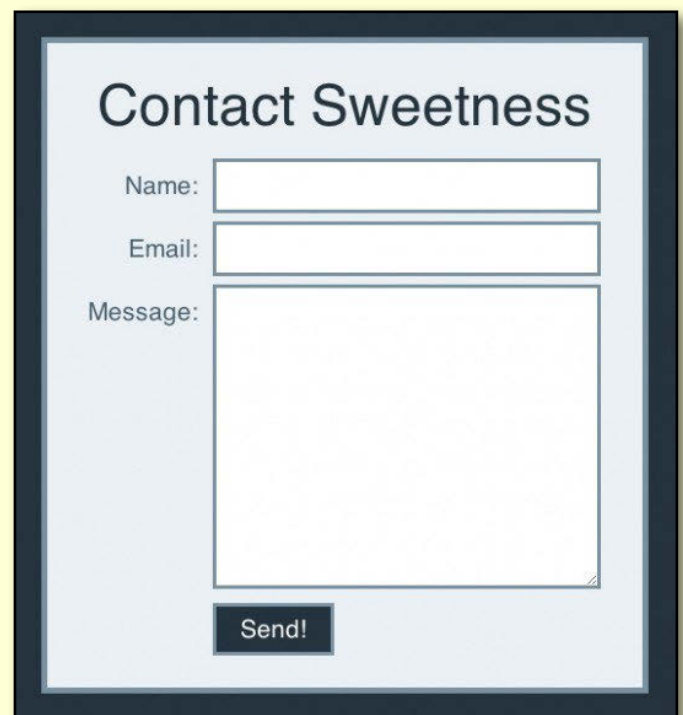
- I asked how certain sensitive information was to be provided. The reply said that they did not give personal details by email. But I did not ask for such details; I asked *how* they were given.

7. Contact information

When seeking information from a website, I expect the basics to be there. Unfortunately, all too often it's necessary to phone to obtain this information. One major feature of the Internet is that basic information is or should be readily available. Using a phone to get basic information wastes everyone's time.

Some recent examples:

- A phone company did not give all details on their website about a mobile phone, and they did not respond to an email.
- A hotel website had an address but no map.
- Another hotel had a website but no email.
- A property for sale had no address, price, floor plan or block plan. The agent advised that his firm wanted people to phone, and would not provide anything by email.



A clear, basic web form.

8. Up-to-date content

With current technology you would expect that online information would be correct and up-to-date. Unfortunately this is not always so. For example, I recently sought a link to an annual exhibition, but the top results showed exhibitions of earlier years.

Mortgage and deposit account interest rates often change as the Reserve Bank of Australia changes its rates, which may happen each month. For the following week it's hard to know what the correct rate is on comparison websites. On several occasions I've seen comparison website figures that lag the market by up to 3-6 months. It takes time to determine if the figures are accurate, somewhat negating the purpose of the comparison web sites.

9. Site searching

I've seen websites where the user has to know the exact name of the item in question and the category into which it fits to use the search function. On some websites where I've given up, Google has easily and quickly found the answer.

When searching on property websites, several filters can be used, such as location, price, number

of bedrooms and car parking. Their definitions do not always match my expectations. For example, to most people a house is a free-standing building. Property websites have much wider definitions, one of which includes apartments, semi-detached terraces, duplexes, new home designs, penthouses, and villa units.

Results don't always match the input. For example, prices can be 30-80 per cent higher than the upper limit of the search parameters, and after selecting a sort order by price, the display order is not by price. Auctions may have no price shown.

If you doubt that poor websites cost, see the following:

<http://www.rakemark.com/blog/bad-website-design-can-cost-billions/>
<http://www.netlz.com/seo-blog/2012/04/27/cost-of-a-bad-website/>

<http://thebuzzfactoree.com/five-ways-youre-losing-business-with-bad-design/>

Whatever the client wants, it is the job of the website designer to adhere to high standards that give a good result, i.e. clarity and relevance of the information. Gentle education of the client on these matters may be necessary. ☺

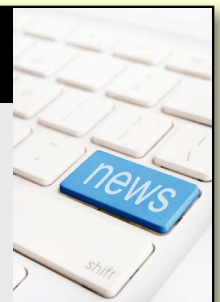
"Designers who play with type until they have rendered it unreadable are engaged in a destructive act that hurts us all. Hard-to-read [design] is useless in today's fast-paced world."

– Richard Lewis, writing about printed works. This applies to screen words as well.

BREAKING NEWS – Our Melb PC Online SIG

An Online SIG (Newsgroup) post reminds us "Windows XP holdouts: 3 reasons you must upgrade now. Yes, now." In another report we hear that Microsoft are trying to move past Windows 8 as fast as possible, with a possible launch date of April 2015 for Windows 9, and with a proposed title "Threshold".

We are often first with the news in the Online SIG. Our technical experts will add their assessments and advice too.





Useful definitions: URLs and domains

By Lance Lloyd

Definition of URL

URL's or Uniform Resource Locator are a string of text or codes which a web browser uses to locate a webpage (or network resource) on the internet. These are displayed or typed into the address bar of a web browser. These can often be complicated and difficult to follow. However, they often follow the following format:

<http://www.melbpc.org.au>

Secure websites

Secure websites are those which use Hypertext Transfer Protocol Secure (HTTPS) communications protocol such as <https://www.commbank.com.au> and these designate sites which are secured to enable financial transactions to take place with less chance of information leaking to outside the participant's secure websites. They do this by using long term public and secret keys to exchange a short term session key to encrypt the data flow between client and server.

Domain names

A domain name is basically an address on the internet. It is what follows the "www" so "melbpc.org.au" is the domain name for Melbourne PC User Group. There are several different domain spaces such as .com and .com.au which often refer to the country the domain



space is registered in – obviously any ending in .au are Australian and those ending in .nz are for New Zealand and .uk are for the United Kingdom.

Each country administers its own domain name space and in Australia this is through .au Domain Administration Ltd (AUDA; <http://www.auda.org.au/>). This organisation approves various registrars (current 38 are accredited) who are able to sell the various domain names you may wish to buy (these Registrars may also use "Resellers" to promote their services but resellers are not regulated by AUDA but by the registrar itself).

There are also .org, .asn, .edu and .net domain names which are for Organisations,

The screenshot shows the ausregistry website interface. At the top, there's a navigation bar with links like 'About Us', 'Careers', 'Contact Us', and a search box. Below that, a banner for '.au Survey 2013' is visible. The main content area is titled 'Whois Domain' and shows the results of a Whois query for 'melbpc.org.au'. The results include details like Domain Name, Last Modified, Registrar ID, Registrar Name, Status, Registrant, Registrant ID, Eligibility Type, Registrant Contact ID, Registrant Contact Name, Registrant Contact Email, Tech Contact ID, Tech Contact Name, Tech Contact Email, Name Server, and Name Server IP. A note at the bottom states: 'Please note that there are restrictions in place on how many queries you can make. The query limit is 20 per hour from the same IP address. If you need to use a facility to check for the availability of a Domain Name, you can use our Domain Availability tool.'

Whois response for melbpc.org.au:	
Domain Name	melbpc.org.au
Last Modified	26-Jun-2012 02:38:00 UTC
Registrar ID	TPP Wholesale
Registrar Name	TPP Wholesale Pty Ltd
Status	ok
Registrant	Melbourne PC User Group Incorporated.
Registrant ID	OTHER N/A
Eligibility Type	Other
Registrant Contact ID	DIT1358
Registrant Contact Name	Internet Manager
Registrant Contact Email	office@melbpc.org.au
Tech Contact ID	DIT1358
Tech Contact Name	Internet Manager
Tech Contact Email	office@melbpc.org.au
Name Server	warrane.connect.com.au
Name Server IP	192.189.54.33
Name Server	varrina.connect.com.au
Name Server IP	192.189.54.17
Name Server	ns1.melbpc.org.au
Name Server IP	203.12.152.2
Name Server	ns2.melbpc.org.au
Name Server IP	203.12.152.3
Name Server	dns2.netica.com
Name Server	dns4.netica.com

HINTS AND TIPS: USEFUL DEFINITIONS



Associations, Education providers and technology or Internet companies. New domain name spaces are also becoming available such as .id (for individuals) and .biz (for businesses) mainly to allow further differentiation within the crowded domain name space!

You can look up who “owns” a domain name by going to <http://ausregistry.com.au/whois> and typing the domain name you are interested in. This will tell you who has registered the site and has the right to use it. No-one actually owns a domain name. If you wish to see if a domain name is available for you to register you can go to <http://www.aus-registry.com.au/tools/domain-availability> and type in your prospective name.

Subdirectories?

Subdirectories on web addresses are basically other pages within a website where additional information is held. Usually, websites consist of a main address and then information about the owner of the web address is given in other subdirectories generally linked from the front page of

the website as links or tabs. Melb PC's own website has these with the front page being <http://www.melbpc.org.au/> and on that page there are hyperlinked text (underlined blue text) scattered throughout the text on the front page and tabs under the header banner.

URL shorteners

In the case of long URLs there are various url shorteners such as Tiny URL (<http://tinyurl.com>), Google url Shortener (<http://goo.gl/>), or Bitly (<http://bit.ly>) and Owly (<http://ow.ly>) which allow you to create a short URL to publish or send onto a friend. For instance you can change this URL:

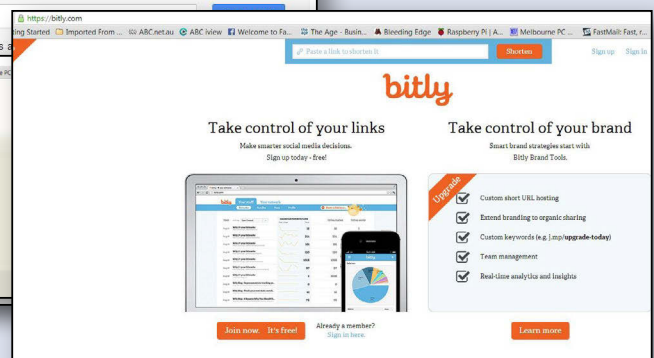
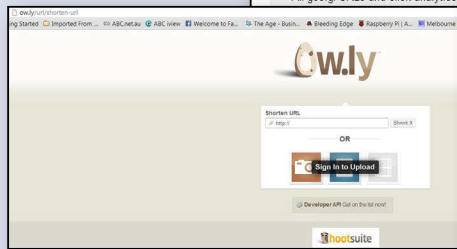
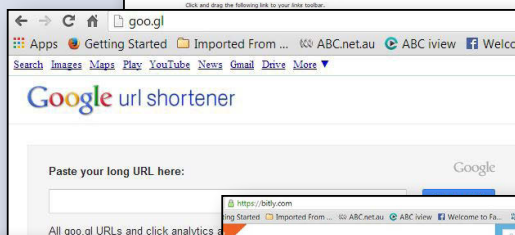
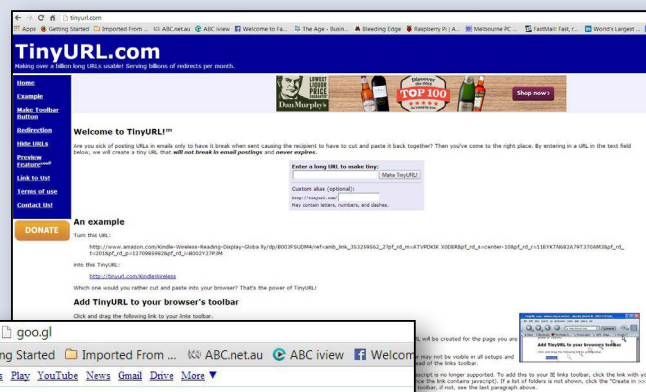
<http://www.theage.com.au/digital-life/digital-life-news/progress-in-healthcare-it-20140129-31le5.html>

into

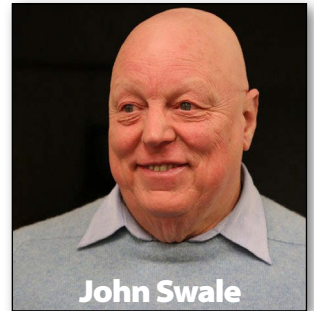
<http://goo.gl/MQ5LVX>

or

<http://bit.ly/LwmEgx>



JOHN SWALE reports on questions and answers from the opening session of the December monthly meeting as well from members' written submissions, as answered by BARRY MARTIN.



ZONEALARM HANGING AROUND

My PC is crashing and reports it is having problems with vsdatant.sys which is allied to ZoneAlarm in some way. This has been going on for a couple of months. I can't find it in the list of programs, but a search of everything shows it in system restore. I don't know if it is causing the system crashes. I am not running ZoneAlarm. What should I do?

It will be either an executable or a DLL. It is not a program but part of a system. If it has been identified then it is probably the problem. If you are not running ZoneAlarm, then it may have been leftover from a ZoneAlarm uninstall. ZoneAlarm has a habit of not fully removing itself when it is uninstalled and you can find bits of it all over the place. If you uninstall a program and suddenly find the system crashing you should do an immediate system restore.

The only thing you could do now is to run the System File Checker (SFC.EXE /SCANNOW) to see if Windows can find and fix any corrupted system files. [Ed: ZoneAlarm provides a cleanup tool which could help: <http://download.zonealarm.com/bin/free/support/download/clean.exe> -KS]

8.1 UPGRADE

I have Windows 8 on a new laptop. What are the perils of upgrading to Windows 8.1?

You should not have any problems as your machine is new and will be relatively clean. There are a number of advantages that make the upgrade worthwhile.

HOWARDANDMONICA

Friends of ours have a laptop running Windows 7 and were previously running Windows XP on another laptop. They imported some files onto the new system. Now when they run almost anything, a dialog box opens with "rundll c:\users\howard". On the old laptop there were two users "Howard" and "Monica". On the new system there is one user called howardandmonica. I searched the system using explorer and used Regedit and searched for Howard and it only found howardandmonica. Can you explain why this annoying dialog box keeps popping up?

What they have done is use the Windows Easy Transfer routine which is built into Windows 7. They would then have downloaded the equivalent for XP and run it on the old system to get a file which contained all the settings. This would have been saved to an external drive which was then attached to the new system.

They would have then run Windows 7 Easy Transfer to bring in the settings. (What Microsoft does not tell you is that it is best to do this when logged in as Administrator before you create any user accounts.) What this process does is take all of the settings and files under "Documents and Settings" in Windows XP and transfers them to "Users" in Windows 7.

Normally you would have it all there and then create any new users. What has happened to your friends is the settings for Howard are under user Howardandmonica but the system

is looking for user Howard. I have never tried to untangle one of these situations but I do know it is possible. Try checking the Microsoft Knowledge Base for "Windows Easy Transfer redundant accounts."

WINDOWS 7 RESTORE FAILURE

I have Windows 7 and I like to use Windows Restore when I have a problem. I can't remember the last time that the restore worked even if I go back several restore points. It comes up with a Failed To Restore message and I have to do a workaround to fix the issue. Any ideas why?

System Restore should work. I find it works very well. There may be something wrong with the actual system restore routine. Try creating a manual restore point and then see if you can restore from it. You need to run System Restore as Administrator even though your account has administrator privileges. Locate the System Restore exe file in the system folder, right click on it and click "Run as Administrator." ⚡

Random Access – Over to You

Please contact me if you have any comments on the answers given, can provide a reply for an unanswered question or if you cannot attend a meeting and would like a question asked and included in this column. Contact me via the office or email jswale@melbpc.org.au.

The Melb PC Newsgroups and Forum (Online SIG) are a very good resource for assistance with problems. To find out how to connect to them see <http://groups.melbpc.org.au/~anywhere>.

For a more general newsgroup introduction, see <http://www.melbpc.org.au/faq/news-groups.htm>.

Otherwise, search the Internet before asking questions here. In all cases mention the model or version numbers.

BREAKING NEWS – Our Melb PC Online SIG

In our Online SIG you will often find most interesting photographs and videos. Of interest at the moment are a video of flying into Queenstown New Zealand, a spectacular photo of rock walls taken the floor of Deer Creek Canyon in the Grand Canyon and an intriguing photo of a huge white shelf cloud capping brownish dirt from a dust storm, taken at sea off the WA coast.

At any time of the day or night there is always something interesting to see and chat about in the Online SIG (Newsgroups).

We have fourteen groups within our Online SIG, each with a different emphasis. You can read some of the conversations by logging into <http://forum.melbpc.org.au/newsforum> with your Melb PC username and password. When you are ready to start a topic, join a conversation or ask for help, you can setup a newsreader utility on your computer, e.g. Thunderbird. We will help you with this. Here's the place to start <http://member.melbpc.org.au/~anywhere>



GEORGE SKARBEK brings us answers to some curly questions.

SLOW AS A WET WEEK

Recently my computer has been running very slowly for a lot of the time. Any suggestions?

I have two suggestions that should enable you to find and fix the problem – assuming a scan using something like <http://www.malwarebytes.org> has not turned up anything malevolent.

As you have said that it doesn't run slowly all of the time, it is likely that a specific process is hogging most of the CPU or running disk activity at near 100 per cent capacity. To find out what it is, open the task manager by right-clicking on an empty part of the Task Bar and selecting Task Manager.

Next go to Performance tab and see if the CPU

usage is above 50 per cent when you do not have much running.

If there is a high CPU usage then click on Processes and sort by CPU usage. The top entry will most likely to be the culprit.

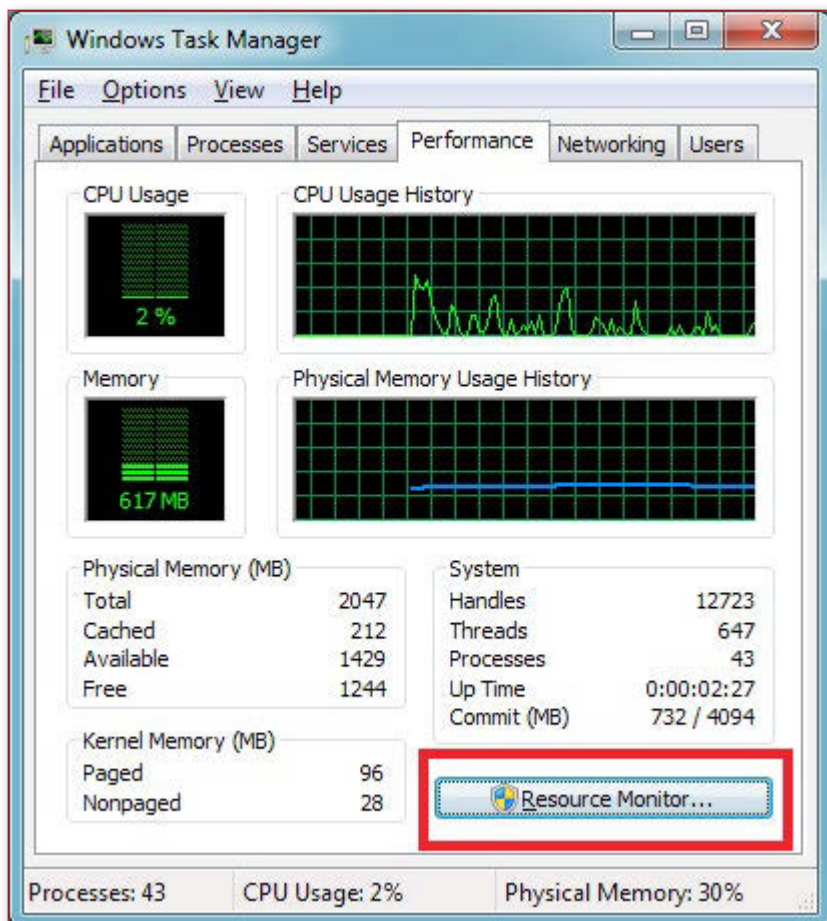
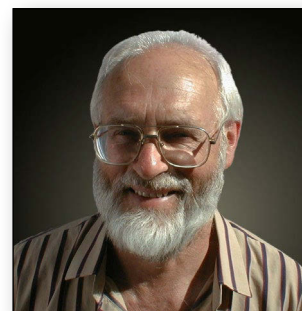
Uninstall the program if it is not needed, or prevent it from running on start-up if you only need it sometimes. If it is a program you need, check for updates. A fresh un-install/re-install might help, or perhaps find an alternative. Anti-virus programs are often the culprit, in which case there are a number of good free programs available (see <http://www.techsupportalert.com/content/probably-best-free-security-list-world.htm>).

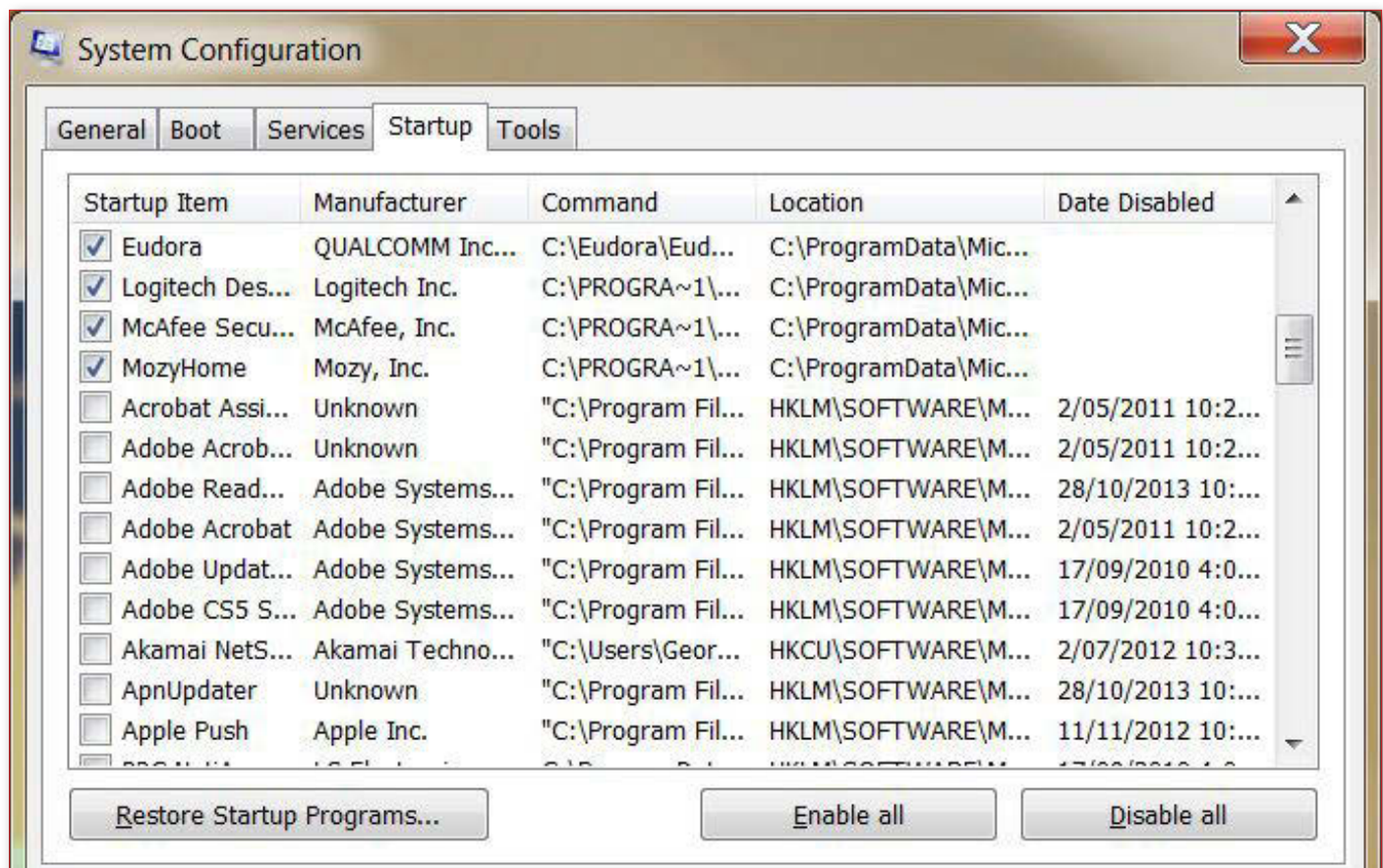
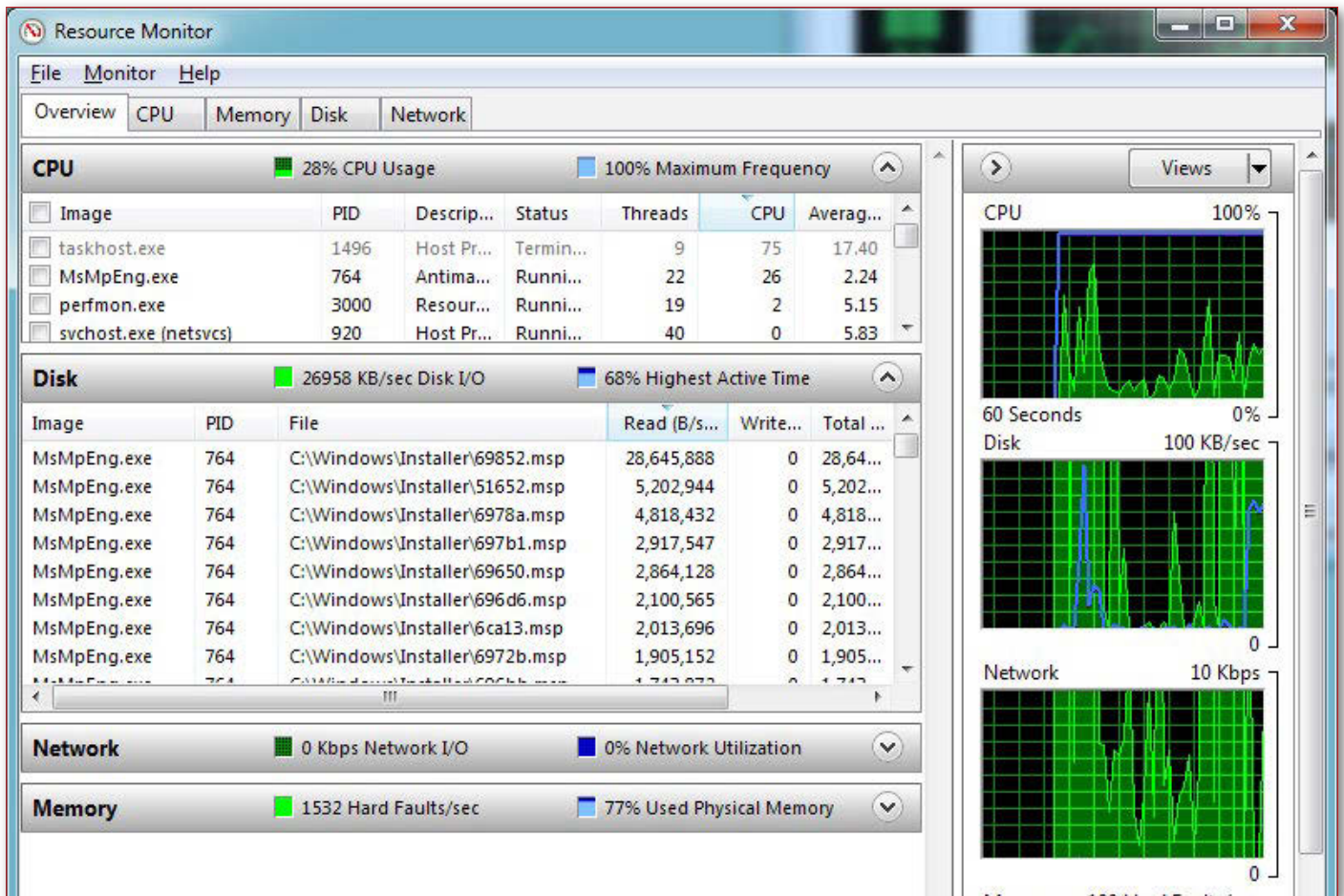
If the CPU is normal but the computer is slow then this may be caused by a program reading or writing constantly to the disk. Clicking on the Resource Monitor from the Task Manager will enable you to find what process is using the disk. Again consider removing that software if you do not use it or prevent it from starting automatically by running MSConfig.

To run MSConfig in Windows 7, press the Windows key + r to open a dialogue box and type in MSConfig. In the Startup section, remove the tick from all programs that you do not use several times a day. (In Windows 8 the management of Startup items is done in the Startup tab of Task Manager).

This does *not* uninstall the software but just prevents it from loading at startup. Common culprits are Adobe Acrobat and Apple's Quick Time.

[continued...]





[...continued]

MOVING HARD DRIVES

Recently I purchased a new computer. Can I move my old computer's hard drive to my new computer?

Putting the old hard drive into the new computer has a number of advantages. These include:

- You are utilising a hard drive that may otherwise be thrown away
- All your data will be transferred to the new computer
- The old hard drive will make a good back-up drive for the new computer. There are many good and free backup programs as well as synchronising software which ensures that new or changed files will be automatically copied to the other hard drive.

The disadvantage is that you have to physically open both computers to remove the hard drive and install it onto the new computer (and they must be compatible, e.g. IDE drives won't plug into SATA ports). This is not very difficult to do and there are many tutorials on web showing

how this is done. There is a group in Melb PC where you can obtain free help in doing this job. It is the East Workshop and meets on the second Sunday of the month at Wadham House, 52 Wadham Parade, Mt Waverley (Rear of Library) Melways 61 E12.

If the old hard drive is a laptop drive, you will need to purchase a Hard Drive Converter case to convert your 2.5" drive into a 3.5" drive so that it will fit in the computer casing.

If you do not wish to open the new computer then you can remove the old hard drive and purchase a Hard Drive Docker, so that you can plug the old drive into a USB port. This means you can also use that drive as a backup to a laptop.

After the old hard drive has been installed and working for some days or weeks, if you need more space on it then you can wipe all Windows files.

[Ed: Note that a second internal or external drive should not take the place of your regular off-site backups, as they're no help against theft, flood, being fried by power supply problems etc. – KS] ☺

Send your questions to george@melbpc.org.au

BREAKING NEWS – Our Melb PC Online SIG

According to Wikipedia: 'Phishing is the act of attempting to acquire information such as usernames, passwords, and credit card details (and sometimes, indirectly, money) by masquerading as a trustworthy entity in an electronic communication'.

A member posted a link to a very interesting online exercise in which you can check your ability to pick the rogue sites and phishing attempts. Check the results posted in the Computing Online SIG.

We are on hand to give you security tips and up-to-date information in the Online SIG (Newsgroups).

We have fourteen groups within our Online SIG, each with a different emphasis. You can read some of the conversations by logging into <http://forum.melbpc.org.au/newsforum> with your Melb PC username and password. When you are ready to start a topic, join a conversation or ask for help, you can setup a newsreader utility on your computer, e.g. Thunderbird. We will help you with this. Here's the place to start <http://member.melbpc.org.au/~anywhere>



Introduction

Groups of members with specific interests meet regularly to discuss and indulge their diverse interests. There are also local groups which cover more general topics. Often you will see presentations by visiting experts on a wide range of subjects.

This is where Melb PC membership really pays off. Enhance your computer knowledge and widen your circle of friends to include other members who have similar interests and, very

often, similar problems to solve. All members are most welcome.

This is part of your Melb PC membership, so feel free to contact any of the conveners listed here. Ask them about future meetings; ask them about the format of their meetings and anything else you need in order to get started.

Many of the groups have their own web page – follow the links from here: <http://groups.melbpc.org.au>

IS THERE A GROUP NEAR YOU?

Any suburb

Online SIG (was Anywhere,
Any-time – Newsgroups)
iHelp

Avondale Heights

Essendon

Ballarat

Ballarat

Balwyn

Video Inner East

Brighton

Bayside

Gisborne

Macedon Ranges

Hoppers Crossing

Wyndham

Wyndham Multimedia

Ivanhoe

North East

North East Android

North East Daytime

North East Genealogy

North East Photography/
Digital Imaging

Montrose

Yarra Ranges

Yarra Ranges Workshop

Mount Waverley

East Workshop

Multimedia

Hardware

Digital Photography

Raspberry Pi

Mornington

Mornington Peninsula

Mornington Peninsula Graphics
Workshop

Mornington Peninsula Genealogy

Narre Warren

Casey

Casey Workshop

Sunbury

Sunbury

Sunbury New Users,
Maintenance, Linux

Watsonia

Northern Suburbs Linux

Vermont South

East

Beast (Beginners East)

Geneast (Genealogy East)

Moorabbin (Melb PC Headquarters)

Access (Database) and Excel

Communications

E-Book

Everything Apple

Everything iPad

Graphics/Animation

Lan-slide Gaming

Linux & Open Source

Linux & Open Source Workshop

MACE

Making Money on the Internet

Microcontroller

Microcontroller Workshop

Music

Programming

Sony Video Production

WASINT (Web & Software
Investment Tools)

Website Design

Windows 7&8

WHAT'S ON THIS WEEK?

Check the calendar on [page 48](#).

Adobe Video

by Kathy Rouse

December 2013

Twenty-six attended the last workshop for 2013 which was also the last workshop for the time being. I am hoping that someone will come up with something to fill the void in 2014 and, if anyone has any suggestions or offers, please let me know.

June Furness' Creation – "Cumulus" Displayed in Maroondah Art Gallery

Those of you who attended our September workshop will remember the artistic video creation by June Furness entitled "Cumulus". You will be pleased to know that this lovely and inspirational creation is now running on a loop in the Maroondah Art Gallery.

At the opening of the December 2013 Mayoral Art Show, there it was, a lone DVD among all the paintings and drawings. June tells me that she received some very positive comments from the curator and other "arty" people. Well done and congratulations!

Our final meeting was, I thought, one of the best for the year. We covered a number of subjects and the videos that members showed were of a very high standard and enjoyable to watch.

Accessing copyright-free music, loops and beds for Adobe's Audition

Owners of recent versions of Adobe Audition can access Adobe's huge free audio library by clicking on the Help menu within the program and selecting Download Sound Effects and More... This will take you to the Adobe site where the free zip files can be downloaded after signing in with your Adobe ID.

There is even more available for purchase.

Timeline Playlists and Chapter Playlists in Encore

I demonstrated the use of playlists, which enable us to take more control of the navigational components of our DVD and Blu Ray Disc buttons

and menus. I strongly advise against the use of Overrides, which were designed before the more recent Encore versions enabled the creation of Chapter Playlists.

There are two very good video tutorials on YouTube:

[Building Playlists in Encore¹](#)

[Creating a Chapter Playlist²](#)

I have also embedded a link from the AdobeTV site on our site's tutorial page:

[Using Premiere Pro CC & Encore CS6 for Bluray, DVD, and Interactive Video for iPad, ATV, and Mobile HD³](#)

Write-on Effect in Premiere Pro

Most of us at some time or another will want to make a video of drawing a line on a map. I explained that this could be easily done in Premiere Pro, but due to a bug in the program since version CS4, this now involves a couple of extra steps.

Richard Balsillie has provided us with an excellent PDF tutorial on the steps you need to take:

[Using Write-on Effect in Premiere Pro⁴](#).

Members' Videos

The Videos that were shown epitomised what this group is all about. They included the following:

- Video depicting the history of the Point Nepean Quarantine Station – Geoff Telfer
- Trip to Chang Mai, Thailand, including the umbrella factory – John Healy
- Kimberley Islands – Barry Sheedy
- 3D printing using a machine compiled from bits and pieces in the Microcontroller SIG – John Shirt
- Whales of Hervey Bay – Lee Jones

1 <https://www.youtube.com/watch?v=CrWxiEyVX2A>

2 https://www.youtube.com/watch?v=4MXc7XG_fpM

3 <http://groups.melbpc.org.au/~adobevideo/tutorials.html>

4 <http://groups.melbpc.org.au/~adobevideo/Using%20Write-on%20Effect%20by%20Richard%20Balsillie.pdf>

- A humorous skit of a lady waiting for a train – John Thomson.

Thank you to everyone who attended the group during my time as convenor, and especially to

those who have given me so much support and assistance. I will miss you all and hope that we catch up at some time in the New Year.

Beast (Beginners East)

Jean de Neef

November 2013

Dave Botherway opened the meeting and invited members to report on any recently acquired items.

Recent Acquisitions

A Belkin Wi-Fi router, for which the buyer had to choose between WPA and WEP security options. Dave Botherway explained that a modem and router can be combined or in separate boxes. As Wi-Fi has a range of about 50 metres, you need some form of security to prevent people in the street from logging on.

WEP was an early version, which was easy to break into. WPA and WPA2 are much more secure.

Dave also showed how you can see available Wi-Fi spots (under Networks on your computer).

Q&A

What is airplane mode?

It turns off the signal transmitting system on a modem or mobile phone. When airplane mode is on, it stops incoming and outgoing calls. You can still do off-line things on your phone, but it's not connected to the Internet or mobile phone network.

When would you save a document to .xml?

.xml (Extensible Markup Language) is listed in Microsoft Word's Save options. It's a universal file format, a bit like .txt, which doesn't save text formatting. You can open it with a browser. It is used in web development.

What is a good scanner to get for OCR (Optical Character Recognition)?

There are stacks of inexpensive multi-function printers, rather than needing a dedicated scanner. The best result you can expect is probably about 95 per cent correct, after spell-checking the output.

One member suggested that the most accurate software is Adobe Writer OCR.

Handheld scanners are also available.

When I installed security updates, the computer remained stuck on item six for 15 hours. What can I do?

Restart and don't select item six. Try installing it by itself afterwards. If you find out what it is and it's not a critical update, you may not need it.

Miscellaneous

After the break, we viewed an amazing card trick video, then Dave talked about the current search for a new, larger venue that would accommodate our group as well as the larger East group. Anyone who can suggest a possible venue should contact Dave.

Q&A continued

How do Internet mailboxes work? (Topic carried over from last month.)

Email comes into your ISP's server from where it can be accessed either by the computer's client or by your web browser.

(a) Client access

Our computer's email client is a software package such as Outlook Express, Eudora, etc. It provides us with an inbox and outbox on the PC. When we connect to the Internet, the client downloads from our ISP and when needed, sends our outgoing messages.

(b) Browser access (WebMail)

Webmail is your usual email, accessed via a web browser instead of an email client. WebMail can be accessed by your computer or mobile phone.

You don't need to have an email client to view your WebMail.

Your browser looks into the ISP's server but it's important to understand the mail stored there is not transferred to your PC or phone. You are simply viewing (reading) it.

Likewise, if you send a message through WebMail, the WebMail software does not keep a copy for you, so if you wish to have a record you need to send a copy of that message to yourself as well as to the addressee.

Presentation: Windows 8

The biggest problem with Win 8 is the new touch screen. There's no Start button. To get one, you should add Classic Shell (free software from

<http://www.classicshell.net>). The computer can be set up to skip the Win 8 Modern/Metro tiles start screen.

Win 8.1 is free if you have Win 8. If you bought a retail copy or an OEM (Original Equipment Manufacturer) computer with Win 8 already installed, Win 8.1 is offered as a "Store" Update.

There is a Start button in Win 8.1, at the bottom left-hand corner of the screen, But Dave still recommends adding Classic Shell.

After installing, right click to bring up Options. Then, under Basic Settings, you can tick both Replace Win8 Start Button and Skip Metro Screen.

Everything Apple

Susan Jensen

December 2013

Annie Cumming approached Susan to ask if she was using apps to help people learn new software. As Susan had no idea what Annie was talking about she asked Annie to come to the Everything Apple SIG and show people what they could learn.

Annie is accomplished on her iPad and in a personable manner led the audience into the world of tutorial apps. She also showed us how to find these apps on the Internet. It was a revelation.

Our next meeting is for those lucky souls who are new to iPads or indeed to the Mac, where we will go right back to the basics.

Geneast (Genealogy East)

by Faye Barkla

December 2013

Ron Harper welcomed members to the last Genie meeting of the year, following our convivial Christmas break-up BBQ with the Beast (Beginners East) group.

He would also appreciate any suggestions for topics or speakers to assist with planning the 2014 agenda.

Main Presentation: FreeREG

The final presentation for 2013 was given by Ron on FreeReg (www.freereg.org.uk). FreeReg is a component of the FreeUKGen project (together with FreeBMD and FreeCEN). The FreeREG Project's objective is to provide free Internet searches of baptism, marriage and burial records, which have

been transcribed from English Parish Registers (between 1555-1837, with some registers going later).

Ron's interesting presentation detailed his experiences of being a volunteer transcriber and how that process works. Considerations involved in the transcribing process include: the quality of the original images; the quality of handwriting; the decisions that need to be made in the process; and the sources of error in producing the final transcription.

He also compared FreeReg with Family Search for scope of coverage and information contained in the transcribed record, using his own ancestors in his current assignment of Melbourn, Cambridgeshire, as an example.

Bob's Books

Bob brought in several coffee-table books covering Australia, with a focus on Western Australia among others. He also included "Coast to Coast" with Wainwright (http://en.wikipedia.org/wiki/Coast_to_Coast_Walk).

Brian's Brick Walls & Break Throughs

As no one else had any brick walls or break throughs to speak of, Brian posed a question of his own. His ancestor James Holmes arrived from Ireland in 1892. He married in Melbourne and settled in Carrum. Brian has been unable to

find any records of him from that time. Several people suggested he try the Passenger lists, both ingoing and outgoing. Other suggestions were Rootsweb message boards (<http://boards.rootsweb.com>) and local family history societies such as the Narre Warren & District Family History Group (<http://www.nwdfhg.websyte.com.au>). It was also suggested that he may obtain some clues by tracing the children of the marriage. Any one needing help to solve their brick walls or to offer suggestions can email Brian via Ron Harper (rharper@melbpc.org.au).

Linux & Open Source

by Stephen Tidswell

12 November 2013

James Cox opened the meeting, starting with a Q&A and discussion session.

Q&A

New email system using Outlook – password failure on registering for account.

Simplest approach is to talk to iHelp and ask for the password to be reset.

Has anyone any experience using 7-Zip?

Some – it's a free, open source file-compression utility available for Unix/Linux as well as Mac and Windows. 7-Zip handles archive formats including ZIP, TAR, GZ (used on Unix & Linux systems) and its own 7z format (see <http://www.7-zip.org>).

What are the merits of various Linux distributions – in the context of running a ham radio group? The Group's server currently runs CentOS.

It depends on what applications the group needs. CentOS is a good, very stable distro, which is based on Red Hat Enterprise Linux, and which aims at reliability rather than leading-edge presentation. Application software may therefore not be the latest versions, but that is unlikely to be a problem in a server environment. It's also unlikely that there will be any good reason to change distro unless there's a (very unlikely) need for specialised software that CentOS won't support.

How can a text file be edited to add accents used in the French language?

It depends on the software you're using. You need to access the special characters required either from an external file or from within the application you're using.

One simple method is to use a word processor, where there will be a command something like Insert > Special Character. This will show a list of special characters from which the desired item can be selected, e.g.: ŸΩΓηèéê.

If using a text editor, there may be other ways. Gedit, for example, has a plug-in available for this purpose. See wiki.gnome.org/GeditPlugins and <https://help.gnome.org/users/gedit/stable/gedit-plugin-guide.html.en>.

James installed the package and loaded the Latin character set to demonstrate the process.

Having a problem with email – trying to send SIG email using Outlook – prepared OK but won't send.

Most likely Outlook does not have a full set of account information. Make sure the email account data is complete.

Following on a previous question about unexpectedly high Internet data use...

The problem seems to have been with Linux Mint having been set to check for updates every 15

minutes. Look out for this or similar settings in other distros; it's easy to unintentionally waste a lot of expensive Internet time.

Discussion

The meeting moved on to a discussion of programming languages, in particular Python, which

is a general-purpose high-level programming language (with some similarities to Ruby).

Existing code modules are available on the web in the Python Package Index (PyPI), a repository of more than 37,000 Python software packages (<https://pypi.python.org/pypi>).

Windows 7 & 8

by Kathy Rouse

December 2013

Windows 7

Windows Backup and System Restore

We took a look at using System Restore and the new features in Windows 7 for restoring earlier versions of files and folders.

We also examined the Windows Backup tools for backing up folders and files and/or entire system image. Windows Backup does away with the need for third-party backup software. However, the most important element of any backup software is not how easy it is to use, but how reliable and easy it enables data recovery.

Photos in Windows 7

We looked at the additional tools for organizing and viewing our photos in the Pictures Library.

We also looked at Microsoft's recommended method for sharing our photos by email. I prefer this method, which involves uploading photos to an online photo album and sharing the link with other via an email. This creates very small emails compared to physically attaching photos in the email. It also overcomes problems with size limits and restrictions imposed by many email servers.

Windows 8.1

Colin Everingham gave an excellent presentation on his experience with installing the new Windows 8.1 update on his computers. He also shared some shortcuts and Firefox add-ons he finds particularly useful.

Bringing Back the Windows 7 Style Start Button

Despite all of the hype surrounding Microsoft restoring the Start Button in 8.1, many users were disappointed that it fell short of expectations and did not include the Windows 7 style desktop Start menu that many of us were expecting.

Colin showed us the Start8 software he has installed on his computers: \$US4.99 (with a free trial available) from Stardock <http://www.stardock.com/products/start8>. Start8 is very easy to install, but for those who like to fiddle a bit, there is freeware available called Classic Shell (<http://www.classicshell.net>).

Boot Up To the Desktop Rather Than the Start Screen.

During his presentation, Colin booted directly to the more familiar Desktop rather than the default Start Screen. To set this as the default, right-click on the Desktop's Taskbar – Properties – Navigation tab – check box under the Start screen section.

Upgrade Windows 8.1 with the Windows 8 Product Key

A lot of people seem to be having problems with the Windows 8 to Windows 8.1 upgrade.

Colin outlined the difficulties that he had and provided us with two links that he found invaluable:

Tech Republic site for details on how to get the ISO you need to create your own Windows 8.1 DVD (<http://www.techrepublic.com/blog/>

windows-and-office/get-the-iso-you-need-to-create-your-own-windows-81-dvd/).

Upgrade Windows with only a product key (<http://windows.microsoft.com/en-AU/windows-8/upgrade-product-key-only>).

Finally, Colin showed that he had installed Windows 8.1 on a low-spec Aspire Notebook running Windows 7 Starter 32-bit as, with the original purchase of Windows 8, he was entitled to install the OS on up to three computers.

Mail and Photos in Windows 8.1

We had a look at the new Mail App and Photos App. Both tools are very useful and easy to use. I also like to use the more powerful Windows Live Mail 2012 and Windows Live Photo Gallery 2012. You can download these desktop applications from Windows Live Essentials 2012 (<http://windows.microsoft.com/en-us/windows-live/essentials>).

I have enjoyed running these workshops as everyone has been so enthusiastic and helpful. It has been very rewarding and I have been very thankful and impressed with the way you have helped each other, especially the generous assistance from the more experienced members.

I probably should not admit this, but I have learnt a lot from various members who attended and from having to try to answer some of your questions. I have also had a lot of help from you all when things could have become somewhat chaotic at times.

I sincerely hope that I catch up with some of you in 2014 when I am in town taking a break from my caravan travels.

Regards, Kathy Rouse (Convenor – Windows 7 & 8 SIG)

Yarra Ranges

by John Sapsford

November 2013

A round-up of new equipment:

- A heart monitor watch for \$10.
- A look at Samsung's new ATIV Tablet with Windows 8 installed.
- Six members indicated they had bought an iPad tablet.

There was a discussion about printer ink cartridges and unwanted pop-up advertisements appearing on web browsers.

Our convenor Bryan Paten drew member's attention to the article in the October *Fifty-Plus News* newspaper about the security problems that may arise when Microsoft ceases supporting Windows XP in 2014.

Bryan reported on a seminar he attended called "How to Make Money on the Internet". One business called "Sexy Fragrances" was very successful. We watched a short video called "How the Internet Works"

(<http://www.wimp.com/internetworks>). Another video showed how a hawk moves through trees.

We had a discussion about the Windows Easy Transfer Cable and some members told of their experiences with the "Men's Shed" organization.

There was a discussion about computer maintenance. CCleaner and Synei were two programs mentioned. There was a discussion about the use of a registry cleaner and hard drive defragmentation.

December 2013

Our convener Bryan Paten drew members' attention to the newspaper *Fifty-Plus News* which will cease publication at the end of the year. The Computer Tips featured in the paper may still be found on the Internet at www.greypath.com.

Bryan gave us some useful tips from recent Gizmo emails, including:

- Make drag and drop easier when using a Windows 7 or 8 touchpad (<http://tinyurl.com/gizmodragdrop>).
- Microsoft Research has come up with a sophisticated site that may help you to create better passwords (<https://telepathwords.research.microsoft.com>).

Dave Botherway told us about the very popular Raspberry Pi miniature computer using the Linux Operating System.

Dave then gave us a presentation about some of the new features in the Windows 8 and 8.1 Operating System and reminded everyone that

Windows XP would no longer be supported by Microsoft after April 2014.

Items included in the presentation:

- Dual Booting.
- The Metro interface and Charms bar.
- Switching between Metro and the Desktop.
- No 'Start' button: Classic Shell recommended (<http://www.classicshell.net>).
- How to rearrange, enlarge or delete the tiles in the Metro interface.
- Auto hiding the Taskbar.

After morning tea, discussions topics included:

- Acronis 2014.
- Copying files from one computer to another.
- The dangers of "ransomware", especially CryptoLocker.
- Regular backups to an external hard drive
- Cloud storage.
- Cases for SD cards.
- Putting a file on your USB called "If Found" with your contact details such as mobile phone number.

Everything Apple

Convener:
Susan Jensen (03) 9885 7060
Assistant Convener:
Damian Vuleta (03) 9509 9992
E-mail to: applesig@melbpc.org.au or
everything-apple@ausom.net.au

This is a joint venture between Melb PC and AUSOM. The emphasis will be on Apple iDevices (iPod, iPhone, iPad, AppleTV, Time Capsule, Airport Extreme) and helping people understand the Mac environment.

Next Meeting: 11th February

2:00 pm

Back to iPad Basics

Presented by Susan Jensen

Our next meeting is for those lucky souls who are new to iPads or indeed to the Mac when we will go right back to the basics and show you how to set up an iPad and can answer your questions on working with a Mac.

Come along to Melbourne PC HQ on 11th February at 2:00 pm and be amazed.

There will be a 15-minute break for tea and coffee, and time for questions afterwards.

**Second Tuesdays (except January),
2:00 pm–4:00 pm
Melbourne PC Headquarters,
Level 1, 479 Warrigal Rd, Moorabbin**



Purple headings are special interest groups.

Blue headings are special interest groups at Melb PC Headquarters, Moorabbin.

Green headings are local/general groups.

Red indicates a recent change.

Details of the interest groups are also available at: <http://groups.melbpc.org.au>

ACCESS (DATABASE) AND EXCEL

access@melbpc.org.au

<http://groups.melbpc.org.au/~access/>

Convener Craig Evans Craig_Evans@racv.com.au
Date Second Monday of each month
(except January)
Time 6.30pm-8.30pm
Venue Melb PC Headquarters
Level 1, 479 Warrigal Rd, Moorabbin

ADOBE VIDEO

Not running in 2014

ANYWHERE, ANY-TIME (NEWSGROUPS)

See **ONLINE SIG**

BALLARAT

ballarat@melbpc.org.au

Convener Alan Pittard 5339 4235
Date First Thursday of each month
Time 7.30pm-9.45pm
Venue Midlands Golf Club Heinz Lane Ballarat

BAYSIDE

bayside@melbpc.org.au

<http://groups.melbpc.org.au/~bayside/>

Convener John Morris 9583 4095
Graham Ackland 9589 6229
Date Third Thursday of each month
Time 10am-12 noon main meeting
12 noon-1pm beginners' subgroup
Venue St Stephens Church Hall, Cnr Cochrane
Street and North Road Brighton.

CASEY

casey@melbpc.org.au

<http://groups.melbpc.org.au/~casey/>

Convener Jan Whitaker 9705 9009
Jan Weiner 9560 6924
Date Second Friday each month
(except January)
Time 12.30pm-3pm
Venue Narre Warren Library (Fountain Gate)
Overland Drive Narre Warren 3805
9704 7696 Melway: Map 110 Ref D4

CASEY WORKSHOP

Convener Jan Weiner 9560 6924
Jan Whitaker 9705 9009
Date Fourth Friday of each month
(except 22 April)
Time 12.30-3pm
Venue Narre Warren Library (Fountain Gate)
Overland Drive Narre Warren 3805
9704 7696 Melway: Map 110 Ref D4

COMMUNICATIONS

comms@melbpc.org.au

Convener Philip Lew 9822 2998 (BH)
Date Second Wednesday of each month
(except January)
Time 7pm-9.30pm
Venue Melb PC Headquarters
Level 1, 479 Warrigal Rd, Moorabbin

DIGITAL PHOTOGRAPHY

Convener Ian Bock 9807 3701
bockey@melbpc.org.au
Date Third Friday of each month
(except December)
Time 10am-12noon
Venue Wadham House 52 Wadham Parade
Mount Waverley Melway 61 E12

GROUP DETAILS

E-BOOK

ebook@melbpc.org.au

Convener Dennis Fieldhouse 9557 6847
John Swale 0417 530 766
Date Second Thursday of each month
(except January)
Time 7pm
Venue Melb PC Headquarters
Level 1, 479 Warrigal Rd, Moorabbin

EAST

east@melbpc.org.au

<http://groups.melbpc.org.au/~east>

Convener Paul Woolard 9877 1059
Ian Dewhurst 0438 480 500
Date Second Wednesday of each month
(except January)
Time 7.30pm-10pm
Venue Vermont South Community House
Karobran Drive Vermont South
Melway 62 G7

BEAST (BEGINNERS EAST)

beast@melbpc.org.au

Convener Dave Botherway
Date Third Sunday (February to November)
Second Sunday in December (no January
meeting).
Time 10am-12.30pm
Venue Vermont South Community Centre
Karobran Drive Vermont South
Melway 62 G7

GENEAST (GENEALOGY EAST)

geneast@melbpc.org.au

Convener Ron Harper rharper@melbpc.org.au
Date Third Sunday (February to November)
Second Sunday in December (no January
meeting).
Time 1pm-3.30pm
Venue Vermont South Community Centre
Karobran Drive Vermont South M:62 G7

EAST WORKSHOP

eastwsh@melbpc.org.au

<http://groups.melbpc.org.au/~eastwsh>

Convener Ken Gubbins 9842 8875
Jeff Webster 9078 0879
Date Second Sunday
Time 10am-2pm
Venue Wadham House 52 Wadham Parade
Mt Waverley rear of Library. Melway 61 E12.

ESSENDON

essendon@melbpc.org.au

<http://groups.melbpc.org.au/~essendon>

Convener John Guegan 9317 7114
Date First, second, and third Friday
Time 9:30am-12 noon
Date Fourth Wednesday (except January)
Time 7pm-9pm
Venue Nancye Kirchner Neighbourhood Centre,
Doyle Street Avondale Heights
Melway 27 D6

First Friday: Main meeting. Second Friday: Open Forum.
Fourth Friday: Varies (check website for details). Fourth
Wednesday Night: Multimedia/General.

EVERYTHING APPLE

everything-apple@ausom.net.au

Convener Susan Jensen 9885 7060
Damian Vuleta 9509 9992
Date Second Tuesday each month (except Jan)
Time 2pm-4pm
Venue Melb PC Headquarters
Level 1, 479 Warrigal Rd, Moorabbin

EVERYTHING IPAD

everything-ipad@ausom.net.au

Convener Dick Johnson 9857 7362
Date Third Wednesday (except January)
Time 2pm-4pm
Venue Melb PC Headquarters
Level 1, 479 Warrigal Rd, Moorabbin

GRAPHICS/ANIMATION

graphics@melbpc.org.au

<http://groups.melbpc.org.au/~graphics>

Convener Yahya Abdal-Aziz
Roger Wragg rdwragg@fastmail.fm
Date Third Monday of each month
Time 7.30pm-9.30pm
Venue Melb PC Headquarters
Level 1, 479 Warrigal Rd, Moorabbin

HARDWARE

Convener Kelvin Cording 9438 1047
kcording@bigpond.net.au
Bill Dair 9802 4242
wedair@melbpc.org.au
Date Second Friday (except January)
Time 10am-12 noon
Venue Wadham House 52 Wadham Parade
Mount Waverley Melway 61 E12.

IHELP

ihelp@melbpc.org.au

<http://groups.melbpc.org.au/~ihelp>

Convener Rotational
(check with office for current details)
Date Approximately 6 monthly
Time 7-9pm
Venue Melb PC Headquarters
Level 1, 479 Warrigal Rd, Moorabbin

LAN-SLIDE GAMING

<http://www.lanslide.com.au>

<http://www.facebook.com/groups/lanslide>

Convener Brendon Taylor, Craig Mattson
Date (TBA)
Time 26-hour gaming event
10am Saturday until 12pm Sunday
Venue Melb PC Headquarters
Level 1, 479 Warrigal Rd, Moorabbin

LINUX AND OPEN SOURCE

linux@melbpc.org.au

<http://member.melbpc.org.au/~linux>

Convener James Cox 9885 5503
Date Second Tuesday (except Jan)
Time 7pm-9.30pm
Venue Melb PC Headquarters
Level 1, 479 Warrigal Rd, Moorabbin

LINUX AND OPEN SOURCE WORKSHOP

linux@melbpc.org.au

<http://member.melbpc.org.au/~linux>

Convener James Cox 9885 5503
Date Second Tuesday (except Jan)
Time 4pm-7pm
Venue Melb PC Headquarters
Level 1, 479 Warrigal Rd, Moorabbin

MACE (MELBOURNE ATARI COMPUTER ENTHUSIASTS)

mace@melbpc.org.au

Convener Andrew Boschan 5426 1917 AH
Date Third Sunday of each month
Time 10am-2pm
Venue Melb PC Headquarters
Level 1, 479 Warrigal Rd, Moorabbin

MACEDON RANGES

mrgpc@melbpc.org.au

Convener John Hunter 0406 868 226
Date Third Sunday of each month
Time 2-4pm
Venue Further Education Centre
18 Hamilton St Gisborne

MAKING MONEY ON THE INTERNET

amsig@melbpc.org.au

<http://groups.melbpc.org.au/~amsig>

Convener George Skarbek 9561 6362
Paul Hemsworth 9337 4947
Date Second Saturday of each month
(except December and January)
Time 10am-12 noon
Venue Melb PC Headquarters
Level 1, 479 Warrigal Rd, Moorabbin

MICROCONTROLLER

micro@melbpc.org.au

Date Second Wednesday (except January)
Time 7pm-9.30pm
Venue Melb PC Headquarters
Level 1, 479 Warrigal Rd, Moorabbin

MICROCONTROLLER WORKSHOP

microws@melbpc.org.au

Date Second Saturday (except Jan)
Fourth Saturday (except December)
Time 12noon-5pm
Venue Melb PC Headquarters
Level 1, 479 Warrigal Rd, Moorabbin

MORNINGTON PENINSULA

pennsula@melbpc.org.au

<http://groups.melbpc.org.au/~pennsula>

Convener (interim) Lindsay Wiles 9775 3069
lwiles@westnet.com.au
(interim) Ian Thomson
iaroth@netspace.net.au
(interim) Colin Ackehurst
colin_a_ackehurst@bigpond.com
Date Third Monday of each month (except Dec)
Time 9.30am Day Meeting
12.30pm Graphics Workshop
2.30pm Genealogy
Venue Mornington Information Centre
320 Main St Mornington

MORNINGTON PENINSULA GRAPHICS WORKSHOP

pennsula@melbpc.org.au

<http://groups.melbpc.org.au/~pennsula>

Date Third Monday of each month (except Dec)
Time 12.30pm
Venue Mornington Information Centre
320 Main St Mornington

MORNINGTON PENINSULA GENEALOGY

pennsula@melbpc.org.au

<http://groups.melbpc.org.au/~pennsula>

Date Third Monday of each month (except Dec)
Time 2.30pm
Venue Mornington Information Centre
320 Main St Mornington

MULTIMEDIA

multimed@melbpc.org

<http://www.melbpc.org>

Convener John Hall 9803 2731
johnhall@melbpc.org.au
Kelvin Cording 9438 1047
kcording@bigpond.net.au

Date First Friday of each month
(except January)
Time 10am-12 noon
Venue Wadham House 52 Wadham Parade
Mount Waverley Melway 61 E12.

MUSIC

music@melbpc.org.au

<http://groups.melbpc.org.au/~music>

Convener Yahya Abdal-Aziz, David Godfred
Date Third Thursday of each month
Time 7.30pm-9.30pm
Venue Melb PC Headquarters
Level 1, 479 Warrigal Rd, Moorabbin

NEWSGROUPS

See **ONLINE SIG**

NORTH EAST

neast@melbpc.org.au

<http://groups.melbpc.org.au/~neast>

Convener Lynnette Hammet
lynnhammet@netspace.net.au; Choi Lai
Date Fourth Tuesday of each month
(except December)
Time 7.30pm-9.30pm
Venue Uniting Church Hall 19 Seddon Street
Ivanhoe, parking at the rear, Melway 31 F8

NORTH EAST DAYTIME

neday@melbpc.org.au

Convener Colin Lampshire 9857 5372
or 0413 640 408 lampshir@melbpc.org.au
Date Second Thursday of every month
(except January)
Time 10am-12.15pm
Venue Uniting Church Hall 19 Seddon Street
Ivanhoe, parking at the rear, Melway 31 F8.

Every alternate month we specialise in issues relating to
Photography/Digital Imaging.

NORTH EAST ANDROID

Convener Colin Lampshire 9857 5372
or 0413 640 408 lampshir@melbpc.org.au
Kelvin Cording 9438 1047
Date Third Wednesday of each month
(except January)
Time 10am to 12 noon
Venue Uniting Church Hall 19 Seddon Street
Ivanhoe, parking at the rear, Melway 31 F8.

NORTH EAST GENEALOGY

negen@melbpc.org.au

<http://member.melbpc.org.au/~negen/>

Convener Allan Medforth 9410 9034
Vilma Stargatt
Date First Tuesday of each month
(except January)
Time 10am-12.45pm
Venue Uniting Church Hall 19 Seddon Street
Ivanhoe, parking at the rear, Melway 31 F8.

NORTH EAST PHOTOGRAPHY/DIGITAL IMAGING

neday@melbpc.org.au

Convener Colin Lampshire 9857 5372
or 0413 640 408 lampshir@melbpc.org.au
Date Second Thursday of every second month
(except January)
Time 10am-12.15pm
Venue Uniting Church Hall 19 Seddon Street
Ivanhoe, parking at the rear, Melway 31 F8

NORTHERN SUBURBS LINUX

nslig@melbpc.org.au

<http://groups.melbpc.org.au/~nslig>

Convener David Hatton, Stephen Davidson
Date Third Monday of each month
(except December)
Time 7.30pm to 9.30pm
Venue Community Meeting Room Watsonia
Library, Ibbotson St Watsonia Melway 20 E4.

ONLINE SIG (WAS ANYWHERE, ANY-TIME – NEWSGROUPS)

anywhere@melbpc.org.au

<http://groups.melbpc.org.au/~anywhere/>

Convener Kevin Martin (evening only)
5964 7627 or 0407 343 162
Time 24/7
Venue Melb PC Newsgroups and Forum
The Online SIG provides a 24-hour, 7-day-a-week and
always-easily-accessed place for all members of the
Melb PC User Group to read and write comments, to ask
questions on computing or non-computing topics, to
receive replies from other members, and to read their
exchanges between each other."

PROGRAMMING

program@melbpc.org.au

Convener Mohan Gupta 0421 214 081
Roger Plant 0403 789 593
Date Fourth Tuesday of each month
Time 6.30pm-9pm.
Venue Melb PC Headquarters
Level 1, 479 Warrigal Rd, Moorabbin

RASPBERRY PI

Convener John Hall 9803 2731
johnhall@melbpc.org.au
Lance Lloyd 9884 5559
lance.melbpc@fastmail.fm
Date Fourth Friday of the month
(except December)
Time 10am-12noon
Venue Wadham House, 52 Wadham Pde
Mount Waverly, Melway 61 E12

SONY VIDEO PRODUCTION

Convener Roger Wragg rdwragg@fastmail.fm
Bob Flack
Date Second Wednesday of the month
Time 10am-12 noon
Venue Melb PC Headquarters
Level 1, 479 Warrigal Rd, Moorabbin

SUNBURY

sunbury@melbpc.org.au

<http://groups.melbpc.org.au/~sunbury>

Convener Kevin Day 9744 2514
Kevin Hale 9740 5786
Date Every Thursday
Time 9.30am-12 noon
Date First Thursday:
New users, but everyone welcome
Second Thursday:
Maintenance, problems discussed, some-
times solved
Third Thursday:
Main meeting, demos, presentations etc.
Fourth Thursday:
Linux, a new experience
Fifth Thursday (when there is one):
Maintenance
Venue Sunbury Senior Citizens Centre (back room)
8 O'Shannassy Street Sunbury Melway 382 E4.

SUNBURY: NEW USERS, MAINTENANCE, LINUX

sunbury@melbpc.org.au

<http://groups.melbpc.org.au/~sunbury>

Convener Kevin Day 9744 2514
Kevin Hale 9740 5786

Date Every Thursday

Time 9.30am-12 noon

Date First Thursday: New users, but everyone welcome
Second Thursday: Maintenance, problems
Third Thursday: Main meeting, demos, presentations etc.
Fourth Thursday: Linux, a new experience
Fifth Thursday (when there is one): Maintenance

Venue Sunbury Senior Citizens Centre (back room)
8 O'Shannassy Street Sunbury Melway 382 E4.

VIDEO INNER EAST

<http://users.tpg.com.au/adslo8nb/vie/index.html>

Convener Richard Balsillie 9809 4116

Date Fourth Monday of each month
(except December)

Time 7pm-9.30pm

Venue Balwyn Library Meeting Room
336 Whitehorse Road Balwyn.

WASINT (WEB AND SOFTWARE INVESTMENT TOOLS)

wasint@melbpc.org.au

<http://groups.melbpc.org.au/~wasint>

Convener Richard Solly

Date Second Tuesday (except January)

Time 10.30am-12.30pm

Venue Melb PC Headquarters
Level 1, 479 Warrigal Rd, Moorabbin

WEBSITE DESIGN

webdesign@melbpc.org.au

<http://groups.melbpc.org.au/~webdesign>

Convener Fleur Stephens 0407 330 963

Date Fourth Sunday
(except December and January)

Time 2pm-4pm

Venue Melb PC Headquarters
Level 1, 479 Warrigal Rd, Moorabbin

WINDOWS 7&8

Convener Jan Weiner (SIG Coordinator) 9560 6924

Date Third Saturday of each month
(except January)

Time Windows 7 10am-12pm
Windows 8 1pm-3pm

Venue Melb PC Headquarters
Level 1, 479 Warrigal Rd, Moorabbin

WYNDHAM

wynd@melbpc.org.au

<http://groups.melbpc.org.au/~wynd>

Convener Chris Hughes 9731 0891, John Healey

Venue Room 3 Central Park Community Centre
Lonsdale Circuit off Franklin Blvd.
Hoppers Crossing. Melway 206 J-1.

Date Third Tuesday of each month
(except December and January)

Time 7.30pm-9.30pm

WYNDHAM MULTIMEDIA

wynd@melbpc.org.au

<http://groups.melbpc.org.au/~wynd>

Convener Chris Hughes 9731 0891, John Healey

Date Second Monday of each month
(except January)

Time 7.30pm-9.30pm

Venue Room 3 Central Park Community Centre
Lonsdale Circuit off Franklin Blvd.
Hoppers Crossing. Melway 206 J-1.

YARRA RANGES

yrig@melbpc.org.au

<http://groups.melbpc.org.au/~yrig>

Convener Bryan Paten 0429 430 640
Shane Mason 9733 5390

Date Fourth Tuesday (except December)

Time 9.15am (followed by the Workshop)

Venue Japara Community House
13 Leith Road Montrose Melway 52 D7

YARRA RANGES WORKSHOP

yrig@melbpc.org.au

<http://groups.melbpc.org.au/~yrig>

Convener Bryan Paten 0429 430 640
Shane Mason 9733 5390

Date Fourth Tuesday (except December)

Time After the 9.15am main meeting

Venue Japara Community House
13 Leith Road Montrose Melway 52 D7

Melb PC Needs More Volunteers

To maintain and to enhance our services to members, we require more help. Here are two areas for your consideration this month where assistance is urgently needed:

Help with membership and marketing

We are forming a group of members who will develop a “buddy” system and a welcome pack for new members, and will plan a follow-up program to contact members who have joined in the recent past (back to 2012) to ensure they have settled in to the club, or see if buddies are required. This group would work with Lance Lloyd (chair of the Memberships and Marketing Sub-Committee).

We want to help all members to benefit from club activities, and spread the word. Volunteers are invited to assist with preparing articles from meeting speakers for publication in *PC Update*.

We need to conduct a members’ survey to help plan new directions for the club. The task for a volunteer would be to develop the survey (using a tool such as Survey Monkey) with questions agreed to by the Committee.

Contact: Lance Lloyd lance.melbpc@fastmail.fm

Help with developing new training programs

Melb PC is investigating the options for training members in an area of their interest, to be part of a new training program at our Moorabbin HQ (with a possibility of other locations if there is sufficient interest).

The program needs members familiar with even just one area among these:

- operating systems
- laptops
- tablets
- smartphones
- digital cameras
- video/audio
- eBooks
- partitioning
- accessories
- printing
- recording

The commitment would be of a few hours a week while we get the program off the ground.

Contact: Jan Weiner weijan@westnet.com.au

INTERNET HELP (iHELP)

For members needing assistance, iHelp is a group of “Users helping Users.” Their main role is to sort out Internet or general PC problems. Assistance can be obtained in various ways depending on your connectivity and convenience.

For help in setting up your new Melb PC email account, please read the notice on [page 46](#).

Phone First Aid

This is a telephone support number for simple and urgent problems: call (03) 9276 4088, Monday to Friday between 10am and 3pm.

Outside these hours, or if iHelpers are not available, just leave a message on that number (including your membership details), and it will be passed onto the iHelp team.

If the problem cannot be resolved within 15 minutes it is generally referred to Internet Help, where an appropriate iHelper will follow up the inquiry.

Email Help

For those who cannot access our web pages but can send an email, a request for help with membership details can be sent to help@melbpc.org.au. It is then logged to Internet Help where an appropriate iHelper will follow-up the inquiry.

Internet Help (iHelp)

The main iHelp system for Melb PC members is accessed from the [Internet Services Page](#) on the Melb PC website under the link titled “Internet Help”, which goes to <http://ihelp.melbpc.org.au/helpdesk/iuser/index.asp>.

After entering your Membership Number and First Name, you are able to “Log a Service Request”, with details of your problem.

When an appropriate iHelper is available, they will contact you at your registered phone number or email address, which should therefore be kept up-to-date at the office.

All efforts will be made to ensure someone replying to your request is familiar with the issue, however if the problem cannot be solved to your satisfaction, you may wish to refer to other Group resources as detailed below.

OTHER WAYS TO GET HELP

FAQs

On the [Internet Services Page](#) there is a link to Frequently Asked Questions (FAQs) on using the Melb PC Internet Service. In many cases a solution will have already been documented.

Online SIG (Newsgroups)

For those familiar with using newsgroups, we suggest that you subscribe to [melbpc.connectivity](#), [melbpc.computing.misc](#), or [melbpc.general](#).

Alternatively, you can access the messages via an online web-based forum, via the [Internet Services Page](#). See the following page for more details.

SIG Meetings

Most SIGs hold monthly meetings in locations

around Melbourne. These provide the opportunity for one-on-one discussion with knowledgeable local members. Details of SIGs can be found in *PC Update*, or from the [Internet Services Page](#) from the top link titled “Interest Group Pages.”

SIG Workshops

Some SIGs hold monthly workshops, in locations around Melbourne. These provide the opportunity for hands-on assistance with your PC from local knowledgeable members.

Details of SIG workshops can be found in *PC Update*, or from the [Internet Services Page](#) from the top link titled “Interest Group Pages.”

Please contact the Convener at least 24 hours before attending so they can research the problem,

and bring to the meeting any hardware or software that might be needed.

Monthly Meeting Q&A

At the Moorabbin Monthly General Meeting, besides interaction with other members, there is always a Q&A session hosted by one of the Group's computer experts. If you have a straightforward question, this is often a good place to get a precise answer with additional feedback from the audience.

Dial Help

The Dial Help service is described here:

<http://www.melbpc.org.au/help>.

If your problem relates to one of the listed

categories, the relevant volunteer may be telephoned for specific advice. Calls can be made between 9am to 5pm and 6.30pm to 9pm.

Please keep all calls short, particularly during business hours, and don't expect a volunteer to call you back on a mobile phone number.

Home Visit Assist

This service is only for members who are restricted in their activities or mobility. This generally means those with an Age or Disability Pension.

The contact for Home Visit Assist is the Office Phone: (03) 9276 4000, or by email to:

office@melbpc.org.au.

NEWSGROUPS VIA ONLINE WEB-BASED FORUM

Accessing the forum is a two-step process. The first step gains read-only access using your Melb PC credentials. i.e. username and password as for email or Webmail. e.g. fdagg *****

The second step, to enable posting of messages, requires a separate forum username and password i.e. you need to join the forum. Currently the only way to do this is to post a message in one of the newsgroups (use melbpc.general) using a news client such as Thunderbird. A forum membership is then automatically generated based on the name and email address used.

e.g. Fred Dagg fdagg@melbpc.org.au

This can be done on a member's behalf by sending an email to anywhere@melbpc.org.au detailing the name and email address you wish to use. Please use your real name as we're a friendly bunch, and note that the newsgroups are private and only accessible by fellow Melb PC members. You don't have to use your Melb PC email address.

Once the forum membership has been created you will receive an auto-generated email to confirm you really do want to join. Confirm and then use the forum's "forgotten password" link to generate a new password. This is all handled between the forum software and the user nominated email account so no-one else has access to the password.

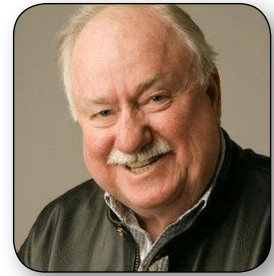
Please note that using the forum for posting newsgroup messages is still somewhat experimental, but does work quite well.



PRESIDENT

Harry Lewis

president@melbpc.org.au



VICE-PRESIDENT

Charles Wright

vicepresident@melbpc.org.au



committee@melbpc.org.au



TREASURER

Geoffrey Keenan

treasurer@melbpc.org.au



SECRETARY

Ian Rankin

secretary@melbpc.org.au



MEMBER

Norman Elliman

normane166@gmail.com



MEMBER

Phil Lew

phil@melbpc.org.au



MEMBER

Lance Lloyd

lance.melbpc@fastmail.fm



MEMBER

Don McKenzie

dimck@solemate.com.au



MEMBER

Roger Wragg

rdwragg@fastmail.fm

Melbourne PC User Group Committee 2013-2014

The overall responsibility for Melb PC business lies with the Committee (except for matters reserved to general meetings). Our rules and Committee decisions have identified specific responsibilities as follows. Members wishing to discuss any of these matters are invited to contact the responsible person from this list, and on any other matter to contact the President or the Secretary.

President	Harry Lewis	president@melbpc.org.au
Vice-President	Charles Wright	vicepresident@melbpc.org.au
Secretary	Ian Rankin	secretary@melbpc.org.au
Treasurer	Geoffrey Keenan	treasurer@melbpc.org.au
Buildings and facilities	Roger Wragg	rdwragg@fastmail.fm
Email upgrade	President	
Internet management committee	President	
Librarian	Yahya Abdal-Aziz	yahyaAA1@hotmail.com
Membership and marketing	Lance Lloyd	lance.melbpc@fastmail.fm
Monthly meetings		
Finding speakers	President	
Hosting	Stewart Gruneklee	stewartg@melbpc.org.au
PC Update	Vice-President	
	Lance Lloyd	lance.melbpc@fastmail.fm
SIG Co-ordinator	Norman Elliman	normane166@gmail.com
Website development	President	
Content	Vice-President	
Technical development	Craig Mattson	craig@craigmattson.net

Note: all the above are members of the Committee 2013-2014 except for Yaha Abdal-Aziz, Craig Mattson and Stewart Gruneklee.



ABN 43 196 519 351
(Victorian Association Registration No. A0003293V)
Unit 26, 479 Warrigal Road, Moorabbin VIC 3189
Telephone: (03) 9276 4000
Email: office@melbpc.org.au
Web: www.melbpc.org.au

Subscription for Monthly Disc

Name		Membership Number	
Address		Current Contact Email Address	
Suburb	Post Code	Phone	

For	Feb	Mar	Apr	May	Jun	Jul	Aug	Sep	Oct	Nov	Dec	Total	\$	
Month												Amount		

Price: \$3.00 per disc if you collect it from the office or purchase at the monthly meeting.

Add an Extra \$1.00 postage and handling if we mail your order.

Price for a yearly subscription is \$44.00 inc mailing to your home address.

Payment Details

Name on Card	Expiry Date on card	Signature	Date
			/ /



"Members helping Members"

NEW MOBILE 3G/4G BROADBAND PLANS

3G MOBILE DATA PLANS

2GB	4GB	6GB	8GB	10GB	15GB
\$20 PER MONTH	\$30 PER MONTH	\$35 PER MONTH	\$40 PER MONTH	\$45 PER MONTH	\$55 PER MONTH
First month in advance (\$40), thereafter \$20 on a direct debit on credit card for 12 months. Total spend \$240.00	First month in advance (\$60), thereafter \$30 on a direct debit on credit card for 12 months. Total spend \$360.00	First month in advance (\$70), thereafter \$35 on a direct debit on credit card for 12 months. Total spend \$420.00	First month in advance (\$80), thereafter \$40 on a direct debit on credit card for 12 months. Total spend \$480.00	First month in advance (\$90), thereafter \$45 on a direct debit on credit card for 12 months. Total spend \$540.00	First month in advance (\$110), thereafter \$55 on a direct debit on credit card for 12 months. Total spend \$660.00
DEVICE INCLUDED	DEVICE INCLUDED	DEVICE INCLUDED	DEVICE INCLUDED	DEVICE INCLUDED	DEVICE INCLUDED
EXCESS DATA USAGE COSTS \$7.50 PER 1GB OR PART THEREOF.	EXCESS DATA USAGE COSTS \$7.50 PER 1GB OR PART THEREOF.	EXCESS DATA USAGE COSTS \$7.50 PER 1GB OR PART THEREOF.	EXCESS DATA USAGE COSTS \$7.50 PER 1GB OR PART THEREOF.	EXCESS DATA USAGE COSTS \$7.50 PER 1GB OR PART THEREOF.	EXCESS DATA USAGE COSTS \$7.50 PER 1GB OR PART THEREOF.

☐ **2GB \$210 upfront for 12 month contract = \$17.50 PER MONTH**
EXCESS DATA USAGE COSTS \$7.50 PER 1GB OR PART THEREOF. Total spend is \$210.00.

4G MOBILE DATA PLANS (3 to 4 times faster downloads than 3G)

3GB = \$30	6GB = \$40	9GB = \$50	12GB = \$60
PER MONTH	PER MONTH	PER MONTH	PER MONTH
\$30 on a direct debit on credit card for 12 months. Total spend \$360.00	\$40 on a direct debit on credit card for 12 months. Total spend \$480.00	\$50 on a direct debit on credit card for 12 months. Total spend \$600.00	\$60 on a direct debit on credit card for 12 months. Total spend \$720.00
EXCESS DATA USAGE COSTS \$7.50 PER 1GB OR PART THEREOF.	EXCESS DATA USAGE COSTS \$7.50 PER 1GB OR PART THEREOF.	EXCESS DATA USAGE COSTS \$7.50 PER 1GB OR PART THEREOF.	EXCESS DATA USAGE COSTS \$7.50 PER 1GB OR PART THEREOF.

4G mobile devices: ☐ USB modem \$120.00 ☐ Wireless Modem \$170.00

☐ **2GB \$265 upfront for 12 month contract on 4G plan = \$22.00 PER MONTH**
MODEM/S NOT INCLUDED EXCESS DATA USAGE COSTS \$7.50 PER 1GB OR PART THEREOF. Total spend is \$265.00.

BYO PHONE VOICE and DATA on a 4G PLAN

\$35 MONTHLY SIM only plan on 4G network,
(\$420.00 total spend for 12 months, pay monthly)

- Standard calls to friends and family within Australia^ ● \$500 of included value ● 1GB of data

Just bring your own phone and get connected on the Optus network.

Pricing Information: The cost of a two minute standard national voice call is \$2.36. The cost of sending a standard national TXT is 30c. Additional data in Australia is 10c/MB (Charge per kB). ^Includes standard national & international voice & video calls & TXT & PXT; voicemail; calls to 1223, 1225, 13, 15 & 18 numbers; & re-routed calls.

Application form and terms and conditions available from the office or on the Melb PC website.

- ⇒ Already have Broadband through Melb PC?
Plans are interchangeable up or down within the 12 month contract—If you are on dial-up with us you will be given a credit towards your new plan on broadband.
- ⇒ Call the office to discuss a change of plan on 03 9276 4000

*** PLEASE ENSURE YOU READ TERMS AND CONDITIONS LOCATED ON THE REVERSE OF THE APPLICATION FOR MOBILE BROADBAND FORM. YOU ARE REQUIRED TO SIGN THE TERMS AND CONDITIONS INDICATING YOU HAVE READ AND UNDERSTOOD THEM.**

*Melb PC Dialup and Mobile Broadband Internet Terms and Conditions

A. Definitions

"Melb PC" means Melbourne PC User Group incorporated or its assignee:

"Member" means a financial member of Melbourne PC User Group and includes:

- a) "Full Member" A person accepted into the Group after payment of the current full membership fee, or the related Student or Pensioner concession fee.
- b) "Family Member" A domiciled spouse, partner, child or relative of a full member accepted to participate in activities of the Group and use that Member's Internet account after payment of the Family Membership fee: the subscriber" means the MelbPC full member who has accepted the Melb PC Internet Agreement and paid fees for the subscription period and includes both Full and Email account subscribers. (see Level of Description); "subscription periods" means the period in advance for which the subscriber has paid in full being one of the periods of subscription offered by Melb PC from time to time.

B. Subscription type & Details.

Subscription Type	Annual Fee or Monthly Fee	email & Newsgroup Storage or Mail Quota (Limit)	Browsing	Time Limit	Home Page Storage	Download Limit	When Limit Reached
3G Mobile Broadband 2GB 3G Mobile Broadband 4GB 3G Mobile Broadband 6GB 3G Mobile Broadband 8GB 3G Mobile Broadband 10GB 3G Mobile Broadband 15GB	\$210pa or \$20 pcm \$30 pcm \$35 pcm \$40 pcm \$45 pcm \$55 pcm		Yes			2GB pcm 4GB pcm 6GB pcm 8GB pcm 10GB pcm 15GB pcm	Excess data usage on all plans costs \$7.50 per 1GB or part thereof
4G Mobile Broadband 3GB 4G Mobile Broadband 6GB 4G Mobile Broadband 9GB 4G Mobile Broadband 12GB	\$30 pcm \$40 pcm \$50 pcm \$60 pcm		Yes			3GB pcm 6GB pcm 9GB pcm 12GB pcm	Excess data usage on all plans costs \$7.50 per 1GB or part thereof
4G Voice and Data Plan	\$35 pcm		Yes			1GB pcm	Excess data usage on all plans costs \$7.50 per 1GB or part thereof
Email account	\$0	10 MB	nil		Nil	nil	Rejected
ADSL Coming Soon	NA						

The above charges and details are subject to change from time to time. Limits and Time Quota: daily (non-cumulative) plus bonus time in non-peak periods.

Email Account Subscriber (available to all Melb PC Members without charge)

C. Description of Service(s)

General:

Melbourne PC User Group Inc. A0003293V (Melb PC) Internet Service network (the Network) is a service owned and operated by Melb PC for its members. It is a subscriber-funded service administered by the Internet Management Subcommittee (the subcommittee).

Function of the Melb PC Network: The primary function of the Network is to support the transfer of information to and from Melb PC members and the International community, subject to the terms of this agreement.

Access Software: The subscriber will need to acquire suitable mail, news and Web software from our shareware library or other resources. However, Melb PC makes available a configuration kit that automates this process for those who require it.

Accounts: Accounts are issued only to individuals, not company names; Melb PC may reject an application without stating a reason.

Support: Volunteers offer their help in local newsgroups and via an Internet Help team with interaction through Web Boards, e-mail and direct telephone support.

Duration: The subscription to the Network is for one year from the date of acceptance. It automatically terminates upon expiry of membership of MelbPC if that occurs earlier.

Acknowledgment: Successful applicants will include individuals whose forms are correctly filled out and whose funds have been transferred to the Melb PC Bank account.

Net Etiquette: Melb PC endorses adherence to ("Net etiquette" or "Netiquette") as deemed by the subcommittee from time to time and to prevailing International standards widely accepted as suitable behavior for using the Internet.

D. Terms of Agreement

1. The subscriber asks Melb PC to provide a level of Internet access and Melb PC agrees to do so.
2. This agreement starts when an authorized officer of Melb PC has executed it and Melb PC has received a cleared payment for the subscription period.
3. If the subscriber renews this agreement for a further subscription period, this agreement applies to the renewed subscription period unless the parties agree otherwise in writing.
4. The subscriber acknowledges that:
 - a. Continuity and speed of the Internet access depends on a wide range of factors many of which are beyond the control of Melb PC.
 - b. Melb PC has no control over the accuracy of appropriateness of any information on the internet.
 - c. Melb PC is not responsible for any material available on the Internet.
 - d. The subscriber's Internet access may be interrupted by equipment failure, the need for routine maintenance peak demand and so on.
 - e. Melb PC cannot guarantee that the subscriber will be able to secure access at any given time or that fluctuations in demand by other subscribers will not prevent the subscriber from using the full amount of the maximum daily time allowance on any given day.
 - f. Melb PC cannot guarantee that subscriber's home pages will always be available.
 - g. Dial up and Mobile Broadband Internet Subscribers are responsible for writing and uploading their own home pages and keeping backup copies of same. Melb PC does not back up these home pages. Subscribers will need to reload their own home pages in the event that the Melb PC facilities suffer any data loss.
 - h. The right to publish and communicate using home pages is granted to full Internet subscribers in the spirit of user group activities of sharing and furthering the computing experience. The quality of the Melb PC Internet service will be protected by Melb PC reserving its right to suspend the access to any publications of a subscriber who generates a disproportionate amount of Internet traffic. Subject to matters of the kind referred to in the previous clause and to the subscriber's access limits, Melb PC will use its best endeavors to keep Internet access available continuously and to allow the subscriber to have access for the current daily time allowance as set from time to time.
5. The subscriber will indemnify Melb PC against any liability, claim, action, suit, demand, loss, cost or expense arising out of or in any way connected with this agreement or Internet access, including without limitation any negligence by Melb PC, its servants or agents.
6. The subscriber will pay fees according to Melb PC's standard pricing list from time to time, and a copy of the list certified by an officer of Melb PC is conclusive evidence of the prices applicable at any time.
7. Any notice given about any matter concerning this agreement may be given by clicking an accept button following the display of the agreement on a web page, by fax, e-mail or post at the last fax number email or postal address notified to the sender and is deemed to have been received at the time when it would have arrived in the ordinary course of the relevant type of transmission.
8. Melb PC may change any term of this Agreement or make additional rules at any time by means of notification delivered in accordance with clause 9. Subscriber may refuse to accept any such change and terminate or her Internet access and receive a pro-rata refund for any paid subscription if a request to this effect this received within 14 days from the deemed receipt date of a notice of changes. Should a subscriber continue to keep using the service past the date of the notice deemed received as described in clause 9, the subscriber shall be deemed to accept the changes. A copy of the rules certified by an officer of Melb PC is conclusive evidence of the rules applicable at any time. The rules from time to time will apply as if they were set out in full as terms of this agreement.
9. The subscriber must not deliberately or recklessly do anything that damages Melb PC's equipment, software, setup or services.
10. The subscriber must not use Internet access to annoy, harass or harm other Internet users including sending of viruses either wittingly or unwittingly and the sending of spam or unsolicited bulk email.
11. The subscriber must not use Internet access for any unlawful purpose or in any unlawful manner.
12. Melb PC does not review any publications or communication and does not verify, endorse, or otherwise take responsibility for the content of same.
13. Subscribers are legally responsible for their own publications and communications.
14. The subscriber will keep safe and confidential any access numbers; codes or passwords allotted to them by Melb PC and notify Melb PC without delay of any compromise of that information.
15. Melb PC may suspend or terminate the subscribers Internet access immediately if the subscriber breaches this agreement wittingly or unwittingly or fails to promptly pay any money owed to Melb PC or ceases to be a member of Melb PC.
16. Melb PC may delete without notice any material found on its storage disks without giving any reason for doing so.
17. Melb PC may make and keep any record it requires for the purpose of this agreement or the rules or for the operation of its services or as required by the law or its officers.
18. The subscriber must not transfer, sell or share internet access rights, or allow the account to be used by any other person, other than those Melb PC Family Members who are listed on this application and have paid the relevant charges.
19. The user's last name must be displayed in all e-mail and news messages. The user's first name or initials may be displayed as desired.
20. Commercial traffic, in the form of private messages and advertisements in newsgroups designated for that purpose, is permitted within the bounds of Net etiquette.
21. The 'Organisation' field in private email or public newsgroup article headers must always be Melbourne PC User Group Australia, the name of the service provider. Any other organisation or business name is permitted only in the four-line (maximum) "signature" text that is optionally inserted at the end of the message or article.
22. The "From" field used in email and news messages may be the Melb PC assigned email address. e.g. jones@melbpc.org.au or a "Spam-trap" address, e.g. jones@notspam.org.au or, subject to Clause 22 an external address. e.g. jones@hotmail.com.
23. Melb PC may assign its rights and obligations to full Internet Subscribers under this agreement to an Internet access provider that is of equal standard to Melb PC and after notice of assignment is given to the subscriber, this agreement shall have operation as if it had been entered into between the assignee and the subscriber and Melb PC's rights (except for its right to recover any money owed to it immediately before the assignment) and obligations under this agreement shall be at an end. Services to Associate internet Subscribers shall be limited to the period Melb PC is able to provide them from its own resources.
24. The parties submit to the law of Victoria, Australia in relation to any the interpretation of this agreement, or any dispute arising out of it.
25. To the extent permitted by law and except as expressly provided to the contrary in this Agreement, all warranties whether express, implied, statutory or otherwise, relating in any way to the subject matter of this Agreement or to this Agreement generally, are excluded Where legislation implies in this Agreement any condition, or warranty and that legislation avoids or prohibits provisions in a contract excluding or modifying the application of or the exercise of or facility under such term, such term shall be deemed to be included in this Agreement. However, the liability of Melb PC for any breach of such term shall be limited at the option of Melb PC, to any one or more of the following if the breach related to goods, the replacement of the goods or the supply of equivalent goods; the repair of such goods; the payment of the cost of replacing the goods or of acquiring equivalent goods, or the payment of the cost of having the goods repaired; and if the breach relates to services the supplying of the services again; or the payment of the cost of having the services supplied again. To the extent permitted by law and except as expressly provided to the contrary in this Agreement Melb PC shall not be under any liability (contractual, tortious or otherwise!) to subscriber in respect of any loss or damage (save for only personal injury and death) howsoever caused, which may be suffered or injured or which may arise directly or indirectly in respect to the supply of goods or services pursuant to this Agreement or the act, failure or omission of Melb PC.
26. Accounts may be suspended without notice to stop transmission of network packets that threaten or have the potential to threaten the security or normal operation of any computer or device on the local or wider network. Such packets are categorised solely by the Internet Management Subcommittee. Users of accounts suspended without notice will be advised by telephone or writing within two working days of the nature of the packets originating from their account. Lifting of the suspension will require the registered account holder to provide evidence of confirmed action being taken to prevent further the transmission of such threatening or potentially threatening packets.
27. The Description of Service "Internet Access Agreement" and the services as described on this application form constitute the entire agreement between the partner and neither of them relies on any term, condition, warranty, collateral contract, representation or promise not set out in those parts of these forms.
28. Authorised by Melb PC Committee, 1st September 2013

I have read the terms and conditions

signed.....dated.....



Membership Drive

Introduce a new member* to Melbourne PC User Group and receive credit towards your membership fees.

Dear Member,

Your friend will receive all the benefits you already enjoy – the digital magazine [PC Update], the help lines, the Special Interest Groups (SIGs), the monthly meetings, workshops, discounted products, email addresses and access to mobile broadband – and you will be helping your club to grow.

Each new member* you enrol gives you two months' credit towards your membership renewal (approx. \$12 value against a full membership). The more new members you enrol, the more credit towards your next membership renewal. No limits apply.

You know how much you enjoy being part of Melbourne PC User Group. So why not bring along a friend to enjoy it too? Prospective new members are always welcome at the monthly or SIG meetings.

And every time you enrol a new member, you get 2 months' credit registered against your next membership dues.

(*This does not include family members and anyone re-joining within 12 months of leaving Melb PC)



ABN 43 196 519 351
(Victorian Association Registration No. A0003293V)
Unit 26, 479 Warrigal Road, Moorabbin VIC 3189
Telephone: (03) 9276 4000
Email: office@melbpc.org.au
Web: www.melbpc.org.au

PCUPDATE Subscription for print version

Name		Membership Number	
Address		Current Contact Email Address	
Suburb	Post Code	Phone	

For	Feb	Mar	Apr	May	Jun	Jul	Aug	Sep	Oct	Nov	Dec	Total	\$	
Month												Amount		

Price: \$4.00 per magazine if you collect it from the office or purchase at the monthly meeting.

Add an Extra \$1.00 postage and handling if we mail your order.

Price for a yearly subscription is \$55.00 inc mailing to your home address.

****Please note current members receive a \$10 discount on the full year subscription.****

Payment Details

Name on Card	Expiry Date on card	Signature	Date
			/ /

MELB PC APPLICATION FORMS



MELBOURNE PC USER GROUP INC.

MEMBERSHIP APPLICATION FORM

Title	First Name	Last Name
Address		
Suburb		Post Code
Phone		Mobile Number
DOB	Preferred Email Address	
Referred by member: _____ full name or membership number /SIG _____		

Annual Membership Fees — 15% Discount if you renew/join for 2 years!

Individuals	\$75 each
Additional Family Members (Spouse and children)	\$22 each
Pensioners/Adult students A (25+)*	\$60 each
Students B (14-25 yrs)	\$35 each

Please provide emergency contact details below.

Full Name
Phone no.
Mobile no.

Additional Family Members

Name	Signature
Name	Signature

Terms and conditions

- Adult students A must attach a photocopy of their student card or letter from their educational institution confirming full student status.
 - All student B members must have a Student Card and have evidence of their age at time of joining.
 - Pensioners must attach a photocopy showing both sides of their Centrelink Pension Concession Card.
- Change of family member(s) must be identified in writing to the club secretary.

I hereby apply for membership of Melbourne PC Users Group Inc. (A000329V) and agree to abide by its rules while I remain a member.

Signature _____ Date ____/____/____

Payment Details

Name on Card	Expiry Date
Credit Card Number	
Signature	Date ____/____/____

Email User Name Selection

List the user ("login") names you would like in order of preference. Write very clearly, to avoid our confusing certain letters. User names are expressed in lower case letters and must represent your real name in some recognisable way e.g. "John J. Jones" might request user names such as "john", "johnj", "jjones", etc. Any user name that is already allocated or deemed unsuitable in the opinion of the system administrators will not be allocated.

- Choice 1. _____@melbpc.org.au
- Choice 2. _____@melbpc.org.au
- Choice 3. _____@melbpc.org.au
- Choice 4. _____@melbpc.org.au

Melb PC New Email Service

Have you Activated your new email account?

We shall switch over to our new email service (hosted by Microsoft) very shortly after Monday 17 February, which is the final deadline for reporting any difficulties with Activating your account.

Accounts that have not been Activated will not be able to receive mail after we have switched over. If you can login at Outlook.com using your full Melb PC email address as your Microsoft account name, with the password you set yourself at Outlook.com, then your account is already Activated.

Activate your account immediately if you have not done so. For any Activation problems email: switchover.melbpc@outlook.com

For all other problems with the new email system, including setting up your new account in your own email program, contact

Internet Help: Phone, 10-3 weekdays: 9276 4088

By using our online form to raise your question: (go to <http://ihelp.melbpc.org.au/helpdesk/iuser/index.asp>)

By sending an email message to: help@melbpc.org.au (please make sure to give your name, membership number, and the username of the account you need help with).



ABN 43 196 519 351
(Victorian Association Registration No. A0003293V)
Unit 26, 479 Warrigal Road, Moorabbin VIC 3189
Telephone: (03) 9276 4000
Email: office@melbpc.org.au
Web: www.melbpc.org.au

EMAIL ACCOUNT APPLICATION

Membership No.	First Name	Last Name	DOB
Address		Current Email Address	
Suburb	Post Code	Phone	Mobile Number

Email User Name Selection

List the user ("login") names you would like in order of preference, up to eight (8) lowercase letters, numbers may be used in place of letters. Write very clearly, to avoid confusing certain letters and numbers. User names are expressed in lower case letters only e.g. "John J. Jones" might request user names such as "john", "johnj", "jjones", "jjones2", etc. Any user name that is already allocated or deemed unsuitable in the opinion of the system administrators will not be allocated.

Choice 1.

<input type="text"/>	<input type="text"/>	<input type="text"/>	<input type="text"/>	<input type="text"/>	<input type="text"/>	<input type="text"/>	<input type="text"/>
----------------------	----------------------	----------------------	----------------------	----------------------	----------------------	----------------------	----------------------

Choice 2.

<input type="text"/>	<input type="text"/>	<input type="text"/>	<input type="text"/>	<input type="text"/>	<input type="text"/>	<input type="text"/>	<input type="text"/>
----------------------	----------------------	----------------------	----------------------	----------------------	----------------------	----------------------	----------------------

Choice 3.

<input type="text"/>	<input type="text"/>	<input type="text"/>	<input type="text"/>	<input type="text"/>	<input type="text"/>	<input type="text"/>	<input type="text"/>
----------------------	----------------------	----------------------	----------------------	----------------------	----------------------	----------------------	----------------------

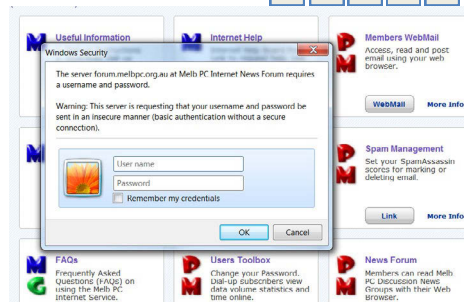
Choice 4.

<input type="text"/>	<input type="text"/>	<input type="text"/>	<input type="text"/>	<input type="text"/>	<input type="text"/>	<input type="text"/>	<input type="text"/>
----------------------	----------------------	----------------------	----------------------	----------------------	----------------------	----------------------	----------------------

For email account hosted at melbpc.org.au webmail which can also be accessed from any mail reading application such as Gmail, Outlook, Thunderbird etc.

Access to the Melb PC newsgroups and a discussion forum where you will find a friendly, helpful bunch of people. Discussions include computing and almost every other topic under the sun!

<http://melbpc.org.au/isp/>



Melbourne PC User Group Monthly Meeting

Wednesday, 5 February at 7pm

It's a surprise!

MELBOURNE PC USER GROUP INC.

Melb PC Headquarters Suite 26 Level 1, 479 Warrigal Road Moorabbin (Corner Cochranes Rd)

Melway: 78 D8

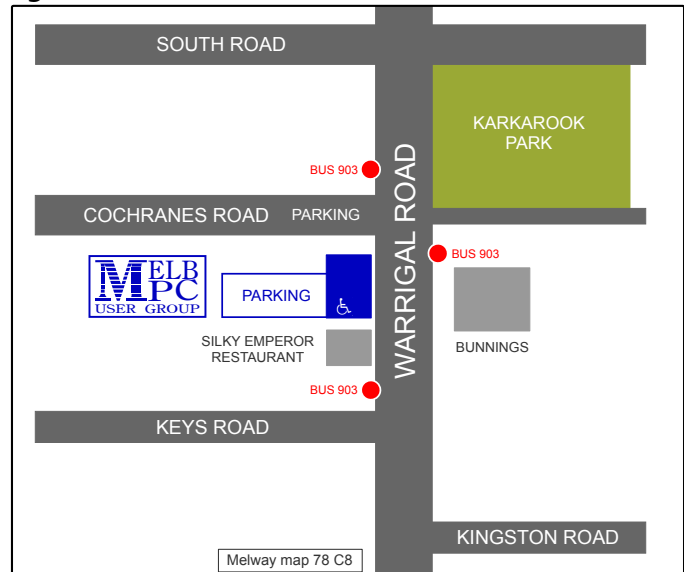
In the evening there is lift access to the 1st floor from the carpark. 

Public transport options

Public transport users can take Smart Bus 903 from several train stations.

The closest are:

- **Mentone station on the Frankston Line** (5 minutes away).
- **Oakleigh Station on the Pakenham/Cranbourne line** (10 minutes away).



Everything iPad/iPhone

A joint venture between MelbPC and AUSOM with an emphasis on the Apple iPad and iPhone, and helping people understand the iOS environment.

Convenor: Dick Johnson 9857 7362
E-mail to: applesig@melbpc.org.au
or everything-ipad@ausom.net.au

**Next Meeting:
February 19**

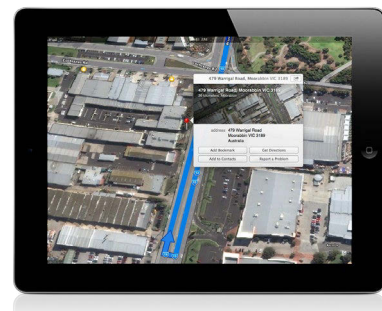
2:00 pm iPad out of the Box *Presented by Dick Johnson*

From powering on your iDevice to opening your first app, Dick walks us through the steps required to bring it to life. We'll look at the Apple ID, iCloud, installing a SIM card and more in our new year 'back to basics' session.

3:00 pm Maps *Presented by Dick Johnson*

Apple has now gone its own way with maps, sporting interactive 3D views with a flyover feature, turn-by-turn spoken directions and a vector-based interface that looks gorgeous in full screen on a retina display. Join Dick as he takes us on a tour of the latest in maps developments.

There will be a short break around 3pm.



3rd Wednesdays, 2:00 pm - 4:00 pm (except January)

Moorabbin Interest Group Room - L1, 479 Warrigal Road, Moorabbin



What's On In February 2014

js14

Sunday	Monday	Tuesday	Wednesday	Thursday	Friday	Saturday
<div> Colour Codes Black: SIG meetings at Melb PC H.Q. Moorabbin. Blue: SIG meetings held at other locations. Dotted Box: No SIG meeting held this month. </div> <p>For information on "Special Interest Group" activities and meeting times see the group details in PC Update or go to http://groups.melbpc.org.au.</p>						1
2	3	4 North East Genealogy (10am - 12.45pm)	5 Monthly Meeting Melb PC H.Q. Moorabbin 7pm sharp	6 Ballarat (7.30pm - 9.45pm) Sunbury Daytime (New Users 9.30am)	7 Essendon (Main Meeting 9.30am) Multimedia (MHE) (Wadham House 10am)	8 Making Money On The Internet (10am - 12noon) Check with SIG convener. Microcontroller Workshop (12noon - 4pm)
9 Mt Waverley East Workshop (10am - 2pm)	10 Access (6.30pm - 8.30pm) Wyndham (General 7.30pm - 9.30pm)	11 WASINT (10.30am - 12.30pm) Everything Apple (2pm - 4pm) Linux Workshop (4pm - 7pm) Linux (7pm - 9.30pm)	12 Video Production (Sony Vegas 10am) Communications (7pm - 9.30pm) Microcontroller (7pm - 9.30pm) East (7.30pm - 10pm)	13 E-Book (7pm - 9.30pm) NeDay GIG (Includes Photography - Digital Imaging Ivanhoe 10am - 12noon) Sunbury Daytime (New Users 9.30am)	14 Casey PC (Narre Warren Library 12.30pm - 3pm) Essendon (Open Forum 9.30am) Hardware (Wadham House 10am)	15 Windows 7 & 8 (Windows 7. 10am - 12noon Windows 8. 1pm - 3pm)
Deadline for March PC Update articles.	Melb PC Committee					
16 MACE (10am - 2pm) Beginners East (10am - 12.30pm) Genealogy (1pm - 3.30pm) Macedon Ranges (Gisborne 2pm - 4pm)	17 Graphics (7pm - 9.30pm) Nth Subs Linux (7.30pm - 9.30pm) Peninsula (Meeting 9.30am Graphics W'shop 12.30pm Genealogy 2.30pm)	18 Wyndham (Multimedia 7.30pm)	19 Everything iPad / iPhone (2pm - 4pm) North East Android (Ivanhoe 10am - 12noon)	20 Music (7.30pm - 9.30pm) Bayside (10am - 12 noon) Sunbury Daytime (General Meeting 9.30am)	21 Essendon (Check website for meeting details. 9.30am) Photoshop (Digital Images Wadham House 10am)	22 Microcontroller Workshop (12noon - 4pm)
Deadline for March PC Update SIG reports.			Melb PC Marketing (sub-committee 7.30pm)			
23 Website Design (2pm - 4pm)	24 Video Inner East (Balwyn 7pm - 9.30pm)	25 Programming (6.30pm - 9pm) North East (Evening 7.30pm - 9.30pm) Yarra Ranges (Meeting 9.15am Workshop 11.30am)	26 Video Production (Pinnacle 9.30am) Essendon (7pm - 9pm)	27 Sunbury Daytime (Maintenance 9.30am. Meeting also held on a 5th Thursday)	28 Casey Workshop (Narre Warren Library 12.30pm - 3pm) Essendon (Check website for Meeting Details 9.30am) Raspberry Pi (Wadham House 10am)	