



Published by  
Melbourne PC User Group Inc.  
Suite 26, Level 1, 479 Warrigal Road  
Moorabbin, VIC 3189

Office hours 9.30am-4.30pm (Mon-Fri)  
Phone (03) 9276 4000  
Email [office@melbpc.org.au](mailto:office@melbpc.org.au)  
Office Manager Dianne Vogt  
ABN: 43 196 519 351  
Victorian Association Registration  
# A0003293V

PC Update Newsletter  
Editor: George Skarbek  
[editorpc@melbpc.org.au](mailto:editorpc@melbpc.org.au)

Librarians: Clemens Pratt 9802 5501  
[cpratt@melbpc.org.au](mailto:cpratt@melbpc.org.au)  
Choy Lai [cplai@melbpc.org.au](mailto:cplai@melbpc.org.au)

Proof Readers:  
Harry Lewis  
Tim McQueen

#### Committee Executive

President	George Skarbek
Vice President	John Hall
Secretary	John Swale
Treasurer	Bill Ford



Melb PC User Group Inc. is a member of the Association of  
Personal Computer User Groups

# PC Update

## February 2017

The Newsletter of Melbourne PC  
User Group Inc.

#### Monthly Meeting Live Stream

Tune in here at 7.00pm on Wed 1 February to view  
the Monthly Meeting live over the Internet.

Test Transmission usually commences at around 6.30pm

<http://tv.melbpc.org.au>

#### Contents

Editorial .....	2
President's Report.....	3
Monthly Meeting .....	4
Committee members .....	5
Book Review.....	5
By Tim McQueen.....	5
Writing for Newspapers .....	7
John Sutherland .....	7
Melb PC Membership Decline.....	10
By Colin Carter.....	10
Server room photos .....	15
By George Skarbek .....	15
Special Interest Groups .....	20
SIG Leaders meeting – January 21 <sup>st</sup> 2017 .....	26
SIG Meetings in February.....	32

## Editorial



This issue marks a very large change in the production of PC Update

Gary Taig produced this magazine for eight years up from 1999 to 2007. Then he came back in February 2015 when Ian Rankin fell ill, and has produced the Newsletter ever since up to last month. He was still using InDesign.

Due to the high workload and a health problem, Gary had to call it quits. On behalf of all our members I would like to thank Gary for the hours and hours that he has put into the magazine.

My plea for a new editor was answered by Ian Rankin who offered to take over. Unfortunately, in early January Ian suffered a health problem that may prevent him from doing anything for a number of weeks. As it was not possible to ask many members during the Christmas break, I volunteered to take over as the temporary editor.

Gary produced the magazine using the professional software, InDesign. However, many years ago I had a very short dabble in InDesign and this was enough to let me know that it has a steep learning curve. As I am moderately familiar with Word, I have created some templates in Word and have made a magazine to the best of my ability.

In case Ian Rankin may not be well enough to resume the task, if anyone who has moderate knowledge of Word would like to take over, our membership will be most appreciative. Two members have already volunteered to help with the proof reading.

### Our Statement of Purpose

*The purposes of the Association are to conduct on a non-profit basis activities to help members learn and use systems and devices using various technologies, especially computing, software, and communications technology (inc. the Internet and World Wide Web, personal computers & devices), to achieve the following outcomes;*

- Advancing computer literacy;
- Advancing education and the exchange of ideas;
- Keeping members up to date on developments in computer and information technology and helping members to exchange information;
- Representing members in public debate in areas of interest including law reform proposals;
- Engaging with similar organisations; and
- Carrying out activities that benefit the Association

All Quotable quotes have been selected by George Skarbek

## President's Report

The committee has been busy over the Christmas break and we are working on a number of topics. Below is a quote from a posting on Yammer in mid-January by our Treasurer who has expressed this far better than I could.

*In the 11 weeks since the Committee was elected the Executive Group has met on an average of over 1 hour a week to work through a number of issues and has spent considerable time outside those meetings in mutual communication and working on the various matters collectively, individually and at all times in a sense of harmony and seeking the best interests of Melbourne PC.*

As there have not been any SIG leaders meeting for a couple of years, John Morris who has the SIG portfolio arranged a meeting in the second half of January. SIGs are an essential part of Melb PC and this meeting covered a number of topics to help SIG leaders. There were a number of speakers and the main topic covered were:

- Office 365 is going to be an essential part of having all data in one database. Currently SIGs have their own mailing lists, own calendar of meetings on their own web site,
- How to make the individual SIG web pages with the same look as our home page and be able link into our home page. This included a basic demonstration of using the Umbraco front end to set up the web pages with offers to have one to one tuition.
- Information on Home Visit.
- Discussion and request for input for the replacement of the current MMS (Member Management System) which was written before Internet became popular. The replacement must allow individual users to be able to change their address, pay subs all without manual input. This will greatly reduce the hours that require office staff.
- Guidelines and methods to attract new members to Melb PC and their SIG.
- Basic tips on SEO (Search Engine Optimising) to help local residents to find their SIG.

See photos of this meeting on page 26

The most important data that Melb PC has is the MMS database. It was tailor written to replace a DOS based system approximately 13 years ago. The last five or more committees were going to do something, but nothing was done. The main problem is that members cannot update their own details or pay their subs, because when this was written there was very little Internet and it only dial-up and expensive.

We are fortunate that Frank Maher was volunteered, and accepted, to be the project manager. Frank was responsible for the contractor design coordination for all the high speed lifts in the Rialto Tower. They were the highest and fastest lifts in the southern hemisphere at that time. Frank delivered this project on time and under budget. The sub-group is looking into many alternatives as the final software must be able to integrate into our accounting package, QuickBooks. When completed this should be able to reduce the current senior office staff to perhaps a one day a week position with very considerable savings.

The executive are currently looking into the role of the office manager, examining what work is actually being done and what percentage can be done by volunteers such as iHelp.

A couple of months ago I raised the possibility of finding new members by asking you to write a short article for your local paper why you are a members of Melb PC. One of our members, John Sutherland, has sent me a good article on Writing for Newspapers. If anyone has a story to write, please read that article on page 7. After writing your story, please include a couple of photos and send it to [committe@melbpc.org.au](mailto:committe@melbpc.org.au) with your name and suburb so that it can be sent to the local newspaper. In the photos it may be best if you are near a computer and with a grandchild.

# Monthly Meeting

## Wednesday 1st - February

At 7.00 pm sharp the meeting will open with our regular Q&A Session.

At about 7:20 there will be a new section, also presented by George Skarbek, called What's New and will mention some new forthcoming advances largely, but not entirely, related to computer technology.

Then we will hear the President's Report.

Next, Colin Carter will give a presentation on **The Decline of Melb PC Membership** and the consequences and what to do about it.

This will be followed by a 20 minute Interval and the Raffle Draw.

Afterwards, Dave Botherway will give a presentation on **Home Networking - What, Why, How . . .**

Meeting will conclude at 9.30pm.

After the meeting, we get together for WAFFLE@FONG. The WAFFLE SIG ("Wine And Fine Food Lovers' Event") will be at FONG's Chinese Restaurant, 725 Centre Rd Bentleigh East, Corner of Francesco Street, Melway: 77: J-1

If you can't make it to Moorabbin, be sure to tune in to <http://tv.melbpc.org.au> for a live broadcast of the meeting. Test transmission usually begins at around 6.30pm

## Quotable quotes

Sattinger's Law:-

It works better if you plug it in.

A human being is the best computer available to place in a spacecraft. It is also the only one that can be mass produced with unskilled labour."

Werner Von Braun

In the beginning was the word - and the word was four bytes.

Bug? That's not a bug, that's a feature.

T. John Wendel

Lord, give me strength to turn this machine off.





## Committee members



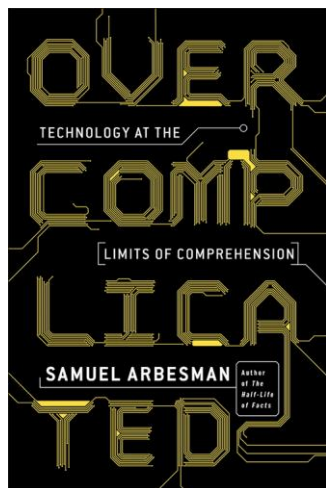
The current committee members are - Front row from the left: John Hall (Vice-President), Paul Woolard, John Morris, Harry Lewis and David King. Absent Chris Hughes. Back row from left: Bill Ford (Treasurer), John Swale (Secretary) Stewart Gruneklee, George Skarbek (President), Phil Lew and Ernie McCarthy. Photo taken by Steph Lancaster at the January committee meeting.

## Book Review

*By Tim McQueen*

### **Overcomplicated – technology at the limits of comprehension.**

By Samuel Arbesman



This is a very interesting little book. Arbesman's basic conjecture is that systems have become so complicated that no single person can understand all aspects of them. How many of us could swear we know how each and every component in a smartphone works?

The first issue is entanglement – the inextricable way technology and nature have become intertwined. Should we fear this or venerate it? Perhaps a sensible middle path is the best approach.

Arbesman then explores the development of the kluge – code that works, but we're not quite sure how, or why. This is partly due to accretion: building new systems on old foundations. I can remember during the late 90's looking for Y2K issues and finding that some of the major airline booking systems had communication components still based on (5 bit) Baudot code. Then there's interaction. Using the same experience the only way we could obtain airline booking data was by screen-scraping. Now, booking apps interface directly to

the airlines' systems. Arbesman doesn't like GO TO. He examines in detail edge cases, common rarities and the imperfect nature of the forces driving us to the solutions we choose. There are also problems caused by the sheer size of systems and the numbers of contributors, often experts in one small subset of the desired whole.

The third chapter 'Losing the Bubble' examines the way systems sometimes deliver completely unexpected results, with the US Volkswagen experience of cars experiencing uncommanded acceleration as a prime example. We know systems are capable of recursion – far more so than the human brain. It's quite simple to build a system that is too complex to handle. Starting afresh is not usually an option.

Arbesman delves into bugs and what glitches can teach us in our bug-ridden world. He contrasts the way biologists and physicists approach complexity and suggests that we might need 'biological thinking' and in any case should attempt to walk humbly with technology. Arbesman invokes the Yiddish word Naches: vicarious pride in the accomplishment of others, especially one's children. He suggests this is an approach we can use to systems we've helped develop.

The book is very American. One valuable resource is his comprehensive list of further readings. There is plenty to think about in 176 pages.

Current (An imprint of Penguin Random House) 2016  
ISBN: 9781591847762

## Quotable quotes

The computer 'Doth make fools of us all'.  
Weinberg

Hindsight is an exact science.

There is no force so powerful as an idea whose time has come.  
Everett Dirksen

The more times you run over a dead cat, the flatter it gets.

How can you respect a machine controlled by a mouse?

*Time flies like an arrow.*  
*Fruit flies like a banana.*  
Example of why it is difficult to get computers to understand human speech.

The Internet is so big, so powerful and pointless that for some people it is a complete substitute for life.  
Andrew Brown

If at first you don't succeed, redefine success.  
If at first you don't succeed, give up, no use being a damn fool.  
If at first you don't succeed you're running about average.  
If at first you don't succeed, try something else.  
If at first you don't succeed, you'll get lots of advice.  
If at first you don't succeed, skydiving is not for you.  
If at first you don't succeed, destroy all evidence that you tried.  
If at first you don't succeed, shouldn't you try doing it like your wife told you to?

100,000 lemmings can't be wrong.

# Writing for Newspapers

*John Sutherland*

## **Everyone has a Melb PC Story to Tell but not Everyone is Ready to Sell it!**

**Melb PC** needs a new image, well perhaps not quite a new image, but we do need to think about how we might now connect more people with what we do offer. A big ask you say when we have tried advertising and the like in the past such as at swap meets and with printed material. And that worked in the early days because we had something to sell that people needed (Dial Up) and a new forum for people with desktops. I was interested in Dial Up for business and I believe I still have a copy of the A4 coloured brochure that was handed to me at a Computer EXPO at Jeff's Shed. But let's first review that brochure example and a way in which the value of that initial contact with myself could have been strengthened.

Back then Dial Up was new to me, though I had Telstra Easy Mail at the time, so maybe I put Melb PC Dial Up to the side while I was working on building my new Consulting Business (not IT) using the existing forms of contact: landline, FAX, pager, desktop and snail mail, along with a small amount of paid advertising. The mobile came a little later. Word of Mouth recommendation was my most amazing connection to new Business. So, is there any other reason why my Melb PC brochure was put aside for the time being? Yes. I would call it lack of follow up from Melb PC and perhaps in a sense '*closing the deal*'. Let me explain. Handing out a brochure and perhaps taking time for a bit of a chat that includes a few *open* questions<sup>1</sup>, is step one. But making it personal by handing over *your own printed Melb PC Business card* (printed both sides) along with an invitation to a follow up call could add weight to what you have already shared. That is a well-known path towards effective networking: connection and follow up. I believe we need to think through how this could work better for Melb PC today.

Our President George challenged the Members of Melb PC at our December Meet to be opportunists by writing our own story of *why Melb PC*. As George said, like all print media, Suburban Newspapers are searching for copy which suits the varied interests of its readers in an almost ready to print form. George mentioned Advertorials, which are another form of paid advertising with copy put into a story context<sup>2, 3</sup>. They are mostly from local businesses or sometimes from Community groups (who want story space for free), all of whom want to expose readers to what they have to offer. Sometimes these stories come with tips about what you need to know and what to avoid. Some stories may include a Social aspect of membership such as with a Probus Club or a Bowls Club. Likewise Melb PC.

Now I gathered George wanted to keep a simple thought before us like, '*Just write a brief story about how you get value out of your Melb PC Membership*'. In other words, a short story that captures a reader's attention and perhaps get their interest to know more, plus send it with a photo<sup>4</sup>. The reference here to Photo<sup>4</sup> speaks more about earning payment for a 'news' picture, so check out the leads on this site. But not just any photo and here we may need a few skilful shutter bugs to get the technical details working to increase the chance of getting the copy into print. True, every picture tells a story but only if the story can be seen in the picture. Let's get that one right too.

George wanted positive feedback and even invited us to start writing and sending it in for fact checking by our Committee. I warmed to this bright idea, thinking about the wealth of stories amongst our Members which largely remain hidden from the general public. And what about the often less-experienced Social side of this Club and its values? But is writing Copy for a Newspaper straight forward like writing for PC Update or advertising material or a letter to a friend? The quick answer is no but before I describe the simple *how to*, let's look at Copy from an Editor's chair.

It is true what George said about how Editors want topics or columns to put a balance between paid advertising and regular news. Even more so with Suburban Newspapers who run a different format to the big time Newspapers? However, not all Copy ends up in print, simply because an Editor does not have the time or insight to rewrite what they have received. An Editor has space to fill in their Newspaper quick-time and wants quality material at the right price and if that means Copy at little or no cost, spot on. Often the time is close for the Newspaper to be put to bed (printing) and an

Editor might be searching say to fill a two column space with a total column length of 30cm. A piece of copy is being scanned by the Editor but it is more than is needed to fill the space. This copy would meet the interest of their readers but it must be chopped to fit the space to be filled. This is where the work of the writer can be diminished in value and impact. And how does an Editor *chop* any copy? They delete sentences and paragraphs till the space requirement is met and it is done quickly. They do not add material themselves. So, that brings us to the focus of this article, *Writing for Newspapers*.

We have a simple tool to use when preparing Copy to ensure the thrust of why we are writing gets printed; the essential details. Below I present a single copy written in two formats to explain why this tool is needed. To keep it simple, I have chosen to advertise or present news for an upcoming Melb PC monthly meeting. I have prepared two drafts as follows:

**Example 1.** *Melb PC is the oldest personal computer support group in the world and has its Head Quarters in Warrigal Road, Moorabbin. The diverse membership of Users Helping Users always meets on the first Tuesday of each month except for January.*

*Our guest speaker for next month, June 7 will be William Gatehouse, founder and owner of Software Perfect International. This is a unique opportunity to hear the Software Perfect story and to speak to the man himself.*

*All meetings start at 7.00pm sharp at Melb PC Clubrooms, Unit 26, 479 Warrigal Road. Moorabbin, near Cochranes Road. All are welcome. Phone 9276 4000 during office hours for further details.*

**Example 2.** *The special guest speaker at the Melbourne PC monthly meeting at Moorabbin on June 7 will be William Gatehouse, founder and owner of Software Perfect International. As usual this meeting will be on the first Wednesday of the month and as always, start at 7.00pm sharp.*

*Melbourne PC can be found at Unit 26, 479 Warrigal Road, Moorabbin, near Cochranes Road, phone 9276 4000. Guests are always warmly welcomed.*

*This is a unique opportunity to hear the Software Perfect story and to speak to the man himself.*

*Melbourne PC has a diverse membership of Users Helping Users and is the oldest Personal Computer Group in the world.*

A question. Which example above would win out on information if an Editor needed to chop bits out to fit the copy, to draw a line somewhere and delete what's below? While you are thinking about the answer, let me give you the tool to use. It is simply an inverted pyramid concept on paper! Segment horizontally with three or four (for this size story) equally spaced sections.

Present your story in this way. The first sentence or paragraph at the top of the inverted pyramid has more space for all of the essential facts needed in the copy. All information that follows in the other sections only builds on that summary. As one writes down the pyramid, the space narrows meaning you are now *padding out* the story. Practice by drawing an inverted pyramid as described and writing directly into each section. No matter how good you believe your copy is, the Editor has his own thoughts, so if rejected, be encouraged and go back to the keyboard for another shot at the same copy. There may well be some *sleeping* editors within our membership who may be happy to guide you in some way.

Example two is the answer to the question above, even though the word-count (that was not planned for my examples) in each is almost the same. Only the address, phone number and an open welcome is in the second paragraph. A story such as the value of Melb PC to you or a special SIG or challenge would fit into a much larger inverted pyramid. Photos are also subject to space and must be fit-for-use. Also, they would need meet certain technical standards and most likely adhere to a given format in a data file.

**Footnote:** In certain areas of writing, an equation called *The Fog Index* can be used. I do not remember the equation so I looked it up and here are a couple of useful explanations<sup>5,6</sup>. The key fact to note is use simple words whenever they will fit the text. To explain further I now write the same sentence using more multi-syllable words: *The most important fact*



to remember is use words with less than three syllables. Where I had one multi-syllable word, I now have three in the re-write. The idea of the Index is to understand how acceptable an article, story or report might be to another person. Again, let's edit that sentence for easier reading: *The idea of the Index is to gain an insight into how another person might grasp what is being said in an article, story or report.* This is what I try to do every time I write; you might run your eye over what I have written above. I'm sure I made a good start in that area.

## Useful Background References

[http://changingminds.org/techniques/questioning/open\\_closed\\_questions.htm](http://changingminds.org/techniques/questioning/open_closed_questions.htm)

<https://christopherwritescopy.com/2015/11/30/articles-vs-editorials-vs-advertorials-vs-press-releases-whats-the-difference/>

<http://www.rhetoric-artofpersuasion.com/pr-press-releases/explanation-of-the-difference-between-a-press-release-editorial-and-an-advertorial/>

<http://www.pixalo.com/articles/Submitting-your-photos-to-newspapers.php>

<http://www.klariti.com/business-writing/Fog-Index-Readability-Formulas.shtml>

<http://gunning-fog-index.com/> (a tool to use ... try it)

## Quotable quotes

After all is said and done, a lot more has been said than done.

The journey of a thousand miles begins with one step.  
Lao-Tsze

A journey of a thousand miles begins with a cash advance.

Hindsight is an exact science.

All animals are created equal, but some are more equal than others.  
George Orwell

1948 - A novel for dyslexics by George Orwell.

What if there were no hypothetical questions?

What attracts us in a woman rarely binds us to her.  
J.C. Collins

Luxury is a necessity that begins where necessity ends.  
Coco Channel

It is only when they go wrong that machines remind you how powerful they are.  
Clive James

# Melb PC Membership Decline

WHERE HAVE WE COME FROM, AND WHERE ARE WE GOING?

By Colin Carter

Like many Members I was somewhat disillusioned when the Treasurer of Melb PC, whilst proposing a Membership Fee increase at the 2014 AGM, stated that the fee increase would bring the budget into balance by mid-2015.

A mathematical impossibility many thought! Whilst losing about 700 Members per year with a resulting decreasing income of over \$50,000 year on year it was inconceivable that the statement was in any way rational or real.

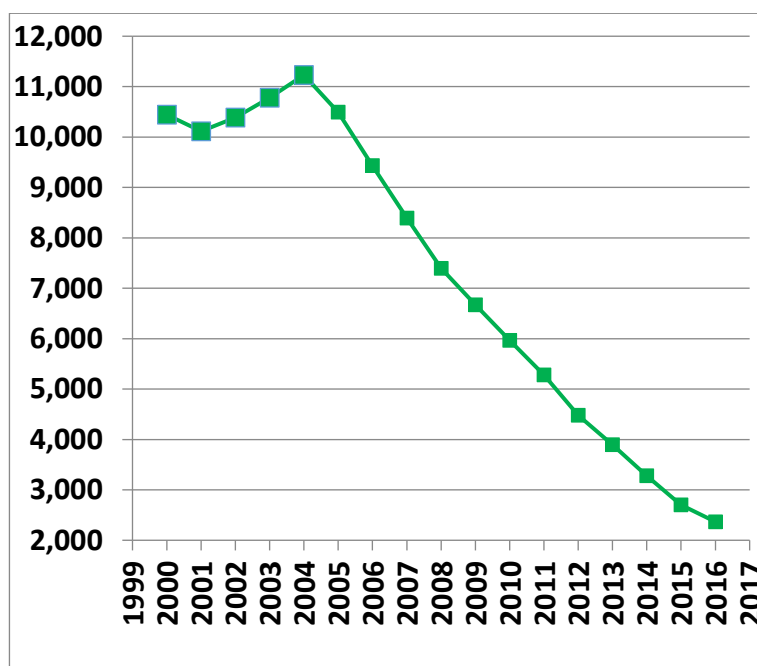
So an initial review of the Membership position generated a “heads up” email to our President and Committee in 2015, and the article went onto Yammer in April, 2016.

***What’s it all about. Are you aware we are losing Members at a great rate? What is Plan “A”? Do we have a Plan “B”? Where have we come from? Where are we going?***

Table #1 – Membership History

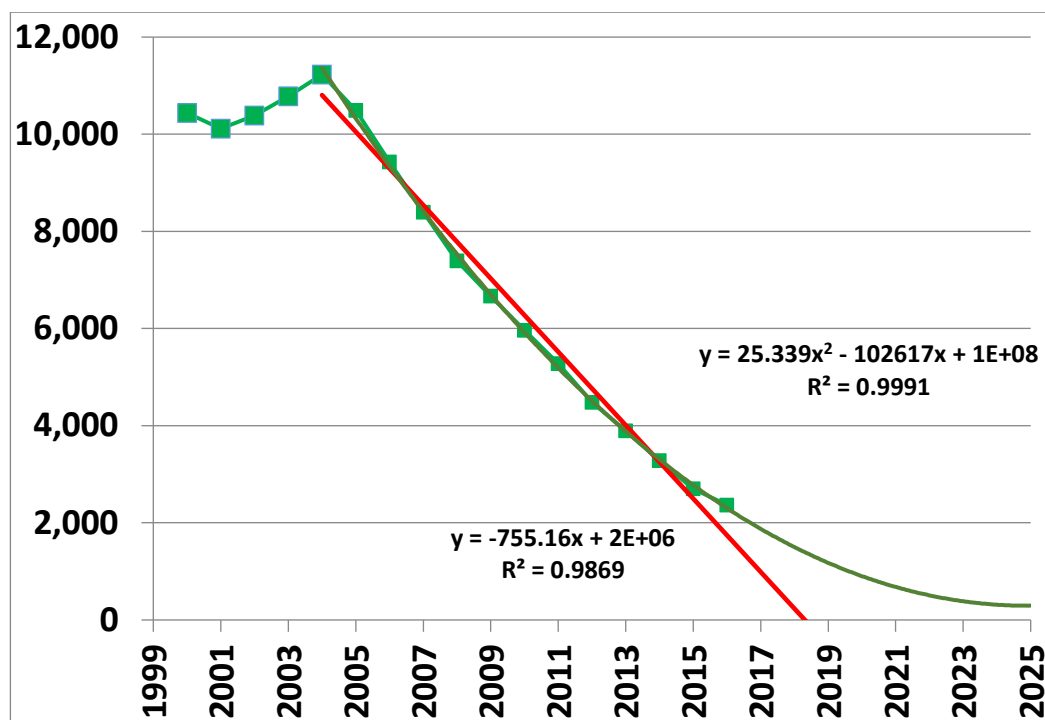
YEAR	MEMBERSHIP	DECREASE	% DECREASE
2000	10440		
2001	10115	325	3
2002	10386	-271	-3
2003	10778	-392	-4
2004	11230	-452	-4
2005	10491	739	7
2006	9430	1061	10
2007	8392	1038	11
2008	7392	1000	12
2009	6669	723	10
2010	5963	706	11
2011	5279	684	11
2012	4478	801	15
2013	3893	585	13
2014	3282	611	16
2015	2700	582	18
2016	2367	333	12

Graph #1 – Membership History



We have been on a very slippery slide since 2005 (coincidentally the year we moved to Chadstone). And the easiest way to look towards our future is to extrapolate from the available data.

Graph #2 – 1<sup>st</sup> and 2<sup>nd</sup> Order Polynomials



The linear trend line emphasises that the data is actually a curve, but still has a reasonable correlation coefficient. Better still is the 2<sup>nd</sup> order polynomial or quadratic line. (Many would try even higher order polynomials, but don't appreciate that whilst the fit of the resulting line to the data improves (i.e. interpolation improves), there is a very significant loss of "fit" outside the data set, i.e. when trying to extrapolate which is what we are trying to do.).

When analysing data it is very important to look at the data from as many directions as possible and gain as many insights as possible.

One consideration is that factors driving the loss of Membership in the earlier 2005-2010 period might be different to more recent factors. In-depth analysis showed that the pattern (or factors driving the Membership loss) has been consistent from 2005 to now. Another outcome is that nothing which has been attempted to halt the loss has had any influence on the decline.

A further consideration is which Membership categories are we losing the fastest. (Are the Pensioners holding their own.....?)

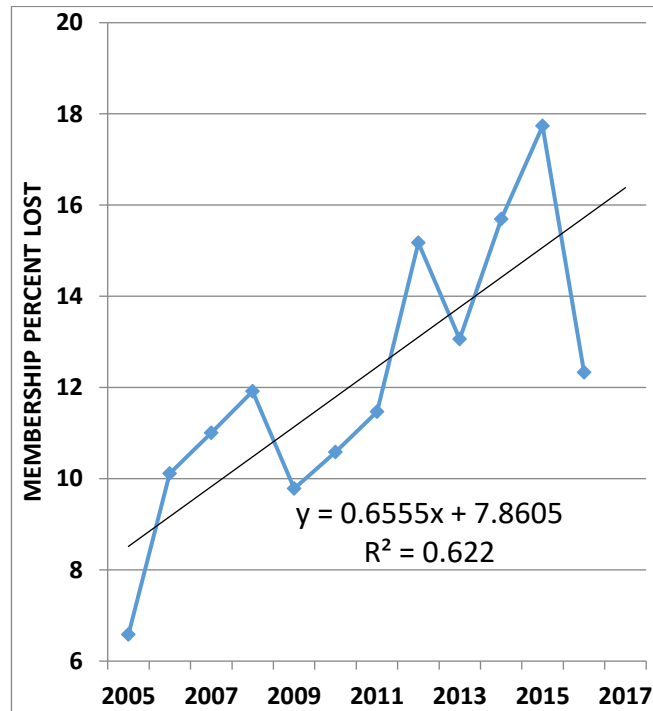
Table #2 – Membership Loss by Category 2016

	TOTAL MEMBERSHIP	STUDENT B	CORPORATE	INDIVIDUAL	STUDENT A	FAMILY	PENSIONER	HONORARY
1/7/2015	2729	5	3	1638	8	280	761	29
1/7/2016	2367	2	2	1393	7	246	684	29
LOSS	362	3	1	245	1	34	77	0
% LOSS	13.3	60	33	15	13	12	10	0

Yes, the Pensioners are holding their own, losing only 10% for 2015-2016! The major rate of loss is from the Individual Membership category which declined 15% in 2015-2016.

Another consideration is what's happening to the overall rate of change of Membership?.

Graph #3 – Rate of Membership Loss



The rate of loss is increasing approximately linearly albeit from a lower Membership number year on year.

What else can we determine?. Well, **what is a sustainable number of Members?**

Using 2015-2016 financial year data –

- Net cash outflow = \$195,000
- Membership Average fee = \$72 per Member (or primary source of cash inflow)
- So Sustainable Membership =  $195,000 / 72$  = 2708 Members
- And our current Membership is about = 2150 Members!!!!

So we are already about 550 Members below a sustainable level.

We can also determine **“Do We Run Out of Money or Members First?”** Using the above financial year 2015-2016 data, as well as the earlier projected rate of change of Membership data, we can create a picture of what might happen.

Table #4 – Members v Cash

FINANCIAL YEAR END	% DECLINE IN MEMBERSHIP	MEMBERSHIP	MEMBERSHIP INCOME	CASH OUTFLOW	CASH ON HAND
2016		2367			\$ 620,000
2017	16	1988	\$ 143,037	\$ 195,000	\$ 568,037
2018	17	1650	\$ 118,721	\$ 195,000	\$ 491,757
2019	18	1353	\$ 97,351	\$ 195,000	\$ 394,108
2020	18	1110	\$ 79,828	\$ 195,000	\$ 278,936
2021	19	899	\$ 64,660	\$ 195,000	\$ 148,597
2022	20	719	\$ 51,725	\$ 195,000	\$ 5,325
2023	20	575	\$ 41,383	\$ 195,000	-\$ 148,292
2024	21	454	\$ 32,692	\$ 195,000	-\$ 310,600
2025	22	354	\$ 25,500	\$ 195,000	-\$ 480,100

So using the above data we run out of cash around 2022 whilst still retaining the Moorabbin asset and about 700 Members.

And it goes without saying that the Treasurer, aided by Committee, is currently doing an in-depth analysis of the accounts to see where the \$195,000 outflow of cash can be reduced. But bear in mind that any reductions are countered by rising costs such as Council Rates, Owners Corp. Fees, Insurance, etc.. Any changes, up or down, will obviously affect the predictions.

**Do we have a Plan “A”?** Yes we do. George has identified the “Lets Market Ourselves” plan in the December Monthly Meeting (see the video if you missed it) and also the President’s Report in December’s PCUPDATE.

George is looking for 200-400 word articles identifying why you belong to Melb PC and what might attract others to join, plus photos, sent to the Committee to circulate to local newspapers.

Since Georges push with Plan “A”, there has been a New Year’s Resolution Extension to Plan “A”. Please ask two of your friends or neighbours to join Melb PC. Its that simple.

**What is Plan “B”?** Well, we have a framework

Table #5 – Plan “B” Framework

• 2022	RUN OUT OF CASH – BUT STILL HAVE MOORABIN
• 2021	SO MUST SELL MOORABIN BY END 2021 AT LATEST (ELSE BANKRUPT)
• 2019	PUT MOORABIN ON THE MARKET LATE 2019 (1 OR 2 YEARS TO SELL?)
• 2018	FIRM UP OUR FORWARD STRATEGY
• 2017	DEVELOP OUR FORWARD STRATEGY
(Constructed using data and assumptions from above)	



And there is a lot of flesh to be put onto the Plan “B” bones this year, and the number of questions to be answered is prolific, like –

Table #6 – A Few of the Many Questions for Plan “B”

How to restructure? Should we rent or sell Moorabbin?  
How to use the Moorabbin proceeds? What is “life after Moorabbin”?  
And for how long (a sustainable restructure?)?  
Do we make each sig an independent incorporated association?  
How does plan “b” impact current hardware and software spending decisions?  
Etc., Etc.

#### **YES, IN SUMMARY.....**

Our membership is rapidly declining, much, much faster than we would like.....and we currently aren’t sustainable.....fact!

#### **WE DO HAVE A PLAN “A” ....**

And I indulge all members to help with your literary prowess...  
and also invite your friends and neighbours to join..... we could easily become sustainable.

**AND WE DO HAVE A PLAN “B”** - Which needs a lot of work...and we hope we don’t need it  
.....but....it will be there if we do...

### **Quotable quotes**

For your convenience, we recommend courteous, efficient self-service.  
Hong Kong sign

It’s all in the mind, you know.  
The Goon Show

And there's more where that came from.  
The Goon Show

Eternity is a terrible thought...where will it all end?

1,000,000 Sperm And YOU Were The Fastest??

Jesus Loves You, the rest of us think you're an idiot.

Advertising may be described as the science of arresting the human intelligence long enough to get money from it.

The road to success is usually under construction.

# Server room photos

*By George Skarbek*

Most users will have not seen our server room at Moorabbin. I have not been there for some years. However, a couple of months ago when testing my electronic key access I decided to take some photos to allow our members to see what is there. I was pleasantly surprised how tidy it was. When you consider that a number of volunteers have been working there for some years, this shows pride in their work.

Most of the racks, shelving & Cisco equipment were salvaged by Admin team members from several large corporations after they had upgraded their networks.

As a photographer, I took the camera but did not notify anyone about taking photos. In my opinion an artificially clean room would not look quite correct. However, in my opinion, it is a credit to the current admin team.

I would like to thank Sean Clark for providing captions for these photos.



Operators Desk with assorted notes, mad scribbles, experiments and network ports for our various networks.



Work Bench. Filling cabinets contain notes, records, tools & assorted hardware. Cupboards contain critical spares and the all-important fridge for the late night upgrade & maintenance sessions. The benchtop is used for repairs. On the far left you can see a large black machine undergoing maintenance. This machine hosts the MMS (Member Management System). It is the most important software that the Melb PC has. The operating system of the MMS server is Ubuntu Linux.





The MMS database is the most important software that Melb PC has. The operating system of the MMS server is Ubuntu Linux.

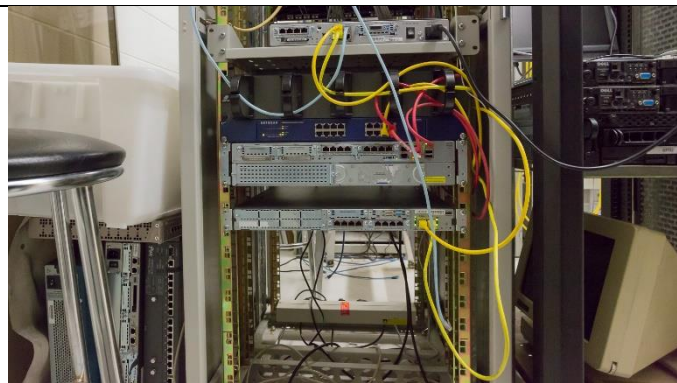


Suite 3B, Spares rack, Assorted networking equipment and cables.

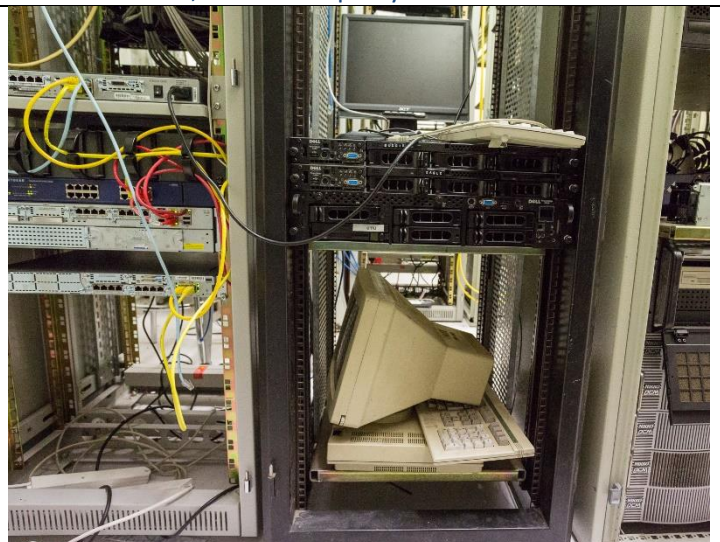
Close-up of the Operators Desk. PC on the right is the primary maintenance PC used for record keeping. Directly above it, is the Fibervision rack. Right where you can bump your head.



Suite 3B, Spares rack, Decommissioned Ascend & Portmaster, from dial-up days. Remote Access Servers.



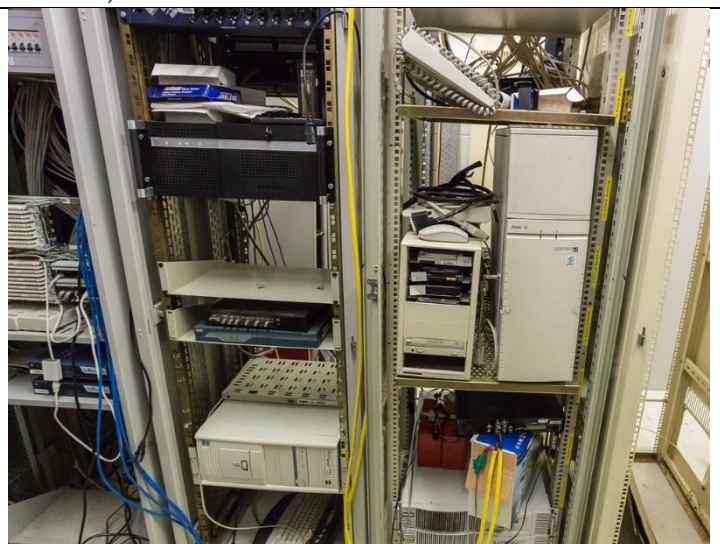
Suite 2A, Rack 1. Core, Internet & Hosting routers.



Suite 2A, Rack 2. Decommissioned Internet servers.

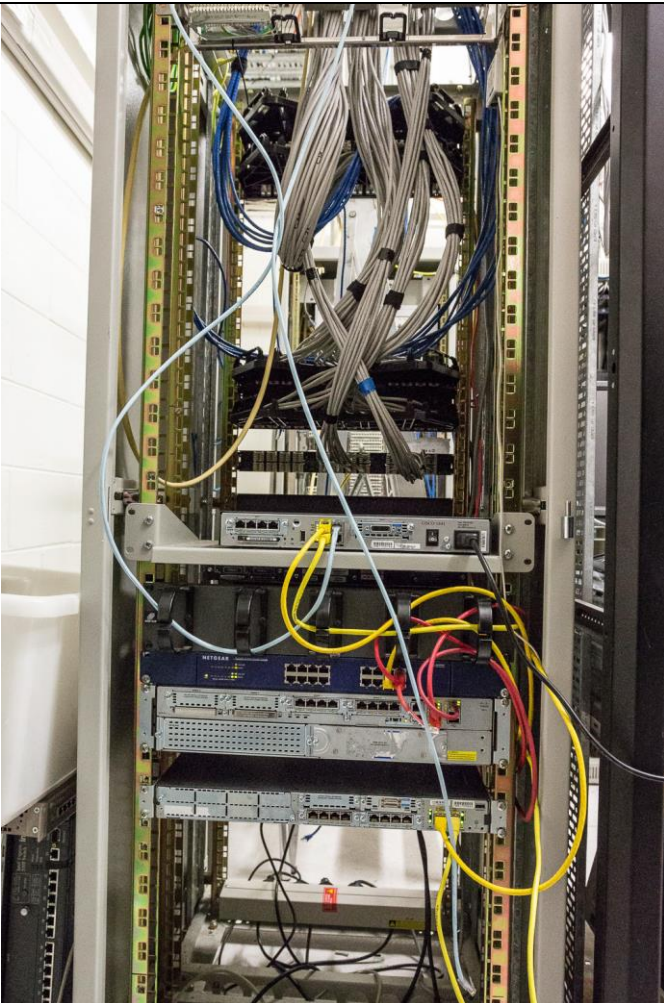


Suite 1A, Rack 3. Fog Server (Contains OS images for Training room PCs) Visible on right is 3KVA UPS with 3 extension batteries. On top is 2 additional batteries for the Security cameras.





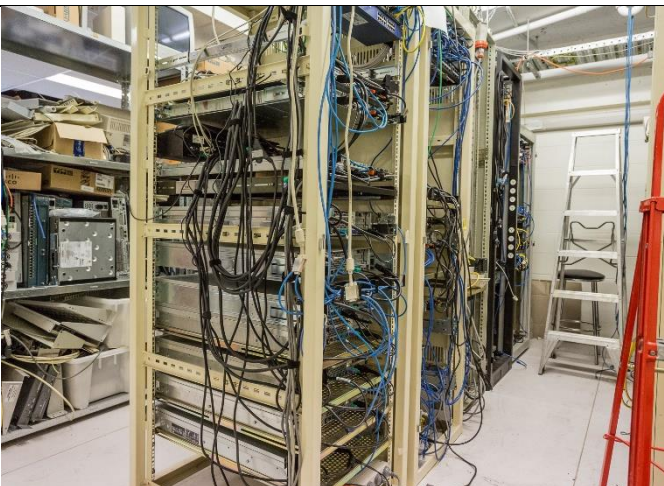
Suite 1A, Rack 2.(left), Asterisk PABX & FOG server. Rack 3 (right) Suite 1. UPS, BBS and security camera server The operating system for the Asterisk PABX is CentOS Linux. .BBS operating system is OS2.



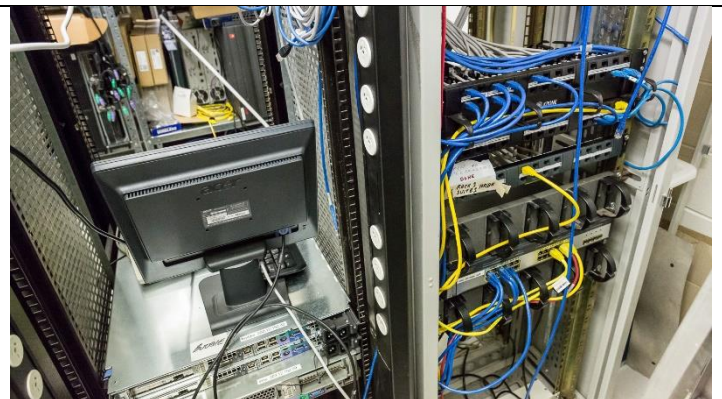
Suite 2A, Rack 1. Rear of Inter suite & rack CAT6 tie cables can be seen above the routers.



Suite 2A, Rack 3. Top of Suite 2 UPS rack, spare fibre switches and KVM.



Suite 2B (rear of Suite 2A).



Suite 2B, Racks 2 & 1. Rack 1 Inter Suite & Rack CAT6 ties.





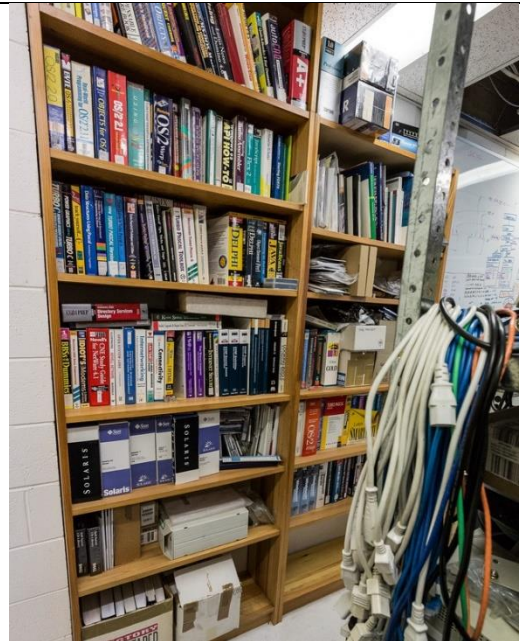
Suite 2A, Rack 4. Backup NAS (Network Attached Storage) & VMware host. The operating system for the NAS box is NAS4free BSD.



Suite 2A, Rack 5. Internet servers. The operating systems are Debian & Ubuntu Linux .



Suite 2B, Racks 4 & 5. Internet servers & Switches.



The server room Library.

For more photos of the server room with larger images see: <http://www.skarbek.com.au/mpc/>



# NEW OPTUS Wi-Fi MODEMS AVAILABLE



**Have you got Optus Mobile Broadband with Melbourne PC?**

**Interested in upgrading your modem to get Wireless Connectivity?**

**Contact the office today to find out more and purchase your own mini Wi-Fi today!**

4G USB Wi-Fi Modem—HUAWEI E8372 (including car kit)



Mobile Wi-Fi Modem—HUAWEI E5377



## Quotable quotes

Clothes make the man.  
Naked people have little or no influence on society.  
Mark Twain

If you try to fail and succeed, which have you done?

Ever stop to think, and forget to start again?

Eat Right, Exercise, Die Anyway

He who laughs last thinks slowest

Advertising may be described as the science of arresting the human intelligence long enough to get money from it.

We are all special cases.  
Albert Camus

Man is a social animal who dislikes his fellow beings.

In theory, there's no difference between theory and practice, but in practice, there is.

It is dangerous to be right, when the government is wrong.  
Voltaire

Money is the root of all evil, and man needs roots.

# Special Interest Groups

## SIG Meetings & Contact Details

Updated: January 2017

**Amendments:** please advise changes/corrections to [editorpc@melbpc.org.au](mailto:editorpc@melbpc.org.au)

### Access (database) and Excel

Date (Feb-Dec)	Second Monday of the month Incl. June Queen's Birthday
Time	6.30pm – 8.30pm
Email	<a href="mailto:access@melbpc.org.au">access@melbpc.org.au</a>
Location	Melb PC HQ, Moorabbin.
Convener(s)	Craig Evans <a href="mailto:Craig_Evans@racv.com.au">Craig_Evans@racv.com.au</a>

### Bayside

Date (Jan-Dec)	Third Thursday of the month
Time	10am – 12noon
Email	<a href="mailto:bayside@melbpc.org.au">bayside@melbpc.org.au</a>
Location	St. Stephens Church Hall, Cnr Cochrane Street and North Road, Brighton.
Convener(s)	Peter Carpenter Les Johnson & Brian Fergie

### Beginners East (Beast)

Date (Feb-Nov)	Third Sunday of the month
Time	10am – 12.30pm
Email	<a href="mailto:beast@melbpc.org.au">beast@melbpc.org.au</a>
Location	Vermont South Community Centre, Karobran Drive, Vermont South.
Convener	Dave Botherway

### Casey

Date (Feb-Nov)	Second Friday of the month
December	Second Friday (Xmas Function)
Time	12.30pm – 3pm
Email	<a href="mailto:jwhit@jwhitaker.com">jwhit@jwhitaker.com</a>
Location	Narre Warren Library (Fountain Gate), Overland Drive, Narre Warren 3805.
Convener(s)	Jan Whitaker 9705-9009 Jan Weiner 9796-2807

### Casey Workshop

Date (Feb-Nov)	Fourth Friday of the month
Time	12.30 - 3pm
Email	<a href="mailto:weijan@westnet.com.au">weijan@westnet.com.au</a>
Location	Narre Warren Library (Fountain Gate), Overland Drive, Narre Warren 3805.
Convener(s)	Jan Weiner 9796-2807 Jan Whitaker 9705-9009

### Communications

Date (Feb-Dec)	Second Wednesday of the month
Time	7pm – 9.30pm
Email	<a href="mailto:phil@melbpc.org.au">phil@melbpc.org.au</a>
Location	Melb PC HQ, Moorabbin
Convener(s)	Phil Lew 0418-567-019

### Digital Images

Date (Jan-Nov)	Third Friday of the month
Time	10am – 12noon
Email	<a href="mailto:hockey@melbpc.org.au">hockey@melbpc.org.au</a>
Location	Wadham House, 52 Wadham Parade, Mount Waverley.
Convener(s)	Ian Bock 9807-3701

### East

Date (Feb-Dec)	Second Thursday of the month
Time	7.30pm – 9:30pm
Email	<a href="mailto:east@melbpc.org.au">east@melbpc.org.au</a>
Location	Eley Park Community Centre, 87 Eley Rd, Blackburn Sth.
Convener(s)	Paul Woolard 9877-1059 Ian Dewhurst 0438-480-500

## East Workshop

Date (Feb-Dec)	Second Sunday of the month No meeting in May Mothers Day
Time	10am – 2pm
Email	<a href="mailto:eastwsh@melbpc.org.au">eastwsh@melbpc.org.au</a>
Location	Wadham House, 52 Wadham Parade, Mount Waverley
Convener(s)	Ken Gubbins 9842-8875 Jeff Webster 9078-0879

## Essendon — Open Forum

Date (Feb-Dec)	Second Friday of the month
December	Christmas Function (10.30am)
Time	9:30am – 12 noon
Email	<a href="mailto:essendon@melbpc.org.au">essendon@melbpc.org.au</a>
Location	Nancye Kirchner Neighbourhood Centre, Doyle Street, Avondale Heights.
Convener(s)	John Guegan 9317-7114

## Essendon — Various Topics

	(check website for details).
Date (Feb-Nov)	Third Friday of the month
Time	9:30am – 12 noon
Email	<a href="mailto:essendon@melbpc.org.au">essendon@melbpc.org.au</a>
Location	Nancye Kirchner Neighbourhood Centre, Doyle Street, Avondale Heights.
Convener(s)	John Guegan 9317-7114

## Essendon — Multimedia/General

Date (Feb-Nov)	SIG Currently in Recess (Check SIG website for latest)
Time	7pm – 9pm
Email	<a href="mailto:essendon@melbpc.org.au">essendon@melbpc.org.au</a>
Convener(s)	John Guegan 9317-7114

## Everything Apple

Date (Feb-Nov)	Fourth Sunday of the month
Time	2pm – 4pm
Email	<a href="mailto:everything-apple@ausom.net.au">everything-apple@ausom.net.au</a>
Location	Melb PC HQ, Moorabbin.
Convener(s)	Julie Ackland

*Our emphasis is on Apple iDevices (iPod, iPhone, iPad, AppleTV, Time Capsule Airport Extreme) and helping people understand the Mac environment. Send your questions for or about the SIG to [everything-apple@ausom.net.au](mailto:everything-apple@ausom.net.au).*

## Genealogy East

Date (Feb-Nov)	Third Sunday of the month
December	Second Sunday in December
Time	1pm – 3.30pm
Email	<a href="mailto:geneast@melbpc.org.au">geneast@melbpc.org.au</a>
Location	Vermont South Community Centre, 1 Karobran Drive, Vermont South. 3133.
Convener	Denis Street

*The Genealogy East SIG is for those beginning genealogy and for those who are advanced but need more knowledge to move ahead. Members' trials, tribulations and expertise are openly discussed and freely shared in this self-help group.*

## Hardware

Date (Feb-Dec)	Second Friday of the month
Time	10am – 12 noon
Email	<a href="mailto:kcording@bigpond.net.au">kcording@bigpond.net.au</a>
Location	Wadham House, 52 Wadham Parade, Mount Waverley.
Convener(s)	Kelvin Cording 9438-1047

## iHelp

Date (Feb-Nov)	Approximately 6 monthly
Time	7pm – 9pm
Email	<a href="mailto:help@melbpc.org.au">help@melbpc.org.au</a>
Location	Melb PC HQ, Moorabbin.
Convener(s)	Dave Simpson
Current Web address:	<a href="http://melbpc.org.au/ihelp/">http://melbpc.org.au/ihelp/</a>

## Linux Workshop

Date (Feb-Dec)	Second Saturday of the month
Time	10:30am – 1:39pm
Email	<a href="mailto:linux@melbpc.org.au">linux@melbpc.org.au</a>
Location	Melb PC HQ, Moorabbin.
Convener(s)	David Hattam
Description	Linux help-workshop is hands on session

## MACE

(Melbourne Atari Computer Enthusiasts)

Date (Feb-Nov) Third Sunday of the month  
Time 10am – 2pm  
Email [maceatari@gmail.com](mailto:maceatari@gmail.com)  
Location Melb PC HQ, Moorabbin.  
Convener(s) Andrew Boschan  
0400-851-613

## Macedon Ranges

Date (Feb-Nov) Third Sunday of the month  
January & December Check with convener  
Time 2pm – 4pm  
Email [colinspc1@yahoo.com.au](mailto:colinspc1@yahoo.com.au)  
Location Further Education Centre, 18  
Hamilton St, Gisborne.  
Convener(s) John Hunter  
0406-868-226

*The Macedon Ranges members have a common interest in computers and range from beginners to technicians with the sole aim of sharing knowledge, experiences and helping each other.*

*The SIG is a general purpose group that is free flowing and may or may not have a specific subject to discuss each meeting. There are times a special guest is invited to speak on a particular subject that has been requested by a group member. At other times there may be special instruction and demonstrations on particular software or hardware. Members can also bring along any hardware they are having problems with for the group to try and resolve.*

## Microcontroller

Date (Jan-Dec) Second Wed of the month  
Time 7pm – 9.30pm  
Email [microcontroller@melbpc.org.au](mailto:microcontroller@melbpc.org.au)  
Location Melb PC HQ, Moorabbin.  
Convener(s) Phil Lew 0418-567-019  
John Hollow 0417-031-164

## Microcontroller Workshop

Date (Feb-Nov) Second & Fourth Sat of month.  
December Second Saturday only  
Time 12noon - 5pm  
Email [microcontroller-workshop@melbpc.org.au](mailto:microcontroller-workshop@melbpc.org.au)  
Location Melb PC HQ, Moorabbin.  
Convener(s) John Shirt 0409-568-267

Rob Brown 0419-285-806

*The Saturday Workshop is a Creative Space. It is a space to express your creativity. Its development depends on those who are involved and their interests. The workshops are centred around microcontrollers but are not limited to microcontrollers. If you are looking for a space that facilitates sharing of ideas and support, where you can express your creativity, then this SIG could be what you are looking for.*

## Mornington Peninsula Daytime

Date (Feb-Nov) Third Monday of the month  
December No meeting  
Time 9.30am – 12.30pm  
Email [peninsula@melbpc.org.au](mailto:peninsula@melbpc.org.au)  
Location Mornington Information Centre,  
320 Main St, Mornington.  
Convener(s) Terry Said 0427-750-327  
Ian Thomson [iaroth@netspace.net.au](mailto:iaroth@netspace.net.au)  
Colin Ackehurst  
[colin\\_a\\_ackehurst@bigpond.com](mailto:colin_a_ackehurst@bigpond.com)

## Mornington Peninsula Digital Imaging

Date (Feb-Nov) Third Monday of the month  
December No meeting  
Time follow on 12.30pm – 2pm  
Email [peninsula@melbpc.org.au](mailto:peninsula@melbpc.org.au)  
Location Mornington Information Centre,  
320 Main St, Mornington.  
Convener(s) Lloyd Lobbe

## Mornington Peninsula Family History

Date (Feb-Nov) Third Monday of the month  
December No meeting  
Time follow on 2pm – 4.30pm  
Email [peninsula@melbpc.org.au](mailto:peninsula@melbpc.org.au)  
Location Mornington Information Centre,  
320 Main St, Mornington.  
Convener(s) Colin Ackehurst  
[colin\\_a\\_ackehurst@bigpond.com](mailto:colin_a_ackehurst@bigpond.com)

## Multimedia Home Entertainment (MHE)

Date (Feb-Dec) First Friday of the month  
Time 10am – 12 noon  
Email [multimed@melbpc.org](mailto:multimed@melbpc.org)  
Webpage <http://www.melbpc.org>

Location Wadham House, 52 Wadham  
Parade, Mount Waverley.  
Convener(s) John Hall 9803-2731  
Kelvin Cording 9438-1047

*The aim of the MHE group is to assist members in the installation and operation of PC based hardware and software to run and maintain Multimedia Home Entertainment systems. This would include such things as Personal Video Recorders (PVRs), Media Servers (including Windows Home Server), Internet streaming of video and audio, Sony PS3 and Windows X-Box home entertainment systems, and home networking and storage systems for playback of video and audio. Attendees from beginner to expert level are all welcome. Members are encouraged to bring their own equipment to gain hands-on experience in setup and/or maintenance.*

## Music

Date (Feb-Nov) Third Thursday of the month  
Jan & December Check with convener  
Time 7.30pm – 9.30pm  
Email [music@melbpc.org.au](mailto:music@melbpc.org.au)  
Location Melb PC HQ, Moorabbin.  
Convener(s) Bill Sakell 0430 566 422  
John Shirt 0409 568 267

## North East Android

Date (Feb-Nov) Third Wed of the month  
December Second Thursday in December  
Time 10am – 12noon  
Email [ne-android@melbpc.org.au](mailto:ne-android@melbpc.org.au)  
Location Uniting Church Hall, 19 Seddon  
Street, Ivanhoe.  
Convener(s) Colin Lampshire 9857-5372  
or 0413-640-408  
Kelvin Cording 9438-1047

## North East Daytime

Date (Feb-Dec) Second Thursday of the month  
Time 10am – 12.15pm  
Email [neday@melbpc.org.au](mailto:neday@melbpc.org.au)  
Location Uniting Church Hall, 19 Seddon  
Street, Ivanhoe.  
Convener(s) Colin Lampshire 9857-5372  
or 0413-640-408

## North East Genealogy

Date January 31<sup>st</sup> January 2017  
Date (Feb-Dec) First Tuesday of the month  
Time 10am – 12.00noon

Email [negen@melbpc.org.au](mailto:negen@melbpc.org.au)  
Location Uniting Church Hall, 19 Seddon  
Street, Ivanhoe.  
Convener(s) Lynn Hammet  
[lynnhammet@gmail.com](mailto:lynnhammet@gmail.com)

## Northern Suburbs Linux

Date (Feb-Nov) Third Monday of the month  
Time 7.30pm – 9.30pm  
Email [nsllig@melbpc.org.au](mailto:nsllig@melbpc.org.au)  
Location Community Meeting Room,  
Watsonia Library, 4 Ibbotson St, Watsonia.  
Convener(s) David Hatton  
Stephen Davidson

## Online

Date and time As you choose  
Email [kazkev@melbpc.org.au](mailto:kazkev@melbpc.org.au)  
Location Yammer online discussion Group  
Convener(s) Kevin Martin — Evening only  
5964-7627 or 0407-343-162

## Programming

Date (Jan-Nov) Fourth Wed of the month  
Time 7.00pm – 9.30pm  
Email [programming@melbpc.org.au](mailto:programming@melbpc.org.au)  
Location Melb PC HQ, Moorabbin.  
Convener(s) John Viney

*Tell us about the programs you are writing, wrote in the past, or give us ideas for interesting programs to write. We'll walk through the process of developing software, from user interface design to writing the code in computer language and testing. Different programming languages, techniques and tools will be showcased as well as scripts, plug-ins, extensions, markups, compilers, databases. Something for beginners and pros alike.*

## Raspberry Pi — Mt Waverley

Date (Jan-Nov) Fourth Friday of the month  
Time 10am – 12 noon  
Email [aspi@melbpc.org.au](mailto:aspi@melbpc.org.au)  
Location Wadham House, 52 Wadham  
Parade, Mount Waverley.  
Convener(s) John Hall 9803-2731  
Lance Lloyd 9884-5559

## Raspberry Pi — Moorabbin

Date (Jan-Dec) Second Saturday of the month  
Time 2pm – 4pm  
Email [raspi-moorabbin@melbpc.org.au](mailto:raspi-moorabbin@melbpc.org.au)



Location Melb PC HQ, Moorabbin.  
Convener(s) Mohan Gupta  
Rob Brown 0419 285 806

## Sunbury Daytime — New Users

Date (Feb-Dec) First Thursday of the month  
Time 9.30am – 12noon  
Email [sunburydaytime@gmail.com](mailto:sunburydaytime@gmail.com)  
Webpage <http://sunburydaytime.wix.com/sunbury-pc-club>  
Location Sunbury Senior Citizens Centre (back room),  
8 O'Shanassy Street, Sunbury.  
Convener(s) Kevin Hale 9740-5786  
John Fogarty

## Sunbury Daytime — Advanced

Date (Feb-Dec) Second Thursday of the month  
Time 9.30am – 12noon  
Email [sunburydaytime@gmail.com](mailto:sunburydaytime@gmail.com)  
Webpage <http://sunburydaytime.wix.com/sunbury-pc-club>  
Location Sunbury Senior Citizens Centre (back room),  
8 O'Shanassy Street, Sunbury.  
Convener(s) Kevin Hale 9740-5786  
John Fogarty

## Sunbury Daytime Main Meeting

Date (Feb-Nov) Third Thursday of the month  
Time 9.30am – 12noon  
Email [sunburydaytime@gmail.com](mailto:sunburydaytime@gmail.com)  
Webpage <http://sunburydaytime.wix.com/sunbury-pc-club>  
Location Sunbury Senior Citizens Centre (back room),  
8 O'Shanassy Street, Sunbury.  
Convener(s) Kevin Hale 9740-5786  
John Fogarty

## Sunbury Daytime Maintenance & Linux

Date (Feb-Nov) Fourth Thursday of the month  
And Fifth Thursday of the month.  
Time 9.30am – 12noon  
Email [sunburydaytime@gmail.com](mailto:sunburydaytime@gmail.com)  
Webpage <http://sunburydaytime.wix.com/sunbury-pc-club>  
Location Sunbury Senior Citizens Centre (back room),  
8 O'Shanassy Street, Sunbury.  
Convener(s) Kevin Hale 9740-5786  
John Fogarty

## Video Inner East

Date (Feb-Nov) Second Monday of the month  
Except June Queen's Birthday  
Time 7:30pm – 9:30pm  
Email [videoinnereast@gmail.com](mailto:videoinnereast@gmail.com)  
Webpage <http://www.mpcvideo.blogspot.com.au>  
Location Copland Room, Ashburton  
Library, 154 High St, Ashburton  
Convener Richard Balsillie 9809-4116

## Video Production — Sony

Date (Jan-Dec) Second Wed of the month  
Time 10am – 12 noon  
Email [rdwragg@fastmail.fm](mailto:rdwragg@fastmail.fm)  
Location Melb PC HQ, Moorabbin.  
Convener(s) Roger Wragg  
Bob Flack

*This group specialises in video editing and production using all SONY products, including VEGAS with both the Platinum and Pro versions. We cater for all members from beginners to advanced and work with all video formats from standard definition (SD) up to full high definition (HD) using both tape, DVD, and solid-state video cameras. The following topics are covered: Sound track production using Sony Cinescore Voice over recording using both Vegas and Sound Forge, Basic picture composition, Lighting for video, Working with Sony DVD Architect to produce both DVDs and Blu-ray discs. Upon request, we will look at the conversion of 8mm movie film to a digital format using the group's special conversion equipment.*

## Video Production — Pinnacle

Date (Jan-Nov) Fourth Wed of the month  
Time 10.00am - 12.30pm  
Email [tonypickup@optusnet.com.au](mailto:tonypickup@optusnet.com.au)  
Location Melb PC HQ, Moorabbin.  
Convener(s) Bill Johnson  
Tony Pickup

## WAFFLE

(Wine And Fine Food Lovers Event)

Date (Feb-Dec) First Wednesday of the month  
Time 9.30pm (after the Monthly Meeting)  
Email [phil@melbpc.org.au](mailto:phil@melbpc.org.au)  
Location Fongs Chinese Restaurant, 725 Centre Rd (cnr Francesco), Bentleigh East.  
Convener(s) Phil Lew 0418-567-019  
Tom Rado 9807-4072

## WASINT

(Web and Software Investment Tools)

Date (Feb-Dec) Second Tuesday of the month  
Time 10.30am – 12.30pm  
Email [wasint@melbpc.org.au](mailto:wasint@melbpc.org.au)  
Location Melb PC HQ, Moorabbin.  
Convener(s) Richard Solly

## Website Design — Tutorials

Date (Feb-Nov) Second Sunday of the month  
Time 2pm – 4pm  
Email [webdesign@melbpc.org.au](mailto:webdesign@melbpc.org.au)  
Location Melb PC HQ, Moorabbin.  
Convener(s) Fleur Stephens 0407-330-963

*The aim of the Web Design SIG is to help members build and manage web sites. So if you are creating, managing or designing a web site and need some help, drop in.*

## Website Design Troubleshooting

Date (Feb-Nov) Second Sunday of the month  
Time 4pm – 6pm  
Email [webdesign@melbpc.org.au](mailto:webdesign@melbpc.org.au)  
Location Melb PC HQ, Moorabbin.  
Convener(s) Fleur Stephens 0407-330-963

## Windows Plus

Date (Jan-Nov) Third Saturday of the month  
Time 10am – 1pm  
Email [win78@melbpc.org.au](mailto:win78@melbpc.org.au)  
Location Melb PC HQ, Moorabbin.  
Convener(s) John Swale 0417-530-766  
Barry Stone

## Wyndham — General

Date (Feb-Dec) Second Monday of the Month  
*Incl. June Queen's Birthday*  
Time 7.30pm – 9.30pm  
Email [jpfh@melbpc.org.au](mailto:jpfh@melbpc.org.au)  
Location Room 3, Central Park Community Centre, Lonsdale Circuit (off Franklin Blvd), Hoppers Crossing.  
Convener(s) Chris Hughes 9731-0891  
John Healey

*This Group exists to provide local information and support to the South-West Region of outer Melbourne. We have Q&A sessions and coverage of PC hardware and software issues. There is a supper break with Time for informal discussion. Visitors always welcome*

## Wyndham — Multimedia

Date (Feb-Nov) Third Tuesday of the month  
December (*uncertain*) Check with convener  
Time 7.30pm – 9.30pm  
Email [jpfh@melbpc.org.au](mailto:jpfh@melbpc.org.au)  
Location Room 3, Central Park Community Centre, Lonsdale Circuit (off Franklin Blvd), Hoppers Crossing  
Convener(s) Chris Hughes 9731-0891  
John Healey

## Yarra Ranges

Date (Feb-Nov) Fourth Tuesday of the month  
December Third Tuesday in December  
Time 9.30AM – 12:30PM  
Email [yrig@melbpc.org.au](mailto:yrig@melbpc.org.au)  
Location Japara Living and Learning Centre, 54-58 Durham Road, Kilsyth.  
Convener(s) Bryan Paten 0429-430-640  
Shane Mason 9733-5390

## Yarra Ranges Workshop

**Discontinued**

**Known changes/corrections too late for publication will be posted to the website at:**  
<http://melbpc.org.au/interest-groups-resources/sig-changes/>

## SIG Leaders meeting – January 21<sup>st</sup> 2017

Approximately 40 members were present for this productive meeting.



With a number of good presentations, a considerable amount was achieved.



When asked for feedback, nobody thought that this was a waste of a Saturday.







# Membership Drive

## Introduce a new member\* to Melbourne PC User Group and receive credit towards your membership fees.

Did you know that Melb PC held its first meeting in November 1983?

Yes! it's true.

The group flourished and in 1993 started its own Internet service, becoming one of the founding suppliers of the Internet in Australia, and it is still a licensed ISP. Melb PC is Australia's largest and most active personal computer/technology group with thousands of members participating in more than 40 Special Interest Groups (SIGs) that meet regularly throughout Melbourne.

New members will receive all the benefits you already enjoy – the digital newsletter, the help lines, the Special Interest Groups (SIGs), the Monthly meetings and access to mobile broadband, personal email or IP4 Rental/Web Hosting/Private email Hosting, Microsoft OS discounts and you will be helping your club to grow.

You know how much you enjoy being part of Melbourne PC User Group. So why not bring along a friend to enjoy it too? Prospective new members are always warmly welcome at the Monthly Meeting and SIG Meetings.

Each new member\* you enrol gives you three months credit towards your membership renewal. (approx. \$24.00 value against a full membership). The more new members you enrol, the more credit towards your next membership renewal.

(\* This does not include Family members or anyone re-joining within 12 months of leaving Melb PC).

### Quotable quotes

Prophecy is the wit of a fool.  
Vladimir Nabokov

An ounce of emotion is equal to a ton of facts.  
John Junor

When I am sad, I sing, and then the world is sad with me.  
Anon.

A child of five would understand this. Send someone to fetch a child of five.  
Groucho Marks

## MEMBERSHIP APPLICATION FORM

Title	First Name	Last Name	
Business Name			
Address			
Suburb			Post Code
Phone		Mobile Number	
DOB	Preferred Email Address		
<b>SUMMARY</b>		<b>Additional Family Members or Corporate Representatives</b> (Maximum 2 names)	
Individuals	\$95 <input type="checkbox"/>	Title	First Name
Additional Family Members (Spouse and children)	\$25 <input type="checkbox"/>	Title	First Name
Pensioners/ Adult students A (25+)*	\$80 <input type="checkbox"/>	Title	First Name
Students B (14-25 yrs.)	\$35 <input type="checkbox"/>	Title	First Name
Corporate	\$190 <input type="checkbox"/>	Title	First Name
(One membership is two representatives)		Title	First Name
<b>TOTAL: \$</b> <input type="text"/>		Please provide emergency contact details below.	
		Full Name.	
		Phone no.	

Referred by member: \_\_\_\_\_ full name or membership number /SIG\_\_\_\_\_

### Terms and conditions

- Adult students A must attach a photocopy of their student card or letter from their educational institution confirming full student status.
- All student B members must have a Student Card and have evidence of their age at time of joining.
- Pensioners must attach a photocopy showing both sides of their Centrelink Pension Concession Card. Change of family member(s) must be identified in writing to the club secretary.

I hereby apply for membership of Melbourne PC Users Group Inc. (A000329V) and agree to abide by its rules while I remain a member.

Signature \_\_\_\_\_ Date \_\_\_\_/\_\_\_\_/\_\_\_\_

### Payment Details

Name on Card	Expiry Date
Credit Card Number	
Signature	Date ____/____/____

### Email User Name Selection

List the user ("login") names you would like in order of preference. Write very clearly, to avoid our confusing certain letters. User names are expressed in lower case letters and must represent your real name in some recognisable way e.g. "John J. Jones" might request user names such as "john", "johnj", "jjones", etc. Any user name that is already allocated or deemed unsuitable in the opinion of the system administrators will not be allocated.

Choice 1. \_\_\_\_\_@melbpc.org.au

Choice 2. \_\_\_\_\_@melbpc.org.au





## MELBOURNE PC USER GROUP INC.

ABN 43 196 519 351  
 (Victorian Association Registration No. A0003293V)  
 Unit 26, 479 Warrigal Road, Moorabbin Vic 3189 Australia  
 Telephone: (03) 9276 4000  
 Email: office@melbpc.org.au Web: www.melbpc.org.au

"Members helping Members"

## APPLICATION FOR MOBILE 3G/4G BROADBAND

Name		Membership Number
Address		Current Contact Email Address
Suburb	Post Code	Phone

\* SEE TERMS AND CONDITIONS OVERLEAF. YOU ARE REQUIRED TO SIGN THE TERMS AND CONDITIONS INDICATING YOU HAVE READ AND UNDERSTOOD THEM.

\* Complete all fields on this Mobile Broadband Application. This Information is required for the system database. Incomplete applications will be returned.

## 3G/4G MOBILE DATA PLANS

3GB	5GB	7GB	9GB	12GB	15GB
<b>\$25 PER MONTH</b>	<b>\$35 PER MONTH</b>	<b>\$40 PER MONTH</b>	<b>\$50 PER MONTH</b>	<b>\$60 PER MONTH</b>	<b>\$65 PER MONTH</b>
First month in advance (\$50), thereafter \$25 on a direct debit on credit card for 12 months. Total spend \$300.00	First month in advance (\$70), thereafter \$35 on a direct debit on credit card for 12 months. Total spend \$420.00	First month in advance (\$80), thereafter \$40 on a direct debit on credit card for 12 months. Total spend \$480.00	First month in advance (\$100), thereafter \$50 on a direct debit on credit card for 12 months. Total spend \$600.00	First month in advance (\$120), thereafter \$60 on a direct debit on credit card for 12 months. Total spend \$720.00	First month in advance (\$130), thereafter \$65 on a direct debit on credit card for 12 months. Total spend \$780.00
DEVICE INCLUDED	DEVICE INCLUDED	DEVICE INCLUDED	DEVICE INCLUDED	DEVICE INCLUDED	DEVICE INCLUDED
EXCESS DATA USAGE COSTS \$10.00 PER 1GB OR PART THEREOF.	EXCESS DATA USAGE COSTS \$10.00 PER 1GB OR PART THEREOF.	EXCESS DATA USAGE COSTS \$10.00 PER 1GB OR PART THEREOF.	EXCESS DATA USAGE COSTS \$10.00 PER 1GB OR PART THEREOF.	EXCESS DATA USAGE COSTS \$10.00 PER 1GB OR PART THEREOF.	EXCESS DATA USAGE COSTS \$10.00 PER 1GB OR PART THEREOF.

**3GB PLAN \$234 upfront for 12 month contract on 3G/4G Plan= \$19.50 PER MONTH**  
 (EXCESS DATA USAGE COSTS \$10.00 PER 1GB OR PART THEREOF.)

**MODEMS:** USB Modem **Free** ☐ Wi-Fi Modem Huawei E5573 \$100 ☐ USB Wi-Fi Modem (car kit included) \$116 ☐

**NOTE:** We are no longer supplying 3G Mobile Broadband modems due to our Optus upgrade to the 4G service. This does not apply to the Voice and Data plans.

**COVERAGE:** Coverage depends on your device and plan. For detailed coverage maps, including 3G, 4G and 4G Plus maps see [optus.com.au/coverage](http://optus.com.au/coverage).

## BYO PHONE VOICE and DATA 3G/4G

**Do you need more Voice and less data? More data and less Voice? That's not an issue.**  
**PLANS ARE FLEXIBLE ENOUGH TO SUIT ANY NEED, CONTACT THE OFFICE. PLANS START AS LOW AS \$18 A MONTH!**

<p><b>\$35 MONTHLY SIM PLAN on 4G network</b>          (\$420.00 total spend for 12 months, pay monthly)</p> <ul style="list-style-type: none"> <li>● Standard calls to friends and family within Australia</li> <li>● \$500 of included value</li> <li>● Massive <b>2.5GB of data!</b></li> </ul> <p>Just bring your own phone and get connected on the Optus network</p> <p><small>Pricing Information: The cost of a two minute standard national voice call is \$2.36. The cost of sending a standard national TXT is 30c. *Includes standard national &amp; international voice &amp; video calls &amp; TXT &amp; PXT; voicemail; calls to 1223, 1225, 13, 15 &amp; 18 numbers; &amp; re-routed calls. International Roaming (Contact office for pricing) ; Excess data usage (\$10.00 per GB).</small></p>	<p><b>\$55 MONTHLY SIM PLAN on 4G network</b>          (\$660.00 total spend for 12 months, pay monthly)</p> <ul style="list-style-type: none"> <li>● <b>Unlimited</b> Phone calls and texts within Australia (Excluding International calls)</li> <li>● Standard calls to friends and family within Australia</li> <li>● Massive <b>4GB of data!</b></li> </ul> <p>Just bring your own phone and get connected on the Optus network</p> <p><small>Things you will be charged for: Directory assistance (50c per call); Standard national video calling (\$1.00 per minute plus 40c flag fall); 124VE5 (90c per minute plus \$1.75 flag fall); International Roaming (Contact office for pricing) ; Premium talk and text to 19 numbers (Extra charge as advised by that provider) &amp; Excess data usage (\$10.00 per GB).</small></p>
--	--

# **\*Melb PC Mobile Broadband Internet Terms and Conditions**

## **A. Definitions**

"Melb PC" means Melbourne PC User Group incorporated or its assignee;

"Member" means a financial member of Melbourne PC User Group and includes:

a) "Full Member" A person accepted into the Group after payment of the current full membership fee, or the related Student or Pensioner concession fee.

b) "Family Member" A domiciled spouse, partner, child or relative of a full member accepted to participate in activities of the Group and use that Member's Internet account after payment of the Family Membership fee; the subscriber means the MelbPC full member who has accepted the Melb PC Internet Agreement and paid fees for the subscription period and includes both Full and Email account subscribers. (see Level of Description); "subscription periods" means the period in advance for which the subscriber has paid in full being one of the periods of subscription offered by Melb PC from time to time.

## **B. Subscription type & Details.**

Subscription Type	Annual Fee or Monthly Fee	email & Newsgroup Storage or Mail Quota (Limit)	Browsing	Time Limit	Home Page Storage	Download Limit	When Limit Reached
3G/4G Mobile Broadband 3GB	\$234pa or \$25 p/m		Yes			3GB p/m	Excess data usage on all plans costs \$10.00 per TGB or part thereof
3G/4G Mobile Broadband 5GB	\$35 p/m					5GB p/m	
3G/4G Mobile Broadband 7GB	\$40 p/m					7GB p/m	
3G/4G Mobile Broadband 9GB	\$50 p/m					9GB p/m	
3G/4G Mobile Broadband 12GB	\$60 p/m					12GB p/m	
3G/4G Mobile Broadband 15GB	\$65 p/m					15GB p/m	
4G Voice and Data Plan \$35	\$35 p/m		Yes			2.5GB p/m	Excess data usage on all plans costs \$10.00 per TGB or part thereof
4G Voice and Data Plan \$55	\$55 p/m					4GB p/m	
Email account (office@melbpc.org.au)	\$0	Unlimited	nil		Nil	nil	

The above charges and details are subject to change from time to time. Limits and Time Quota: daily (non-cumulative) plus bonus time in non-peak periods.

Email Account Subscriber (available to all Melb PC Members without charge)

## **C. Description of Service(s)**

### **General:**

Melbourne PC User Group Inc. A0003293V (Melb PC) Internet Service network (the Network) is a service owned and operated by Melb PC for its members. It is a subscriber-funded service administered by the Internet Management Subcommittee (the subcommittee).

Function of the Melb PC Network: The primary function of the Network is to support the transfer of information to and from Melb PC members and the international community, subject to the terms of this agreement.

Access Software: The subscriber will need to acquire suitable mail, news and Web software from our shareware library or other resources. However, Melb PC makes available a configuration kit that automates his process for those who require it.

Accounts: Accounts are issued only to individuals, not company names; Melb PC may reject an application without stating a reason.

Support: Volunteers offer their help in local newsgroups and via an Internet Help team with interaction through Web Boards, e-mail and direct telephone support.

Duration: The subscription to the Network is for one year from the date of acceptance. It automatically terminates upon expiry of membership of MelbPC if that occurs earlier.

Acknowledgment: Successful applicants will include individuals whose forms are correctly filled out and whose funds have been transferred to the Melb PC Bank account.

Net Etiquette: Melb PC endorses adherence to ("Net etiquette" or "Netiquette") as deemed by the subcommittee from time to time and to prevailing international standards widely accepted as suitable behavior for using the Internet.

## **D. Terms of Agreement**

- The subscriber asks Melb PC to provide a level of Internet access and Melb PC agrees to do so.
- This agreement starts when an authorized officer of Melb PC has executed it and Melb PC has received a cleared payment for the subscription period.
- If the subscriber renews this agreement for a further subscription period, this agreement applies to the renewed subscription period unless the parties agree otherwise in writing.
- The subscriber acknowledges that:
  - Continuity and speed of the Internet access depends on a wide range of factors many of which are beyond the control of Melb PC.
  - Melb PC has no control over the accuracy of appropriateness of any information on the internet.
  - Melb PC is not responsible for any material available on the Internet.
  - The subscriber's Internet access may be interrupted by equipment failure, the need for routine maintenance peak demand and so on.
  - Melb PC cannot guarantee that the subscriber will be able to secure access at any given time or that fluctuations in demand by other subscribers will not prevent the subscriber from using the full amount of the maximum daily time allowance on any given day.
  - Melb PC cannot guarantee that subscriber's home pages will always be available.
  - Dial up and Mobile Broadband Internet Subscribers are responsible for writing and uploading their own home pages and keeping backup copies of same. Melb PC does not back up these home pages. Subscribers will need to reload their own home pages in the event that the Melb PC facilities suffer any data loss.
  - The right to publish and communicate using home pages is granted to full Internet subscribers in the spirit of user group activities of sharing and furthering the computing experience. The quality of the Melb PC Internet service will be protected by Melb PC reserving its right to suspend the access to any publications of a subscriber who generates a disproportionate amount of Internet traffic. Subject to matters of the kind referred to in the previous clause and to the subscriber's access limits, Melb PC will use its best endeavours to keep Internet access available continuously and to allow the subscriber to have access for the current daily time allowance as set from time to time.
- The subscriber will indemnify Melb PC against any liability, claim, action, suit, demand, loss, cost or expense arising out of or in any way connected with this agreement or Internet access, including without limitation any negligence by Melb PC, its servants or agents.
- The subscriber will pay fees according to Melb PC's standard pricing list from time to time, and a copy of the list certified by an officer of Melb PC is conclusive evidence of the prices applicable at any time.
- Any notice given about any matter concerning this agreement may be given by clicking an accept button following the display of the agreement on a web page, by fax, e-mail or post at the last fax number email or postal address notified to the sender and is deemed to have been received at the time when it would have arrived in the ordinary course of the relevant type of transmission.
- Melb PC may change any term of this Agreement or make additional rules at any time by means of notification delivered in accordance with clause 9. Subscriber may refuse to accept any such change and terminate or her Internet access and receive a pro-rata refund for any paid subscription if a request to this effect is received within 14 days from the deemed receipt date of a notice of changes. Should a subscriber continue to keep using the service past the date of the notice deemed received as described in clause 9, the subscriber shall be deemed to accept the changes. A copy of the rules certified by an officer of Melb PC is conclusive evidence of the rules applicable at any time. The rules from time to time will apply as if they were set out in full as terms of this agreement.
- The subscriber must not deliberately or recklessly do anything that damages Melb PC's equipment, software, setup or services.
- The subscriber must not use Internet access to annoy, harass or harm other Internet users including sending of viruses either wittingly or unwittingly and the sending of spam or unsolicited bulk email.
- The subscriber must not use Internet access for any unlawful purpose or in any unlawful manner.
- Melb PC does not review any publications or communication and does not verify, endorse, or otherwise take responsibility for the content of same.
- Subscribers are legally responsible for their own publications and communications.
- The subscriber will keep safe and confidential any access numbers; codes or passwords allotted to them by Melb PC and notify Melb PC without delay of any compromise of that information.
- Melb PC may suspend or terminate the subscribers Internet access immediately if the subscriber breaches this agreement wittingly or unwittingly or fails to promptly pay any money owed to Melb PC or ceases to be a member of Melb PC.
- Melb PC may delete without notice any material found on its storage disks without giving any reason for doing so.
- Melb PC may make and keep any record it requires for the purpose of this agreement or the rules or for the operation of its services or as required by the law or its officers.
- The subscriber must not transfer, sell or share internet access rights, or allow the account to be used by any other person, other than those Melb PC Family Members who are listed on this application and have paid the relevant charges.
- The user's last name must be displayed in all e-mail and news messages. The user's first name or initials may be displayed as desired.
- Commercial traffic, in the form of private messages and advertisements in newsgroups designated for that purpose, is permitted within the bounds of Net etiquette.
- The "Organisation" field in private email or public newsgroup article headers must always be Melbourne PC User Group Australia, the name of the service provider. Any other organisation or business name is permitted only in the four-line (maximum) "signature" text that is optionally inserted at the end of the message or article.
- The "From" field used in email and news messages may be the Melb PC assigned email address, e.g. jones@melbpc.org.au or a "Spam-trap" address, e.g. jones@notspam.org.au or, subject to Clause 22 an external address, e.g. jones@hotmail.com.
- Melb PC may assign its rights and obligations to full Internet Subscribers under this agreement to an Internet access provider that is of equal standard to Melb PC and after notice of assignment is given to the subscriber, this agreement shall have operation as if it had been entered into between the assignee and the subscriber and Melb PC's rights (except for its right to recover any money owed to it immediately before the assignment) and obligations under this agreement shall be at an end. Services to Associate internet Subscribers shall be limited to the period Melb PC is able to provide them from its own resources.
- The parties submit to the law of Victoria, Australia in relation to any the interpretation of this agreement, or any dispute arising out of it.
- To the extent permitted by law and except as expressly provided to the contrary in this Agreement, all warranties whether express, implied, statutory or otherwise, relating in any way to the subject matter of this Agreement or to this Agreement generally, are excluded Where legislation implies in this Agreement any condition, or warranty and that legislation avoids or prohibits provisions in a contract excluding or modifying the application of or the exercise of or facility under such term, such term shall be deemed to be included in this Agreement. However, the liability of Melb PC for any breach of such term shall be limited at the option of Melb PC, to any one or more of the following if the breach related to goods, the replacement of the goods or the supply of equivalent goods; the repair of such goods; the payment of the cost of replacing the goods or of acquiring equivalent goods, or the payment of the cost of having the goods repaired; and if the breach relates to services the supplying of the services again; or the payment of the cost of having the services supplied again. To the extent permitted by law and except as expressly provided to the contrary in this Agreement Melb PC shall not be under any liability (contractual, tortious or otherwise) to subscriber in respect of any loss or damage (save for only personal injury and death) howsoever caused, which may be suffered or injured or which may arise directly or indirectly in respect to the supply of goods or services pursuant to this Agreement or the act, failure or omission of Melb PC.
- Accounts may be suspended without notice to stop transmission of network packets that threaten or have the potential to threaten the security or normal operation of any computer or device on the local or wider network. Such packets are categorised solely by the Internet Management Subcommittee. Users of accounts suspended without notice will be advised by telephone or writing within two working days of the nature of the packets originating from their account. Lifting of the suspension will require the registered account holder to provide evidence of confirmed action being taken to prevent further the transmission of such threatening or potentially threatening packets.
- The Description of Service "Internet Access Agreement" and the services as described on this application form constitute the entire agreement between the partner and neither of them relies on any term, condition, warranty, collateral contract, representation or promise not set out in those parts of these forms.
- Authorised by Melb PC Committee, 1<sup>st</sup> September 2013

I have read the terms and conditions

Signed.....Dated.....





## MELBOURNE PC USER GROUP INC.

ABN 43 196 519 351

(Victorian Association Registration No. A0003293V)

Unit 26, 479 Warrigal Road, Moorabbin Vic 3189 Australia

*"Members helping Members"* Telephone: (03) 9276 4000

# OFFICE 365 PRO PLUS

## 1 Year Subscription



Word



Excel



PowerPoint



OneNote



Access



Publisher



Outlook

### Microsoft Office 365 ProPlus for MelbPC Members

Subscriptions for Microsoft's desktop program suite Office 365 ProPlus are now available to Melbpc members at a reduced rate.

The programs included are; Word, Excel, OneNote, PowerPoint, Outlook, Publisher and Access. Members who take up this offer will be able to install the suite on up to fifteen different devices: 5 computers (PC or Mac), 5 tablets (iOS/Android/Windows) and 5 smartphones (iOS, Android, Windows). The new 2016 versions are available now.

Microsoft Office ProPlus is available to members for an annual subscription, set for the first year and payable by members in advance. (\*) **Renewal for each year will reflect Microsoft's current price at the time of renewal.**

After payment members will be able to download the program suite onto their own computers using their Office 365 login details (the same as they already use for email and other cloud services). As long as the subscription is maintained, members will receive updates and upgrades to the latest version of Office.

Our existing Office 365 Enterprise service provides the 'cloud' versions of some Office applications: Word, Excel, PowerPoint and OneNote. These can be used during a login to Office 365 via the web. They do not include all of the features available on the desktop versions. Office 365 ProPlus provides the full versions of those applications, and others not available at in the cloud at all: Outlook, Publisher and Access. (Publisher and Access are not available in the Mac OS X version.) The ProPlus programs can be used when the computer is offline and not connected to the internet, as they are installed directly on the computer (or tablet/ smartphone).



Skype for  
Business





InfoPath



OneDrive  
for Business

# SIG Meetings in February

<div>  <h2>Meetings In February 2017</h2> </div>						
Sunday	Monday	Tuesday	Wednesday	Thursday	Friday	Saturday
<div>  <p><a href="http://yammer.com/melbpc.org.au/">http://yammer.com/melbpc.org.au/</a></p> </div>			<b>1</b> <b>Monthly Meeting</b> Melb PC H.Q. Moorabbin 7pm - 9.30pm Supper - WAFFLE (Wine and Fine Food/Lowest Event) at Fong's 9.35pm	<b>2</b> <b>Ballarat</b> (7.30pm - 9.45pm) <b>Sunbury Daytime</b> (New Users 9.30am - 12noon)	<b>3</b> <b>Essendon</b> (Main Meeting 9.30am - 12noon) <b>Multimedia and Home Entertainment</b> (Wadham House Mt Waverley 10am - 12noon)	<b>4</b>
<b>5</b>	<b>6</b>	<b>7</b> <b>North East Genealogy</b> (Ivanhoe 10am - 12noon)	<b>8</b> <b>Video Production Sony</b> (10am - 12noon) <b>Communications</b> (7pm - 9.30pm) <b>Microcontroller</b> (7pm - 9.30pm)	<b>9</b> <b>East</b> (Eley Park Community Centre - Blackburn Sth 7.30pm - 9.30pm) <b>North East Daytime</b> (Includes Photography & Digital Imaging Ivanhoe 10am - 12noon) <b>Sunbury Daytime</b> (Advanced Users 9.30am - 12noon)	<b>10</b> <b>Casey</b> (Narre Warren Library 12.30pm - 3pm) <b>Essendon</b> (Open Forum 9.30am - 12noon) <b>Hardware</b> (Wadham House Mt Waverley 10am - 12noon)	<b>11</b> <b>Micro controller Workshop</b> (12noon - 5pm) <b>Raspberry Pi Moorabbin</b> (2pm - 4pm)
<b>12</b> <b>East Workshop</b> including 3D printing (Wadham House Mt Waverley 10am - 2pm)	<b>13</b> <b>Access (database) and Excel</b> (6.30pm - 8.30pm) <b>Video Inner East</b> (Ashburton Library 7.30pm - 9.30pm) <b>Wyndham</b> (Hoppers Crossing 7.30pm - 9.30pm)	<b>14</b> <b>WASINT (Investing)</b> (10.30am - 12.30pm) <b>Linux Workshop</b> (4pm - 7pm) <b>Linux</b> (7pm - 9pm)	<b>15</b> <b>North East Android</b> (Ivanhoe 10am - 12noon)	<b>16</b> <b>Music</b> (7.30pm - 9.30pm) <b>Bayside</b> (Brighton 10am - 12noon) <b>Sunbury Daytime</b> (Main Meeting 9.30am - 12noon)	<b>17</b> <b>Digital Images</b> (Includes Photoshop Wadham House Mt Waverley 10am - 12noon) <b>Essendon</b> (Check website for meeting details. 9.30am - 12noon)	<b>18</b> <b>Windows Plus</b> (10am - 1pm)
<b>19</b> <b>MACE</b> (Atari Computers) (10am - 2pm) <b>Beginners East (Beast)</b> (Vermont South 10am - 12.30pm) <b>Genealogy East</b> (Vermont South 1pm - 3.30pm) <b>Macedon Ranges</b> (Gisborne 2pm - 4pm)	<b>20</b> <b>North Suburbs Linux</b> (7.30pm - 9.30pm) <b>Momington Peninsula</b> (General Inc Q&A 9.30am - 12noon) <b>Digital Imaging</b> 12.30pm - 2pm <b>Family History</b> 2pm - 4.30pm)	<b>21</b> <b>Wyndham</b> (Hoppers Crossing Multimedia 7.30pm - 9.30pm)	<b>22</b> <b>Programming</b> (7pm - 9.30pm) <b>Video Production Pinnacle</b> (10am - 12.30pm)	<b>23</b> <b>Sunbury Daytime</b> (Maintenance & Linux 9.30am - 12noon Meeting also held on a 5th Thursday)	<b>24</b> <b>Casey Workshop</b> (Narre Warren Library 12.30pm - 3pm) <b>Raspberry Pi</b> (Wadham House Mt Waverley 10am - 12noon)	<b>25</b> <b>Microcontroller Workshop</b> (12noon - 5pm)
<b>26</b> <b>Everything Apple</b> (2pm - 4pm) <b>Website Design</b> (2pm - 4pm)	<b>27</b>	<b>28</b> <b>Yarra Ranges</b> (Kilsyth 9.15am - 12.30pm)	Deadline for March 2017 Articles	<div> <b>Colour Codes</b>  <b>Black:</b> SIG meetings at Melb PC H.Q. Moorabbin.  <b>Blue:</b> SIG meetings held at other locations.  <b>Dotted Box:</b> No SIG meeting held this month.                     </div> <p>For information on "Special Interest Group" activities and meeting times see the group details in PC Update or go to <a href="http://melbpc.org.au/">http://melbpc.org.au/</a>                      Calendar listings, email: <a href="mailto:johnswann@hotmail.com.au">johnswann@hotmail.com.au</a></p>		
	Deadline for March 2017 Reports					

Even rats learn from experience.  
 George Skarbek