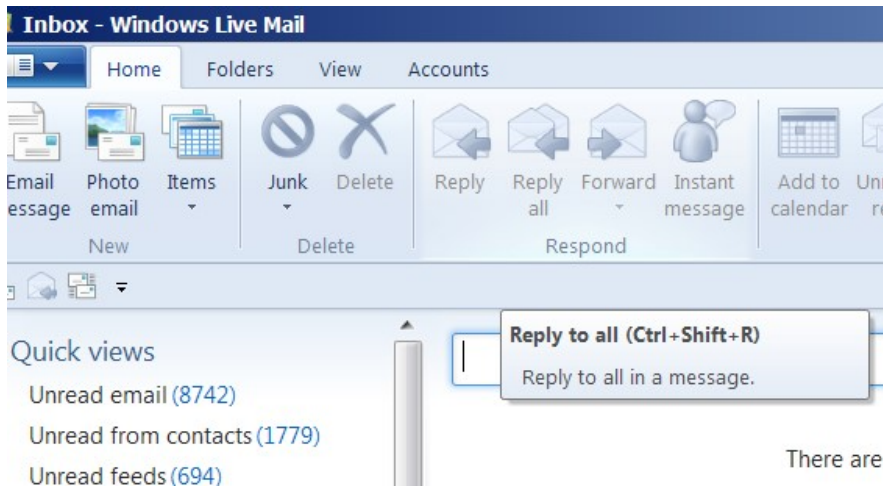


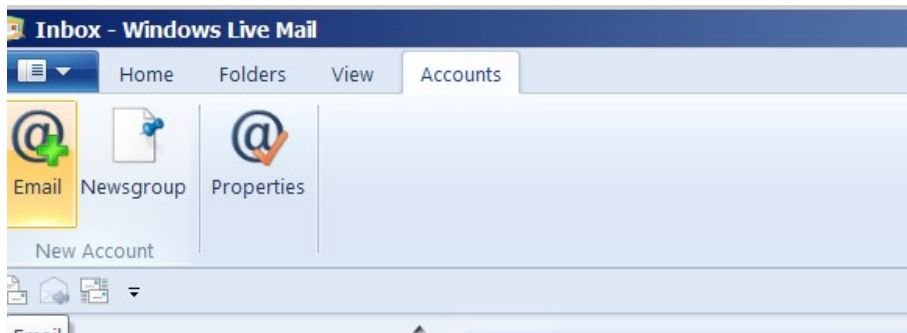


## Windows Live Mail Setup

Open Windows Mail



Go to the Accounts page



Click the Email icon

Windows Live Mail ☰

## Add your email accounts

Email address:  
  
[Get a Windows Live email address](#)

Password:  
  
 Remember this password

Display name for your sent messages:

Make this my default email account  
 Manually configure server settings

Most email accounts work with Windows Live Mail including  
Hotmail  
Gmail  
and many others.

Enter your details and click Next

Windows Live Mail

## Add your email accounts

Email address:  
  
[Get a Windows Live email address](#)

Password:

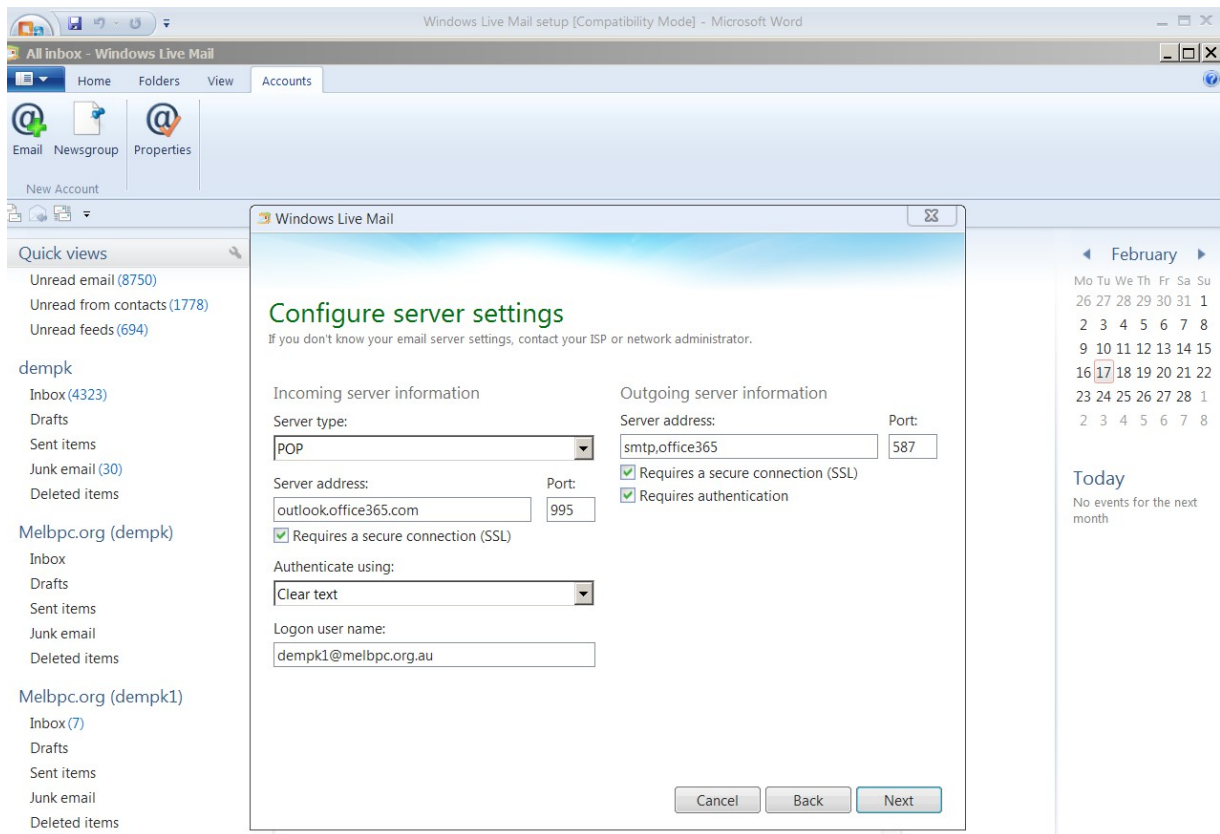
Remember this password

Display name for your sent messages:

Make this my default email account  
 Manually configure server settings

Most email accounts work with Windows Live Mail including  
Hotmail  
Gmail  
and many others.

Click Next



Enter details shown and Click Next

Windows Live Mail

## Configure server settings

If you don't know your email server settings, contact your ISP or network administrator.

**Incoming server information**

Server type:  
POP

Server address: outlook.office365.com Port: 995

Requires a secure connection (SSL)

Authenticate using:  
Clear text

Logon user name:  
dempk1@melbpc.org.au

**Outgoing server information**

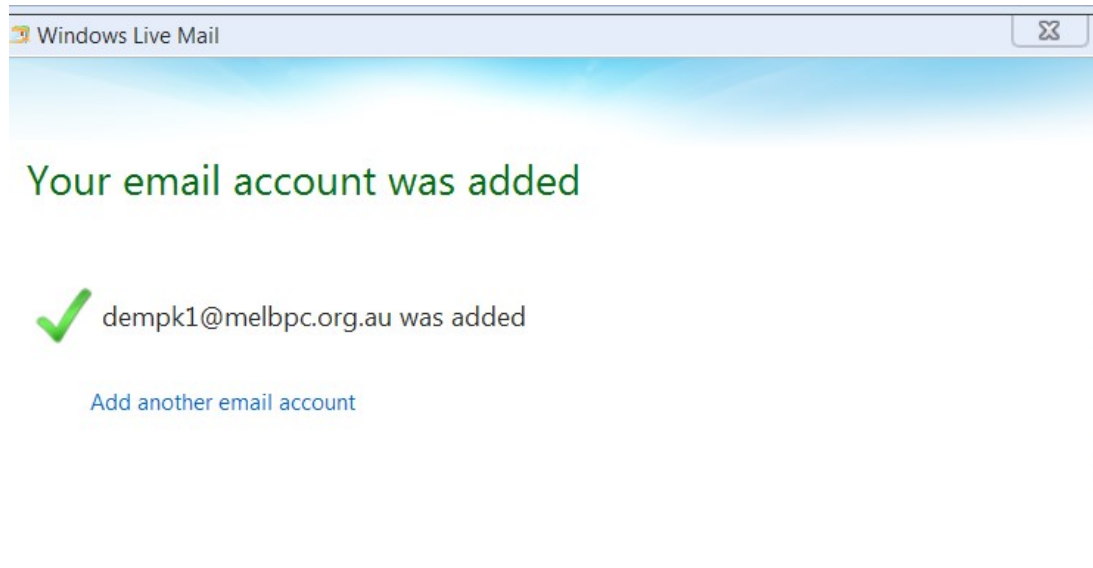
Server address: smtp.office365.com Port: 587

Requires a secure connection (SSL)

Requires authentication

Cancel Back Next

Click Next



Click Finish

KD Jly 2015